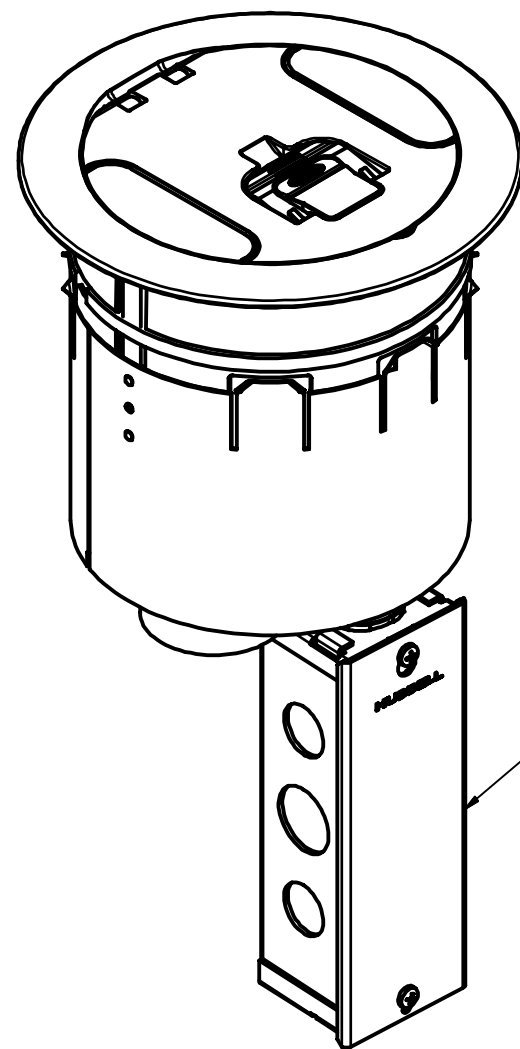


S1R6PTFITCHI



S1R6PTFIT

NOTES:

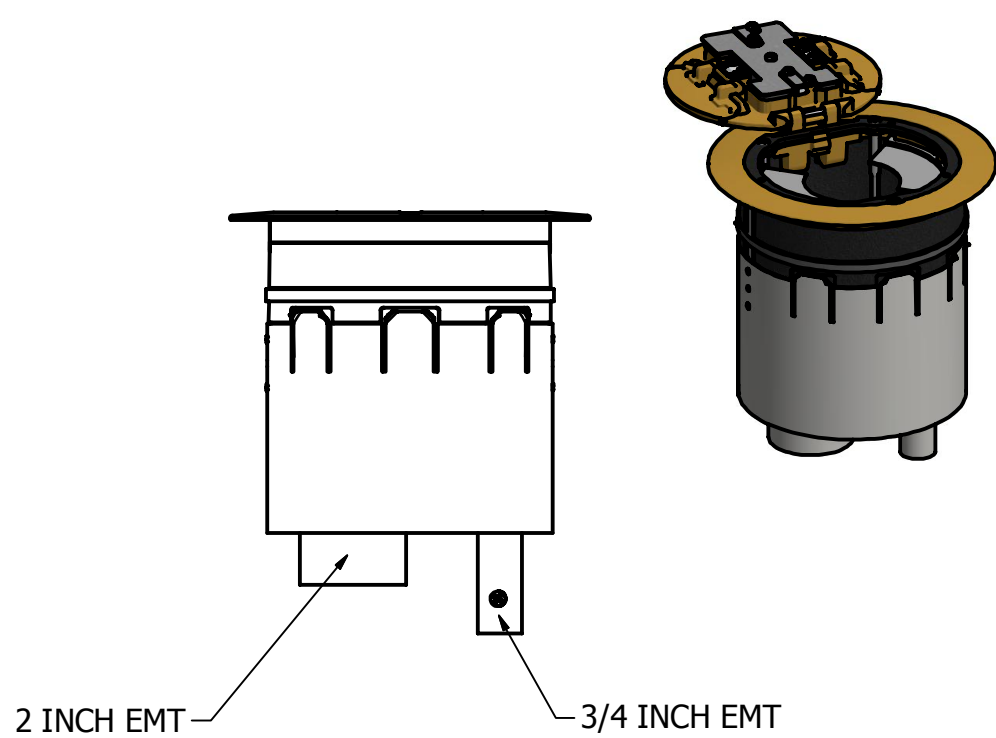
1. S1R6PT SUB-PLATE SUPPLIED WITH PRE WIRED , MOLDED , FOUR POSITION 20A, 125V BLACK RECEPTACLES.
2. FOLLOW MANUFACTURERS DIRECTIONS AND GUIDELINES FOR THE INSTALLATION AND MOUNTING OF THE POKE THRU AND ALL OF THE ASSOCIATED COMPONENTS.
3. FOR CAT NO. ENDS WITH FITCHI MEANS JUNCTION BOX IS NOT INCLUDED.

REV	DESCRIPTION	APP	DATE
-----	-------------	-----	------

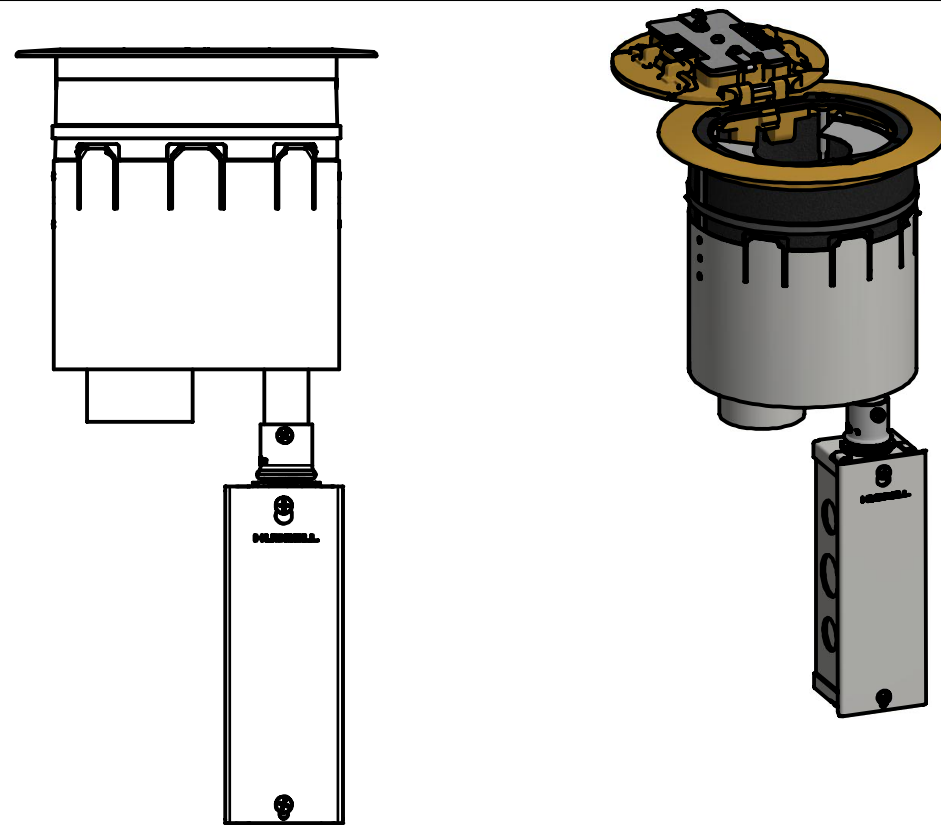
THE DESIGN AND DIMENSIONS OF THE PRODUCT SHOWN ON THIS DRAWING ARE SUBJECT TO CHANGE WITHOUT NOTICE

TITLE
6" RECESSED POKE-THROUGH

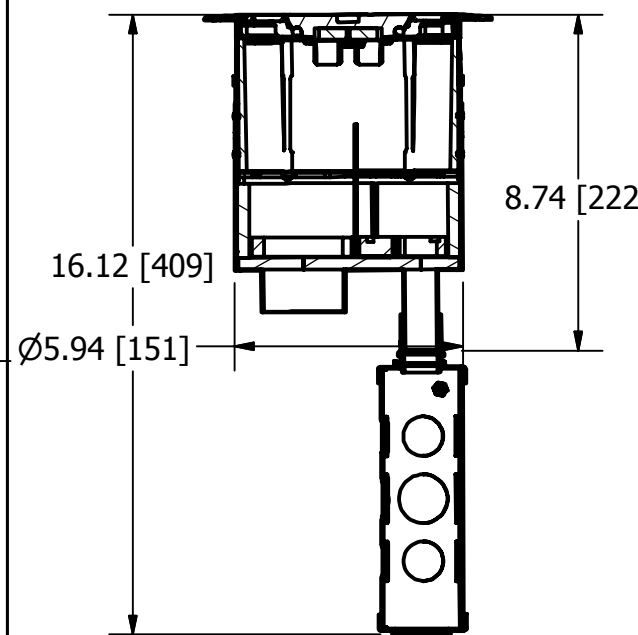
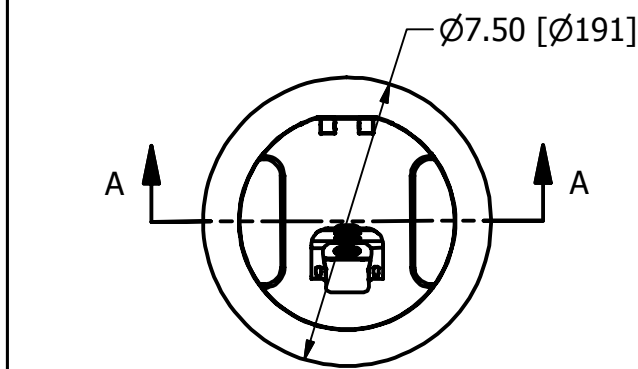
TOLERANCES UNLESS OTHERWISE SPECIFIED .XX = ± .01 .XXX = ± .005 ANGLES = ± 2'	WIRING DEVICE-KELLEMS HUBBELL INCORPORATED SHELTON, CT	
	DR. BY	APP. BY
	TR. BY	SCALE
	CHK. BY	DATE



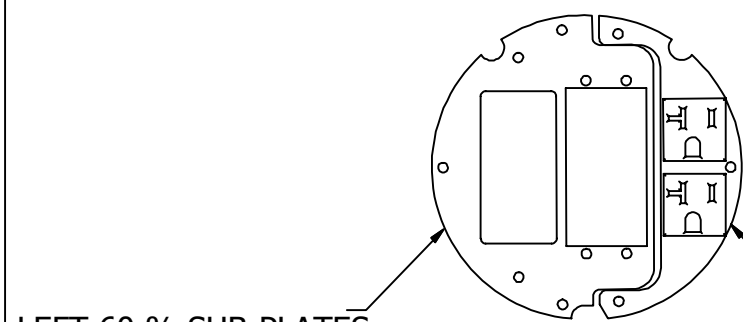
CATALOG NUMBER-S1R6PTFITCHI



CATALOG NUMBER-S1R6PTFIT



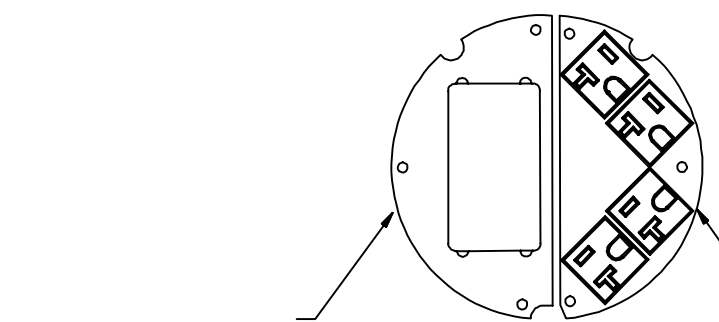
SECTION A-A



LEFT 60 % SUB-PLATES

RIGHT 40% SUB-PLATES

60/40 DEVICE PLATE COMBINATION



LEFT 50 % SUB-PLATES

RIGHT 50% SUB-PLATES

50/50 DEVICE PLATE COMBINATION

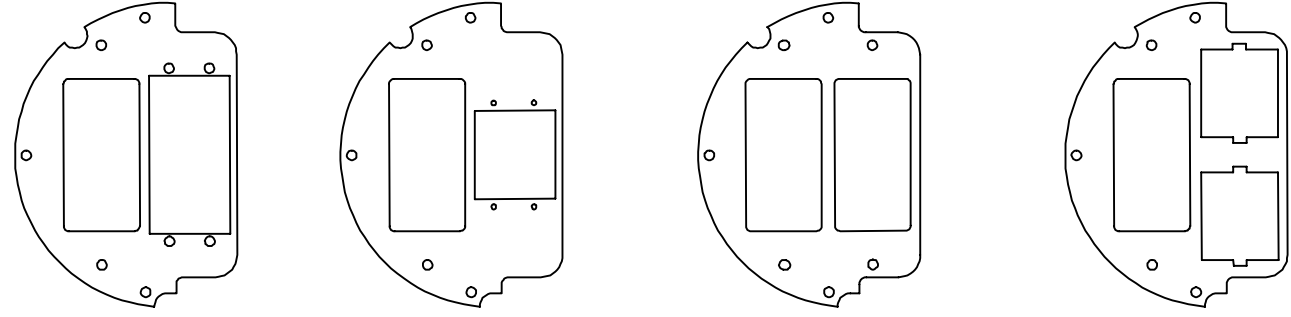
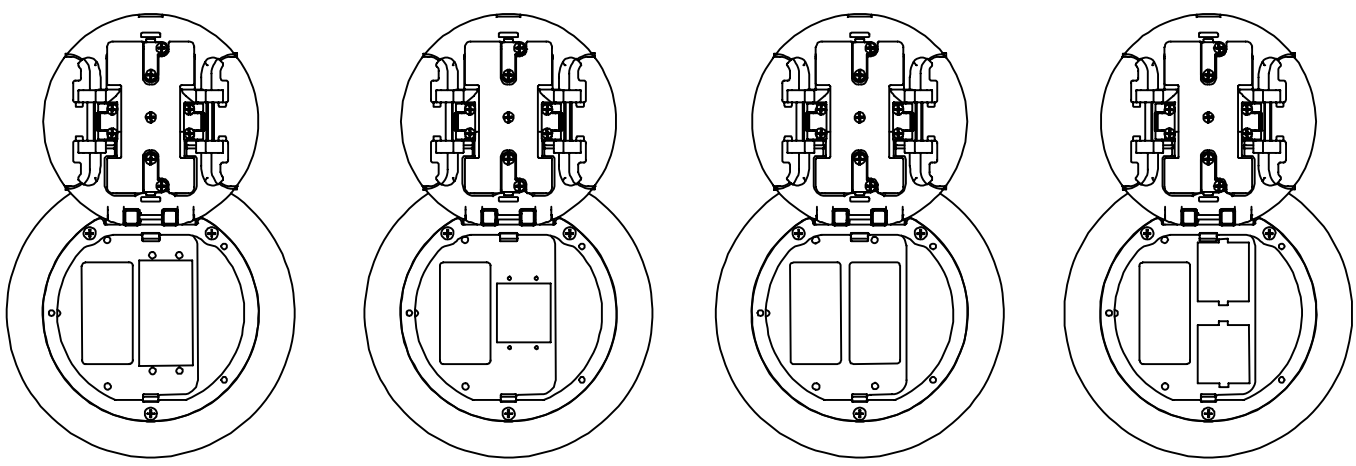
* POKE -THRU DEVICES ON THIS PAGE ARE AVAILABLE IN THE FOLLOWING COVER COLOR OPTIONS AS INDICATED BY THE CATALOG NUMBERS. AL - ALUMINUM FLANGE WITH COVER, BL - BLACK FLANGE WITH COVER, BRS - BRASS FLANGE WITH COVER, GY - GRAY FLANGE WITH COVER

REV	DESCRIPTION	APP	DATE

THE DESIGN AND DIMENSIONS OF THE PRODUCT SHOWN ON THIS DRAWING ARE SUBJECT TO CHANGE WITHOUT NOTICE

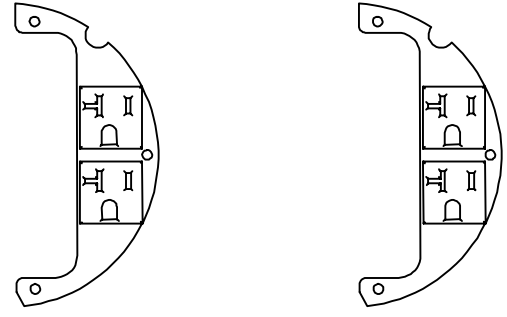
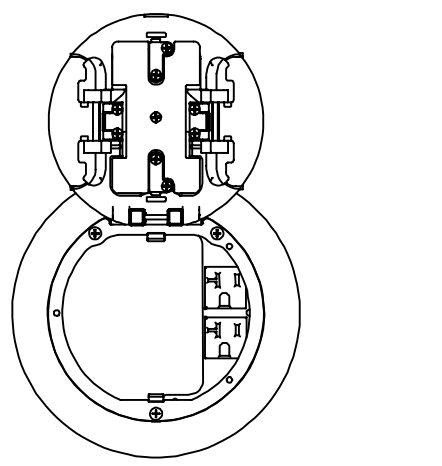
TITLE
6" RECESSED POKE-THROUGH

TOLERANCES UNLESS OTHERWISE SPECIFIED .XX = ± .01 .XXX = ± .005 ANGLES = ± 2'	WIRING DEVICE-KELLEMS HUBBELL INCORPORATED SHELTON, CT	
	DR. BY	APP. BY
	TR. BY	SCALE
	CHK. BY	DATE



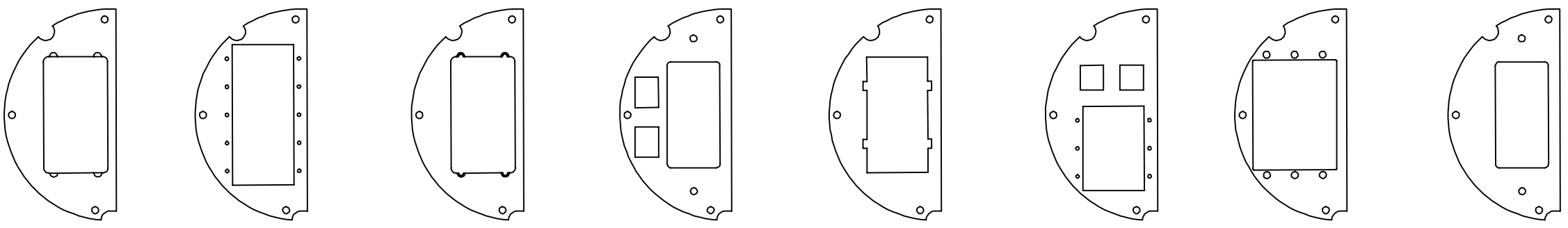
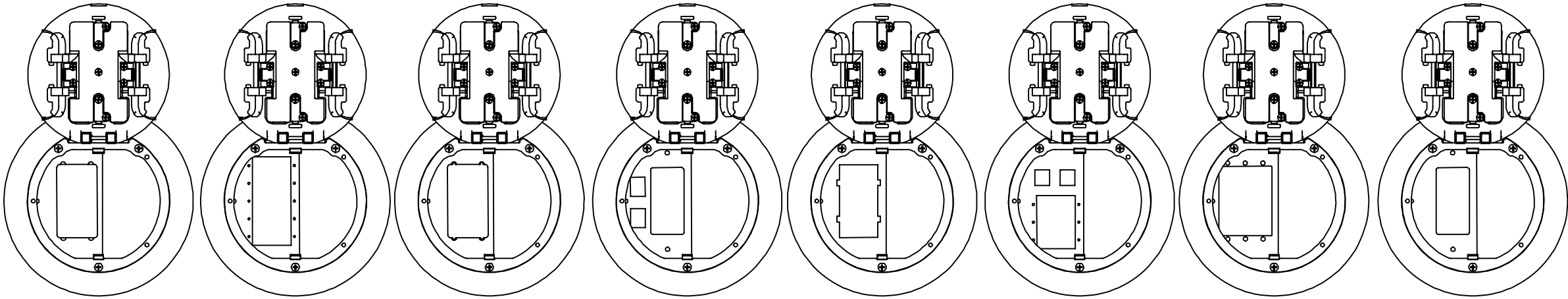
S1R6SPV S1R6SPX S1R6SPW S1R6SPY

LEFT 60 % SUB-PLATES



S1R6SPZ25 S1R6SPZ

RIGHT 40 % SUB-PLATES



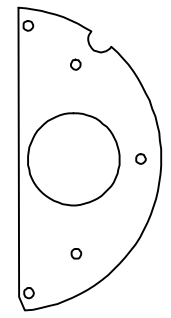
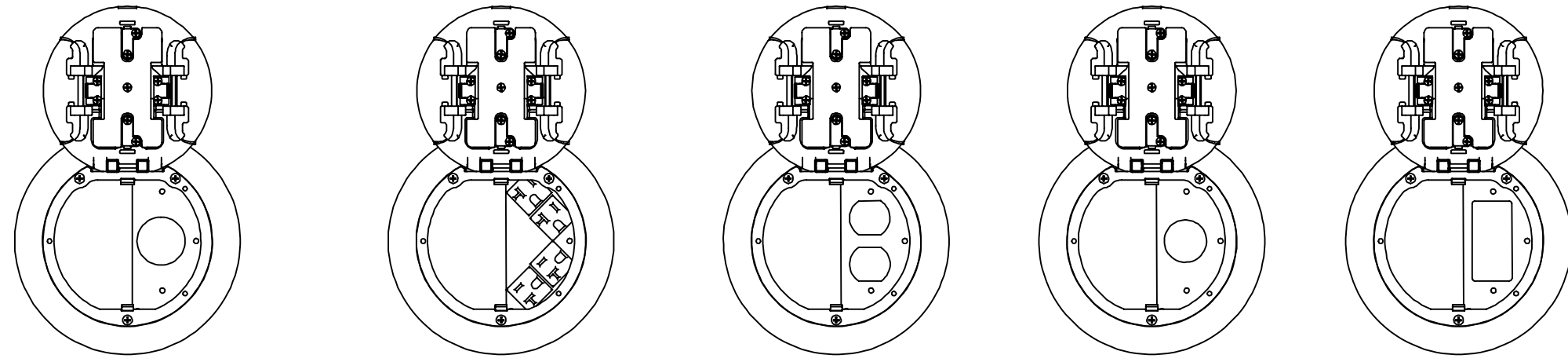
S1R6SPB S1R6SPC S1R6SPD S1R6SPE S1R6SPF S1R6SPL S1R6SPA S1R6SPM

LEFT 50% SUB PLATES

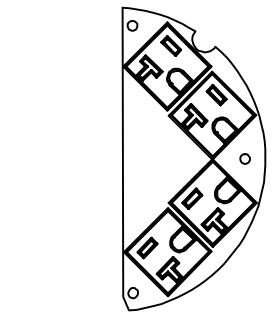
THE DESIGN AND DIMENSIONS OF THE PRODUCT SHOWN ON THIS DRAWING ARE SUBJECT TO CHANGE WITHOUT NOTICE

TITLE
6" RECESSED POKE-THROUGH

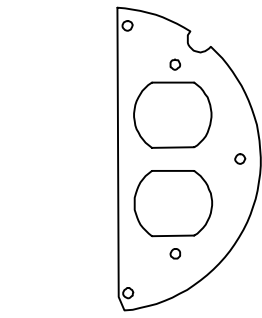
TOLERANCES UNLESS OTHERWISE SPECIFIED .XX = ± .01 .XXX = ± .005 ANGLES = ± 2'	WIRING DEVICE-KELLEMS HUBBELL INCORPORATED SHELTON, CT	
	DR. BY	APP. BY
	TR. BY	SCALE
	CHK. BY	DATE



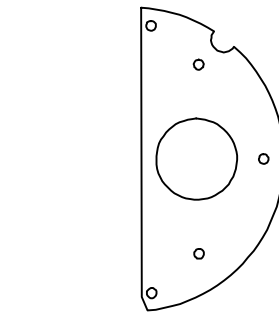
S1R6SPG



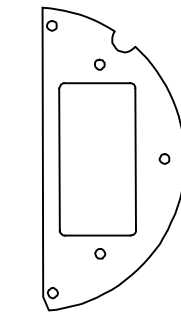
S1R6SPH



S1R6SPI



S1R6SPJ



S1R6SPK

RIGHT 50% SUB PLATES

FRPT ASSEMBLY 6 INCH SUBPLATE REQUIRED FOR ALL APPLICATIONS, SOLD SEPARATELY

NOTES:

1. * POKE -THRU DEVICES ON THIS PAGE ARE AVAILABLE IN THE FOLLOWING COVER COLOR OPTIONS AS INDICATED BY THE CATALOG NUMBERS. AL - ALUMINUM FLANGE WITH COVER, BL - BLACK FLANGE WITH COVER, BRS - BRASS FLANGE WITH COVER, GY - GRAY FLANGE WITH COVER.

2. SUB-PLATES CAN NOT BE ROTATED TO CREATE ADDITIONAL LAYOUTS.

3. CUSTOM PLATES AVAILABLE UPON REQUEST AND MAY BE SUBJECT TO MINIMUM ORDER QUANTITY.

THE DESIGN AND DIMENSIONS OF THE PRODUCT SHOWN ON THIS DRAWING ARE SUBJECT TO CHANGE WITHOUT NOTICE

TITLE

6" RECESSED POKE-THROUGH

TOLERANCES UNLESS OTHERWISE SPECIFIED

.XX = ± .01
.XXX = ± .005
ANGLES = ± 2'

WIRING DEVICE-KELLEMS
HUBBELL INCORPORATED
SHELTON, CT

DR. BY	B T	APP. BY
TR. BY		SCALE
CHK. BY		DATE