

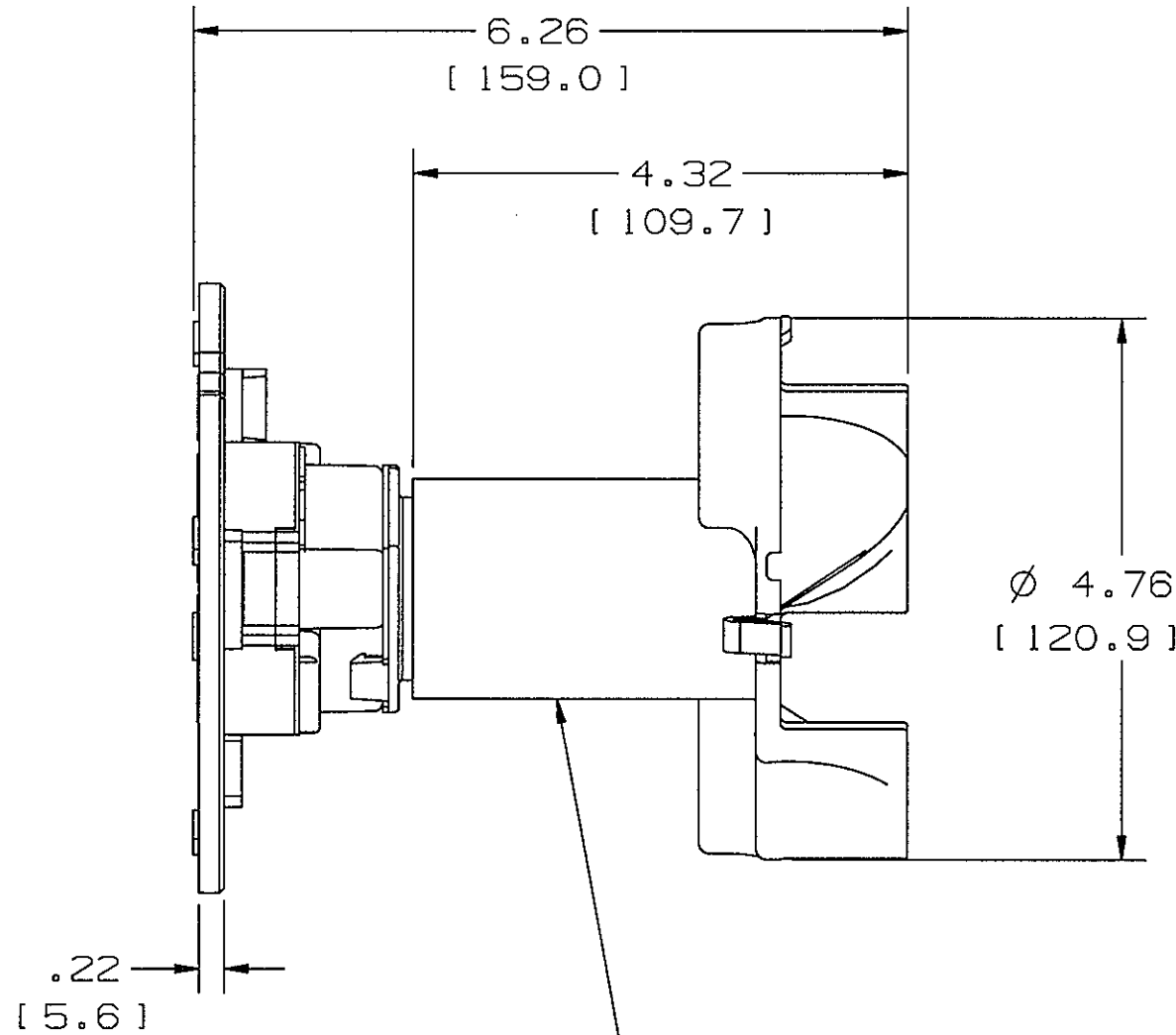
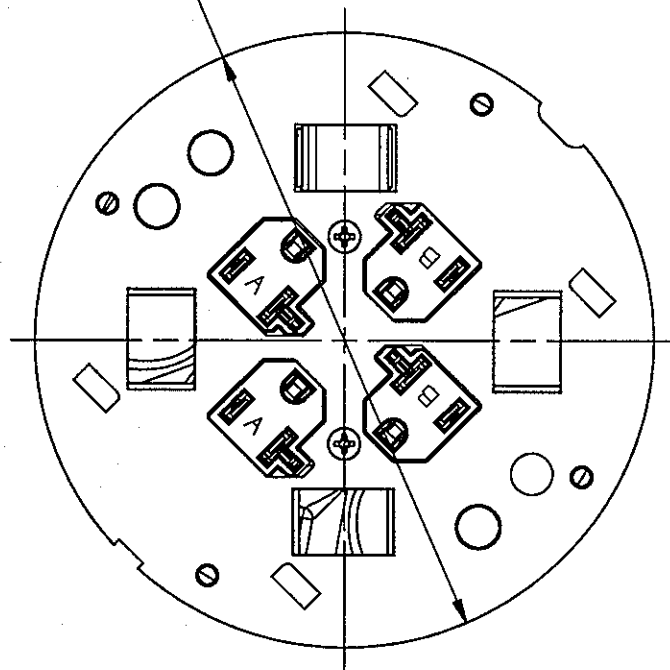
M-9522

6

NOTES

- 1 SEE INSTALLATION INSTRUCTIONS FOR PLACEMENT OF CONTROLLED LABELS.
2. PREWIRED WITH (6) LEAD WIRES.
3. DIMENSIONS IN INCHES [MM].

Ø 5.36
[136.1]



SISP4X4 SHOWN

ADD 2.4 CU. IN. PER INCH OF WIRING TUBE

CATALOG NO.	WIRE AWG	WIRE LENGTH	RECEPTACLE MARKING
SISP4X4	(6) #14	24" [609,6]	-
SISP4X4430	(6) #12	360" [9144,0]	-
SISP4X415	(6) #12	180" [4572,0]	-
1 SISP4X4C	(6) #14	24" [609,6]	CONTROLLED

LIST OF PARTS

DESCRIPTION	MATERIAL	FINISH
(2) SCREW #6-32	STN. STL.	
SUB PLATE 4X4	CAST ALUM.	BLACK
RECEPTACLE ASM.		
INSULATOR, FIRE BARR.	FB 525	
INSULATOR	THERMOSET	BLACK
WIRING ENCLOSURE	PVC	GRAY
VOLTAGE INSULATOR	THERMOPLASTIC	GRAY
INSULATOR PLATE	GALV. CRS	BLACK
(4) COMM BLANKS	THERMOPLASTIC	
(6) I.G. STICKER	POLYESTER	WHITE

SYM	REVISIONS	APP	DATE
6	ADDED RECEPTACLE MARKING COLUMN TO TABLE, ADDED SISP4X4C CAT. # TO TABLE. ADDED NOTES 1-3, ADDED CAT # SHOWN PER DCN 21884. MYA	DJP	3/16/16
5	ADDED SISP4X415 TO TABLE PER DCN 15724 RCM	DJP	5/6/09
4	ADDED (6) I.G. STICKER PER DCN 13943 SPN	CAC	5/18/07
3	REVISED PRE-WIRED NOTE, ADDED TABLE & "SISP4X430" PER DCN 13252 RCM	JPP	7/7/06
2	ADDED PRE-WIRED NOTE, ADDED ADD 2.4 CU IN NOTE, ADDED (4) COMM BLANKS TO LIST OF PARTS, REVISED TITLE BLOCK FOR SYSTEM ONE PER DCN 12261 TLS	TLS	3-8-05
1	DCN11999 INITIAL RELEASE	TLS	11-8-04

THE DESIGN AND DIMENSIONS OF THE PRODUCT SHOWN ON THIS DRAWING ARE SUBJECT TO CHANGE WITHOUT NOTICE

TITLE SYSTEM ONE
4X4 SUB PLATE ASM.
20A 125V

TOLERANCES UNLESS OTHERWISE SPECIFIED	WIRING DEVICE-KELLEMS HUBBELL INCORPORATED SHELTON, CT	
.XX = ±.01	DR. BY PAC	APP. BY TLS
.XXX = ±.005	TR. BY	SCALE NONE
ANGLES = ±2°	CHK. BY TLS	DATE 9-21-04

DIMENSION SHEET FOR CAT. NO. M-9522
 SEE TABLE
 REPAIRABLE NON-REPAIRABLE B