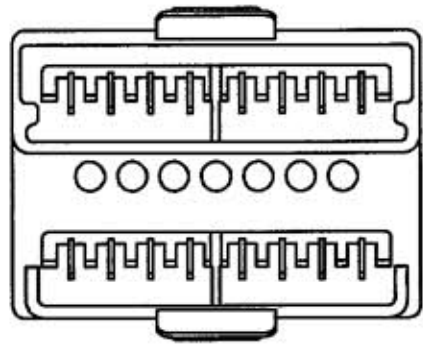


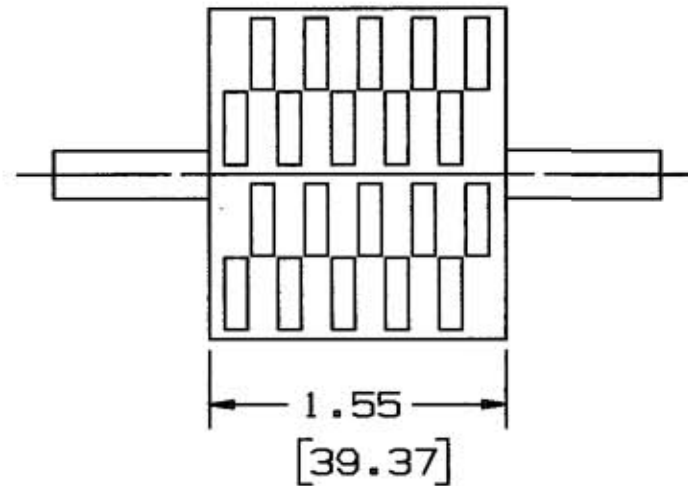
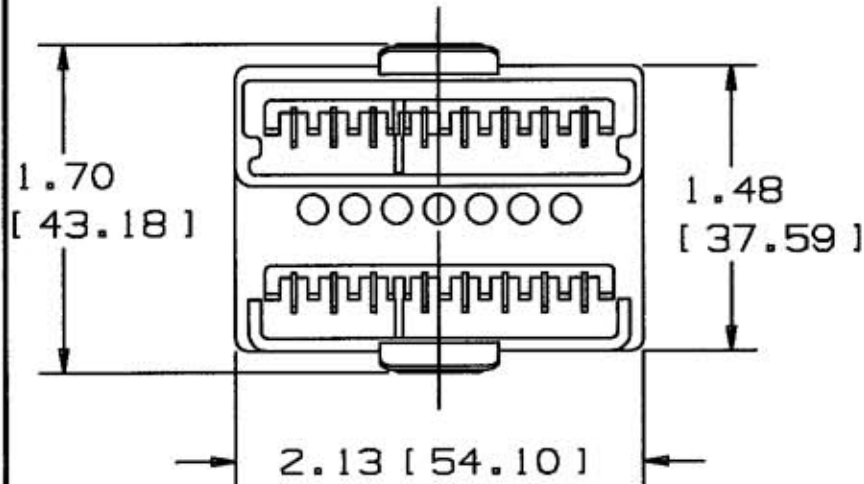
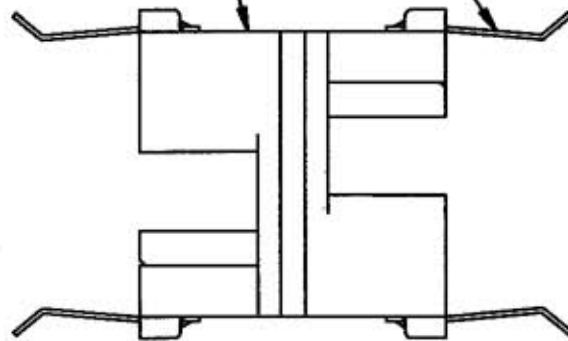
M-9048 2



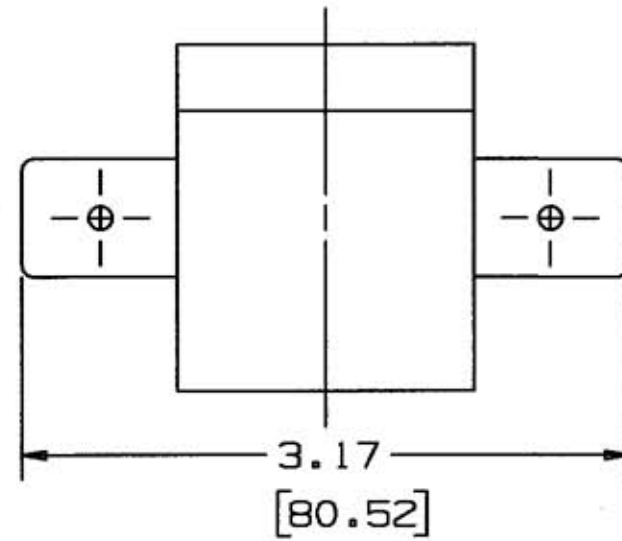
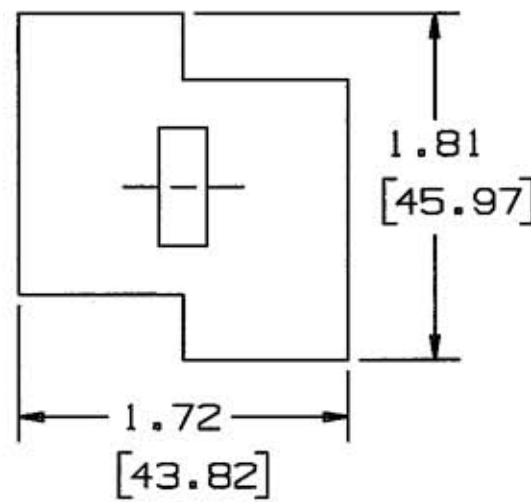
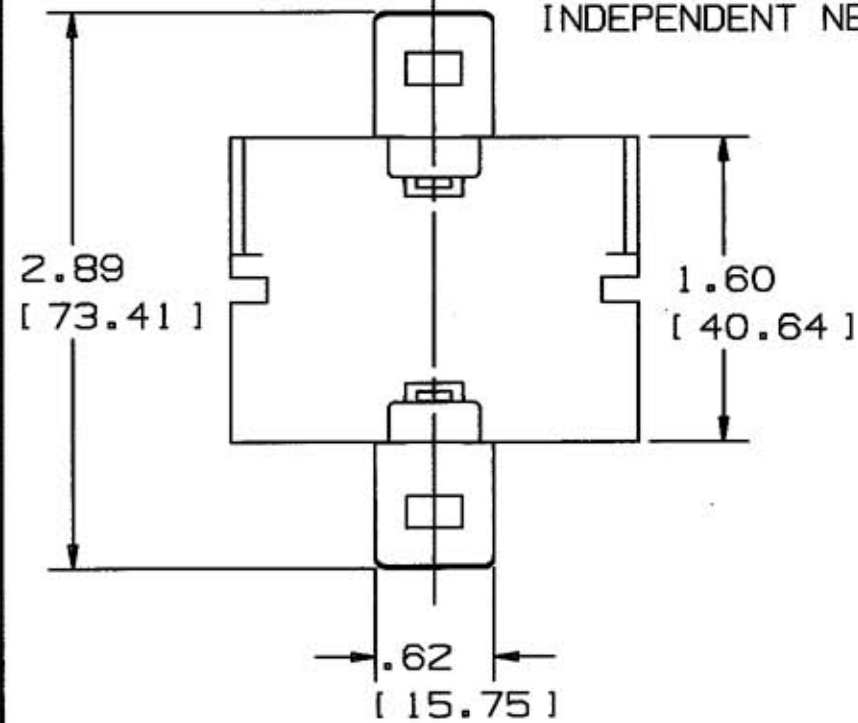
RETAINING CLIP (4)

SPLITTER BODY

SPLITTER422  
SHARED NEUTRAL



SPLITTER332  
INDEPENDENT NEUTRAL



SPLITTER442  
INDEPENDENT NEUTRAL

NOTE:  
1. DIM'S. INCHES [MM].  
2. PRODUCT MUST MEET UL & CSA CONSTRUCTION, PERFORMANCE, & MARKING REQUIREMENTS.

CATALOG NO.	SYSTEM
SPLITTER332	3/3/2 INDEPENDENT NEUTRAL
SPLITTER422	4/2/2 SHARED NEUTRAL
SPLITTER442	4/4/2 INDEPENDENT NEUTRAL

LIST OF PARTS

DESCRIPTION	MATERIAL	FINISH
SPLITTER BODY		BLACK
(4) RETAINING CLIP	STEEL	BLACK

SYM	REVISIONS	APP	DATE
2	ADDED SPLITTER442 & VIEWS PER DCN. 11644 T.J.V.		4-6-04
1	INITIAL RELEASE #10812		3-18-03

THE DESIGN AND DIMENSIONS OF THE PRODUCT SHOWN ON THIS DRAWING ARE SUBJECT TO CHANGE WITHOUT NOTICE

TITLE CUSTOMER DRAWING  
SPLITTER 3/3/2, 4/2/2 & 4/4/2  
INDEPENDENT & SHARED NEUTRAL

TOLERANCES UNLESS OTHERWISE SPECIFIED		WIRING DEVICE-KELLEMS HUBBELL INCORPORATED BRIDGEPORT, CT	
FRACTIONS	±1/64	DR. BY	PAC
DECIMALS	±.005	TR. BY	SCALE 1-1
ANGLES	±2°	CHK'D BY	DATE 3-18-03

DIMENSION SHEET FOR CAT. NO. SPLITTER332, SPLITTER422 & SPLITTER442  
 REPAIRABLE  NON-REPAIRABLE   
 B M-9048 2