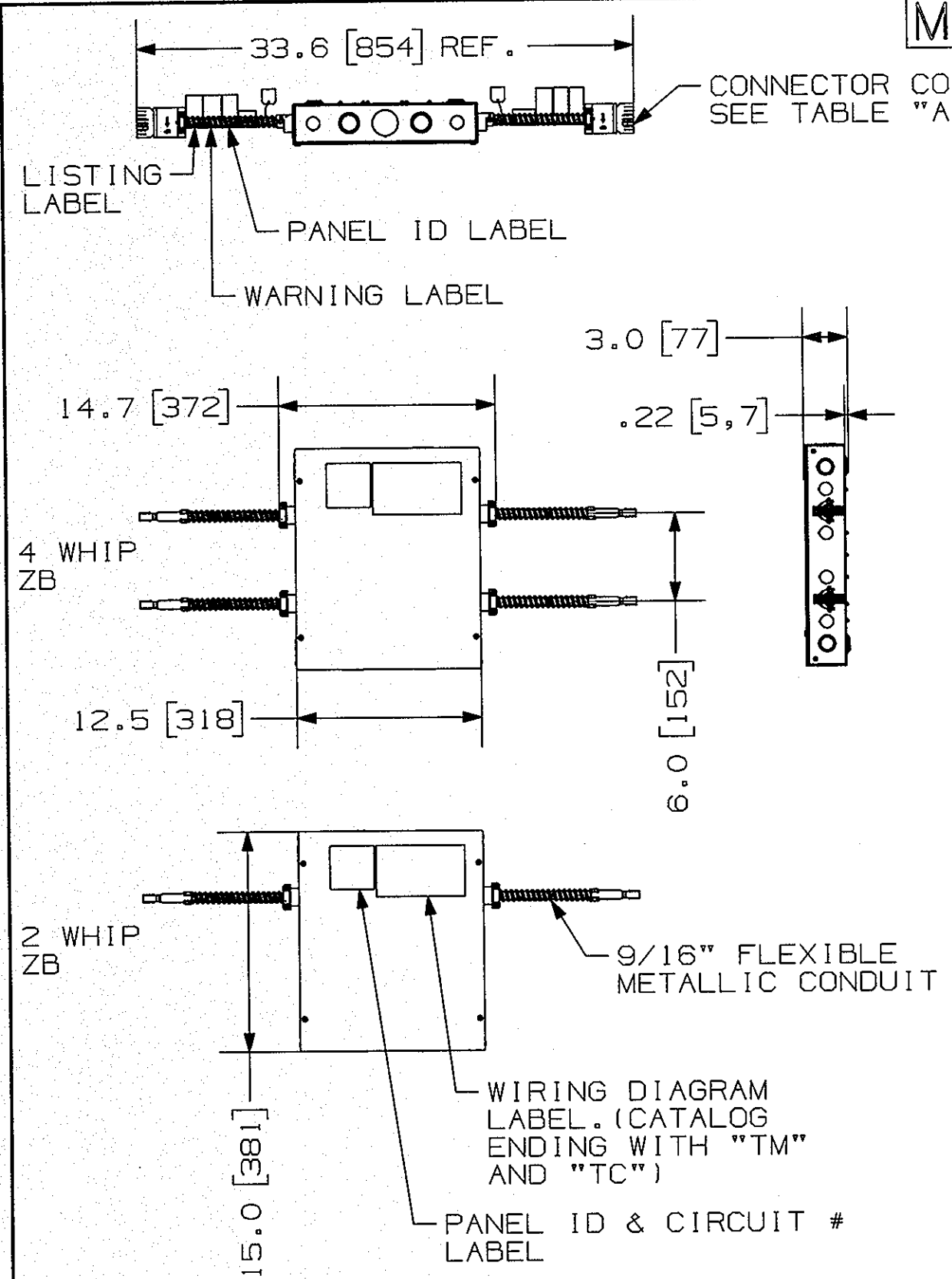


M118943



CAT. #	CONFIGURATION	COLOR "A"	
ZB422S2C4W4TC	4 WHIP, 8-WIRES 4/2/2 (4 HOTS, 2 NEUTRALS, 2 GROUNDS), 2+2 COMMON TERMINAL	GRAY	
ZB422S3C4W4TC	4 WHIP, 8-WIRES 4/2/2 (4 HOTS, 2 NEUTRALS, 2 GROUNDS), 3+1 COMMON TERMINAL		
ZB422S2C4W2TC	2 WHIP, 8-WIRES 4/2/2 (4 HOTS, 2 NEUTRALS, 2 GROUNDS), 2+2, COMMON TERMINAL		
ZB422S3C4W2TC	2 WHIP, 8-WIRES 4/2/2 (4 HOTS, 2 NEUTRALS, 2 GROUNDS), 3+1, COMMON TERMINAL		
ZB422S2C16W4TM	4 WHIP, 8-WIRES 4/2/2 (4 HOTS, 2 NEUTRALS, 2 GROUNDS), 2+2, MULTIPLE TERMINAL		
ZB422S3C16W4TM	4 WHIP, 8-WIRES 4/2/2 (4 HOTS, 2 NEUTRALS, 2 GROUNDS), 3+1, MULTIPLE TERMINAL		
ZB422S2C8W2TM	2 WHIP, 8-WIRES 4/2/2 (4 HOTS, 2 NEUTRALS, 2 GROUNDS), 2+2, MULTIPLE TERMINAL		
ZB422S3C8W2TM	2 WHIP, 8-WIRES 4/2/2 (4 HOTS, 2 NEUTRALS, 2 GROUNDS), 3+1, MULTIPLE TERMINAL		
ZB422S2C16W4P	4 WHIP, 8-WIRES 4/2/2 (4 HOTS, 2 NEUTRALS, 2 GROUNDS), 2+2, PIGTAIL		
ZB422S3C16W4P	4 WHIP, 8-WIRES 4/2/2 (4 HOTS, 2 NEUTRALS, 2 GROUNDS), 3+1, PIGTAIL		
ZB422S2C8W2P	2 WHIP, 8-WIRES 4/2/2 (4 HOTS, 2 NEUTRALS, 2 GROUNDS), 2+2, PIGTAIL		
ZB422S3C8W2P	2 WHIP, 8-WIRES 4/2/2 (4 HOTS, 2 NEUTRALS, 2 GROUNDS), 3+1, PIGTAIL		
ZB332C3W4TC	4 WHIP, 8-WIRES 3/3/2 (3 HOTS, 3 NEUTRALS, 2 GROUNDS) COMMON TERMINAL		BLACK
ZB332C3W2TC	2 WHIP, 8-WIRES 3/3/2 (3 HOTS, 3 NEUTRALS, 2 GROUNDS) COMMON TERMINAL		
ZB332C12W4TM	4 WHIP, 8-WIRES 3/3/2 (3 HOTS, 3 NEUTRALS, 2 GROUNDS) MULTIPLE TERMINAL		
ZB332C6W2TM	2 WHIP, 8-WIRES 3/3/2 (3 HOTS, 3 NEUTRALS, 2 GROUNDS) MULTIPLE TERMINAL		
ZB332C12W4P	4 WHIP, 8-WIRES 3/3/2 (3 HOTS, 3 NEUTRALS, 2 GROUNDS) PIGTAIL		
ZB332C6W2P	2 WHIP, 8-WIRES 3/3/2 (3 HOTS, 3 NEUTRALS, 2 GROUNDS) PIGTAIL		

LIST OF PARTS		
DESCRIPTION	MATERIAL	FINISH
BOTTOM	GALV. STEEL	
COVER	GALV. STEEL	
FLEX CONDUIT	STEEL	ZINC PL.
CONNECTOR	THERMOPLASTIC	
GROUND BUSS	ALUM.	
MOUNTING SCREWS	STEEL	ZINC PL.
TERMINAL STRIP	THERMOPLASTIC	
CONDUIT RETAINER	CAST ALUM.	
GROUND SCREW	STEEL	GREEN FINISH

SYM	REVISIONS	APP	DATE
3	CONDUIT 9/16" WAS 1/2" PER DCN #21027.	DL	2/24/15
2	UPDATE THE PRINT PER DCN #20705.		10/21/14
1	NEW RELEASE PER DCN #20674.		7/9/14

THE DESIGN AND DIMENSIONS OF THE PRODUCT SHOWN ON THIS DRAWING ARE SUBJECT TO CHANGE WITHOUT NOTICE

TITLE
ZONE DISTRIBUTION BOX, 422 & 332 SERIES

TOLERANCES UNLESS OTHERWISE SPECIFIED .XX = ±.01 .XXX = ±.005 ANGLES = ±2°	WIRING DEVICE-KELLEMS HUBBELL INCORPORATED SHELTON, CT	
	DR. BY DL	APP. BY
	TR. BY	SCALE 1:10
	CHK. BY	DATE 03/17/15

NOTES: (UNLESS OTHERWISE SPECIFIED)
1, DIMENSIONS ARE IN INCHES [mm].
2, RATING: 20A 120/208 V.

DIMENSION SHEET FOR CAT. NO. M11894
 SEE TABLE
 REPAIRABLE NON-REPAIRABLE
 B
 M11894
 W