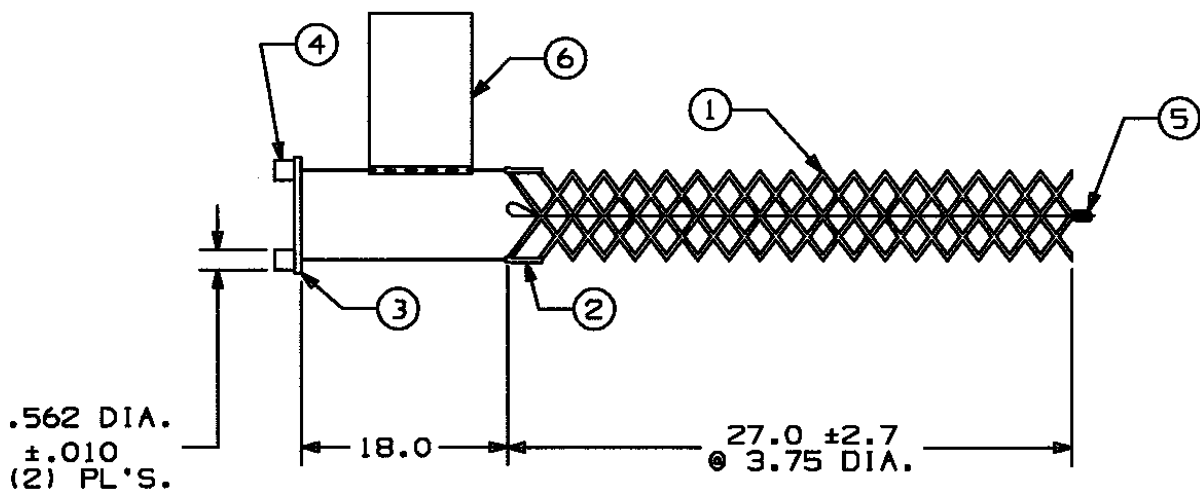


COMPONENT LIST

ITEM NO.	DESCRIPTION	MAT'L	COMPONENT NO.	QTY.
1	STRAND	T.BRZ	302-74-144	12
2	EQUALIZER	SST	304-48-012	2
3	LINK	BRZ	462-48-005	1
4	LUG	BRZ	372-56-018	2
5	LACE	T.BRZ	302-74-012	1
6	TAG	MYLAR		1



NOTES: (UNLESS OTHERWISE SPECIFIED)

- 1) LINEAR TOLERANCES TO BE AS FOLLOWS:
X=.5
XX=.05
XXX=.015

IN ACCEPTING OUR DRAWINGS OR BLUEPRINTS FOR QUOTATION OR OTHER PURPOSES, YOU AGREE NOT TO DISCLOSE TO OTHERS THE IDEAS, INFORMATION, OR DESIGNS THEREIN SHOWN, AND THAT YOU WILL MAKE NO USE OF OUR DRAWINGS OR BLUEPRINTS OR OF THE IDEAS, INFORMATION, OR DESIGNS THEREIN SHOWN WITHOUT OUR PERMISSION.

TITLE:

GRIP - SST - STANDARD SUPPORT
SPLIT LACE CLOSING, SINGLE WEAVE
UNIVERSAL BALE
DIA. RA. 3.50-3.99
DESCRIPTION: RSU 350-18
APP. BRK. STR. (LBS.) = 4900

TOLERANCES UNLESS OTHERWISE SPECIFIED

~~±.001~~ → ±.005
~~±.002~~ → ±.015
~~±.003~~ → ±.025
ANGLE TOL. ± 2°

HUBBELL INCORPORATED
KELLEMS DIVISION
STONINGTON, CT

DR. BY: KJW APP. BY: MLF

PROJECT NO.

TR. BY

SCALE NONE

CHK. BY JLW

DATE: 3/19/93

DR. NO.

022-02-061

REV.

R