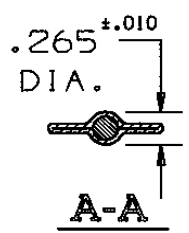
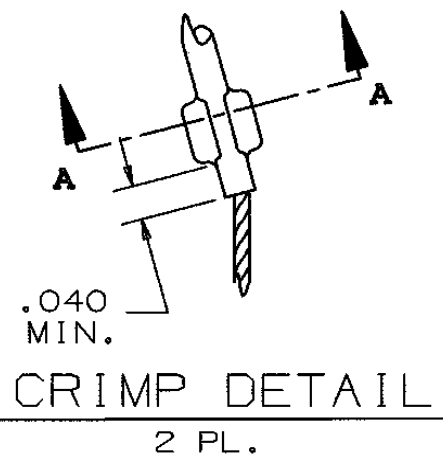
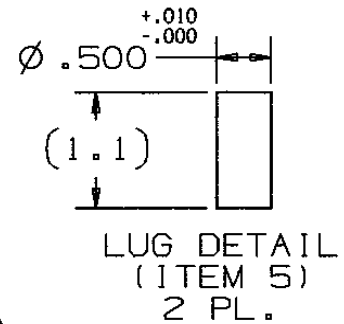


COMPONENT LIST				
ITEM NO.	DESCRIPTION	MAT'L	COMPONENT NO.	QTY.
1	STRAND	T BRZ	302-01-005	-
2	EQUALIZER	SST	304-48-008	2
3	EYE	SST	304-46-080	1
4	LACE	T BRZ	302-74-004	1
5	LUG	ALUM	341-56-002	2
6	EYE BALE	T BRZ	302-54-004	1
7	TAG	MYLAR		1



- NOTES:
- APPROXIMATE BREAKING STRENGTH STATED IN TITLE BLOCK APPLIES TO PRIMARY EYE AND MESH ONLY.
 - BREAKING STRENGTH OF SECONDARY BALE (ITEM 6) SHALL BE 700 LBS MINIMUM.
 - SECONDARY BALE SHALL NOT BE USED AS SOLE PERMANENT MEANS OF HARDWARE ATTACHMENT.

SUPERSEDES DWG DATED 10-24-68

IN ACCEPTING OUR DRAWINGS OR BLUEPRINTS FOR QUOTATION OR OTHER PURPOSES, YOU AGREE NOT TO DISCLOSE TO OTHERS THE IDEAS, INFORMATION, OR DESIGNS THEREIN SHOWN, AND THAT YOU WILL MAKE NO USE OF OUR DRAWINGS OR BLUEPRINTS OR OF THE IDEAS, INFORMATION, OR DESIGNS THEREIN SHOWN WITHOUT OUR PERMISSION.

TITLE GRIP, STD. SUPPORT SPLIT - LACE CLOSING, SINGLE WEAVE, SINGLE "U" EYE WITH SECONDARY BALE
DIA. RA 1.00-1.25
APPROX BRK STR. 1610# ±20%

TOLERANCES UNLESS OTHERWISE SPECIFIED .X = ±.5 .XX = ±.05 .XXX = ±.015 ANGLE TOL. ± 2°	HUBBELL INCORPORATED KELLEMS DIVISION STONINGTON, CT	
	DR. BY AWF	APP. BY JLW
PROJECT NO.	TR. BY JVO	SCALE N/A
	CHK. BY JLW	DATE 1/25/96

DR. NO.	REV.
022-02-1005	N

SHEET 1 OF 1