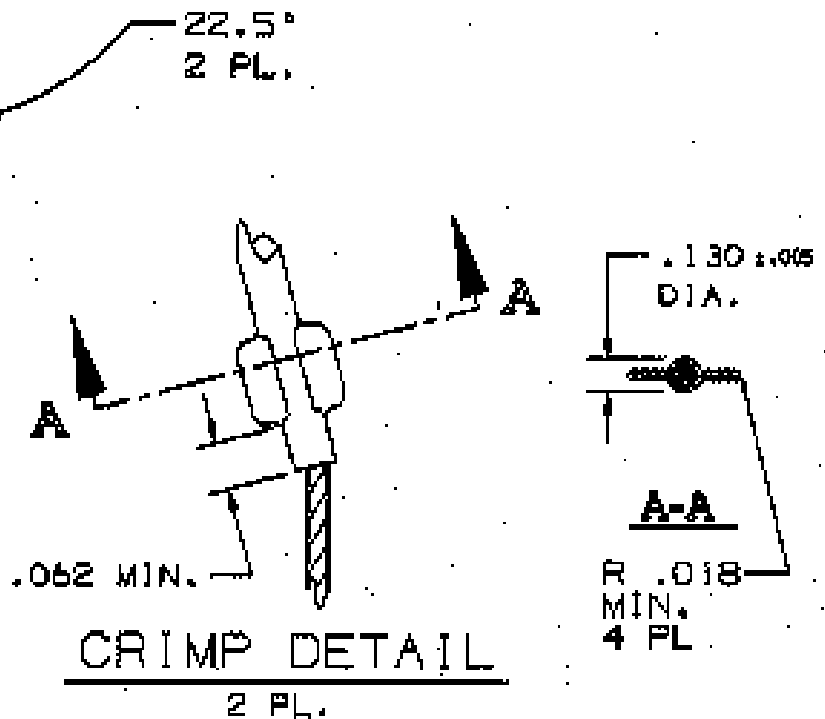
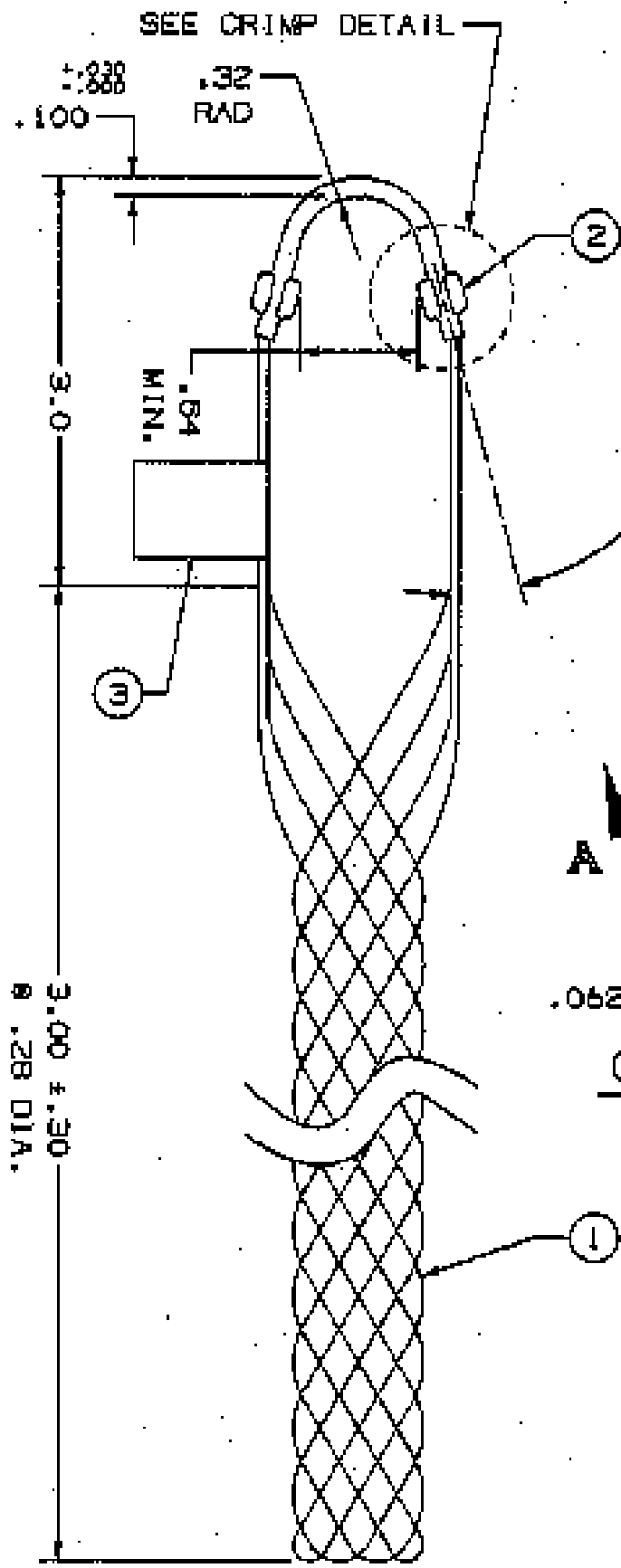


**COMPONENT LIST**

ITEM NO.	DESCRIPTION	MAT'L	COMPONENT NO.	QTY.
1	STRAND	T 8FZ	302-01-001	-
2	EYE	SET	504-15-087	1
3	TAG	MYLAR		1



IN ACCEPTING OUR DRAWINGS OR BLUEPRINTS FOR QUOTATION OR OTHER PURPOSES, YOU AGREE NOT TO DISCLOSE TO OTHERS THE IDEAS, INFORMATION, OR DESIGNS THEREIN SHOWN, AND THAT YOU WILL MAKE NO USE OF OUR DRAWINGS OR BLUEPRINTS OR OF THE IDEAS, INFORMATION, OR DESIGNS THEREIN SHOWN WITHOUT OUR PERMISSION.

TITLE GRIP, STD. SUPPORT, CLOSED MESH, SINGLE WEAVE, SINGLE "U" EYE DIA. RA .230-.320 APPROX BRK STR. 300# ±20%

TOLERANCES UNLESS OTHERWISE SPECIFIED X ± .01 XX ± .05 XXX ± .010 ANGLE TOL. ± 2°	HUBBELL INCORPORATED KELLEYS DIVISION STONINGTON, CT	
	DR. BY EF	APP. BY JLW
PROJECT NO.	TA. BY JVO	SCALE N/A
	CHK. BY JLW	DATE 1/25/95

DR. NO.	REV.
022-29-1001	H

SUPERSEDES DWG DATED 5-31-81