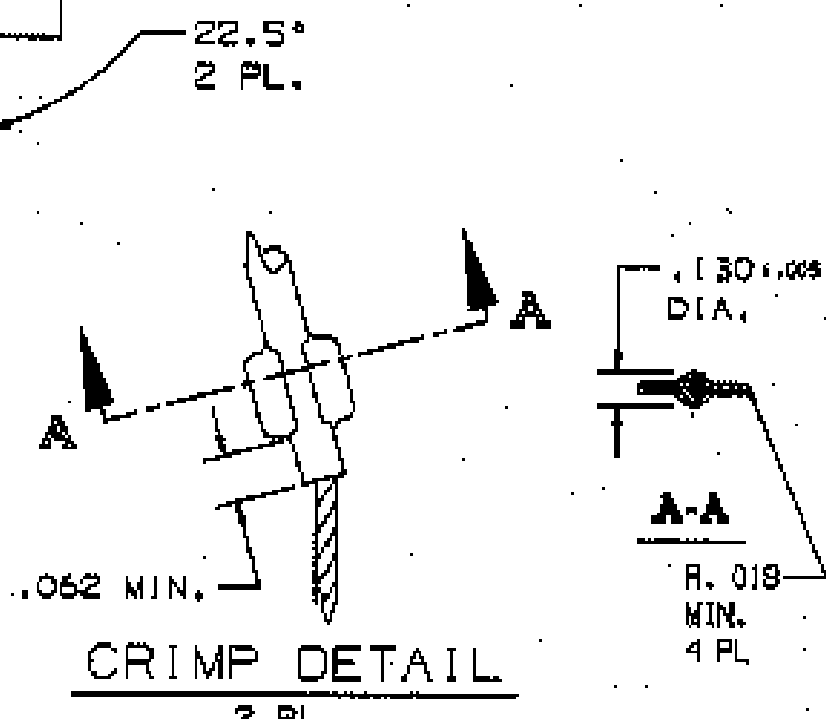
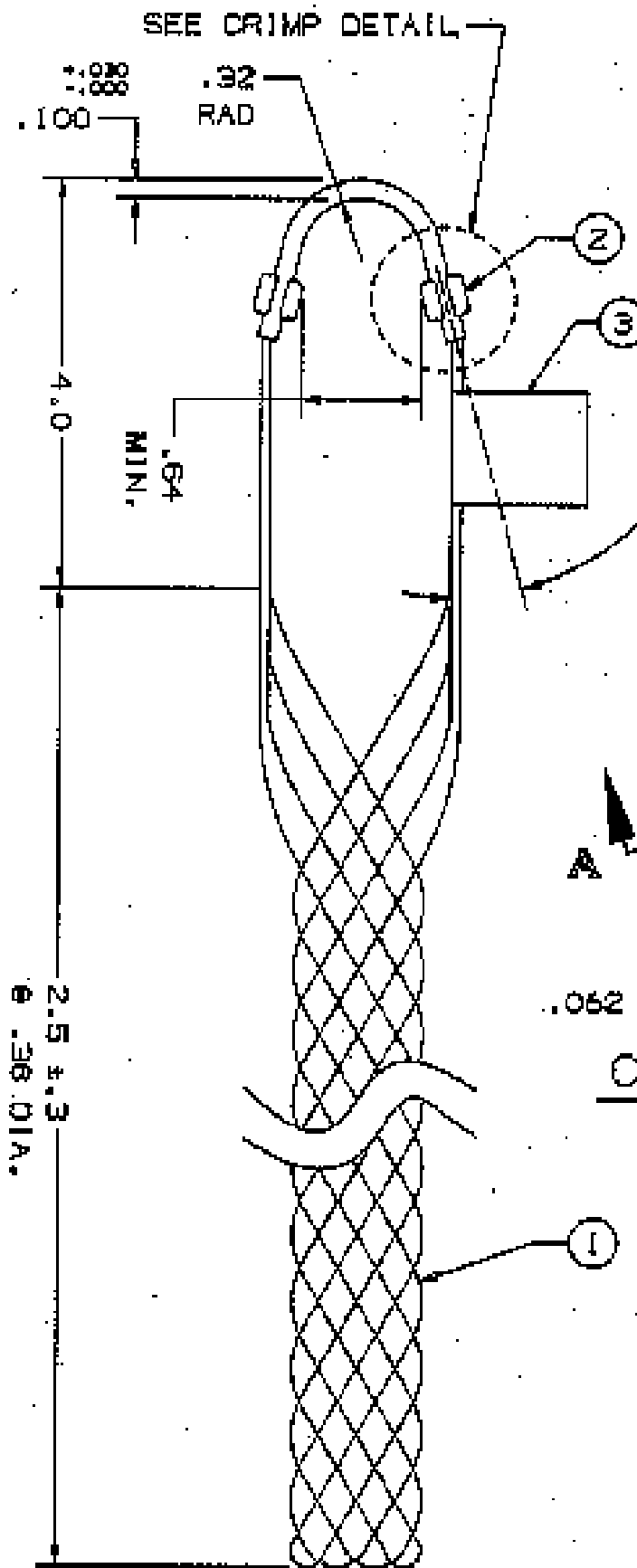


### COMPONENT LIST

ITEM NO.	DESCRIPTION	MAT'L	COMPONENT NO.	QTY.
1	STRAND	T BRZ	302-91-001	-
2	EYE	SST	304-8-087	1
3	TAB	NYLAR		1



IN ACCEPTING OUR DRAWINGS OR BLUEPRINTS FOR QUOTATION OR OTHER PURPOSES, YOU AGREE NOT TO DISCLOSE TO OTHERS THE IDEAS, INFORMATION, OR DESIGNS THEREIN SHOWN AND THAT YOU WILL MAKE NO USE OF OUR DRAWINGS OR BLUEPRINTS OR OF THE IDEAS, INFORMATION, OR DESIGNS THEREIN SHOWN WITHOUT OUR PERMISSION.

TITLE GRIP, FIBER OPTIC SUPPORT, CLOSED MESH, SINGLE WEAWE, SINGLE "U" EYE DIA. RA .30-.38 APPROX BRK STR. 300# ±20%

TOLERANCES UNLESS OTHERWISE SPECIFIED .015 ± .005 .030 ± .005 .0002 ± .0015 ANGLE TOL. ± 2°	HUBBELL INCORPORATED HOLLIS DIVISION BOSTON, CT	
	DR. BY DE	APP. BY PFS
PROJECT NO.	TR. BY RCM	SCALE N/A
	CHK. BY PFS	DATE 3/5/58

DR. NO.	REV.
022-29-1002	G

SUPERSEDES DWG DATED 5/81

SHEET 1 OF 1