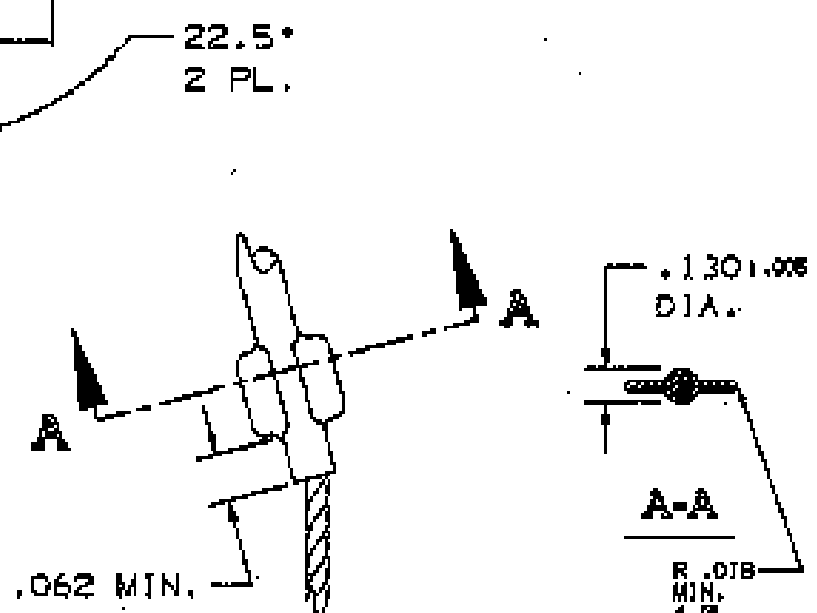
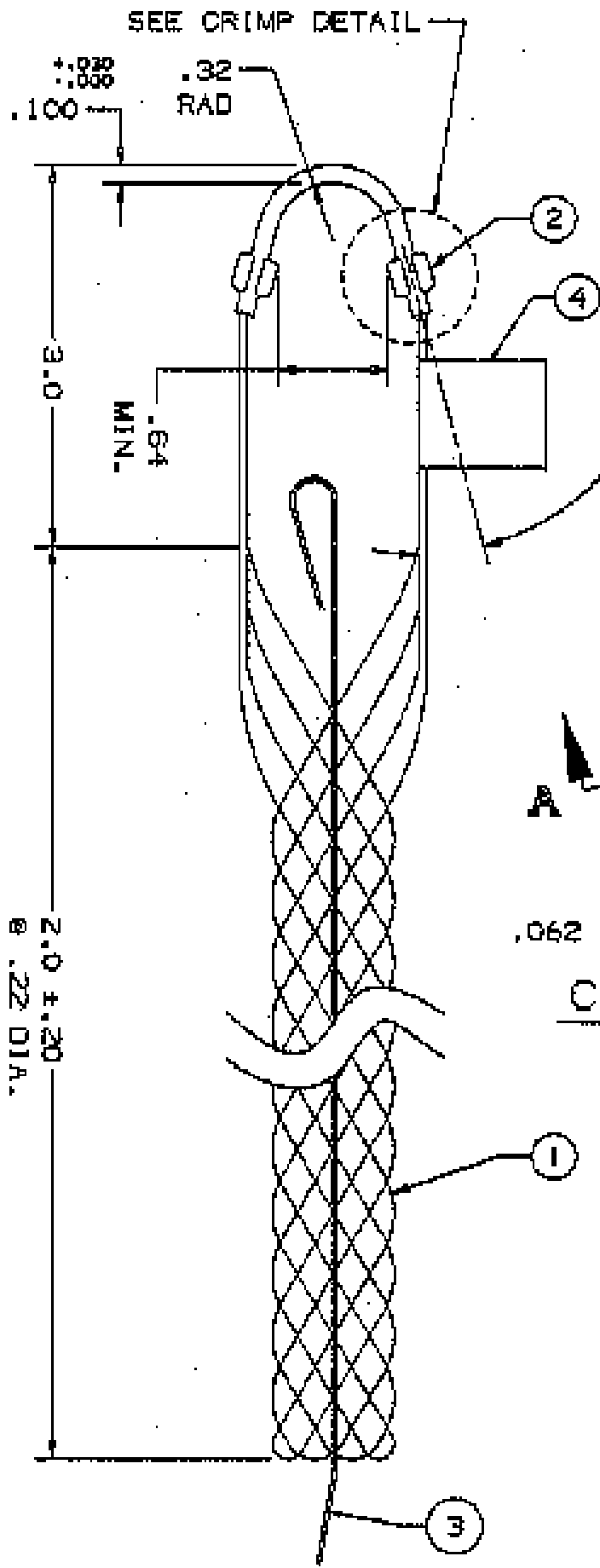


COMPONENT LIST

ITEM NO.	DESCRIPTION	MAT'L	COMPONENT NO.	QTY.
1	STRAND	7 BRZ	302-01-001	-
2	EYE	SST	304-45-087	1
3	ROD	SST	304-63-025	1
4	TAB	NYLON		1



CRIMP DETAIL
2 PL.

IN ACCEPTING OUR DRAWINGS OR BLUEPRINTS FOR QUOTATION OR OTHER PURPOSES, YOU AGREE NOT TO DISCLOSE TO OTHERS THE IDEAS, INFORMATION, OR DESIGNS THEREIN SHOWN, AND THAT YOU WILL MAKE NO USE OF OUR DRAWINGS OR BLUEPRINTS OR OF THE IDEAS, INFORMATION, OR DESIGNS THEREIN SHOWN WITHOUT OUR PERMISSION.

TITLE GRIP FIBER OPTIC SUPPORT, SPLIT ROD CLOSING, SINGLE WEAVE, SINGLE "U" EYE DIA. RA .18 ± .25 APPROX BRK STR. 300 ± 20%

TOLERANCES UNLESS OTHERWISE SPECIFIED X ± .005 XX ± .008 XXX ± .012 ANGLE TOL. ± 2'	HUBBELL INCORPORATED KELLEYS DIVISION STORINGTON, CT
PROJECT NO.	DR. BY DF APP. BY FFS TR. BY RDM EDLME N/A CHK. BY FFS DATE 3/5/88

DR. NO. **022-29-1016** REV. J

SUPERSEDES DWG DATED 5/81