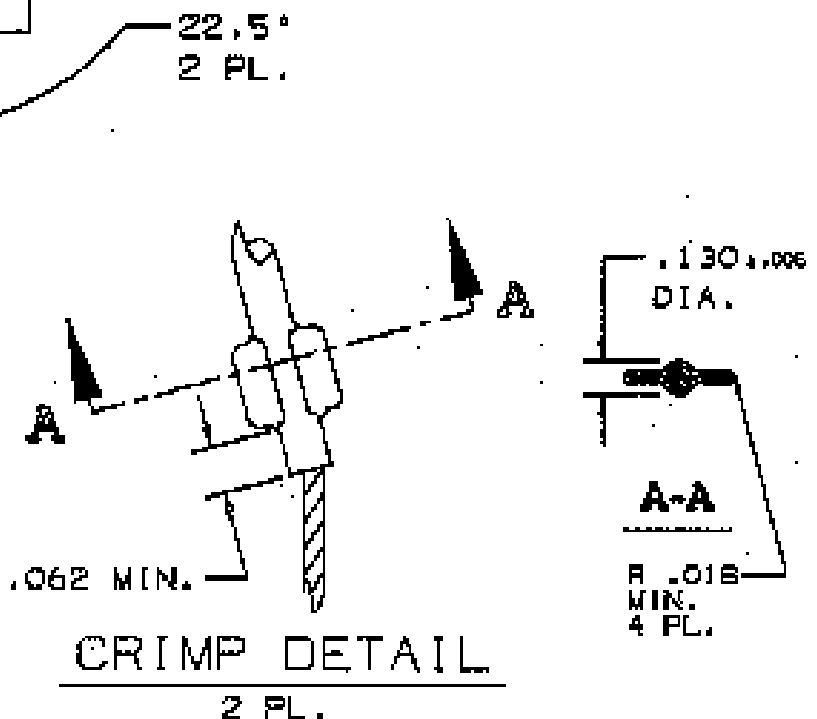


COMPONENT LIST				
ITEM NO.	DESCRIPTION	MAT'L	COMPONENT NO.	QTY.
1	STRAND	T BRZ	302-01-001	1
2	EYE	SST	304-4B-087	1
3	ROD	SST	304-63-025	1
4	TAE	MYLAR		1



CRIMP DETAIL

IN ACCEPTING OUR DRAWINGS OR BLUEPRINTS FOR QUOTATION OR OTHER PURPOSES, YOU AGREE NOT TO DISCLOSE TO OTHERS THE IDEAS, INFORMATION, OR DESIGNS THEREIN EXCEPT AS THAT YOU WILL MAKE NO USE OF OUR DRAWINGS OR BLUEPRINTS OR OF THE IDEAS, INFORMATION, OR DESIGNS THEREIN SHOWN WITHOUT OUR PERMISSION.

TITLE GRIP, STD. SUPPORT, SPLIT ROD CLOSING, SINGLE WEAVE, SINGLE "U" EYE
DIA. RA .23-.32
APPROX BRK STR. 300# ±20%

TOLERANCES UNLESS OTHERWISE SPECIFIED
 .X ± .005
 .XX ± .0025
 .XXX ± .0015
 ANGLE TOL. ± 2°

HUBBELL INCORPORATED
 KELLING DIVISION
 BURLINGTON, CT

DR. BY DF APP. BY JLW
 PROJECT NO. TR. BY JVD SCALE N/A
 CHK. BY JLW DATE 1/25/55

DR. NO. 022-29-1017 REV. J

SUPERSEDES DWG DATED 5-31-51