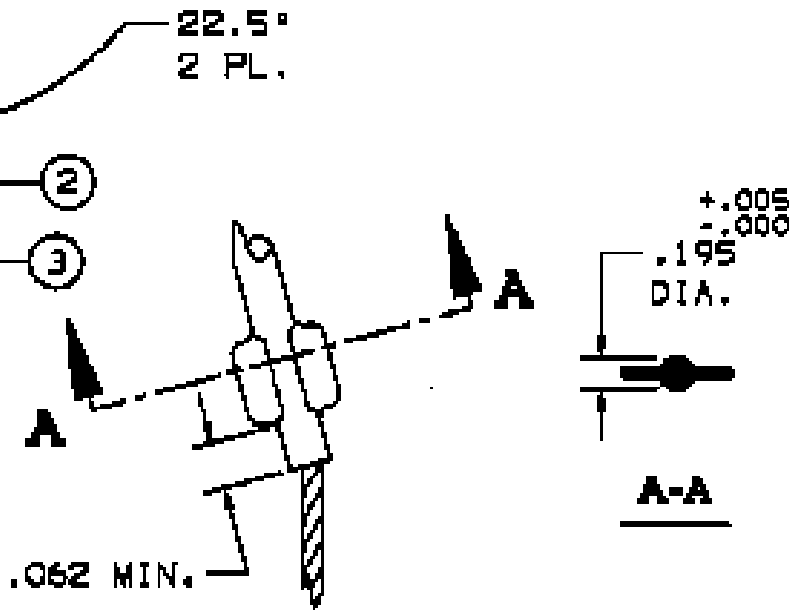
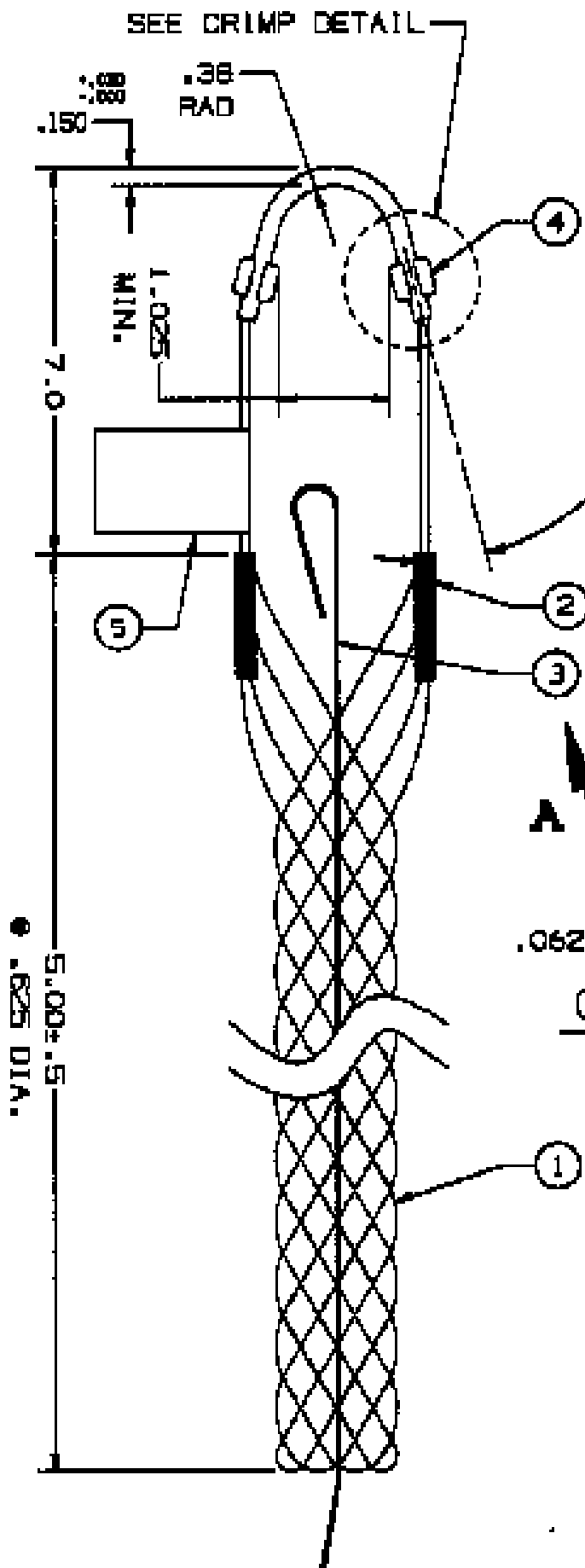


**COMPONENT LIST**

ITEM NO.	DESCRIPTION	MAT'L	COMPONENT NO.	QTY.
1	STRAND	T BRZ	302-01-002	-
2	EQUALIZER	BRZ	302-47-002	2
3	ROD	SST	304-53-005	1
4	EYE	SST	304-46-078	1
5	TAB	NYLON		1



**CRIMP DETAIL**  
2 PL.

• .625 DIA.  
5.00 ± .015

IN ACCEPTING OUR DRAWINGS OR BLUEPRINTS FOR QUOTATION OR OTHER PURPOSES YOU AGREE NOT TO DISCLOSE TO OTHERS THE IDEAS, INFORMATION, OR DESIGN THEREIN SHOWN, AND THAT YOU WILL MAKE NO USE OF OUR DRAWINGS OR BLUEPRINTS OR OF THE IDEAS, INFORMATION, OR DESIGN THEREIN SHOWN WITHOUT OUR PERMISSION.

**TITLE** GRIP, FIBER OPTIC SUPPORT, SPLIT ROD CLOSING, SINGLE WEAVE, SINGLE "U" EYE, DIA. RA. .56-.71  
APPROX BRK STR. 800# ±20%

TOLERANCES UNLESS OTHERWISE SPECIFIED  
 .24 = ±.01  
 .25 = ±.02  
 .26 = ±.015  
 ANGLE TOL. ± 2°

**HUBBELL INCORPORATED**  
 KELLIDG DIVISION  
 STONINGTON, CT

DR. BY UF	APP. BY JLW
TR. BY REM	SCALE N/A
CHK. BY JLW	DATE 5/28/95

DR. NO. **022-29-1021** REV. **E**