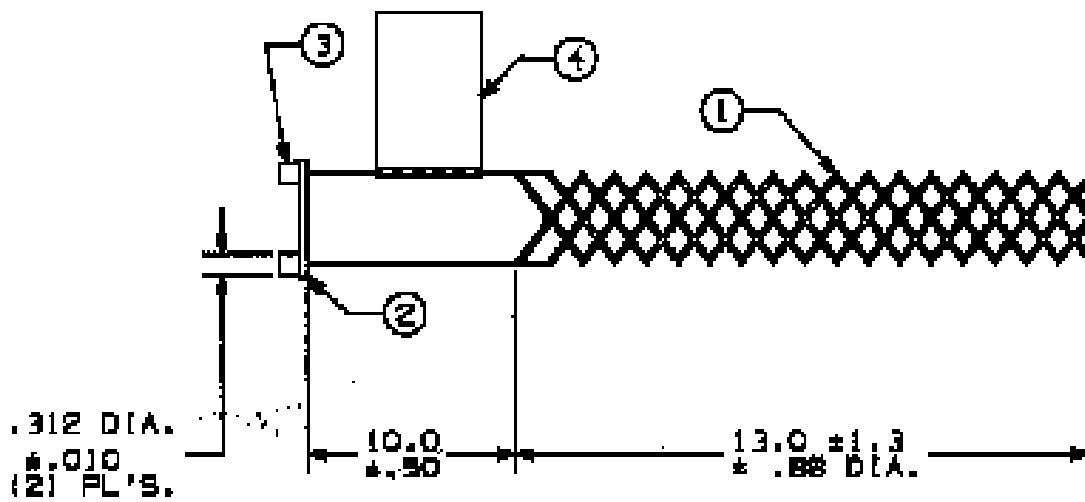


### COMPONENT LIST

ITEM NO.	DESCRIPTION	MAT'L	COMPONENT NO.	QTY.
1	STRAND	SST	304-01-010	
2	LINK	BRZ	372-55-002	1
3	LUG	BRZ	372-56-012	2
4	TAB	MYLAR	309-77-0647	1



IN ACCEPTING OUR DRAWINGS OR BLUEPRINTS FOR QUOTATION OR OTHER PURPOSES, YOU AGREE NOT TO DISCLOSE TO OTHERS THE IDEAS, INFORMATION, OR DESIGNS THEREIN SHOWN, AND THAT YOU WILL MAKE NO USE OF OUR DRAWINGS OR BLUEPRINTS OR OF THE IDEAS, INFORMATION, OR DESIGNS THEREIN SHOWN WITHOUT OUR PERMISSION.

TITLE GRIP - SST - STANDARD SUPPORT  
CLOSED MESH, DOUBLE WEAVE  
UNIVERSAL GALE  
DIA. RA. .75-.99  
DESCRIPTION: RU 075-D-85-10  
APP. BRK. STR. (LBS.) ± 4130

TOLEANCES UNLESS OTHERWISE SPECIFIED  
 .01 ± .01  
 .02 ± .02  
 .03 ± .03  
 .04 ± .04  
 ANGLE TOL. ± 2°

**HUBBELL INCORPORATED**  
 KILLBUCK DIVISION  
 STONINGTON, CT

PROJECT NO.

DR. BY KJM	APP. BY MLP
TRN. BY	SCALE NONE
CHK. BY PPS	DATE 3/17/93

DR. NO.

024-01-100

REV.

F