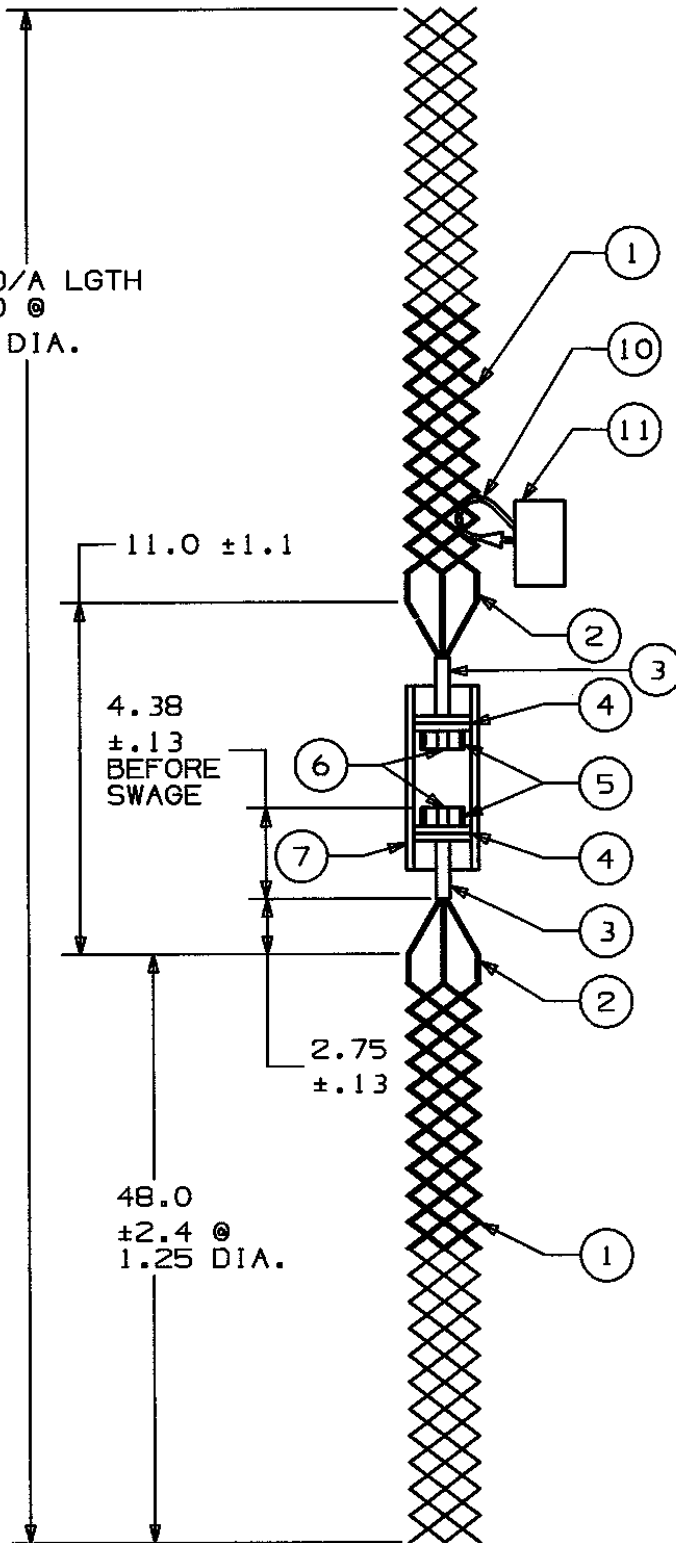


REF O/A LGTH
107.0 @
1.25 DIA.



SUPERSEDES DWG. DATED 1/2/80

COMPONENT LIST

ITEM NO.	DESCRIPTION	MAT'L	COMPONENT NO.	QTY.
1	MESH	GAL.STL.	373-01-009	-
2	SHOULDERS	ALU.	331-43-006	12
3	BUSHING	STL	333-58-004	2
4	WASHER	PLASTIC	316-21-004	4
5	LUG	STL	333-56-010	2
6	TUBE	STL	303-43-009	2
7	SWIVEL	ØTL	303-48-004	1
8	INSTRUCTIONS	PAPER	309-20-103	1
10	FASTENER	PLASTIC	316-20-001	2
11	KELLTAG	MYLAR		1

IN ACCEPTING OUR DRAWINGS OR BLUEPRINTS FOR QUOTATION OR OTHER PURPOSES, YOU AGREE NOT TO DISCLOSE TO OTHERS THE IDEAS, INFORMATION, OR DESIGNS THEREIN SHOWN, AND THAT YOU WILL MAKE NO USE OF OUR DRAWINGS OR BLUEPRINTS OR OF THE IDEAS, INFORMATION, OR DESIGNS THEREIN SHOWN WITHOUT OUR PERMISSION.

TITLE

GRIP-GALV.STL.-PULLING-SWIVEL WIRE ROPE-CLOSED MESH, MULTI WEAVE ROTATING SWIVEL, FOR 1.25-1.37 WIRE ROPE.
DESCR. 1 1/4- 1 3/8 SWR
APPROX. BRK. STR. 20,000 #

TOLERANCES UNLESS OTHERWISE SPECIFIED
.XX = ±.010
.XXX = ±.005
.XXXX = ±.0025
ANGLE TOL. ± 1°

HUBBELL INCORPORATED
KELLEMS DIVISION
STONINGTON, CT

DR. BY: AMF	APP. BY:
TR. BY RTK	SCALE N/A
CHK. BY	DATE: 9/2/98

DR. NO.

033-17-005

REV.

G

SHEET 1 OF 1