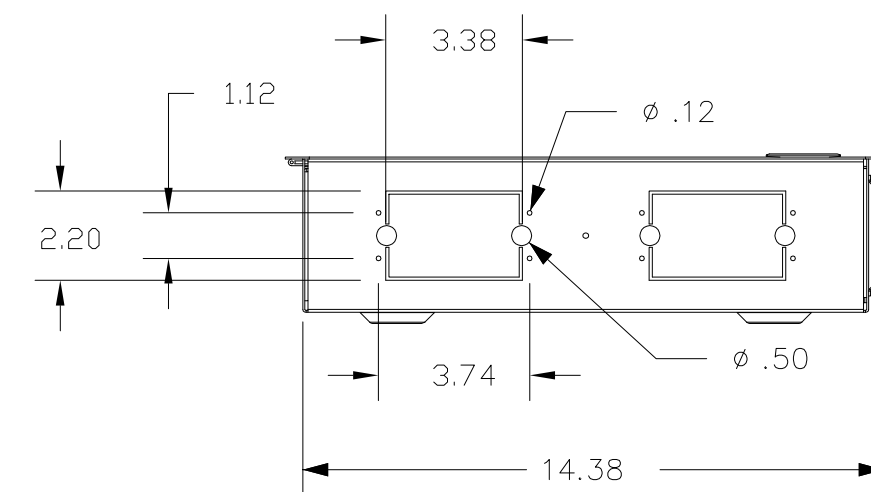
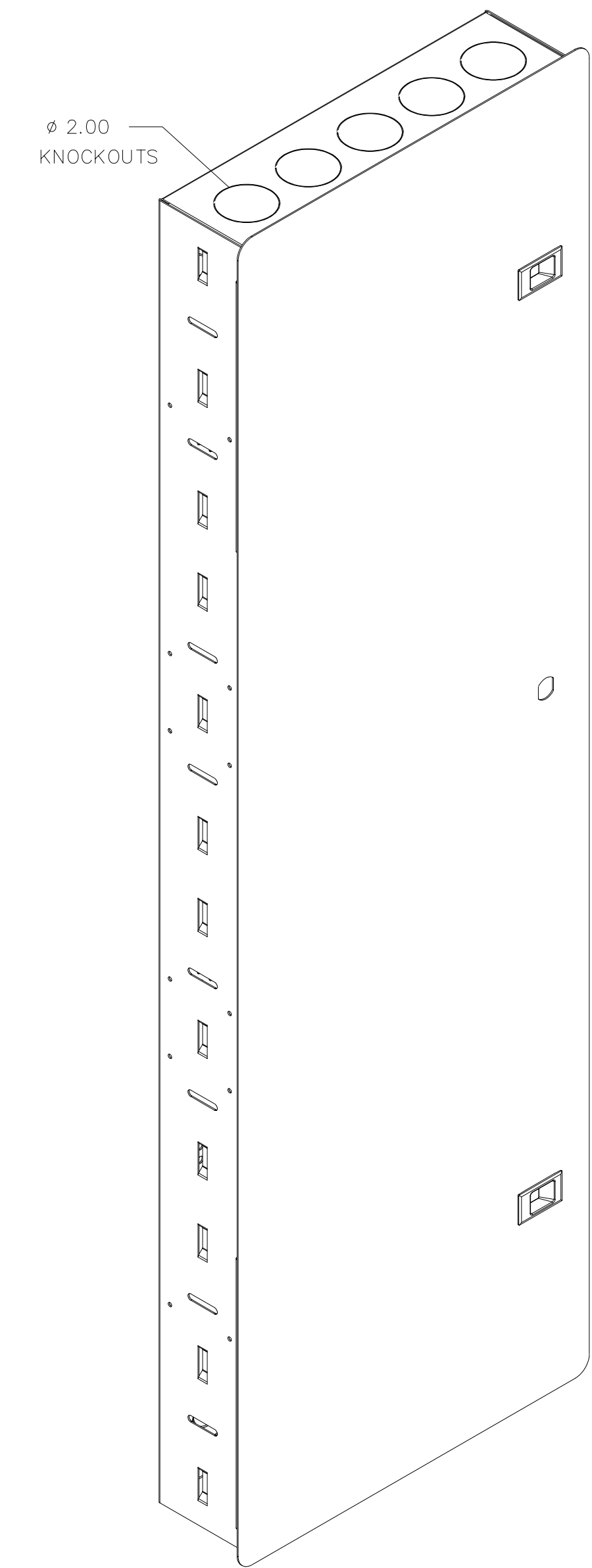
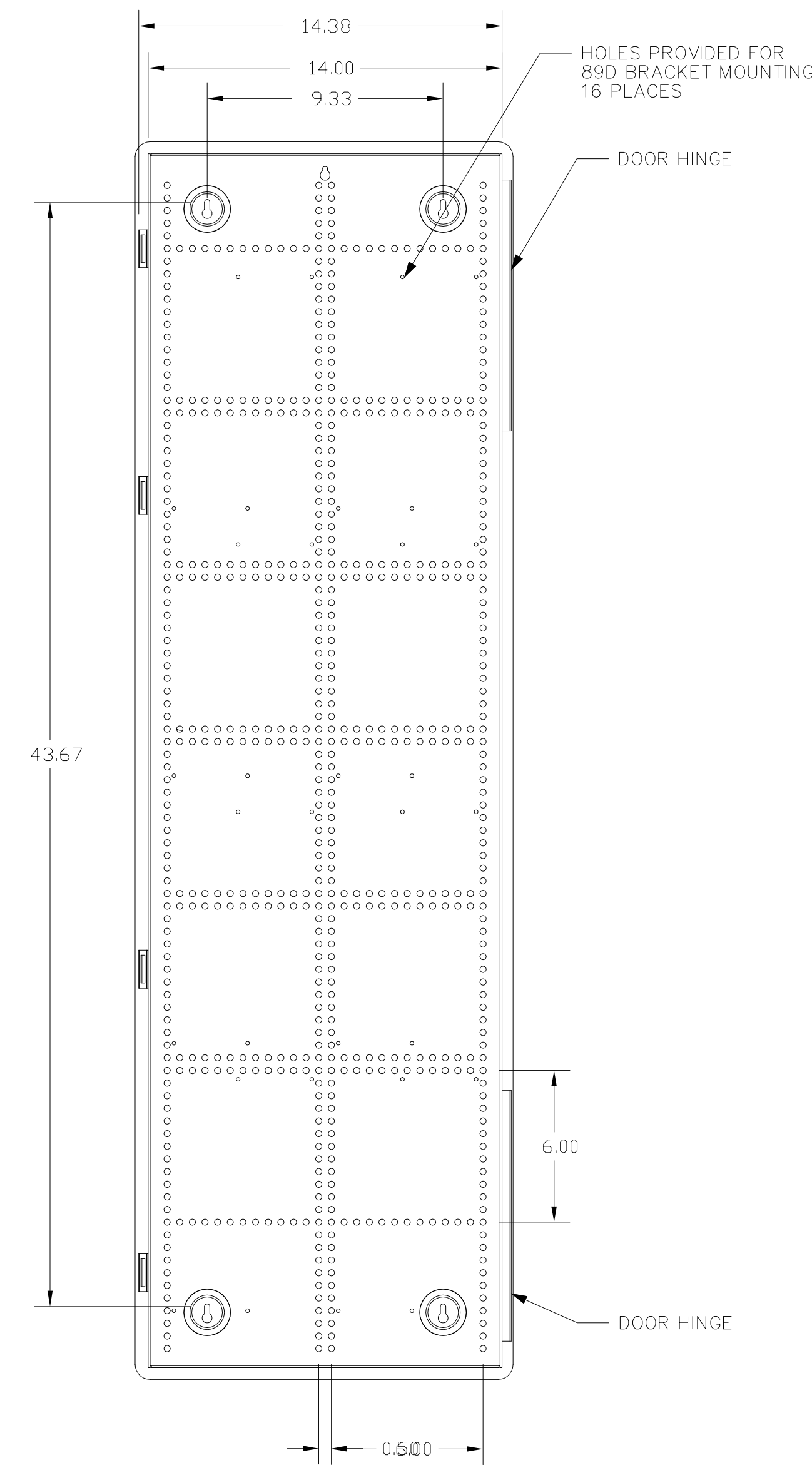
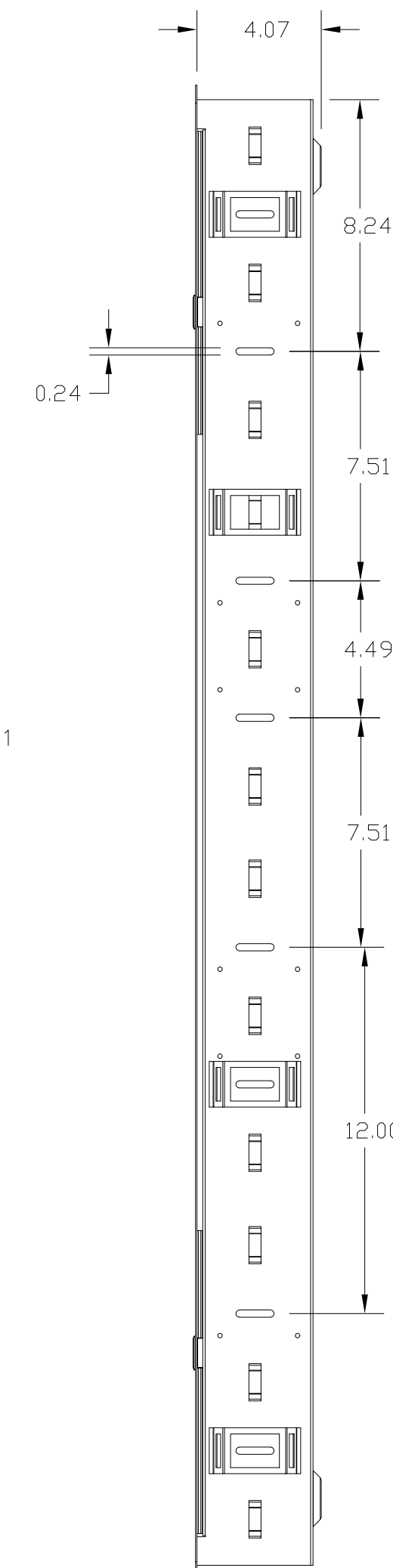
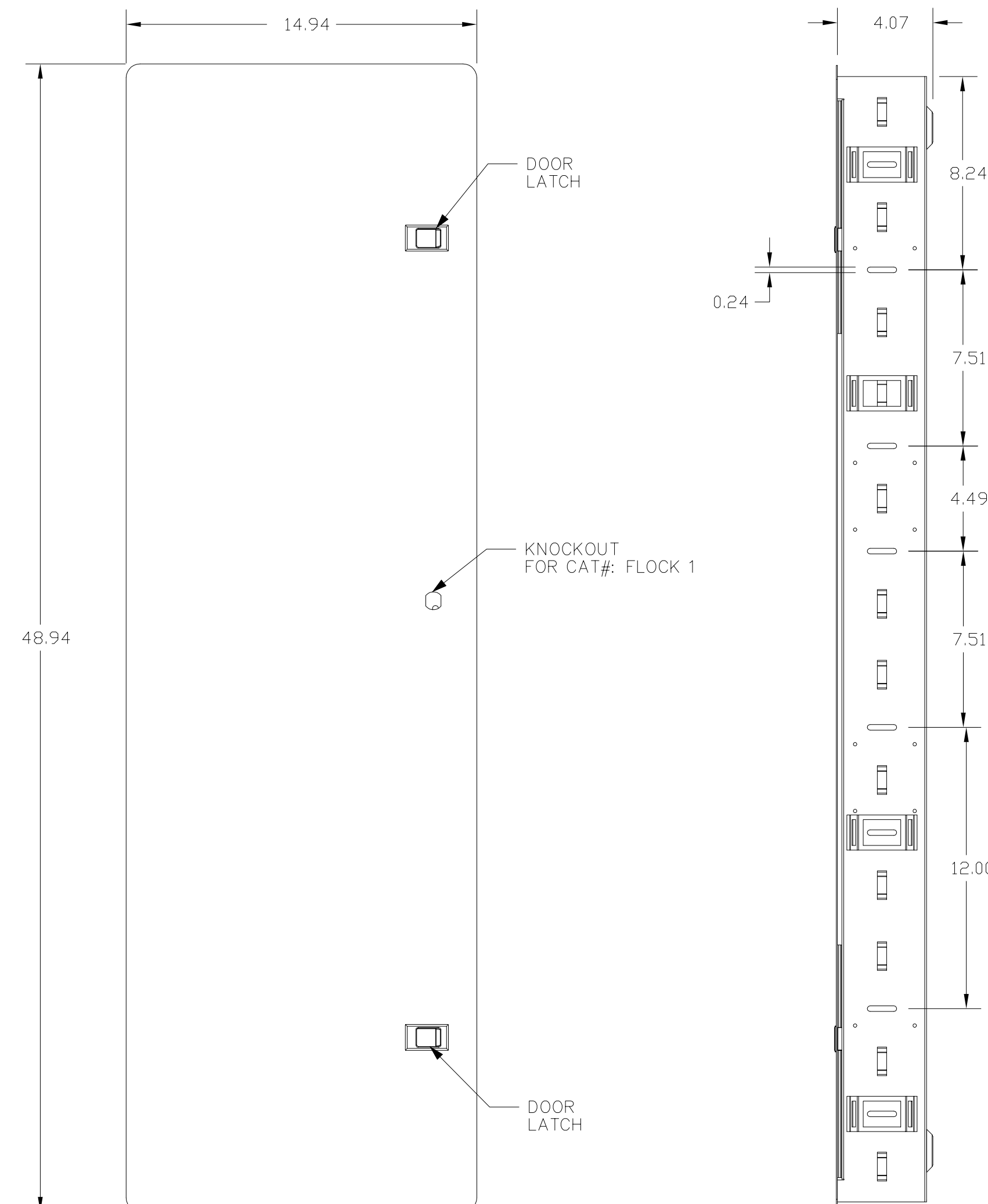
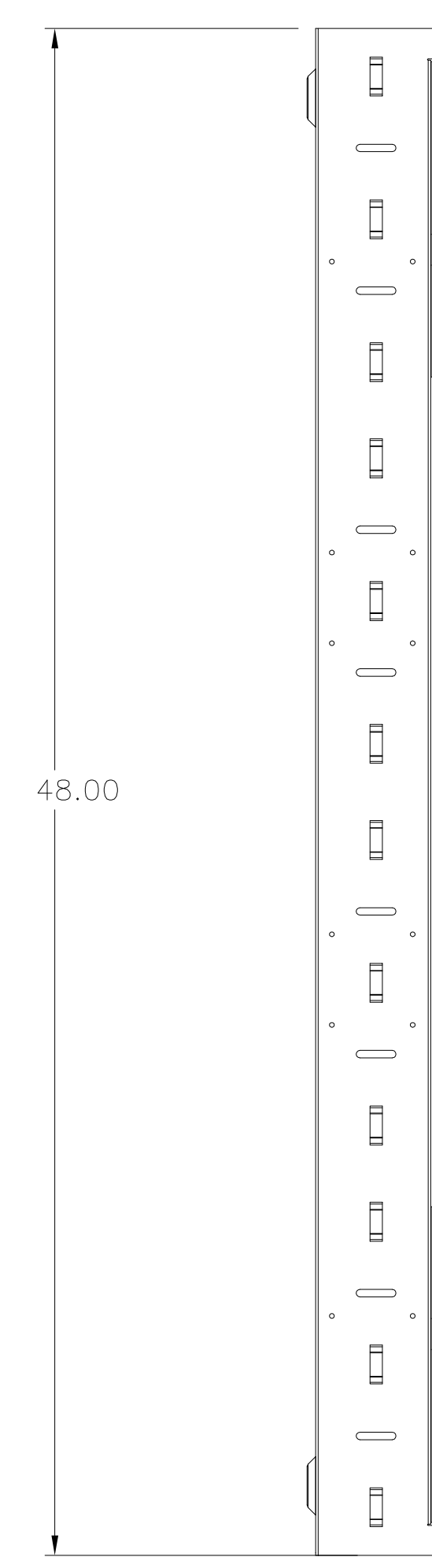
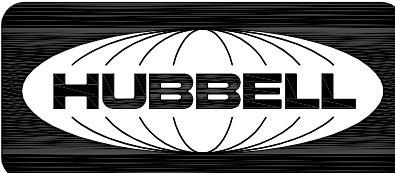


CATALOG NUMBER	DESCRIPTION
NSOBX48	48" HIGH HOME/WORK™ BOX



- NOTES:
1. SURFACE FINISH: POWDER COAT POLYESTER WHITE TEXTURE
 2. ASSEMBLY CONTAINS:
 - (1) INSTRUCTION SHEET
 - (1) BOX
 - (4) NYLON PUSH PIN
 3. SPECIFICATION ARE SUBJECT TO CHANGE WITHOUT NOTICE.

Created on AUTOCAD	DIMENSIONING AND TOLERANCE PER ANSI Y14.5M-1982 UNLESS OTHERWISE SPECIFIED, DIMENSIONS ARE IN INCHES (MM). TOLERANCES .X = ±.03 (.8) .XX = ±.02 (.4) .XXX = ±.010 (.25) ANGLE TOL ±1°		PROJECT REFERENCE: 2004-181		 Hubbell Premise Wiring HUBBELL INCORPORATED (Delaware) 14 Lord's Hill Road, Stonington, Connecticut 06378
	IN ACCEPTING OUR DRAWINGS, BLUEPRINTS, OR SUPPORTING DOCUMENTATION FOR QUOTATION OR OTHER PURPOSES, YOU AGREE NOT TO DISCLOSE TO OTHERS THE IDEAS, INFORMATION, OR DESIGNS SHOWN HEREIN, AND THAT YOU WILL MAKE NO USE OF SAME WITHOUT PERMISSION		MATERIAL:		
	DRAWN BY: N RICHARDS 08-31-06		TITILE: HOME/WORK 48" BOX ASSEMBLY		SIZE: DRAWING NO. D HWS12228C
	CHECKED BY:		APPROVED BY:		REV. A
SCALE: NTS		SHEET 1 OF 1			

REV.	ECN	DATE	DESCRIPTION	CHG BY	APPD BY
A	5950	08/31/06	INITIAL RELEASE	NJR	