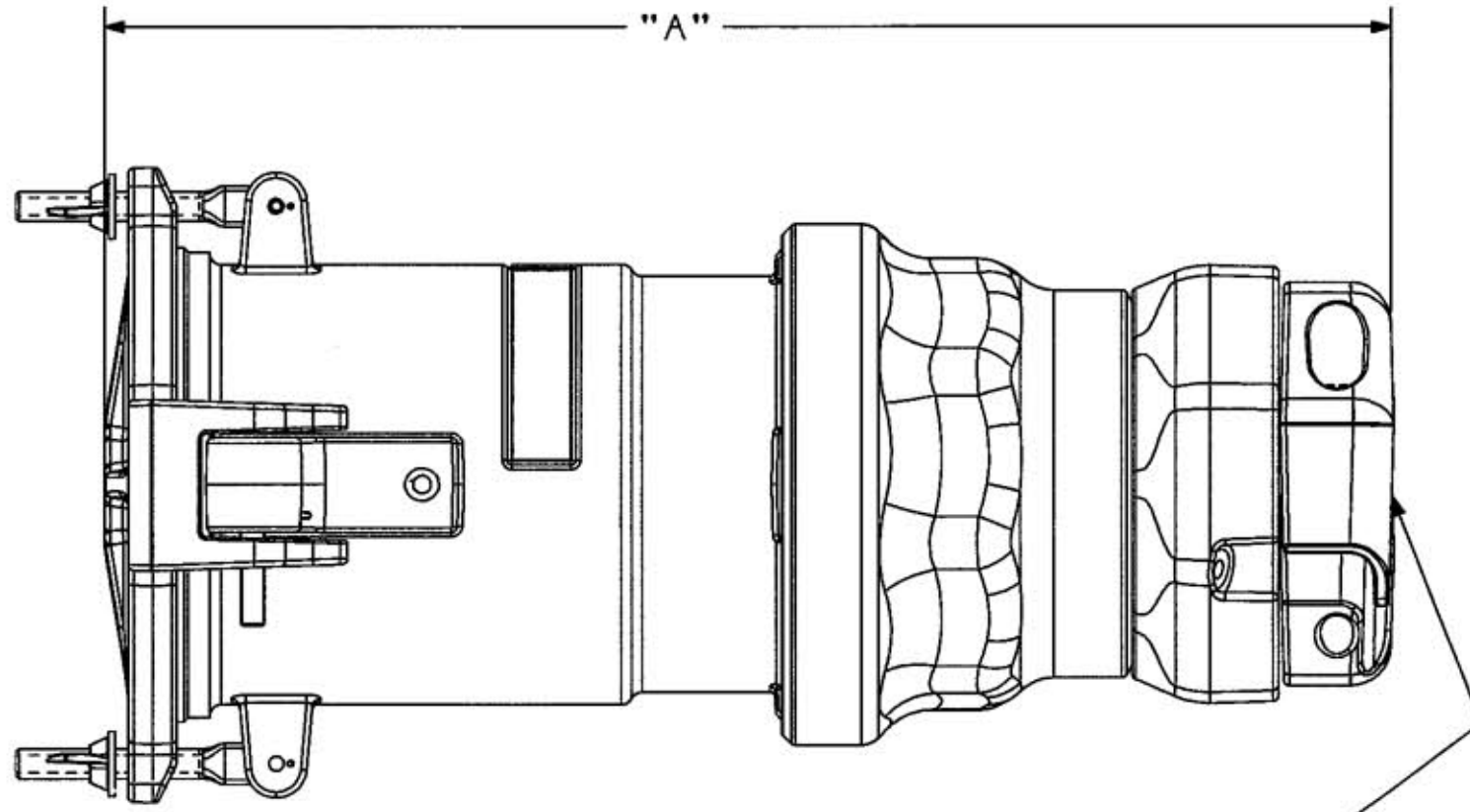
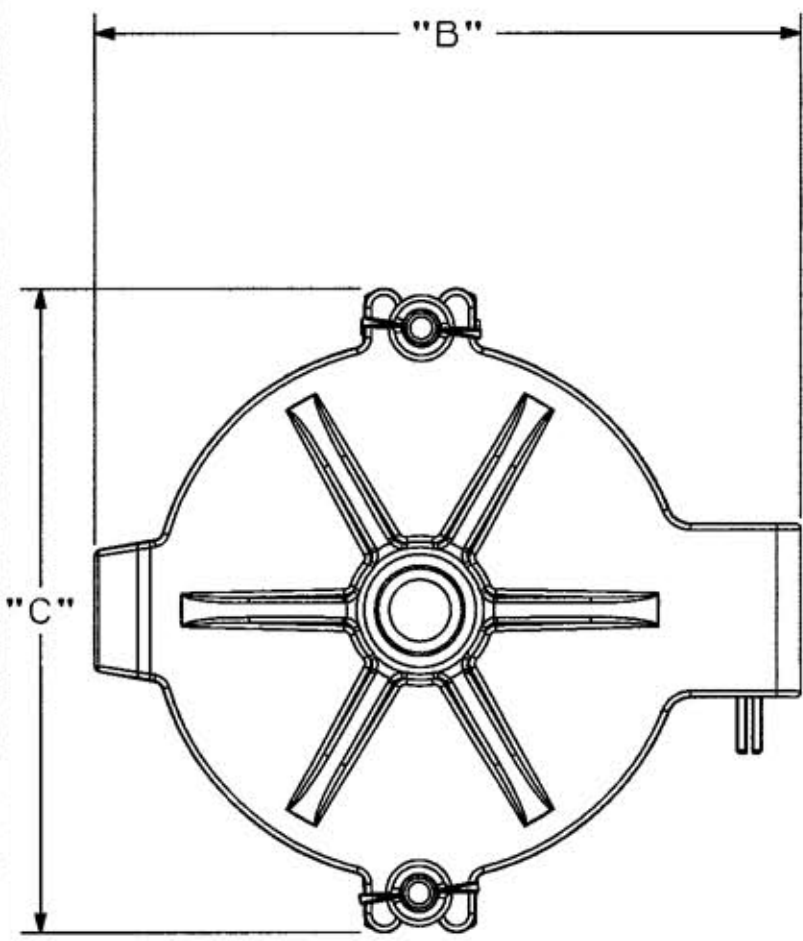


M-10832 1



CABLE DIA.
1.0 MIN
(25.4)

2.5 MAX
(63.5)

NOTES: (UNLESS OTHERWISE SPECIFIED)

1) DIMENSION FORMAT IS: INCHES
[mm]

TABLE

AMPS	MAX VOLTAGE AC/DC	CONNECTOR CATALOG NUMBER	PLUG			DIM "A"		DIM "B" Ø		DIM "C"	
			STYLE	POLE	WIRE	INS.	mm	INS.	mm	INS.	mm
200	600/250	M5200CS1	S1	4P	5W	13.65	346.7	7.39	187.7	6.70	170.2

LIST OF PARTS

DESCRIPTION	MATERIAL	FINISH
HINDGE BUSHING	ALUMINUM	
SPRING GUIDE	STAIN STEEL	
LID SPRING	STAIN STEEL	
LID	ALUMINUM	GRAY EPOXY
O-RING	RUBBER	
LID GASKET	RUBBER	
RIVET	ALUMINUM	
CONNECTOR	ALUMINUM	YELLOW EPOXY
SET SCREW	STAIN STEEL	
SCREWS	STAIN STEEL	
PIN SPRING	COPPER ALLOY	SILVER COATED
SPRING WASHER	COPPER ALLOY	
SLEEVES	COPPER ALLOY	NICKEL PLATED
SWING BOLT	STAIN STEEL	
BUTTERFLY NUT	STAIN STEEL	
GROUND POST	BRASS	
GROUND STRAP	COPPER ALLOY	
ONION SKIN GASKET	RUBBER	
CLAMP GUIDE	ALUMINUM	GRAY EPOXY
CLAMP	ALUMINUM	GRAY EPOXY
CLAMP INSERT	ALUMINUM	GRAY EPOXY
CONNECTOR ADAPTER	ALUMINUM	BLACK
INTERIOR	THERMOSET POLYESTER	

DIMENSION SHEET FOR CAT. NO. SEE TABLE

REPAIRABLE NON-REPAIRABLE

1	RELEASED PER DCN #14472 JMN	WUH WA	1/31/08
SYM	REVISIONS	APP	DATE

THE DESIGN AND DIMENSIONS OF THE
PRODUCT SHOWN ON THIS DRAWING ARE
SUBJECT TO CHANGE WITHOUT NOTICE

TITLE
200A MARINE INSULGRIP
PIN & SLEEVE CONNECTOR
STYLE 1

TOLERANCES UNLESS OTHERWISE SPECIFIED FRACTIONS ± 1/64 3 DECIMALS ± .005 ANGLES ± 2°	WIRING DEVICE-KELLEMS HUBBELL INCORPORATED BRIDGEPORT, CT	
	DR. BY JMN	APP. BY WUH
	TR. BY	SCALE 1:2
	CHK'D BY WUH	DATE 1/31/08

B M-10832 1