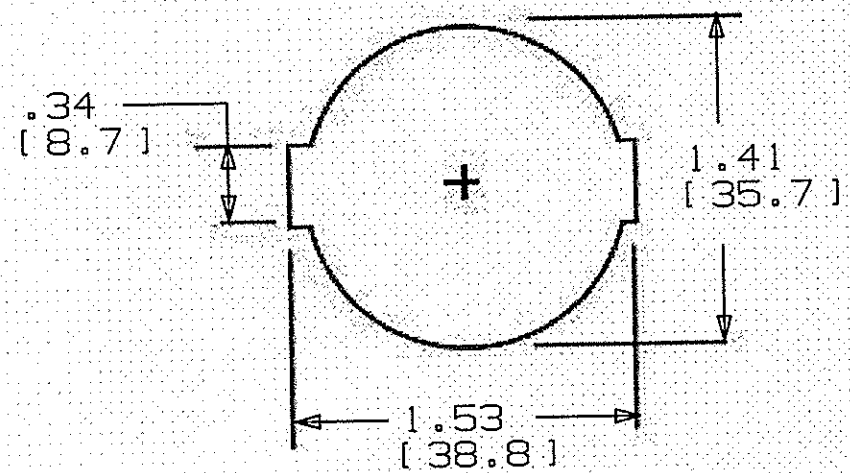
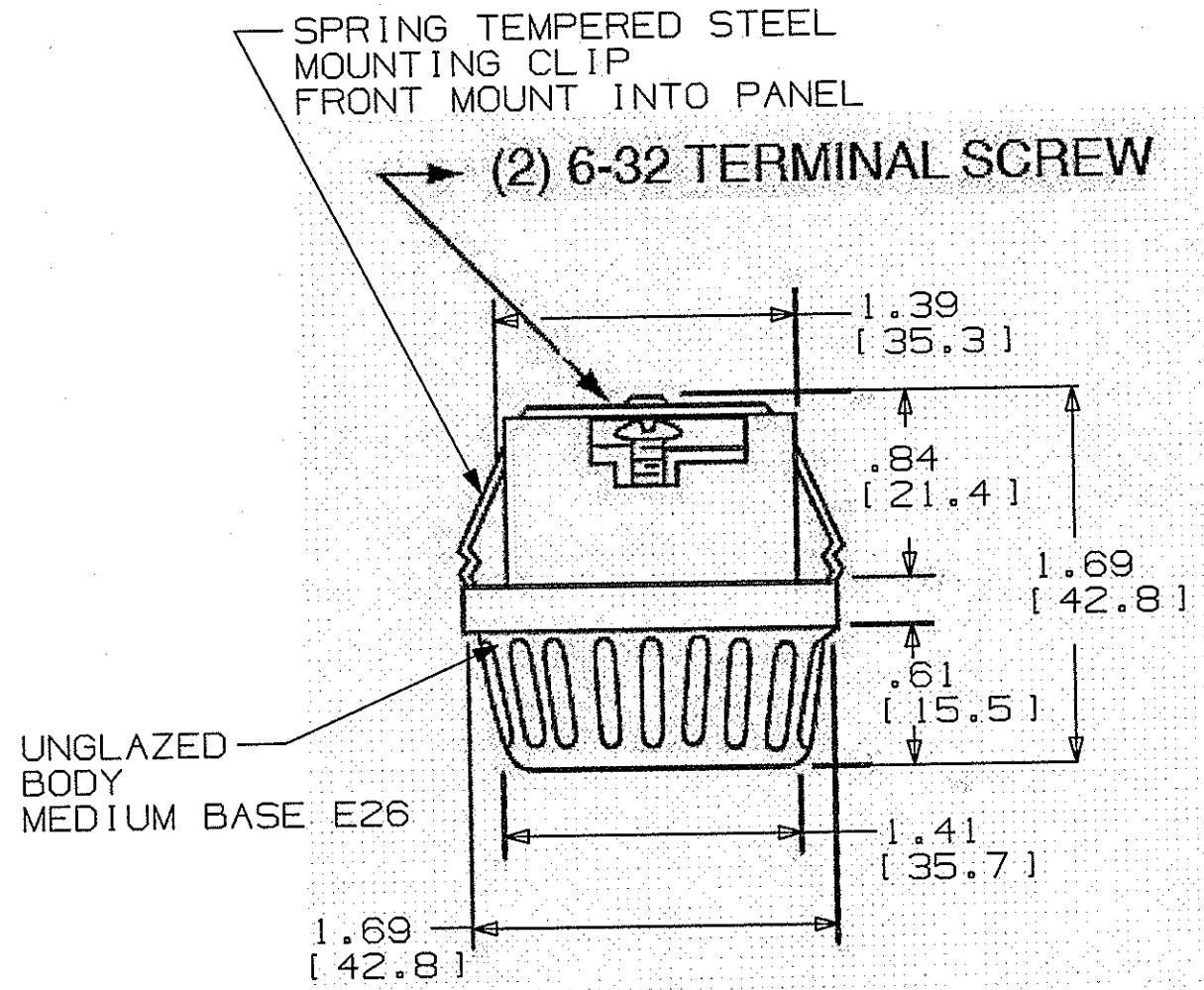


M11290 1



Panel Thickness 0.030-0.062 (0.76-1.57)  
Suggested Panel Opening

NOTES:

- DIMENSIONS ARE INCHES [mm].
- SCREW SHELL COMPLIES TO MEDIUM BASE LAMPHOLDER ANSI-C81.10 STD2-11-1 AND IEC E26.
- ACCOMMODATE .03 - .04 IN. [.76-1.0mm] PANEL THICKNESS.
- UL LISTED, CSA CERTIFIED. RATED 660W MAX., 250V MAX.
- PACKAGING: PRODUCT PLACED IN BOX.

LIST OF PARTS

DESCRIPTION	MATERIAL	FINISH
BODY	PORCELAIN	WHITE
SCREW SHELL	ALUM	

DIMENSION SHEET FOR CAT. NO.

RL159

REPAIRABLE

NON-REPAIRABLE

B

M11290

1

1	12/01/09 RELEASE TO PRODUCTION PER DCN 16198	CAC	CAC
SYM	REVISIONS	APP	DATE

THE DESIGN AND DIMENSIONS OF THE PRODUCT SHOWN ON THIS DRAWING ARE SUBJECT TO CHANGE WITHOUT NOTICE

TITLE INCANDESCENT SOCKET  
MEDIUM BASE  
FRONT MT SNAP

TOLERANCES UNLESS OTHERWISE SPECIFIED	WIRING DEVICE-KELLEMS HUBBELL INCORPORATED BRIDGEPORT, CT	
FRACTIONS ± 1/64	DR. BY DLI	APP. BY
DECIMALS ± .005	TR. BY	SCALE NONE
ANGLES ± 2°	CHK'D BY	DATE 04/01/09