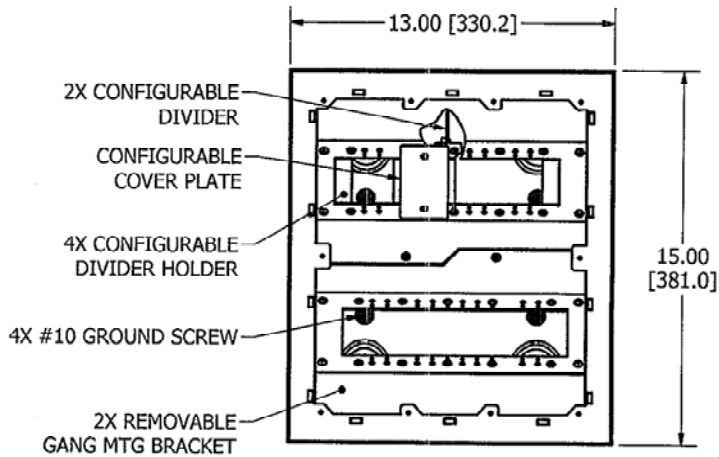
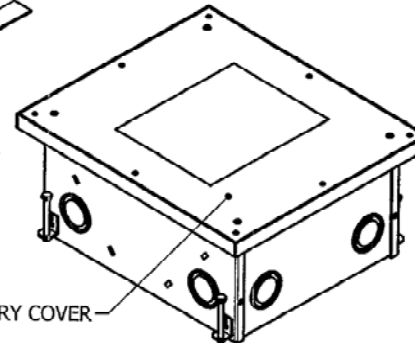
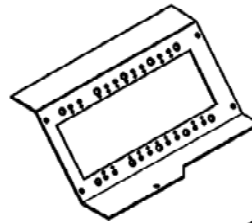


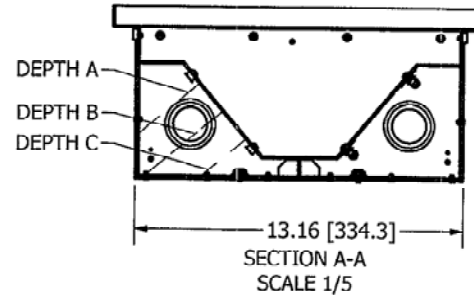
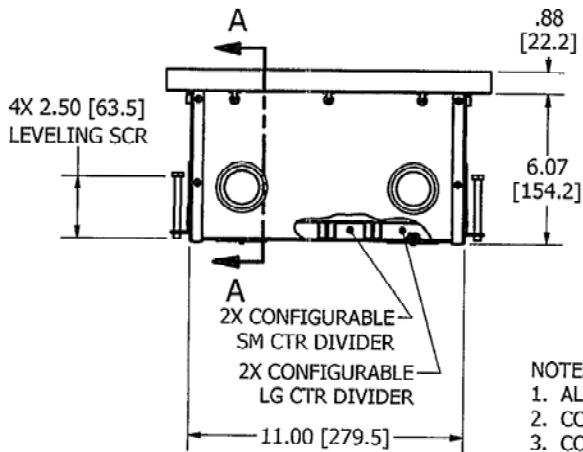
M-11563 3



TEMPORARY COVER NOT SHOWN



ISOMETRIC



NOTES:

- ALL DIMENSIONS ARE IN INCHES AND [MILLIMETERS].
- COMPLIES WITH UL 514A.
- COVER LOAD CAPACITY: 20,000 LB. WITH 2X SAFETY FACTOR
- 1", 1-1/4", 1-1/2" TRADE SIZE CONCENTRIC KNOCKOUTS: (4) BOTTOM, (2) PER SIDE
- WIRING VOLUMES PER CHAMBER:
 - 1 GANG & 3 GANG: 57 IN³ [934 CM³] & 122 IN³ [1999 CM³]
 - 2 GANG & 2 GANG: 86.5 IN³ [1417 CM³] & 92.5 IN³ [1516 CM³]
 - 3 GANG & 1 GANG: 116 IN³ [1901 CM³] & 63 IN³ [1032 CM³]
 - 4 GANG: 178 IN³ [2917 CM³]
- SUPPLIED WITH TEMPORARY COVER INSTALLED.
- USES STD COVER PLATES, SOLD SEPARATELY. MAX COVER PLATE HGT: 4.88 [123.8].
- COMPATIBLE WITH CFB8CVRALU1 AND CFB8JBC1 COVERS ONLY, SOLD SEPARATELY.
- SM CTR DIVIDER AREA: .76 IN² [4.9 CM²], LG CTR DIVIDER AREA: 2.16 IN² [13.9 CM²].

LOCATION	DEPTH BEHIND MTG BRACKET
A	3.13 [79.4]
B	4.01 [101.7]
C	2.27 [57.8]

CODE 74545

LIST OF PARTS		
DESCRIPTION	MATERIAL	FINISH
BOX ASSEMBLY	STEEL	ZINC
DIVIDERS	STEEL	ZINC
GANG MTG BRACKET	STEEL	ZINC
DIVIDER HOLDER	STEEL	ZINC
COVER PLATE	STEEL	ZINC
FASTENERS	STEEL	ZINC
TEMPORARY COVER	STEEL	ZINC

SYM	DESCRIPTION	APP	DATE
3	REVISED PER DCN18841	SBW	5/9/12
2	REVISED PER DCN18786	SBW	4/17/12
1	INITIAL RELEASE PER DCN18661	SBW	3/5/12

THE DESIGN AND DIMENSIONS OF THE PRODUCT SHOWN ON THIS DRAWING ARE SUBJECT TO CHANGE WITHOUT NOTICE

TITLE
HIGH COVER LOAD CAPACITY FLOOR BOX, 8 GANG CONFIGURABLE FOR RECESSED STYLE COVERS

TOLERANCES UNLESS OTHERWISE SPECIFIED	WIRING DEVICE-KELLEMS HUBBELL INCORPORATED SHELTON, CT.		
	DR. BY	SBW	APP. BY
.XX = ± .01 .XXX = ± .005 ANGLES = ± 2°	TR. BY	SCALE	1/5
	CHK'D BY SM	DATE	3/5/2012

DIMENSION SHEET FOR CAT. NO. CFB8FC1
 REPAIRABLE NON-REPAIRABLE
 B
 M-11563
 3