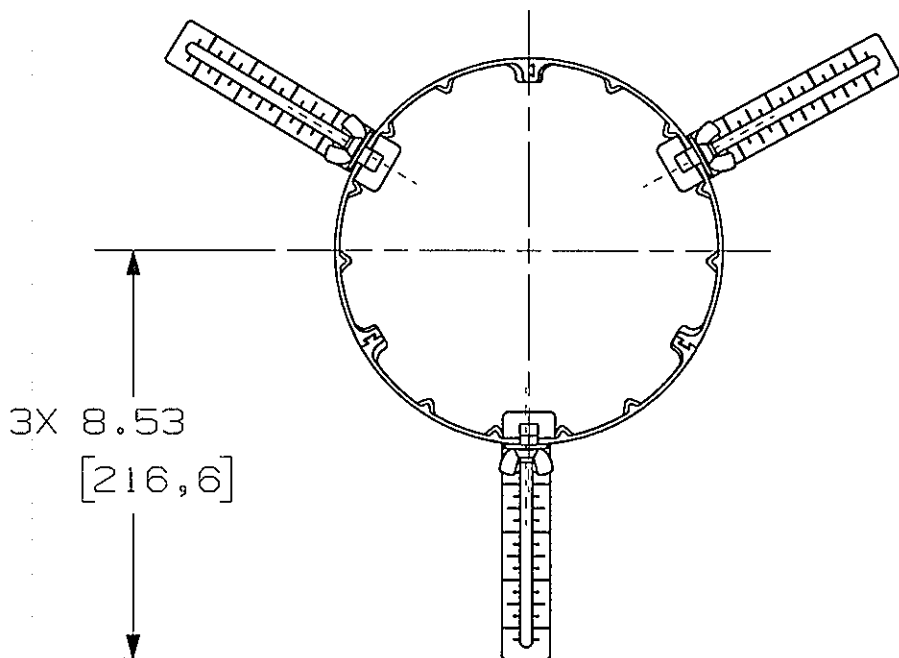
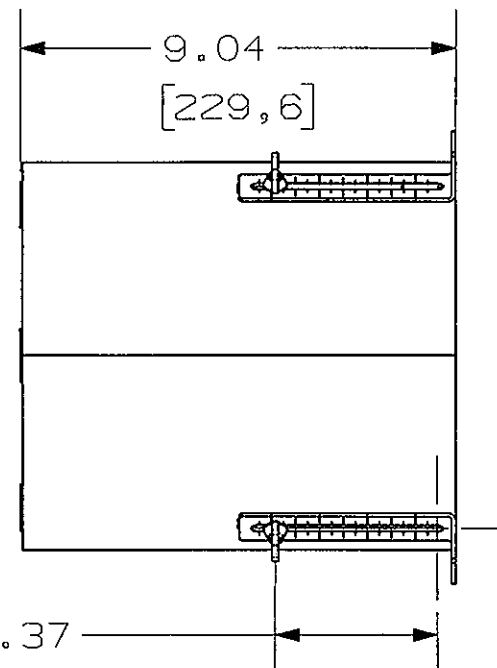
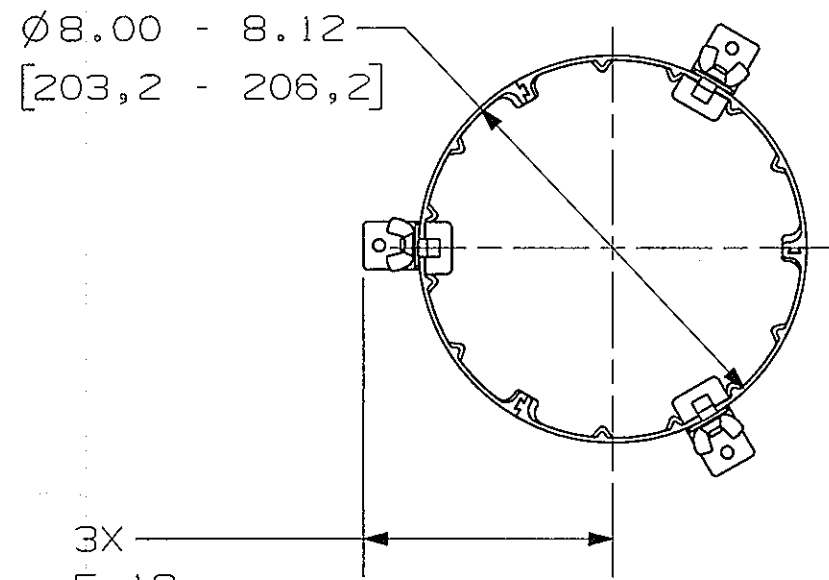


M-11988 3



ALTERNATE
ASSEMBLY
CONFIGURATION

NOTES:
1) ALL DIMENSIONS ARE IN INCHES AND (MILLIMETERS)

LIST OF PARTS

DESCRIPTION	MATERIAL	FINISH
POUR TUBE SEGMENTS	PVC	
INNER RINGS	STEEL	ZINC
BRACKETS	STEEL	ZINC
WING NUTS	STEEL	ZINC
HEX SCREWS	NYLON	

DIMENSION SHEET FOR CAT. NO. S1R8PPT

REPAIRABLE NON-REPAIRABLE

3	UPDATED IMAGES AND HEX SCREWS PER DCN20437 AD	AD	4/3/14
2	REMOVED CAPS, 9.04 WAS 9.15 HEX SCRS WERE THUMB SCRS ADDED EXPLOSION & ALT ASSY DCN18913 SRE		6/12/12
1	RELEASED PER DCN18435		1/3/12
SYM	REVISIONS	APP	DATE

THE DESIGN AND DIMENSIONS OF THE PRODUCT SHOWN ON THIS DRAWING ARE SUBJECT TO CHANGE WITHOUT NOTICE

TITLE
PRE-POUR TUBE
8 INCH FRPT

TOLERANCES UNLESS OTHERWISE SPECIFIED .XX : ±.01 .XXX : ±.005 ANGLES : ±2°	WIRING DEVICE-KELLEMS HUBBELL INCORPORATED SHELTON, CT	
	DR. BY SRE	APP. BY SM
	TR. BY	SCALE 1:2
	CHK. BY SM	DATE 1/3/12

B
M-11988
3