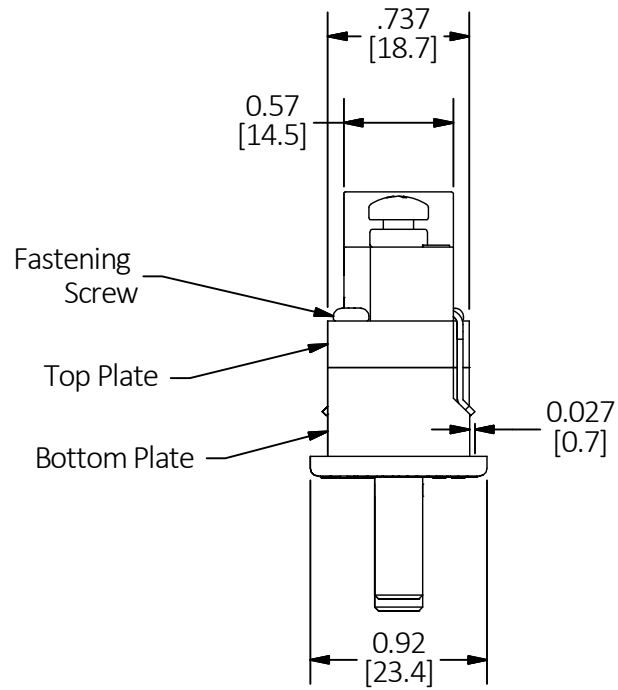
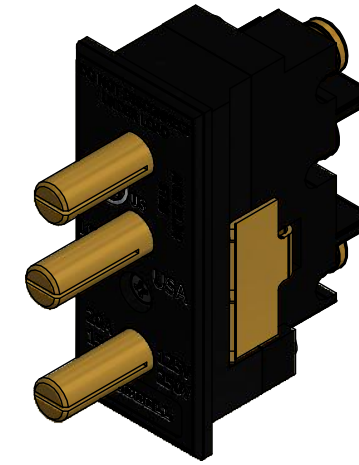


M-13658

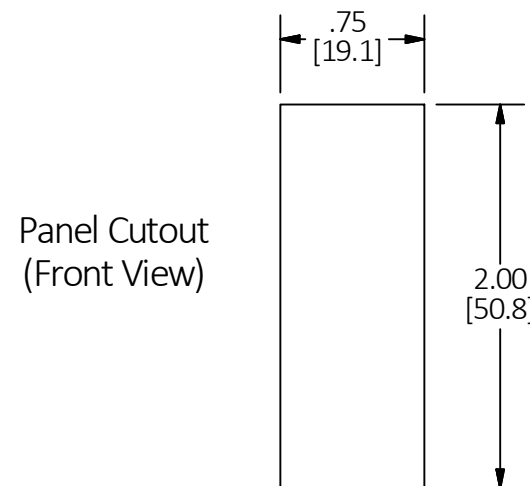
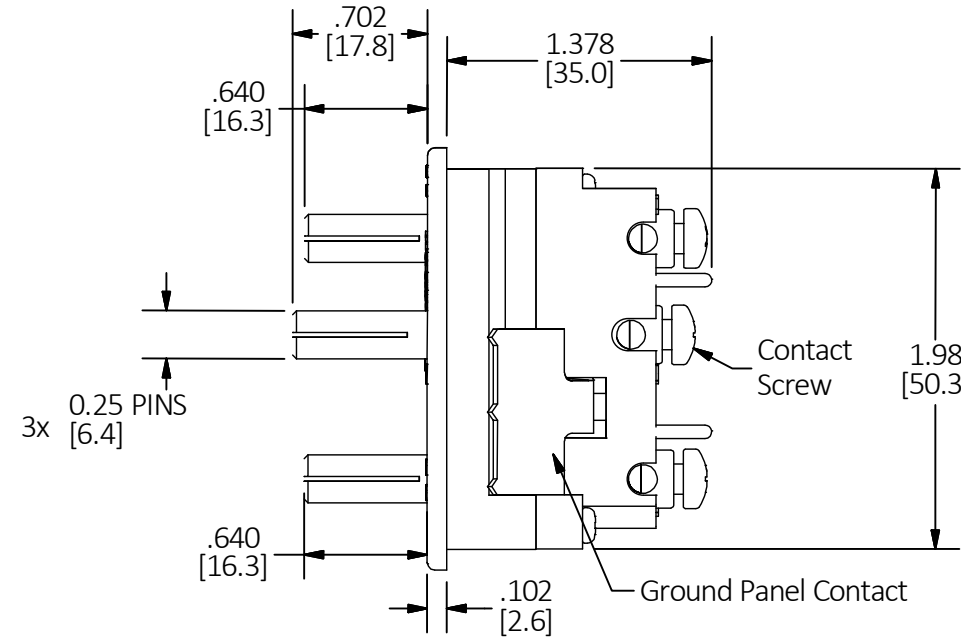
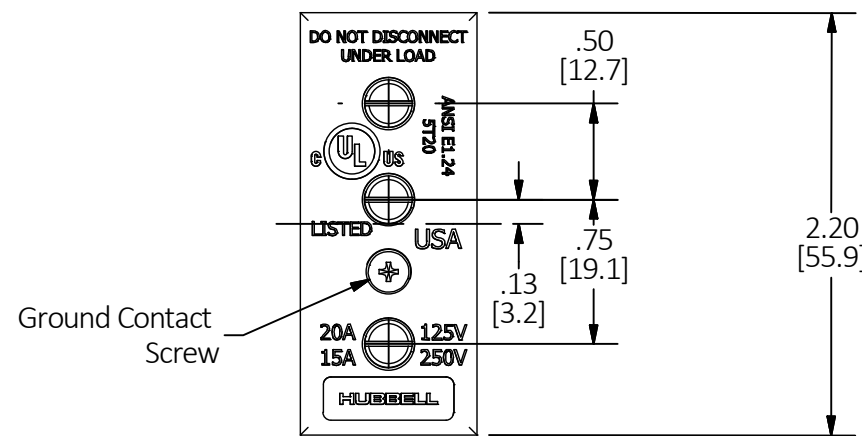
1



HUBBELL CAT. NO.	COLOR
HBL20SPMR	BLACK
HBL20SPMRW	WHITE
HBL20SPMRB	BLUE
HBL20SPMRRED	RED
HBL20SPMRY	YELLOW
HBL20SPMRO	ORANGE
HBL20SPMRC	CLEAR



Scale 1 : 1

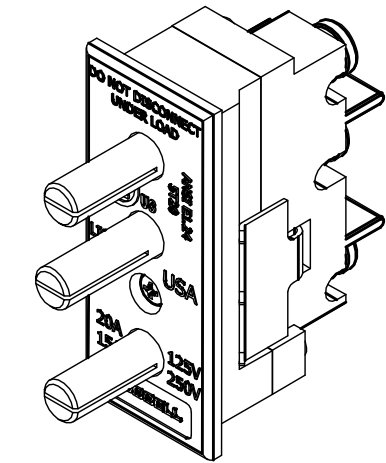


NOTES: UNLESS OTHERWISE SPECIFIED:

1. Dimensions are in inches [mm].
2. Rated 20A MAX at 125V and/or 15A MAX at 250V. Can be used in AC and DC applications.
3. Use with cat. nos. HBL20SPF, HBL20SPFW, HBL20SPFB, HBL20SPFRED, HBL20SPFY, HBL20SPFO, HBL20SPFC.
4. Push assembly rearward through cutout and tighten mounting screw to torque of 7 in-lbs.
5. Ground terminal not need to be wired separately ONLY IF mounted to a conductive panel. The Ground Panel Contact provides a conductive path between the ground pin and the panel.
6. Wire crimp (provided) may be crimped onto wire and tighten with contact screw at a torque of 12 in-lbs.

LIST OF PARTS

DESCRIPTION	MATERIAL	FINISH
Bottom Plate	Thermoplastic	See Table
Top Plate	Thermoplastic	See Table
Male Contact	Brass	Amber
Ground Panel Contact	Brass	Amber
Contact Screw	Brass	Amber
Fastening Screw	Steel	Silver
Ground Contact Screw	Steel	Black
Wire Crmp	Aluminum	Silver




CATALOG NO: HBL20SPMR (SCALE 1 : 1)

1	09-25-17 NEW RELEASE PER DCN 23355 CAC		
REV	DESCRIPTION	APP	DATE

THE DESIGN AND DIMENSIONS OF THE PRODUCT SHOWN ON THIS DRAWING ARE SUBJECT TO CHANGE WITHOUT NOTICE. DIMENSIONS ARE IN INCHES [mm].

TITLE  
20A Male Panel Mount Stage Pin

 WIRING DEVICE-KELLEMS HUBBELL INCORPORATED SHELTON, CT

TOLERANCES UNLESS OTHERWISE SPECIFIED .XX = ± .01 .XXX = ± .005 ANGLE TOL. ±2'	DR. BY A Di Vita	SCALE 1 : 1
	CHK. BY	DATE 6/12/2017

DIMENSION SHEET FOR CAT. NO. SEE TABLE

B

M-13658

1