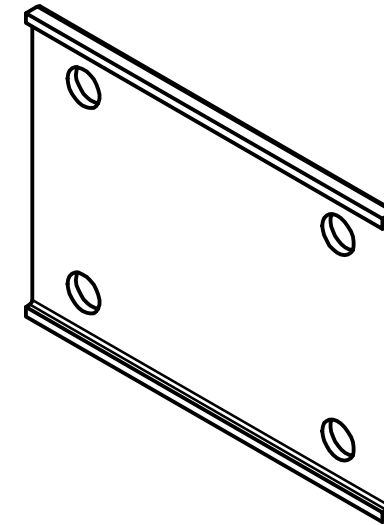
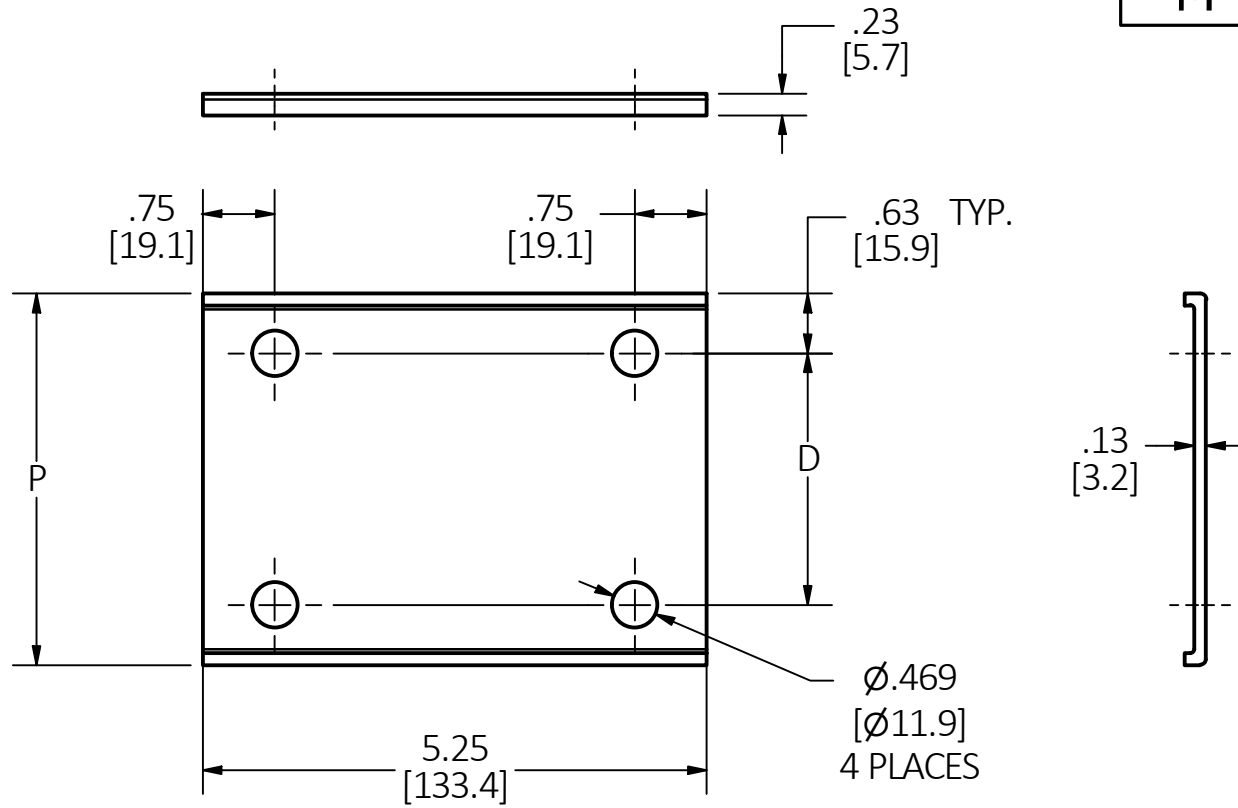


M-14459

1



CATALOG NUMBER	TRAY SIDE RAIL HEIGHT NOMINAL (in [mm])	TRAY SIDE RAIL HEIGHT ACTUAL (in [mm])	P (in [mm])	D (in [mm])
LCN4	4 [101.6]	4.25 [108.0]	3.87 [98.3]	2.62 [66.5]
LCN6	6 [152.4]	6.25 [158.8]	5.87 [149.1]	4.62 [117.3]

NOTES:

1. ALL DIMENSIONS ARE IN INCHES AND [MILLIMETERS].
2. PRODUCT IS cULus CLASSIFIED.
3. SUPPLIED WITH (2) SPLICE PLATES, FASTENERS: (8) Ø3/8" X 3/4" LONG SCREWS & (8) Ø3/8" FLANGED HEX NUTS.
4. INSTALL IN ACCORDANCE WITH NEMA STANDARD VE-2 "CABLE TRAY INSTALLATION GUIDELINES".

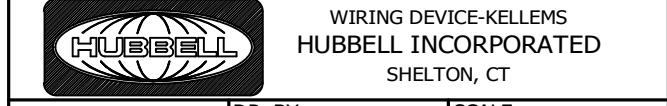
LIST OF PARTS

DESCRIPTION	MATERIAL	FINISH
SPLICE PLATE	ALUMINUM	
SCREWS	STEEL	GEOMET PLATED
NUTS	STEEL	GEOMET PLATED

1	RELEASED PER DCN211102014008	AD	11/2/21
REV	DESCRIPTION	APP	DATE

THE DESIGN AND DIMENSIONS OF THE PRODUCT SHOWN ON THIS DRAWING ARE SUBJECT TO CHANGE WITHOUT NOTICE. DIMENSIONS ARE IN INCHES [mm].

TITLE  
STRAIGHT SPLICE PLATE CONNECTORS,  
LADDER TRAY



TOLERANCES UNLESS OTHERWISE SPECIFIED .XX = ± .01 .XXX = ± .005 ANGLE TOL. ±2'	DR. BY AD	SCALE 1/2
	CHK. BY SBW	DATE 10/13/21

DIMENSION SHEET FOR CAT. NO. SEE TABLE

B

M-14459

1