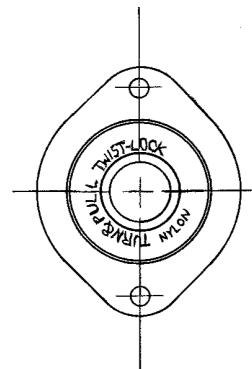
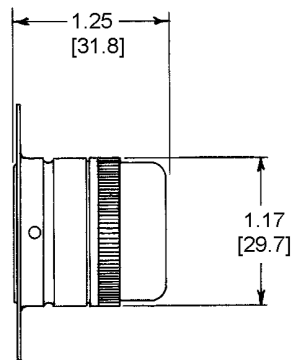
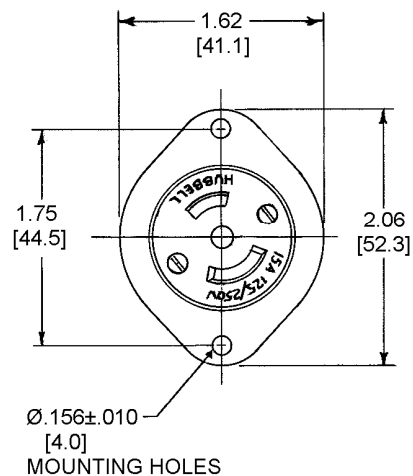


M-2299

6



## NOTES:

1. WIRE CAPACITY #18-#14 AWG, SOLID OR STRANDED COPPER WIRE ONLY.
2. ALL DIMENSIONS IN INCHES.  
[mm]

CODE 74545

## TITLE

15A 125/250V 3 WIRE  
MIDGET TWIST-LOCK  
FLANGED RECEPTACLE  
NEMA ML-3R

## LIST OF PARTS

DESCRIPTION	MATERIAL	FINISH
BODY	POLYESTER	BLACK
CONTACT SPR. BIND. PL.	.031 BRONZE	
CENTER CONTACT	BRASS	
BINDING SCREWS	BRASS	
INSULATING BARRIER	NYLON	BLACK
CUPPED WASHER	BRASS	
INSULATOR	NYLON	NATURAL
CASING	STAIN. STEEL	
NEUTRAL BIND. SCREW	BRASS	NICKEL PL.
BASE	NYLON	

6	PARTS LIST: BODY MATERIAL POLYESTER WAS PHENOLIC PER DCN 22625 RM	DJP	10/2/17
5	REDRAWN ON NEW FORMAT, WAS "A" SIZE; CASING: STAIN. STEEL WAS BRASS; CONVERTED DIMS FROM FRACTION TO DECIMAL; ADDED NOTES 1 & 2 PER DCN 16134 RCM	DJP	11/19/09

SYM	REVISIONS	APP	DATE
-----	-----------	-----	------

SUPERSEDES DWG DATED 8/20/43

TOLERANCES UNLESS OTHERWISE SPECIFIED	HARVEY HUBBELL, INC.	
FRACTIONS $\pm 1/64$	DR. BY <u>AJZ</u>	APP. BY
DECIMALS $\pm .005$	TR. BY <u>RCM</u>	SCALE <u>FULL</u>
ANGLES $\pm 2^\circ$	CHK'D. BY	DATE <u>11/19/09</u>

DIMENSION SHEET FOR CAT. NO.

HBL7489

REPAIRABLE ☐ NON-REPAIRABLE ☒

B

M-2299

6