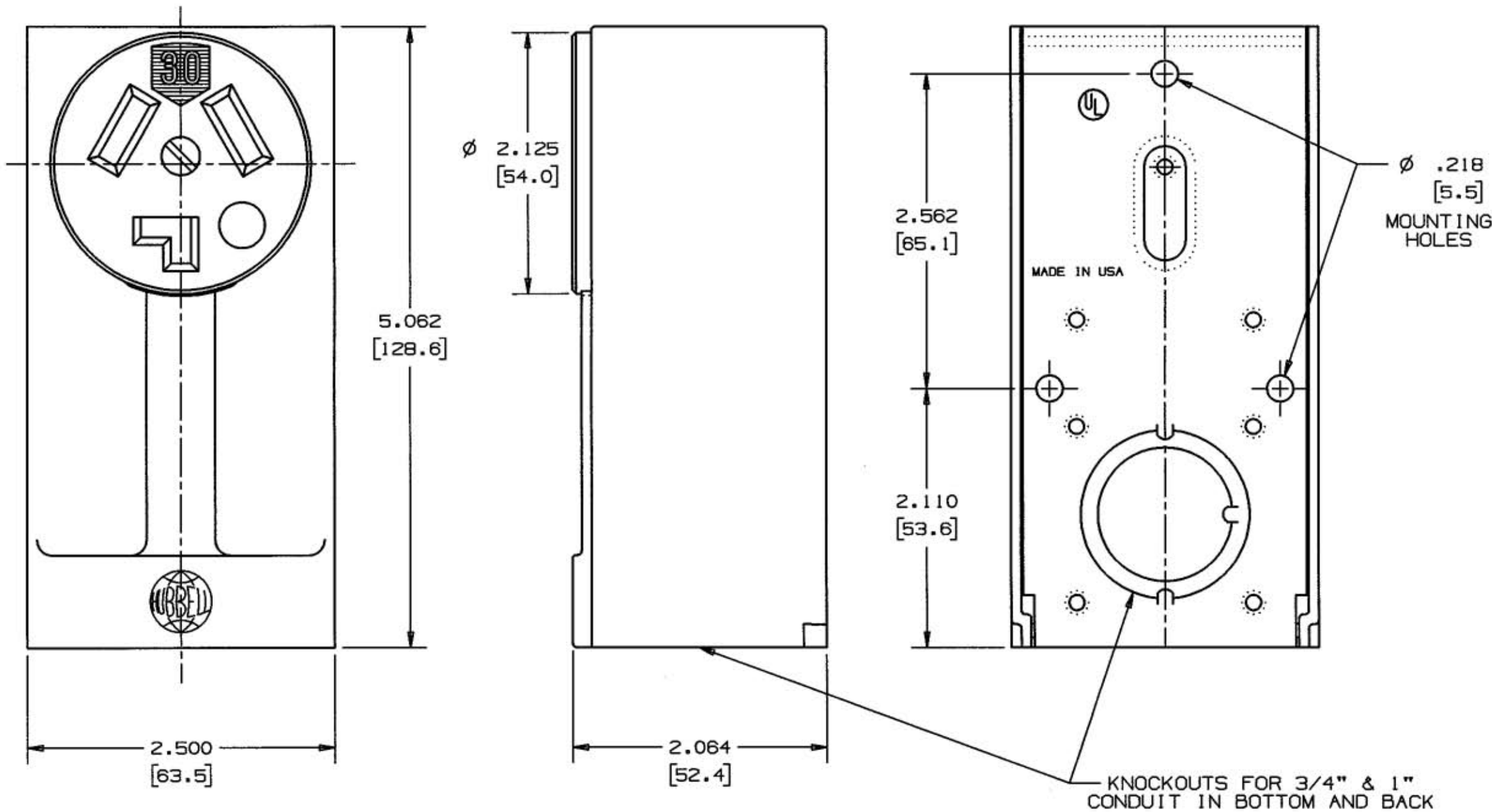


M-3294 2



NOTES: (UNLESS OTHERWISE SPECIFIED)

- 1) DIMENSION FORMAT IS: INCHES [mm]
- 2) DIMENSIONS SHOWN ON THIS DRAWING ARE NOMINAL VALUES FOR GENERAL USE ONLY. ACTUAL PART TOLERANCES MUST BE OBTAINED FROM HUBBELL ENGINEERING.

LIST OF PARTS

DESCRIPTION	MATERIAL	FINISH
RECEPTACLE COVER	BAKELITE	
COVER	.081 ALUMINUM	TUMBLASTED
BASE	.081 ALUMINUM	
CONTACT SPRINGS	.040 BRONZE	
BINDING PLATES	.075 BRASS	
CORD CLAMP	C.R.S.	ZINC PLATE
CORD CLAMP SCREWS	C.R.S.	ZINC PLATE
10-32 X 11/32 BIND. SCRS.		

SUPERSEDES DRAWING DATED 8-16-57

1	REDRAWN ON CAD ON UPDATED FORMAT WITH CHANGES. ADDED DUAL DIMENSIONS, NOTES 1 & 2, AND "NEMA 10-30R"; REMOVED $\pm 1/32$ FROM DIM.'S; 2 PLACE DECIMAL DIMENSIONS WERE FRACTIONAL; REMOVED "MOLDED BAKELITE" AND "PAT. APPL'D FOR"; DRAWING TITLE WAS "DIMENSION SHEET FOR CAT. NO. 9395"; PER DCN #8674. JMN	TCM	7/26/01
---	---	-----	---------

SYM	REVISIONS	APP	DATE
-----	-----------	-----	------

THE DESIGN AND DIMENSIONS OF THE PRODUCT SHOWN ON THIS DRAWING ARE SUBJECT TO CHANGE WITHOUT NOTICE

TITLE
SURFACE MOUNTED RECEPTACLE
NEMA 10-30R

WIRING DEVICE-KELLEMS HUBBELL INCORPORATED BRIDGEPORT, CT	
DR. BY JMN	APP. BY JNO
TR. BY	SCALE 1:1
CHK'D BY TCM	DATE 7/26/01