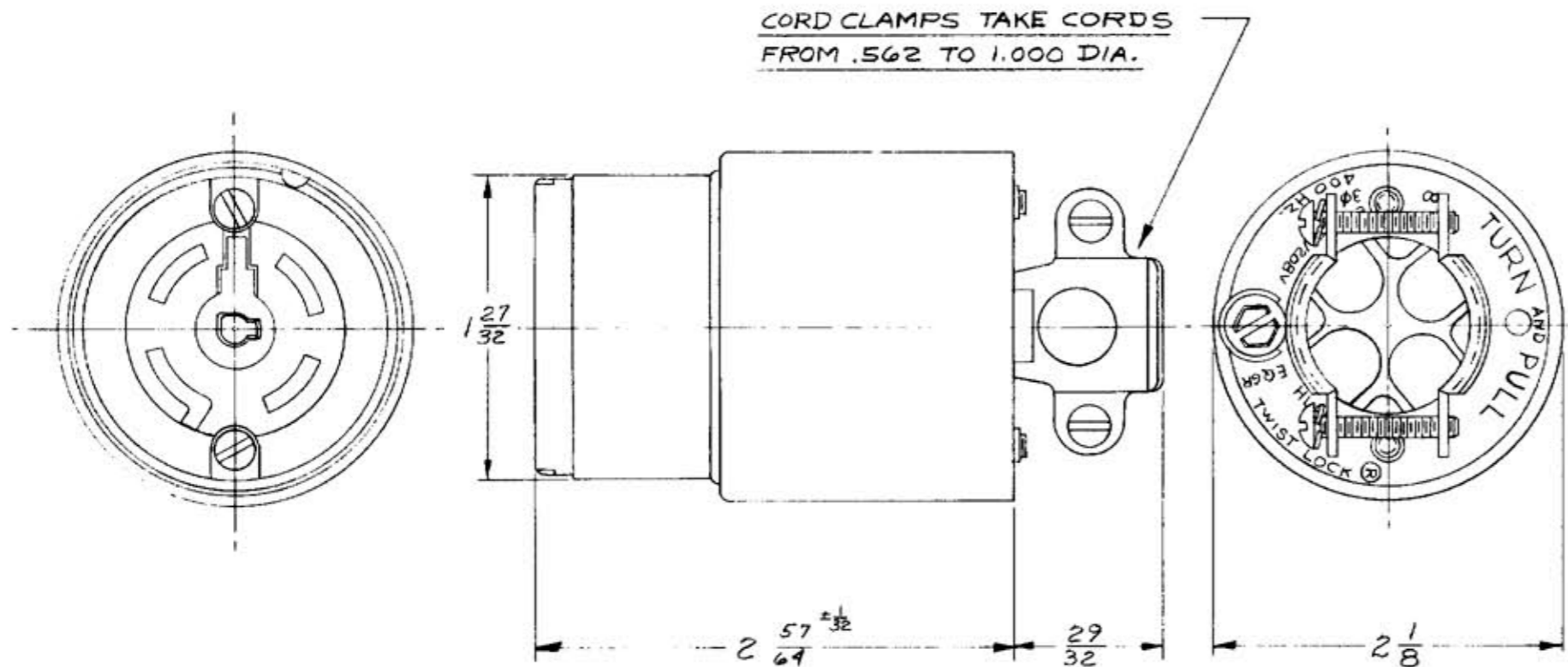


M-5763



LIST OF PARTS

DESCRIPTION	MATERIAL	FINISH
COVER	NYLON	BLACK
RETAINING SHELL	NYLON	BLACK
TOP PLATE	.040 STEEL	ZINC PL.
CUPPED WASHER	.031 BRASS	
BINDING SCR.	BRASS	1-WHITE
BODY	BAKELITE	BLACK
INSERT	NYLON	NATURAL
4-TERMINALS	.131 BRASS	
4-WIRE CLAMPS	.062 STEEL	ZINC PL.
INSIDE CONT. SPRING	.090 BRONZE	
OUTSIDE CONT. SPRING	.090 BRONZE	
GR. SPRING	.012 BRONZE	
CORD CLAMP	.062 STEEL	ZINC PL.
HOLDING SCREWS	BRASS	
HEX. HD. GR. SCR.	BRASS	GREEN

DIMENSION SHEET FOR CAT. NO. 45935

REPAIRABLE  NON-REPAIRABLE

SYM	REVISIONS	APP	DATE

B M-5763

**TITLE**  
4 POLE, 5 WIRE, 20 AMP, 120/208 V 3φ Y  
400 HZ "TWIST-LOCK" CONNECTOR BODY

TOLERANCES UNLESS OTHERWISE SPECIFIED  
 FRACTIONS ± 1/64  
 DECIMALS ± .005  
 ANGLES ± 2°

**HARVEY HUBBELL, INC.**  
 BRIDGEPORT, CONN.

DR. BY KE APP. BY \_\_\_\_\_  
 TR. BY \_\_\_\_\_ SCALE FULL  
 CHK'D. BY \_\_\_\_\_ DATE 12-26-73

CODE 74545