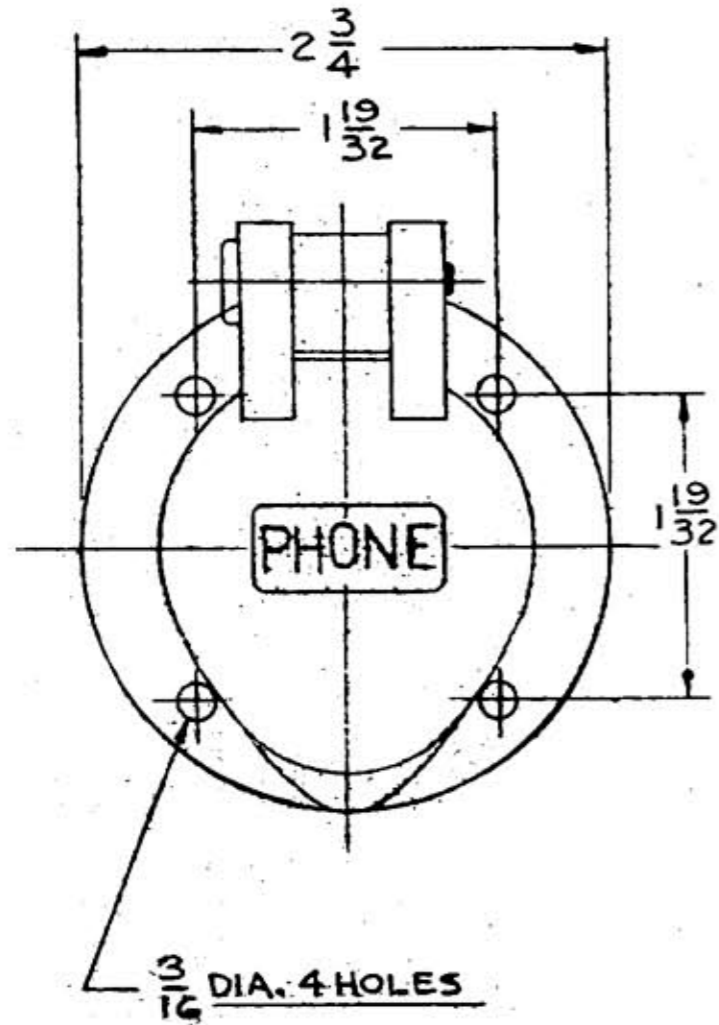
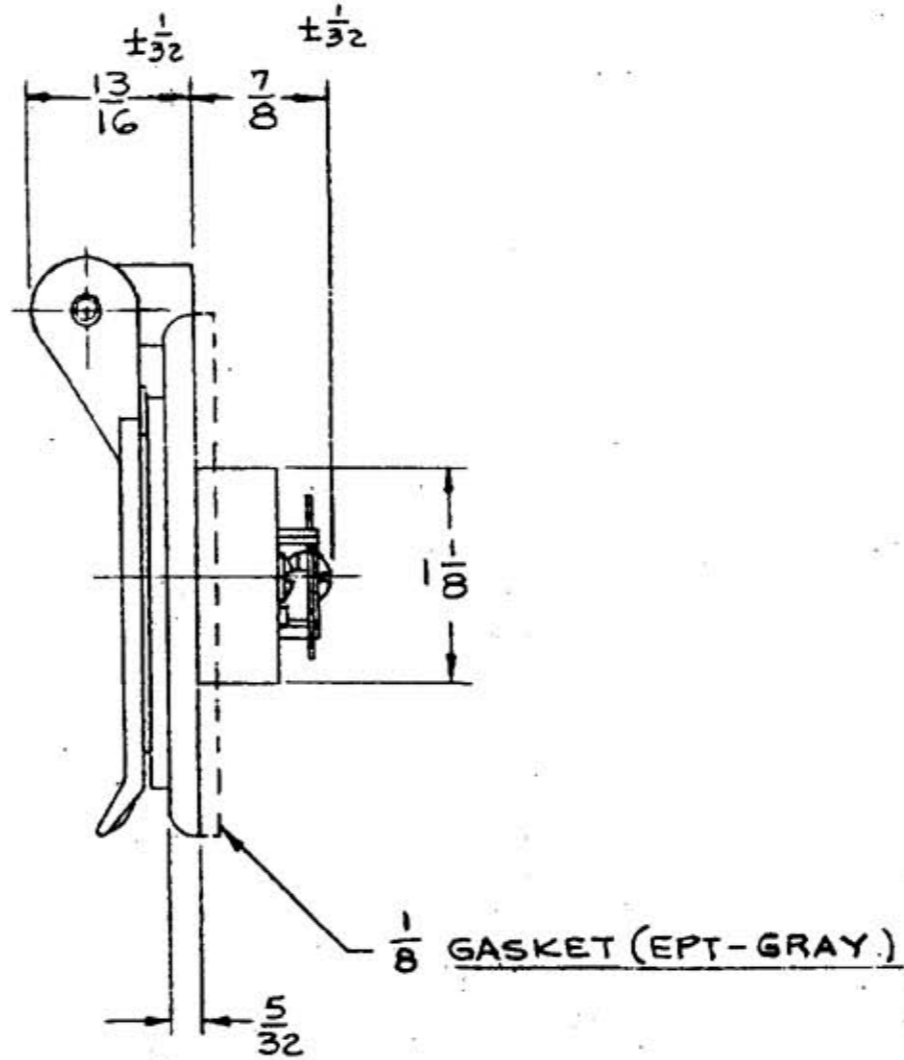


M-5845 | 1



(SUPPLIED WITH 4-#8-32 ROUND HEAD.
BRASS NICKEL PLATE 7/16 LONG
MOUNTING SCREWS)



LIST OF PARTS

DESCRIPTION	MATERIAL	FINISH
PLATE	POLYCARBONATE	BLACK
FLAP		BLACK
HINGE PIN	BRASS	NICKEL PL.
GASKET	EPT	GRAY
SPRING	ST. STEEL	
BARRIER	NYLON	BLACK
CONSP. BIND. PL.	.031 BRONZE	NICKEL PL.
CUPPED WASHER	.025 BRASS	NICKEL PL.
BINDING SCREWS	BRASS	NICKEL PL.
INSULATOR	.031 NYLON	
CENTER CONTACT	BRASS	NICKEL PL.

1	PLATE & FLAP MATL. WAS GLASS FILLED. GASKET WAS 3/32 - BLACK ESN	12-8-89
---	--	---------

SYM	REVISIONS	APP	DATE
-----	-----------	-----	------

TITLE CAT. PH 6596
3 WIRE TWIST-LOCK
TELEPHONE OUTLET

TOLERANCES UNLESS OTHERWISE SPECIFIED
FRACTIONS ± 1/64
DECIMALS ± .005
ANGLES ± 2°

HARVEY HUBBELL, INC.
BRIDGEPORT, CONN.
DR. BY C. J. G. APP. BY
TR. BY SCALE FULL
ORD. BY ESN DATE 5-20-75