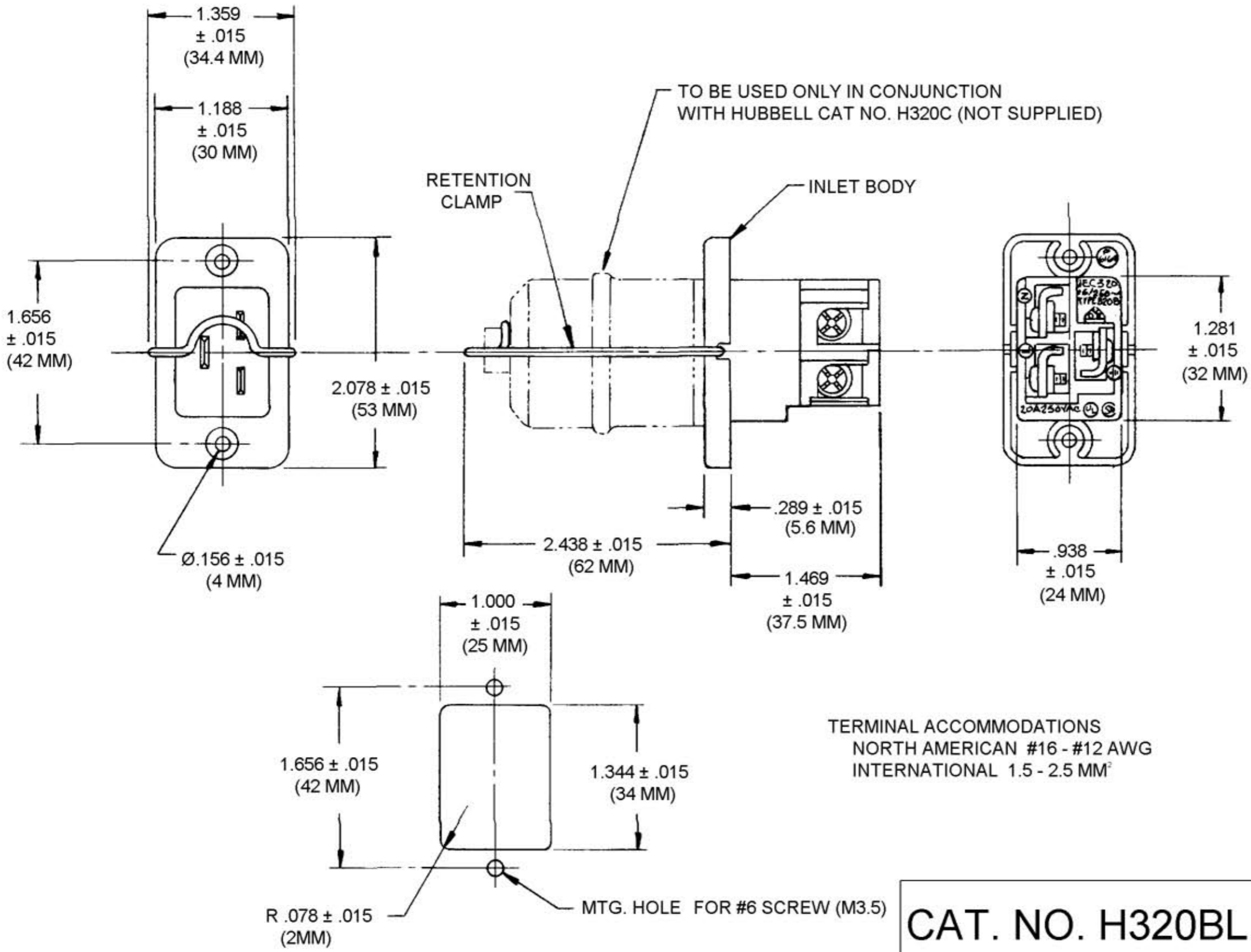


M-6817 2



TERMINAL ACCOMMODATIONS
 NORTH AMERICAN #16 - #12 AWG
 INTERNATIONAL 1.5 - 2.5 MM²

CAT. NO. H320BL

RECOMMENDED PANEL CUTOUT

TITLE
 20/16A 250VAC THREE WIRE
 IEC STRAIGHT BLADE
 INLET WITH RETENTION CLAMP

LIST OF PARTS

DESCRIPTION	MATERIAL	FINISH
INLET BODY	POLYESTER	BLACK
POWER BLADE	BRASS	
GROUND BLADE	BRASS	
WIRE BIND CLAMP	STEEL	Ni. PLATE
BINDING SCREW	SST	BLACK
GROUND SCREW	SST	GREEN
RETENTION CLAMP	SST	PASSIVATE

2	CONVERTED ALL DIMS TO 3 PL DECIMAL & TOL ADDED, VIEW REVD TO SHOW TRI-DRIVE SCREWS PER DCN #7773 AMZ	DB	7-11-00
1	ADDED VDE SYM 19/32 WAS 19/32	CSC	12-4-91 JG
SYM	REVISIONS	APP	DATE

THE DESIGN AND DIMENSIONS OF THE PRODUCT SHOWN ON THIS DRAWING ARE SUBJECT TO CHANGE WITHOUT NOTICE.

TOLERANCES UNLESS OTHERWISE SPECIFIED	WIRING DEVICE DIVISION HARVEY HUBBELL, INC. BRIDGEPORT, CONN.	
FRACTIONS ± 1/64	DR. BY <u>SANDOR</u>	APP. BY
DECIMALS ± .005	TR. BY	SCALE 1:1
ANGLES ± 2°	CHK'D. BY	DATE 9-11-89

DIMENSION SHEET FOR CAT. NO. H 320 BL
 REPAIRABLE NON-REPAIRABLE
 B
 M-6817
 2