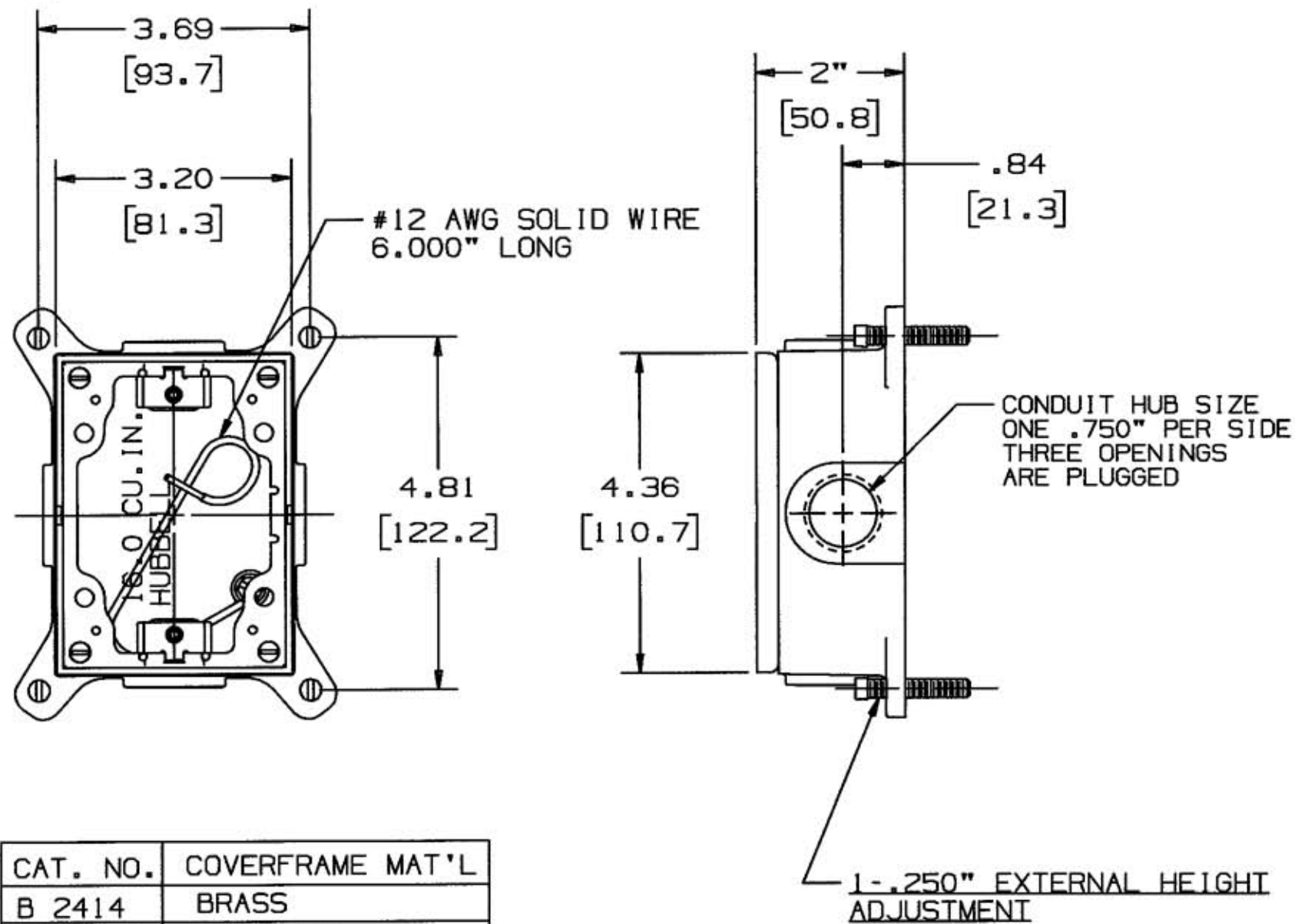


M-7530 4



CAT. NO.	COVERFRAME MAT'L
B 2414	BRASS
BA-2414	ALUMINUM

NOTE: 1. INCHES [mm]  
 2. PROTECTIVE CAP NOT SHOWN

LIST OF PARTS

DESCRIPTION	MATERIAL	FINISH
FLOOR BOX	CAST IRON	GRAY
COVERFRAME	SEE TABLE	
PROTECTIVE CAP	STEEL	TIN PL.
CLOSURE PLUGS	STEEL	TIN PL.
ADJUSTING SCREWS	STEEL	ZINC PL.
GROUND SCREW	STEEL	GREEN
GROUND WIRE	COPPER	GREEN/INS.
SCREW FLT HD 6-32	STEEL	ZINC PL.

SUPERSEDES DWG DATED 6/21/76

SYM	REVISIONS	APP	DATE
4	2/19/04 REACTIVATED BA-2414 COVERFRAME MAT'L WAS BRASS PER DCN 11545 RCM	JPP	2/19/04
3	11/02/01 ADDED METERIC EQUIVALENTS TO ALL DIMS. ADDED "RECT. CAST IRON" TO TITLE. DISCONTINUED BA-2414. COVER FRAME MATERIAL WAS "SEE TABLE". ADDED NOTE #12 AWG SOLID WIRE.. PER DCN 8696 SPN	TCM	2/6/02
2	10/29/99 REDRAWN ON CAD PER DCN 7030 CAC	ML	11-3-99

THE DESIGN AND DIMENSIONS OF THE PRODUCT SHOWN ON THIS DRAWING ARE SUBJECT TO CHANGE WITHOUT NOTICE

TITLE RECTANGULAR CAST IRON FLOOR BOX SEMI-ADJUSTABLE 1 GANG (SHALLOW)

TOLERANCES UNLESS OTHERWISE SPECIFIED  
 FRACTIONS ± 1/64  
 DECIMALS ± .005  
 ANGLES ± 2°

WIRING DEVICE-KELLEMS HUBBELL INCORPORATED BRIDGEPORT, CT

DR. BY CJG APP. BY JNC  
 TR. BY CAC SCALE 1/2  
 CHK'D BY DATE 10/29/99

DIMENSION SHEET FOR CAT. NO. B2414

REPAIRABLE  NON-REPAIRABLE

B

M-7530

4