

BURNDY CATALOG #	CONDUCTOR SIZE	FIG. NO.	O.D. REF.	E REF.	B REF.	C REF.	H REF.	K REF.	L MAX	N REF.	T REF.	D MIN.	DIE CAT #	INSTL TOOLING	# OF CRIMPS	INDEX EMBOSSEMENT	WIRE STRIP LENGTH
YA26-NT38-6TLD	2/0 AWG	1	.93 [24]	±.03	1.51 [38]	.94 [27]	- [38]	.40 [10]	3.62 [92]	.50 [31]	.19 [51]	1.01 [26]	U1214	Y35	1	1214	1 1/8
YA28-NT516-6TLD	4/0 AWG	1	1.06 [27]	-	1.51 [38]	.94 [27]	- [38]	.33 [8]	3.62 [92]	.50 [31]	.19 [51]	1.20 [30]	U1216	Y750	1	1216	1 1/8
YA28-2TC38-6TLD	4/0 AWG	3	1.06 [27]	1.00 [25]	1.51 [38]	1.00 [25]	- [38]	.40 [10]	4.62 [117]	.50 [31]	.19 [51]	2.20 [56]	U1216	Y46	1	1216	1 1/8
YA28-NT38-6TLD	4/0 AWG	1	1.06 [27]	-	1.51 [38]	.94 [27]	- [38]	.40 [10]	3.62 [92]	.50 [31]	.19 [51]	1.20 [30]	U1216		1	1216	1 1/8

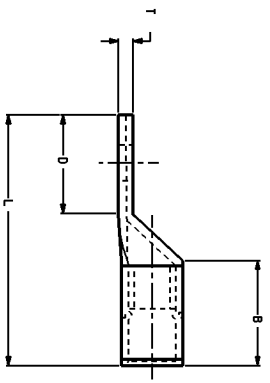
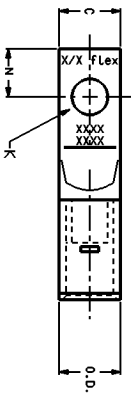


FIG. 1

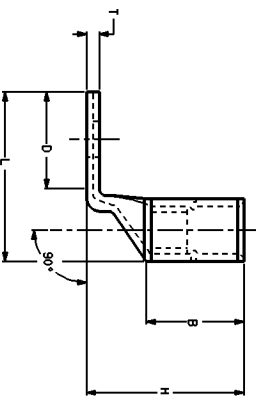
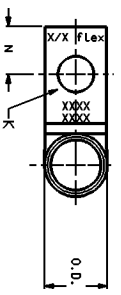


FIG. 2

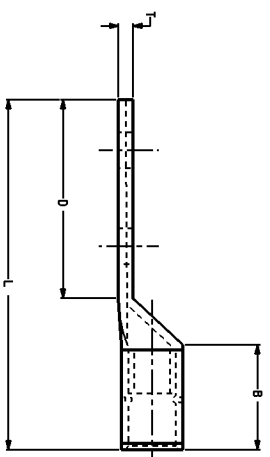
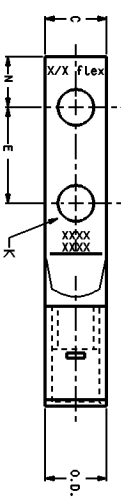


FIG. 3

NOTES:

1. BARREL MARKINGS FOR EACH CONDUCTOR INCLUDE THE DIE INDEX NUMBER, DIE CATALOG NUMBER AND THE STRIP LENGTH.
2. USE P-UADP-1 ADAPTER WITH U-DIES IN THE Y46.
3. DOUBLE INDENT DIE MAKES ELECTRICAL CONNECTION AND AIR TIGHT SEAL IN ONE CRIMP.
4. MATERIAL: COPPER
5. FINISH: LEAD PLATING
6. DIMENSIONS IN BRACKETS [] ARE IN MILLIMETERS ROUNDED OFF TO THE NEAREST MILLIMETER UNLESS OTHERWISE NOTED AND ARE FOR REFERENCE ONLY

LEAD PLATED BATTERY HYLUG

BURNDY on FCI Company
 U.S. ELECTRICAL DIVISION
 HAMMESTER, NM 03108
 WSD209065
 SHEET 1 OF 1