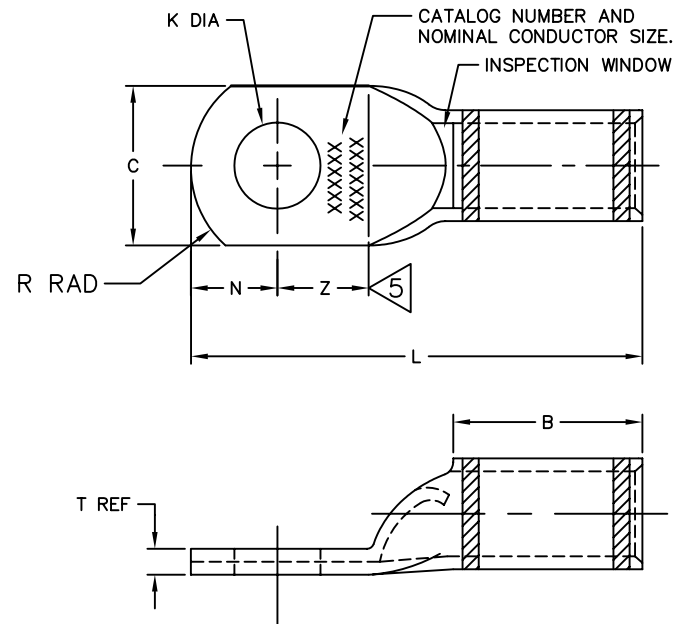


REV.	DATE	DESCRIPTION	ECO	BY	C'K'D.
B	4/11/08	REVERSE TUBE REDUCTION CHNG	15552	PL	PL

CATALOG NUMBER	CONDUCTOR (COPPER)		METRIC BOLT SIZE [mm]	DIMENSIONS ∇										BURNDY INSTALLATION TOOLING (# CRIMPS EA. END)					
	FLEX (STR) (Kcmil)	CODE (AWG)		O.D	I.D	B	C	K	L	N	R	T	Z	COLOR CODE	MECHANICAL RATCHET Y2MR	DIE TYPE	HYDRALIC		WIRE STRIP LENGTH
				\pm .02	\pm .01	\pm .06	\pm .06	\pm .01	\pm .12	\pm .06	\pm .04	REF	MIN				Y750 Y35 Y39	Y46 \triangleleft 4	
YAV28L-TC12FXG1	4/0 133/.0399 259/.0286	4/0 19/.1055	12	.77 [20]	.63 [16]	1.03 [26]	1.14 [29]	.53 [13]	2.77 [70]	.53 [13]	.75 [19]	.15 [4]	.65 [17]	----	----	NEST INDENTOR	UV28L (1) Y34PA	UV28L (1) Y34PA	1-1/16"
YA31L-TC38FXG1	250-262 259/.0311 650/24	----	10	.88 [22]	.70 [20]	1.13 [29]	1.29 [33]	.41 [10]	2.84 [72]	.41 [10]	1.00 [25]	.18 [5]	.69 [18]	----	----	NEST INDENTOR	U31D-1 (1) Y34PR11	U31D-1 (1) Y34PR11	1-3/16"
YA31L-TC12FXG1	250-262 259/.0311 650/24	----	12	.88 [22]	.70 [20]	1.13 [29]	1.29 [33]	.53 [13]	3.00 [76]	.53 [13]	1.00 [25]	.18 [5]	.73 [19]	----	----	NEST INDENTOR	U31D-1 (1) Y34PR11	U31D-1 (1) Y34PR11	1-3/16"
YA32L-TC38FXG1	300 259/.0341 703/.0207 1154/.0161	----	10	.95 [24]	.76 [19]	1.19 [30]	1.40 [36]	.41 [10]	3.00 [76]	.41 [10]	1.00 [25]	.19 [5]	.73 [19]	----	----	NEST INDENTOR	U32D-1 (1) Y34PR11	U32D-1 (1) Y34PR11	1-1/4"
YA32L-TC12FXG1	300 259/.0341 703/.0207 1154/.0161	----	12	.95 [24]	.76 [19]	1.19 [30]	1.40 [36]	.53 [13]	3.14 [80]	.53 [13]	1.00 [25]	.19 [5]	.76 [19]	----	----	NEST INDENTOR	U32D-1 (1) Y34PR11	U32D-1 (1) Y34PR11	1-1/4"
YA34L-TC38FXG1	350 & 400 259/.0368 427/.0285 427/.0306 703/.0223	----	10	1.06 [27]	.83 [21]	1.30 [33]	1.55 [39]	.41 [10]	3.27 [83]	.41 [10]	1.00 [25]	.23 [6]	.80 [20]	----	----	NEST INDENTOR	U34D-1 (1) Y34PR11	U34D-1 (1) Y34PR11	1-5/16"
YA34L-TC12FXG1	350 & 400 259/.0368 427/.0285 427/.0306 703/.0223	----	12	1.06 [27]	.83 [21]	1.30 [33]	1.55 [39]	.53 [13]	3.41 [87]	.53 [13]	1.00 [25]	.23 [6]	.81 [21]	----	----	NEST INDENTOR	U34D-1 (1) Y34PR11	U34D-1 (1) Y34PR11	1-5/16"
YA36L-TC12FXG1	450 259/.0417 427/.0325	----	12	1.19 [30]	.92 [23]	1.38 [35]	1.74 [44]	.53 [13]	3.63 [92]	.53 [13]	1.00 [25]	.27 [7]	.89 [23]	----	----	NEST INDENTOR	----- -----	P36D (1) P48PR2	1-3/8"
YA38L-TC12FXG1	500 259/.0439 427/.0342 703/.0267	----	12	1.25 [32]	.98 [25]	1.45 [37]	1.84 [47]	.53 [13]	3.83 [97]	.53 [13]	1.50 [38]	.27 [7]	.96 [24]	----	----	NEST INDENTOR	----- -----	P38D (1) P48PR2	1-7/16"
YA39L-TC12FXG1	571 703/.0285	----	12	1.30 [33]	1.03 [26]	1.30 [33]	1.91 [49]	.53 [13]	3.74 [95]	.53 [13]	1.50 [38]	.27 [7]	1.00 [25]	----	----	NEST INDENTOR	----- -----	P39D (1) P48PR2	1-5/16"
YA40L-TC12FXG1	600 427/.0375	----	12	1.35 [34]	1.05 [27]	1.30 [33]	1.98 [50]	.53 [13]	3.79 [96]	.53 [13]	1.50 [38]	.30 [8]	1.02 [26]	----	----	NEST INDENTOR	----- -----	P40D (1) P48PR2	1-5/16"



- NOTES:
- MATERIAL: COPPER TUBING.
 - FINISH: ELECTRO-TIN PLATED
 - REMOVED PER PCN 2251.
 - CATALOG #PUADP-1 ADAPTOR IS REQUIRED TO USE "U" DIES IN Y46 SERIES TOOLS.
 - CLEARANCE BETWEEN MOUNTING HOLE AND START OF TRANSITION SHOWN AS DIMENSION "Z" HAS BEEN INCREASED TO ALLOW THE RADIUSED TONGUE TIP TO CLEAR THE TRANSITION WHEN ONE CONNECTOR IS PIVOTED AROUND THE MOUNTING BOLT WHEN PAIRED WITH A SECOND CONNECTOR OF SAME SIZE.
 - DIMENSIONS IN BRACKETS [] ARE IN MILLIMETERS ROUNDED OFF TO THE NEAREST MILLIMETER, UNLESS OTHERWISE NOTED, AND ARE FOR REFERENCE ONLY.

FOR SMIT ONLY.

TO ORDER BURNDY®PRODUCTS CALL 1-800-346-4175
MANCHESTER, NH 03109, USA
FOR PRODUCT INFO = <http://www.fciconnect.com>

HYLUG™

ITEM NO: N/A

CAT NO: YA-CL & YAV-CL (TABLE)

SCALE: 1:1

DRAWN BY: J.MICHAUD 12/20/94

CHECKER: D.FILLON 12/20/94

DSN APPVL: R.MACDONALD 12/20/94

MFG APPVL: ---

QC APPVL: D.VARIO 12/21/94

MKT APPVL: ---

PROD FAM: ---

PROJECT #: DO 53201

DOCUMENT TYPE: ---

REL LEVEL: ---

FCI BURNDY PRODUCTS

DRAWING NO: WSE209435

REV: B

SHEET 2 OF 2