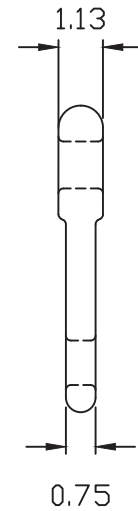
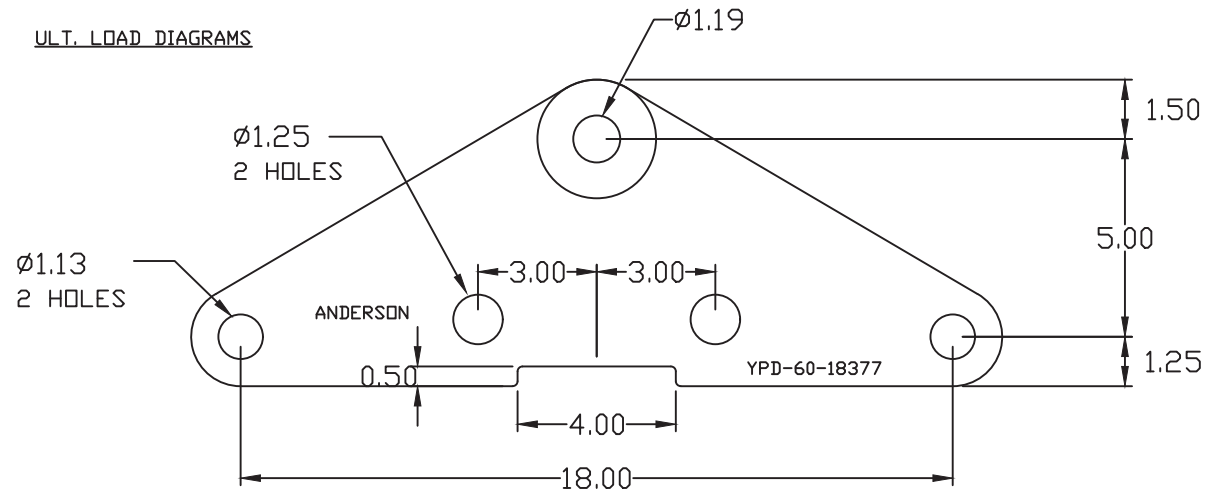


ULT. LOAD DIAGRAMS



NOTES:

1. MATERIAL: GALV. DUCTILE IRON
2. MARKING: RAISED CHARACTERS
3. WEIGHT 18.2 LB
4. DIMENSIONS IN INCHES
5. HOT DIP GALV PER ASTM A153

ANDERSON®		HUBBELL® POWER SYSTEMS	
CONFIDENTIAL: THIS DRAWING AND ITS CONTENTS ARE CONFIDENTIAL AND THE EXCLUSIVE PROPERTY OF HUBBELL POWER SYSTEMS. NO PUBLICATION, DISTRIBUTION OR COPIES MAY BE MADE WITHOUT THE WRITTEN CONSENT OF HUBBELL POWER SYSTEMS. HUBBELL POWER SYSTEMS UNPUBLISHED ALL RIGHTS RESERVED UNDER THE COPYRIGHT LAWS.		TITLE YOKE PLATE 60k ULT	
SIZE C	DWG NO. CUTSHEET	CAT / PART / ASSY NO. YPD-60-18377-1	REV B
DO NOT SCALE THIS DRAWING	DRN BY DJ	DATE 4/12/2018	SHEET 1 OF 1