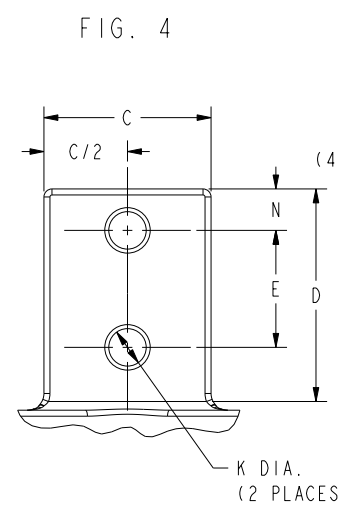
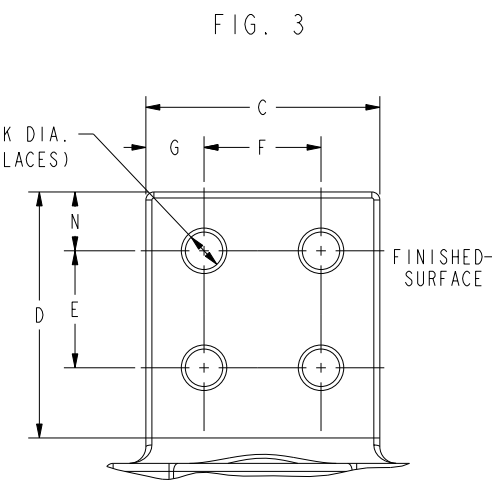
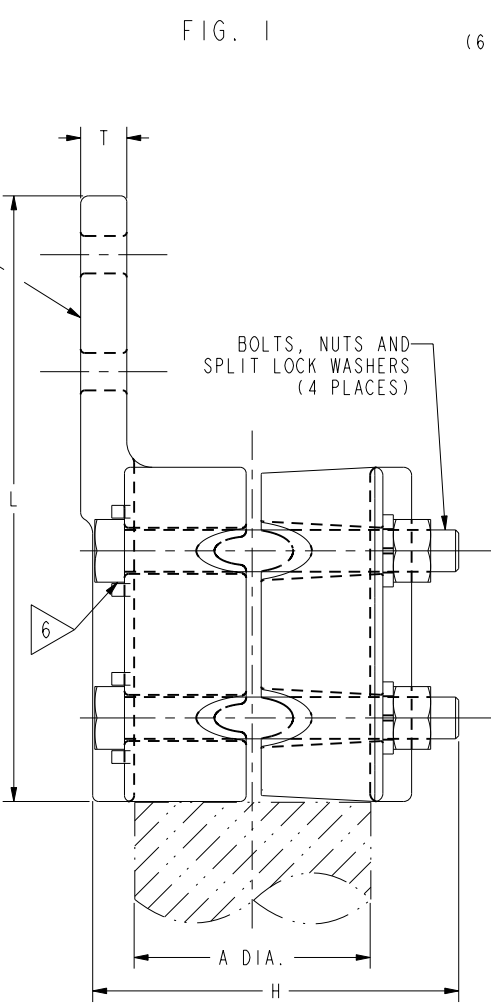
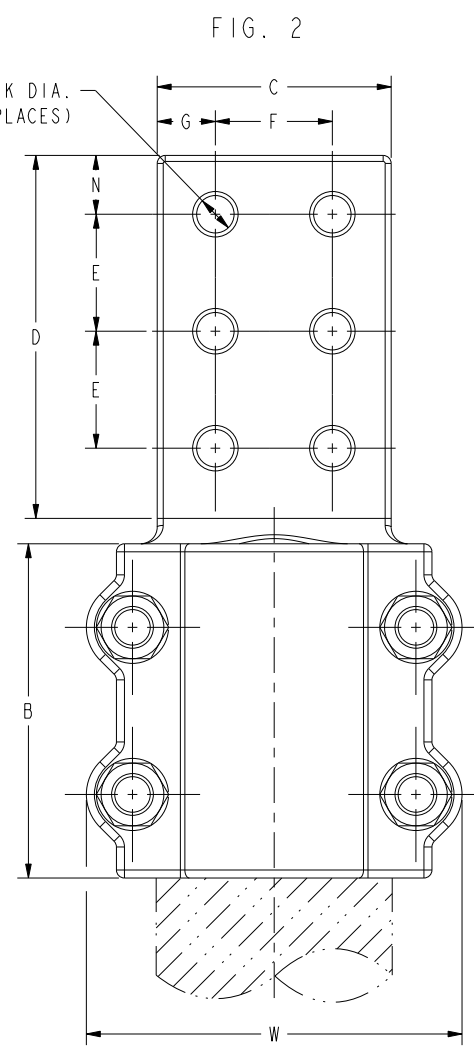
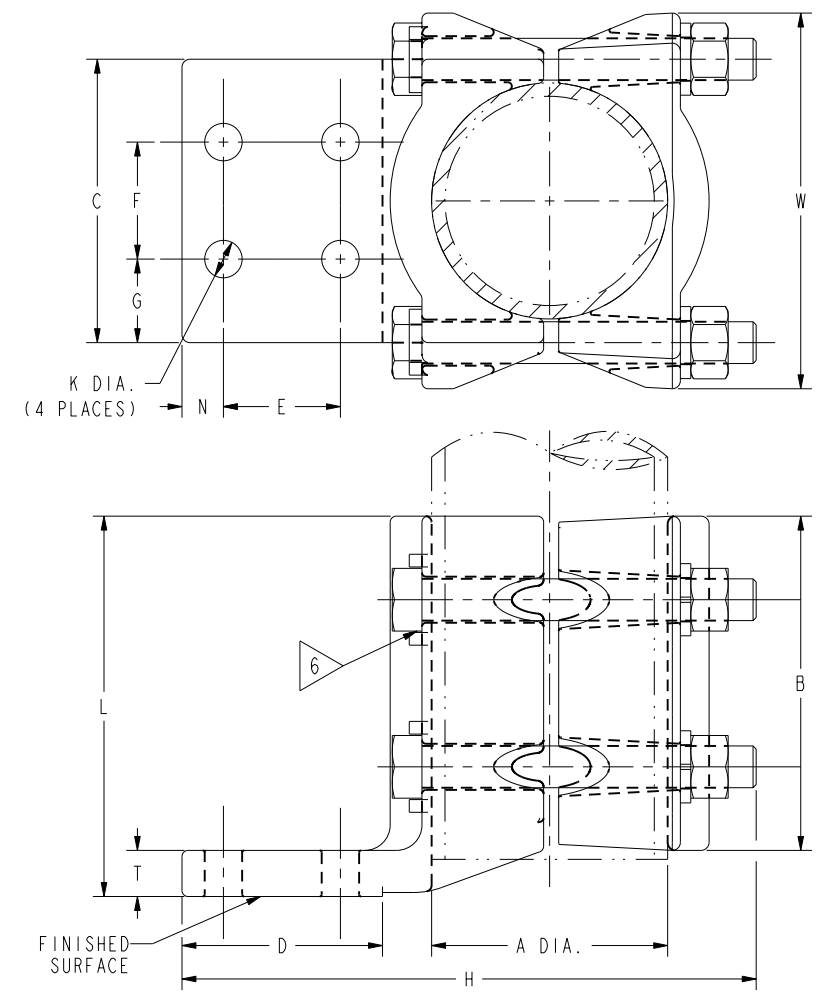


DRAWING NO.
CSD019620-01

CATALOG NO.	ITEM NO.	2 ACCOMMODATES 'A' DIA.	FIG. NO.	HARDWARE MATERIAL	B	C	D	E	F	G	H	K	L	N	T	W	7 MARKING
NA20ACG2	27018651	3" IPS (3.500 [89] DIA.) TUBE	1 & 3	5/8" ALUMINUM	5.00 [127]	3.50 [89]	3.75 [95]	1.75 [44]	1.75 [44]	.88 [22]	5.50 [140]	.56 [14]	9.06 [230]	.88 [22]	.69 [18]	5.62 [143]	BURNDY NA20ACG2
NA20ACG3	30023664	3" IPS (3.500 [89] DIA.) TUBE	1 & 3	5/8" STAINLESS STEEL BOLT, SPLIT LOCK WASHER AND SILICON BRONZE NUT	5.00 [127]	4.38 [111]	3.00 [76]	1.75 [44]	1.75 [44]	1.31 [33]	5.50 [140]	.56 [14]	8.31 [211]	.62 [16]	.69 [18]	5.62 [143]	BURNDY NA20ACG3 RIV 200-138 75 Nm
NA20ACG12	30023665	3" EHPS (3.500 [89] DIA.) TUBE	1 & 2	5/8" GALVANIZED STEEL	5.00 [127]	4.38 [111]	5.00 [127]	1.75 [44]	1.75 [44]	1.31 [33]	5.50 [140]	.56 [14]	10.31 [262]	.75 [19]	.69 [18]	5.62 [143]	BURNDY NA20ACG12
NA20ACG13	30023666	3" IPS (3.500 [89] DIA.) TUBE	5		5.00 [127]	4.38 [111]	3.00 [76]	1.75 [44]	1.75 [44]	1.31 [33]	8.50 [216]	.56 [14]	6.00 [152]	.62 [16]	.69 [18]	5.62 [143]	BURNDY NA20ACG13
NA27ACG2	30023668	4/0 (.460 [12] DIA.) SOLID COPPER CABLE	1 & 3	1/2" STAINLESS STEEL BOLT, SPLIT LOCK WASHER AND SILICON BRONZE NUT	2.75 [70]	3.00 [76]	3.00 [76]	1.75 [44]	1.75 [44]	.62 [16]	3.50 [89]	.56 [14]	6.12 [155]	.62 [16]	.38 [10]	2.28 [58]	BURNDY NA27ACG2 RIV 200-138 55 Nm
NA44ACG11	30023670	900 Kcmil (1.093 [28] DIA.) TO 1000 Kcmil (1.152 [29] DIA.)	1 & 4	1/2" GALVANIZED STEEL	3.50 [89]	3.00 [76]	7.00 [178]	2.95 [75]	--	--	3.25 [83]	1.00 [25]	10.88 [276]	1.75 [45]	.50 [13]	2.90 [74]	BURNDY NA44ACG11

REV	DATE	DESCRIPTION	ECO	BY	C'H'K.
A	01/05/2012 00:00:00 AM	CREATED SALES DRAWING FOR CUSTOMER REQUEST	26447	VV	NJS

FIG. 5



- NOTES:
- MATERIAL:
BODY & CAP: CAST ALUMINUM ALLOY
 - ACCOMMODATES:
SEE TABLE
 - NOMINAL BOLT INSTALLATION TORQUE:
1/2" GALVANIZED STEEL HARDWARE - 480 LB-IN [55 Nm]
1/2" STAINLESS STEEL HARDWARE - 480 LB-IN [55 Nm]
5/8" GALVANIZED STEEL HARDWARE - 660 LB-IN [75 Nm]
5/8" STAINLESS STEEL HARDWARE - 660 LB-IN [75 Nm]
5/8" ALUMINUM HARDWARE - 480 LB-IN [55 Nm]
 - DIMENSIONS IN BRACKETS [] DENOTES METRIC UNITS [SI UNITS] AND ARE ROUNDED TO THE NEAREST WHOLE NUMBER. UNLESS OTHERWISE SPECIFIED THESE UNITS SHALL BE USED FOR REFERENCE ONLY.
 - PENETROX™ NOTE: SCRATCH BRUSH CONNECTOR CONTACT SURFACE DRY, THEN APPLY PENETROX™. PENETROX™ CAN BE PURCHASED FROM BURNDY LLC, IN CANS OR PLASTIC SQUEEZE BOTTLES.
 - HEX BOLTS CAPTURED TO PREVENT TURNING DURING INSTALLATION.
 - MARKING:
SEE TABLE

TO ORDER BURNDY® PRODUCTS CALL		TERMINAL	
UNITED STATES 1-800-346-4175 (LONDONDERRY, NH)		ITEM NO: SEE TABLE	CAT. NO: NA--ACG-- (TABLE)
CANADA: 1-800-361-6975 (QUEBEC) 1-800-387-6487 (ALL OTHER PROVINCES)		DRAWN BY: V VINOTH 01/05/12	CHECKER: NJ SUDHAKAR 01/05/12
FOR PRODUCT INFO: http://www.burndy.com		DSN APPVL: R LAVOIE 02/15/12	MFG APPVL: --
		QA APPVL: J HILLMAN 02/14/12	MKT APPVL: V TORRES 02/14/12
		PROJ #:	SIZE
		DOCUMENT TYPE: Sales	CSD019620-01
		REL LEVEL: Released	SHEET 1 OF 1

REV: PE0200