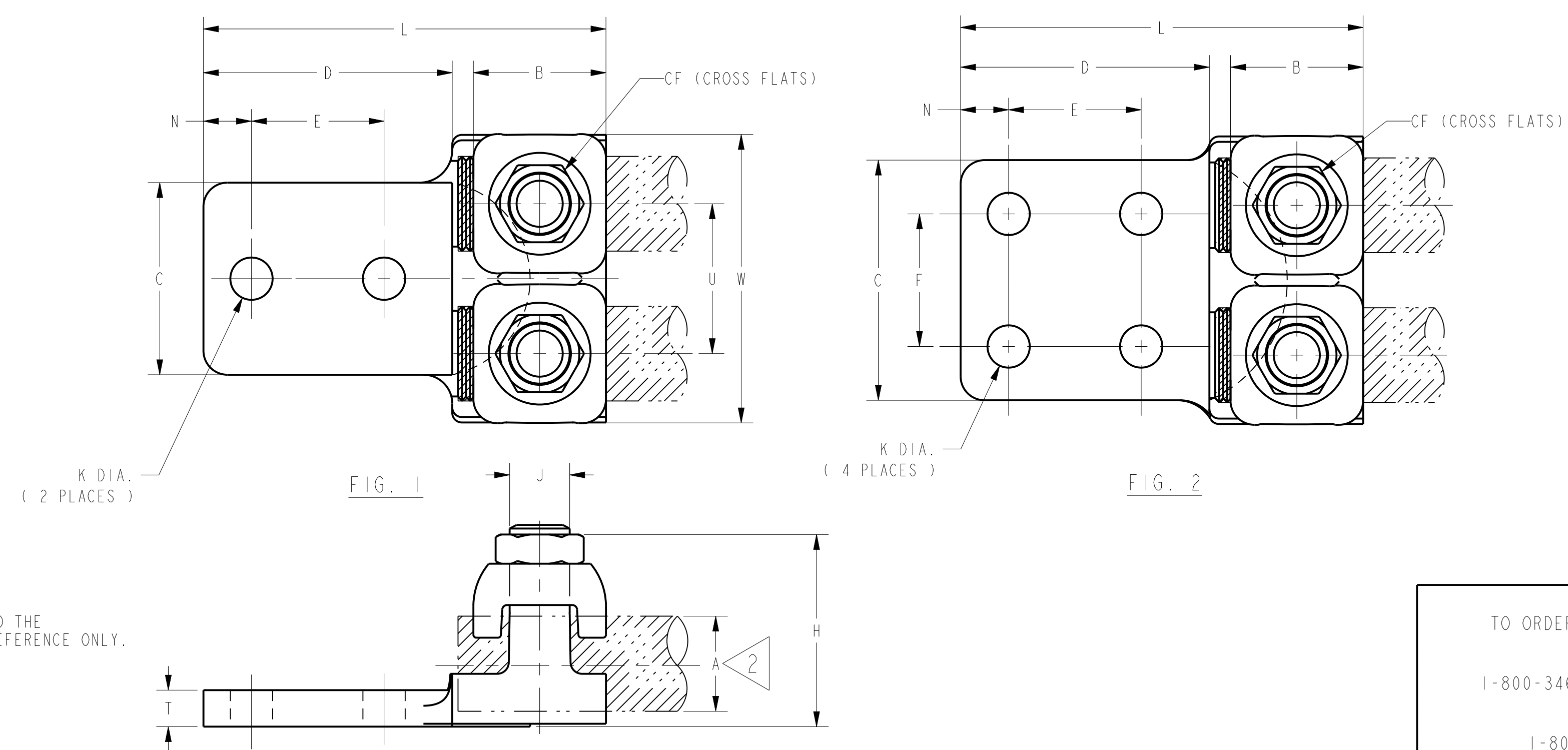


ITEM NO.	CATALOG NUMBER	CONDUCTOR RANGE (COPPER) A	FIG. NO.	7		6		5		4		3		2		1	
				B	C	CF	D	E&F	H	J	K	L	N	T	U	W	MARKING
358442	Q2A8C2	14 SOL.(.064) - 8 STR.(.146)	1	.75 [19]	1.25 [32]	.56 [14]	1.56 [40]	.88 [22]	1.00 [25]	.469-20	.34 [9]	2.38 [60]	.34 [9]	.19 [5]	1.03 [26]	1.69 [43]	BURNDY Q2A8C2 14 SOL - 8 STR
50032816	Q2A8C4	14 SOL.(.064) - 8 STR.(.146)	2	.75 [19]	1.56 [40]	.56 [14]	1.56 [40]	.88 [22]	1.00 [25]	.469-20	.34 [9]	2.38 [60]	.34 [9]	.19 [5]	1.03 [26]	1.69 [43]	BURNDY Q2A8C4 14 SOL - 8 STR
50032817	Q2A4C2	8 STR.(.146) - 4 STR.(.232)	1	.75 [19]	1.25 [32]	.56 [14]	1.56 [40]	.88 [22]	1.00 [25]	.469-20	.34 [9]	2.38 [60]	.34 [9]	.19 [5]	1.03 [26]	1.69 [43]	BURNDY Q2A4C2 8 - 4 STR
50032818	Q2A4C4	8 STR.(.146) - 4 STR.(.232)	2	.75 [19]	1.56 [40]	.56 [14]	1.56 [40]	.88 [22]	1.00 [25]	.469-20	.34 [9]	2.38 [60]	.34 [9]	.19 [5]	1.03 [26]	1.69 [43]	BURNDY Q2A4C4 8 - 4 STR
358108	Q2A1C2	4 STR.(.232) - 1 STR.(.330)	1	.88 [22]	1.50 [38]	.56 [14]	1.88 [48]	1.00 [25]	1.06 [27]	.438-20	.44 [11]	2.88 [73]	.44 [11]	.22 [6]	1.06 [27]	1.81 [46]	BURNDY Q2A1C2 4 - 1 STR
50032819	Q2A1C4	4 STR.(.232) - 1 STR.(.330)	2	.88 [22]	1.88 [48]	.56 [14]	1.88 [48]	1.00 [25]	1.06 [27]	.438-20	.44 [11]	2.88 [73]	.44 [11]	.22 [6]	1.06 [27]	1.81 [46]	BURNDY Q2A1C4 4 - 1 STR
358122	Q2A262	1/0 STR.(.373) - 2/0 STR.(.418)	1	.94 [24]	1.62 [41]	.69 [18]	2.00 [51]	1.00 [25]	1.19 [30]	.500-20	.44 [11]	3.06 [78]	.44 [11]	.22 [6]	1.06 [27]	1.94 [49]	BURNDY Q2A262 1/0 - 2/0 STR
50032820	Q2A264	1/0 STR.(.373) - 2/0 STR.(.418)	2	.94 [24]	1.88 [48]	.69 [18]	2.00 [51]	1.00 [25]	1.19 [30]	.500-20	.44 [11]	3.06 [78]	.44 [11]	.22 [6]	1.06 [27]	1.94 [49]	BURNDY Q2A264 1/0 - 2/0 STR
50032821	Q2A284	3/0 STR.(.470) - 4/0 STR.(.528)	2	1.06 [27]	1.88 [48]	.69 [18]	2.00 [51]	1.00 [25]	1.31 [33]	.500-20	.44 [11]	3.19 [81]	.44 [11]	.25 [6]	1.06 [27]	2.12 [54]	BURNDY Q2A284 3/0 - 4/0 STR
50032822	Q2A314	250 kcmil(.575) - 350 kcmil(.681)	2	1.19 [30]	2.38 [60]	.75 [19]	2.50 [64]	1.38 [35]	1.69 [43]	.562-18	.44 [11]	3.81 [97]	.50 [13]	.31 [8]	1.38 [35]	2.69 [68]	BURNDY Q2A314 250 - 350 Kcmil
358497	Q2A344	400 kcmil(.728) - 500 kcmil(.814)	2	1.38 [35]	2.50 [64]	.81 [21]	2.62 [67]	1.38 [35]	2.00 [51]	.625-18	.56 [14]	4.19 [106]	.56 [14]	.38 [10]	1.56 [40]	3.00 [76]	BURNDY Q2A344 400 - 500 Kcmil
50032823	Q2A404	600 kcmil(.893) - 800 kcmil(1.031)	2	1.62 [41]	3.00 [76]	1.00 [25]	3.12 [79]	1.62 [41]	2.38 [60]	.750-16	.56 [14]	4.94 [125]	.69 [18]	.44 [11]	1.88 [48]	3.62 [92]	BURNDY Q2A404 600 - 800 Kcmil
50032824	Q2A464	1100 kcmil(1.209) - 1500 kcmil(1.412)	2	2.00 [51]	3.50 [89]	1.25 [32]	3.75 [95]	2.00 [51]	2.94 [75]	.875-14	.69 [18]	6.00 [152]	.75 [19]	.69 [18]	2.31 [59]	4.50 [114]	BURNDY Q2A464 1100 - 1500 Kcmil
50032825	Q2A484	1600 kcmil(1.459) - 2000 kcmil(1.631)	2	2.38 [60]	4.00 [102]	1.44 [37]	4.25 [107]	2.25 [57]	3.25 [83]	1.000-14	.69 [18]	6.88 [175]	.88 [22]	.81 [21]	2.50 [64]	4.88 [124]	BURNDY Q2A484 1600 - 2000 Kcmil

REV	DATE	DESCRIPTION	ECO	BY	C.H.K.
B	09/02/2015 00:00:00 AM	FOCUS REQUEST FPM1508079 ADDING PLATING NOTE TO DRAWING	41476	AS	MB



- 1 MATERIAL:
CAST COPPER ALLOY
- 2 ACCOMMODATES:
SEE TABLE
- 3. DIMENSIONS IN BRACKETS [] ARE IN MILLIMETERS ROUNDED OFF TO THE NEAREST MILLIMETER, UNLESS OTHERWISE SPECIFIED AND ARE FOR REFERENCE ONLY.
- 4 MARKING: SEE TABLE
- 5 OPTIONAL PLATING VARIATIONS ARE AVAILABLE BY ADDING THE FOLLOWING SUFFIX TO THE CATALOG NUMBER.
EXAMPLE: Q2A312NTN
TN = TIN PLATED
NK = NICKEL PLATED
SV = SILVER PLATED
LD = LEAD PLATED

TO ORDER BURNDY® PRODUCTS CALL		Q1KLUGS	
UNITED STATES 1-800-346-4175 (LONDONDERRY, NH)		ITEM NO: SEE TABLE	
CANADA: 1-800-361-6975 (QUEBEC) 1-800-387-6487 (ALL OTHER PROVINCES)		CAT. NO: Q2A- (TABLE)	
FOR PRODUCT INFO: http://www.burndy.com		DRAWN BY: A BALA 10/01/13	
		CHECKER: NJS 10/04/13	
		DSN APPVL: T REYNOLDS 10/07/13	
		MFG APPVL: -- --	
		QA APPVL: C KOWALCZYK 10/11/13	
		MKT APPVL: M BAILLY 10/07/13	
		SCALE: 1:1	
		PROJECT #: -- SIZE	
		DOCUMENT TYPE: Sales SA005943-01	
		REL LEVEL: Released D SHEET 1 OF 1	

REV: PEG200