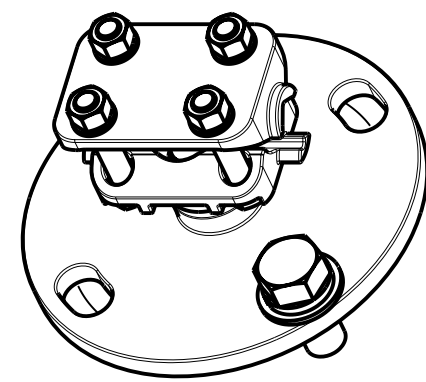
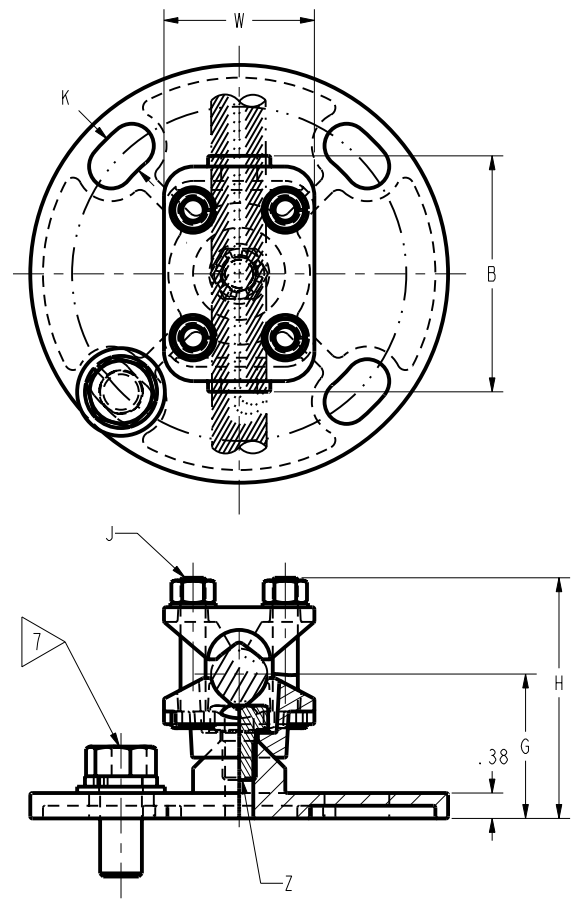


REV.	DATE	DESCRIPTION	ECO	BY	C'H'K.
A	09/19/2011 00:00:00 AM	REVISION SKIPPED IN PLOT	25673	BR	NJS

ITEM NO.	CAT NO.	ITEM NO.	CAT NO.	ITEM NO.	CAT NO.	CONDUCTOR RANGE				DIA. OF BOLT CIRCLE	DIMENSIONS IN IN/[MM]							APPROX. SHIP. WT. IN LBS.	MARKING
						CABLE		IPS			B	G	H	J	K	W	Z		
						MIN.	MAX.	MIN.	MAX.										
323820	UHR133	323589	UHR133B	323626	UHR133W	#6 STR. (.184 [5] DIA.)	500 Kcmil (.813 [21] DIA.)	1/8" (.405 [10] DIA.)	1/2" (.840 [21] DIA.)	3.00 [76]	3.56 [90]	1.75 [44]	3.00 [76]	3/8-16 X 2" LG	0.56 [14]	2.25 [57]	1/2-13 X .75 LG	3.0	BURNDY UHR133 6 STR - 500 Kcmil AL OR CU CABLE 1/8" - 1/2" IPS PIPE
323825	UHR135	27014880	UHR135B	25004135	UHR135W	#6 STR. (.184 [5] DIA.)	500 Kcmil (.813 [21] DIA.)	1/8" (.405 [10] DIA.)	1/2" (.840 [21] DIA.)	5.00 [127]	3.56 [90]	2.12 [54]	3.38 [86]	3/8-16 X 2" LG	0.69 [18]	2.25 [57]	1/2-13 X .75 LG	4.2	BURNDY UHR135 6 STR - 500 Kcmil AL OR CU CABLE 1/8" - 1/2" IPS PIPE
323835	UHR153	323588	UHR153B	32367W	UHR153W	4/0 STR. (.528 [13] DIA.)	1250 Kcmil (1.289 [33] DIA.)	1/4" (.540 [14] DIA.)	1" (1.315 [33] DIA.)	3.00 [76]	3.69 [94]	2.00 [51]	3.50 [89]	3/8-16 X 2 1/4" LG	0.56 [14]	2.75 [70]	5/8-11 X .75 LG	3.5	BURNDY UHR153 4/0 STR - 1250 Kcmil AL OR CU CABLE 1/4" - 1" IPS PIPE
32376N	UHR155	323596	UHR155B	30019512	UHR155W	4/0 STR. (.528 [13] DIA.)	1250 Kcmil (1.289 [33] DIA.)	1/4" (.540 [14] DIA.)	1" (1.315 [33] DIA.)	5.00 [127]	3.69 [94]	2.25 [57]	3.75 [95]	3/8-16 X 2 1/4" LG	0.69 [18]	2.75 [70]	5/8-11 X .75 LG	4.7	BURNDY UHR155 4/0 STR - 1250 Kcmil AL OR CU CABLE 1/4" - 1" IPS PIPE
323850	UHR173	323602	UHR173B	323650	UHR173W	750Kcmil (.998 [25] DIA.)	2500 Kcmil (1.824 [46] DIA.)	3/4" (1.050 [27] DIA.)	1-1/2" (1.900 [48] DIA.)	3.00 [76]	2.81 [71]	2.50 [64]	4.25 [108]	1/2-13 X 2 3/4" LG	0.56 [14]	3.94 [100]	5/8-11 X .88 LG	6.1	BURNDY UHR173 750 - 2500 Kcmil AL OR CU CABLE 3/4" - 1-1/2" IPS PIPE
32370V	UHR175	323597	UHR175B	32391P	UHR175W	750Kcmil (.998 [25] DIA.)	2500 Kcmil (1.824 [46] DIA.)	3/4" (1.050 [27] DIA.)	1-1/2" (1.900 [48] DIA.)	5.00 [127]	2.81 [71]	2.50 [64]	4.25 [108]	1/2-13 X 2 3/4" LG	0.69 [18]	3.94 [100]	5/8-11 X .88 LG	7.5	BURNDY UHR175 750 - 2500 Kcmil AL OR CU CABLE 3/4" - 1-1/2" IPS PIPE
25016494	UHR183	30019513	UHR183B	30019514	UHR183W	--	--	1-1/4" (1.660 [42] DIA.)	2" (2.375 [60] DIA.)	3.00 [76]	2.81 [71]	2.75 [70]	4.75 [121]	1/2-13 X 2 1/2" LG	0.56 [14]	4.62 [117]	5/8-11 X .88 LG	6.0	BURNDY UHR183 1-1/4" - 2" IPS PIPE
27016853	UHR185	30019515	UHR185B	32380W	UHR185W	--	--	1-1/4" (1.660 [42] DIA.)	2" (2.375 [60] DIA.)	5.00 [127]	2.81 [71]	2.75 [70]	4.75 [121]	1/2-13 X 2 1/2" LG	0.69 [18]	4.62 [117]	5/8-11 X .88 LG	7.5	BURNDY UHR185 1-1/4" - 2" IPS PIPE

NOTES

- MATERIAL:
BODY & CAP: CAST COPPER ALLOY
- ACCOMMODATES: SEE TABLE
- NOMINAL BOLT INSTALLATION TORQUE:
3/8" SILICON BRONZE HARDWARE - 240 LB-IN [30 Nm]
1/2" SILICON BRONZE HARDWARE - 480 LB-IN [55 Nm]
1/2" STAINLESS STEEL HARDWARE - 480 LB-IN [55 Nm]
1/2" GALVANIZED STEEL HARDWARE - 480 LB-IN [55 Nm]
5/8" SILICON BRONZE HARDWARE - 660 LB-IN [75 Nm]
5/8" STAINLESS STEEL HARDWARE - 660 LB-IN [75 Nm]
5/8" GALVANIZED STEEL HARDWARE - 660 LB-IN [75 Nm]
- DIMENSIONS IN BRACKETS [] DENOTES METRIC UNITS [SI UNITS] AND ARE ROUNDED TO THE NEAREST WHOLE NUMBER. UNLESS OTHERWISE SPECIFIED THESE UNITS SHALL BE USED FOR REFERENCE ONLY.
- DOES NOT HAVE EXTENDING LIPS.
- FINISH:- TIN PLATED (WHEN USED WITH ALUMINUM CONDUCTORS ONLY, INCLUDING HARDWARE)
- FOR BASE MOUNTING:-
3" DIA. BOLT CIRCLE FURNISHED WITH FOUR 1/2" X 1 1/2" HOT DIPPED STEEL BOLTS, NUTS, FLATWASHERS AND SPLIT LOCKWASHERS.
5" DIA. BOLT CIRCLE FURNISHED WITH FOUR 5/8" X 1 3/4" HOT DIPPED STEEL BOLTS, NUTS, FLATWASHERS AND SPLIT LOCKWASHERS.
FOR CAP MOUNTING:-
3" DIA. BOLT CIRCLE FURNISHED WITH FOUR 1/2" X 1" HOT DIPPED GALVANIZED STEEL BOLTS, NUTS, FLATWASHERS, AND SPLIT LOCKWASHERS.
5" DIA. BOLT CIRCLE FURNISHED WITH FOUR 5/8" X 1" HOT DIPPED GALVANIZED STEEL BOLTS, NUTS, FLATWASHERS, AND SPLIT LOCKWASHERS.
- "B" IN THE CATALOG NUMBER DENOTES ASSEMBLY WITH BASE MOUNTING HARDWARE.
- "W" IN THE CATALOG NUMBER DENOTES TIN PLATED ASSEMBLY WITH



3D VIEW

TO ORDER BURNDY® PRODUCTS CALL		BUS SUPPORT CLAMP	
UNITED STATES 1-800-346-4175 (LONDONDERRY, NH)		ITEM NO: SEE TABLE	CAT. NO: SEE TABLE
CANADA: 1-800-361-6975 (QUEBEC) 1-800-387-6487 (ALL OTHER PROVINCES)		DRAWN BY: BHARATHIRAJA 09/23/11	CHECKER: --
FOR PRODUCT INFO: http://www.burndy.com		DSN APPVL: R LAVOIE 10/24/11	MFG APPVL: --
		QA APPVL: C ACKERMAN 10/25/11	MKT APPVL: B MICHAUD 10/22/11
		PROJ #:	SCALE: 1:1
		SIZE: D	DRAWING NO: SA039220-01
		DOCUMENT TYPE: Sales	REV: A
		REL LEVEL: Released	SHEET 1 OF 1

REV: PE0200