

D

C

B

A

D

C

B

A

COPPER CABLE RANGE

CATALOG NUMBER ⁴ FIG. NO. DIMENSIONS IN / [mm] ²

COMPLETE CABLE RANGE ³	SMALL RANGE	LARGE RANGE	CATALOG NUMBER ⁴	FIG. NO.	B	H	J DIA.	L	T	W	U
#6 SOL. (.162 DIA.) TO 250 Kcmil (.575 DIA.)	#6 SOL. (.162 DIA.) TO 1/0 STR. (.325 DIA.)	2/0 STR. (.420 DIA.) TO 250 Kcmil (.575 DIA.)	N2AH2934N	5	2.63 [67]	1.75 [44]	1/2-13	5.87 [149]	.32 [8]	4.88 [124]	2.44 [62]
1/0 STR. (.325 DIA.) TO 500 Kcmil (.813 DIA.)	1/0 STR. (.325 DIA.) TO 4/0 STR. (.529 DIA.)	250 Kcmil (.575 DIA.) TO 500 Kcmil (.813 DIA.)	N2AH342N	4	2.63 [67]	2.30 [58]	1/2-13	5.87 [149]	.50 [13]	5.44 [138]	2.88 [73]
1/0 STR. (.325 DIA.) TO 500 Kcmil (.813 DIA.)	1/0 STR. (.325 DIA.) TO 4/0 STR. (.529 DIA.)	250 Kcmil (.575 DIA.) TO 500 Kcmil (.813 DIA.)	N2AH3434N	5	2.63 [67]	2.30 [58]	1/2-13	6.13 [156]	.32 [8]	5.44 [138]	2.88 [73]
1/0 STR. (.325 DIA.) TO 500 Kcmil (.813 DIA.)	1/0 STR. (.325 DIA.) TO 4/0 STR. (.529 DIA.)	250 Kcmil (.575 DIA.) TO 500 Kcmil (.813 DIA.)	N2AH3444N	6	2.63 [67]	2.30 [58]	1/2-13	7.00 [178]	.32 [8]	5.44 [138]	2.88 [73]
2/0 STR. (.420 DIA.) TO 800 Kcmil (1.031 DIA.)	2/0 STR. (.420 DIA.) TO 500 Kcmil (.813 DIA.)	500 Kcmil (.813 DIA.) TO 800 Kcmil (1.031 DIA.)	N2AH4034N	5	2.63 [67]	2.62 [67]	1/2-13	5.88 [149]	.32 [8]	5.70 [145]	2.92 [74]
4/0 STR. (.529 DIA.) TO 1000 Kcmil (1.152 DIA.)	4/0 STR. (.529 DIA.) TO 750 Kcmil (.998 DIA.)	750 Kcmil (.998 DIA.) TO 1000 Kcmil (1.152 DIA.)	N2AH4434N	5	2.88 [73]	2.62 [67]	1/2-13	6.38 [175]	.50 [13]	6.12 [155]	3.12 [79]
4/0 STR. (.529 DIA.) TO 1000 Kcmil (1.152 DIA.)	4/0 STR. (.529 DIA.) TO 750 Kcmil (.998 DIA.)	750 Kcmil (.998 DIA.) TO 1000 Kcmil (1.152 DIA.)	N2AH4444N	6	2.88 [73]	2.25 [57]	1/2-13	7.32 [186]	.50 [13]	6.12 [155]	3.12 [79]
1000 Kcmil (1.152 DIA.) TO 1500 Kcmil (1.411 DIA.)	-----	1000 Kcmil (1.152 DIA.) TO 1500 Kcmil (1.411 DIA.)	N2AH4644N	6	3.07 [78]	2.50 [64]	1/2-13	7.46 [189]	.75 [19]	6.50 [165]	3.38 [86]
500 Kcmil (.813 DIA.) TO 2000 Kcmil (1.632 DIA.)	500 Kcmil (.813 DIA.) TO 1500 Kcmil (1.411 DIA.)	1500 Kcmil (1.411 DIA.) TO 2000 Kcmil (1.632 DIA.)	N2AH4844N	6	3.25 [83]	3.13 [80]	1/2-13	7.62 [194]	.75 [19]	9.50 [241]	4.00 [102]
#6 SOL. (.162 DIA.) TO 250 Kcmil (.575 DIA.)	#6 SOL. (.162 DIA.) TO 1/0 STR. (.325 DIA.)	2/0 STR. (.420 DIA.) TO 250 Kcmil (.575 DIA.)	N2AH292N	4	2.63 [67]	1.75 [44]	1/2-13	5.87 [149]	.32 [8]	4.88 [124]	2.44 [62]

REV	DATE	DESCRIPTION	ECO	BY	C'H'K.
F	2020-08-21 01:00:00 EDT	MU UPDATION	54110	SS	YR

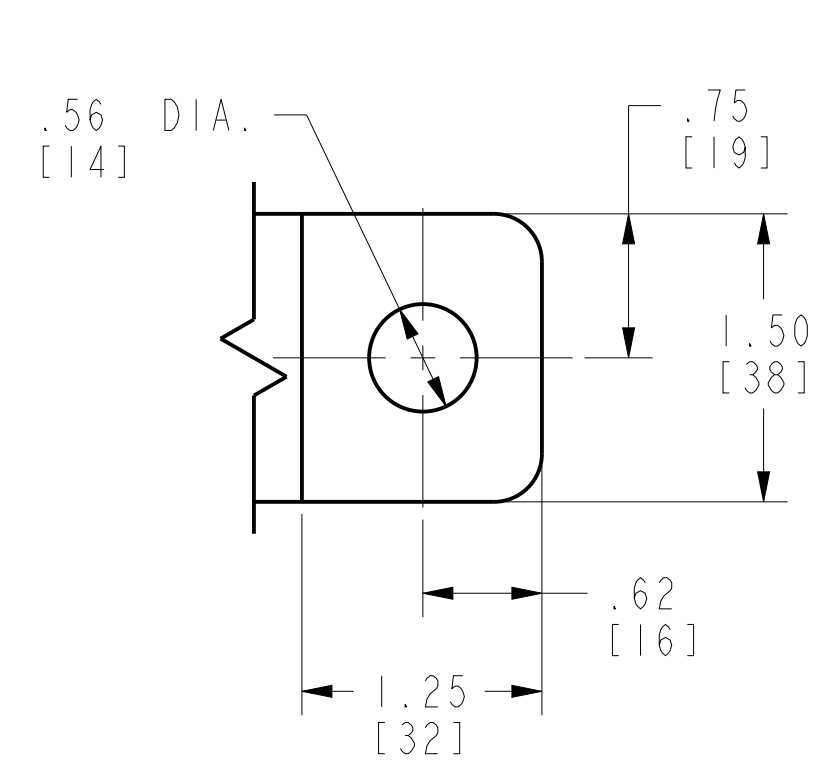


FIG. 1

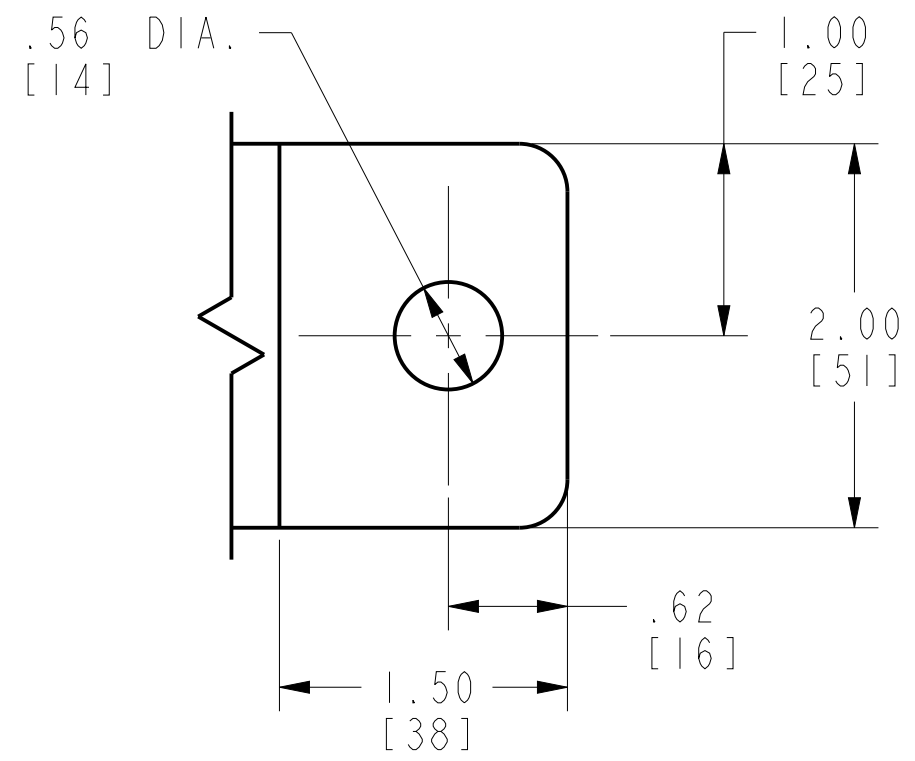


FIG. 2

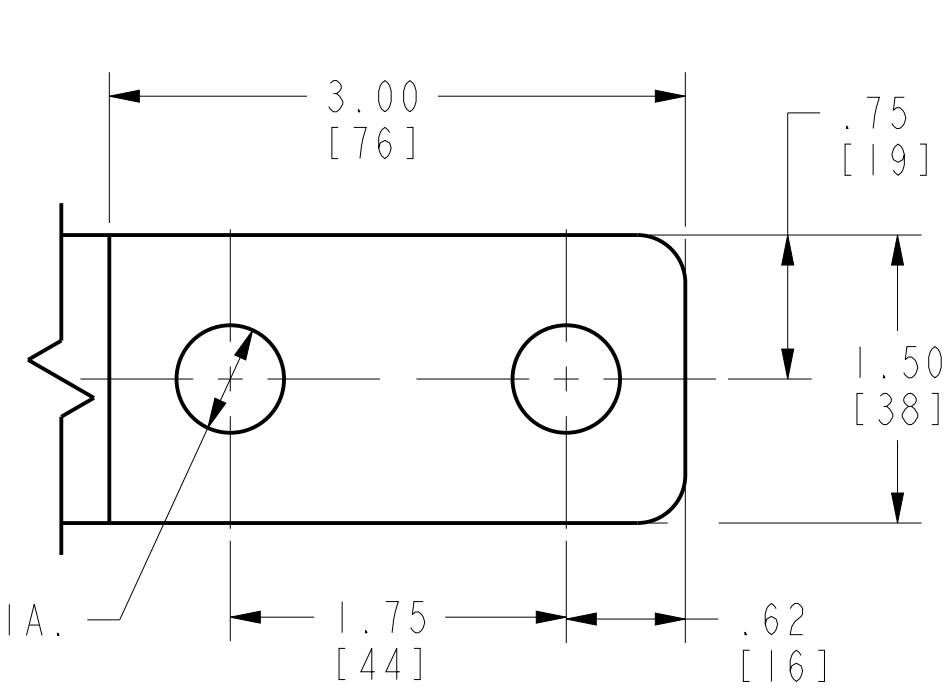


FIG. 3

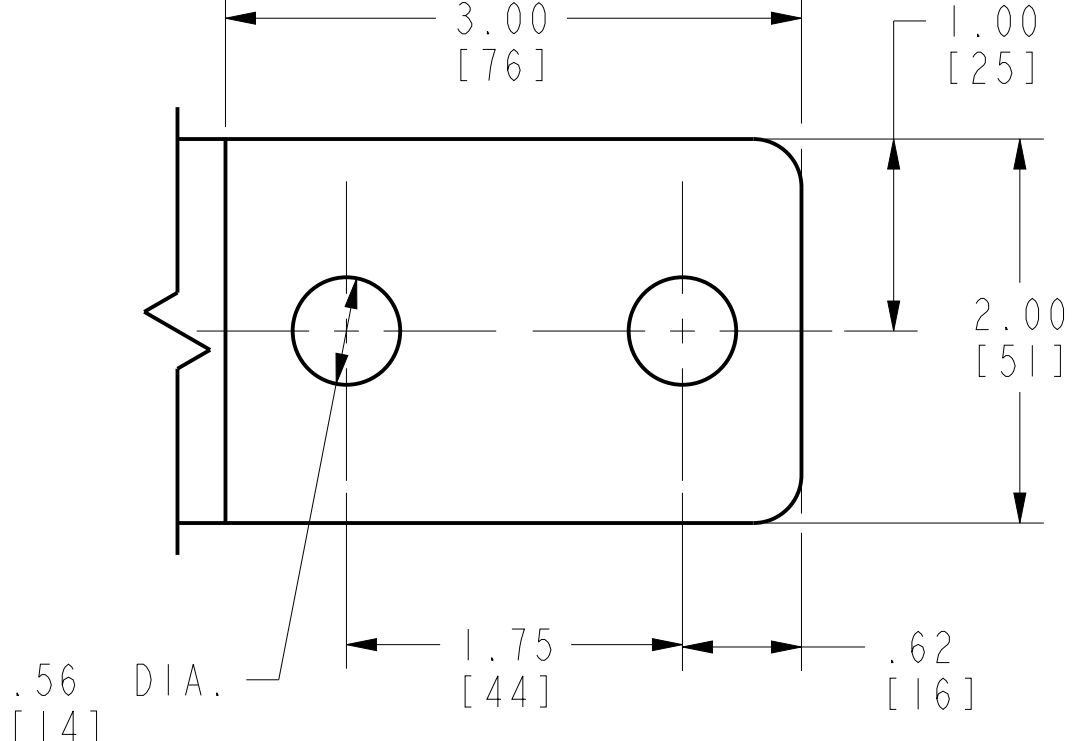


FIG. 4

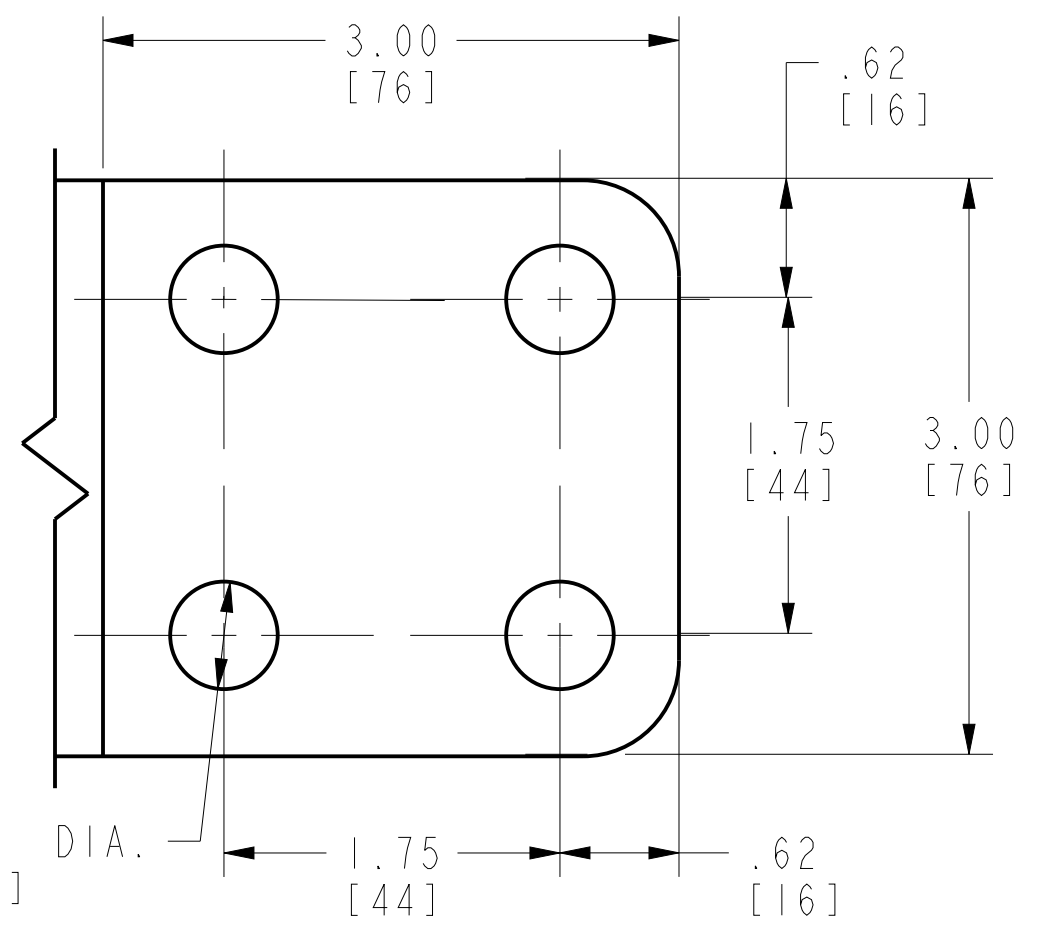


FIG. 5

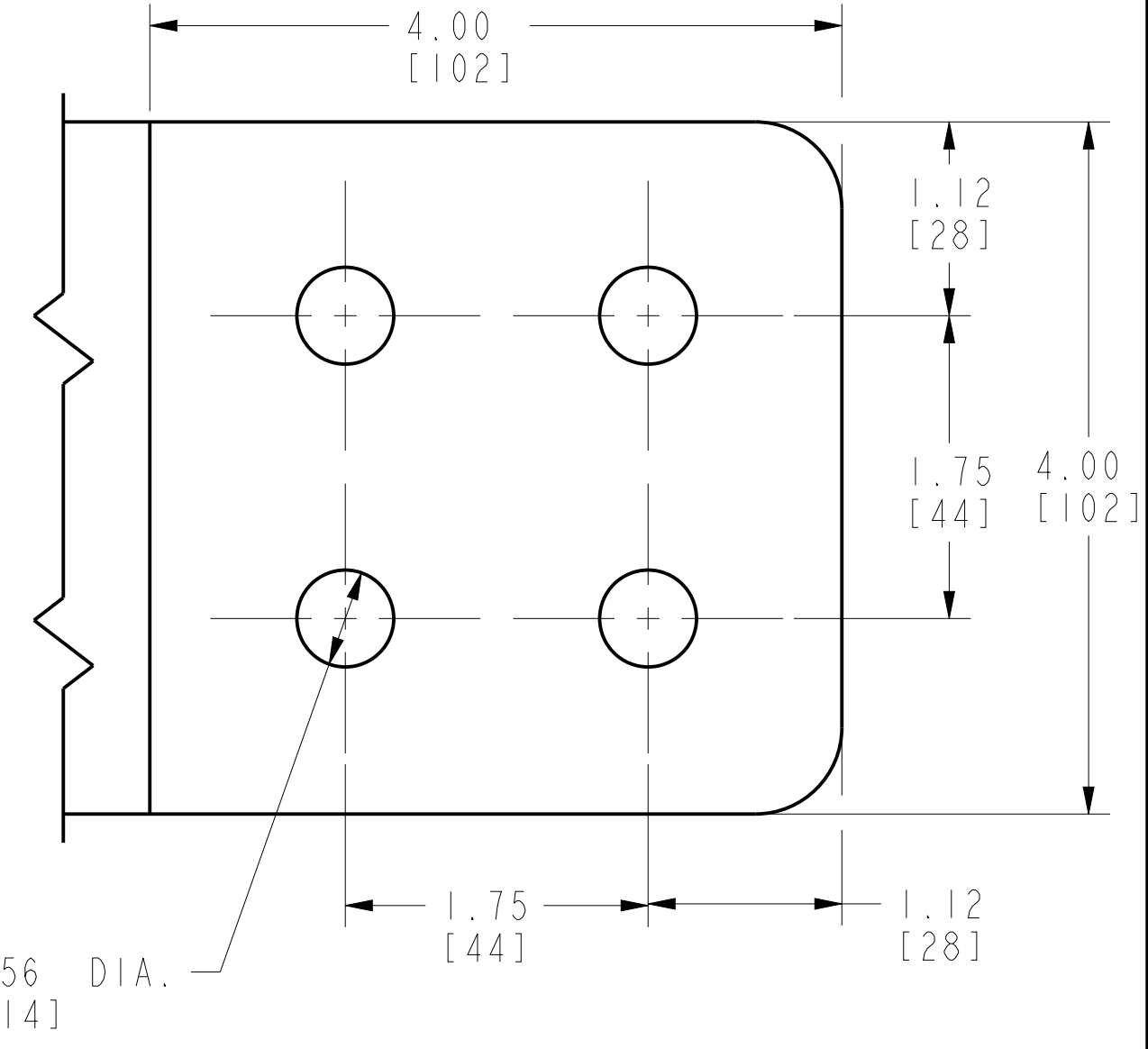
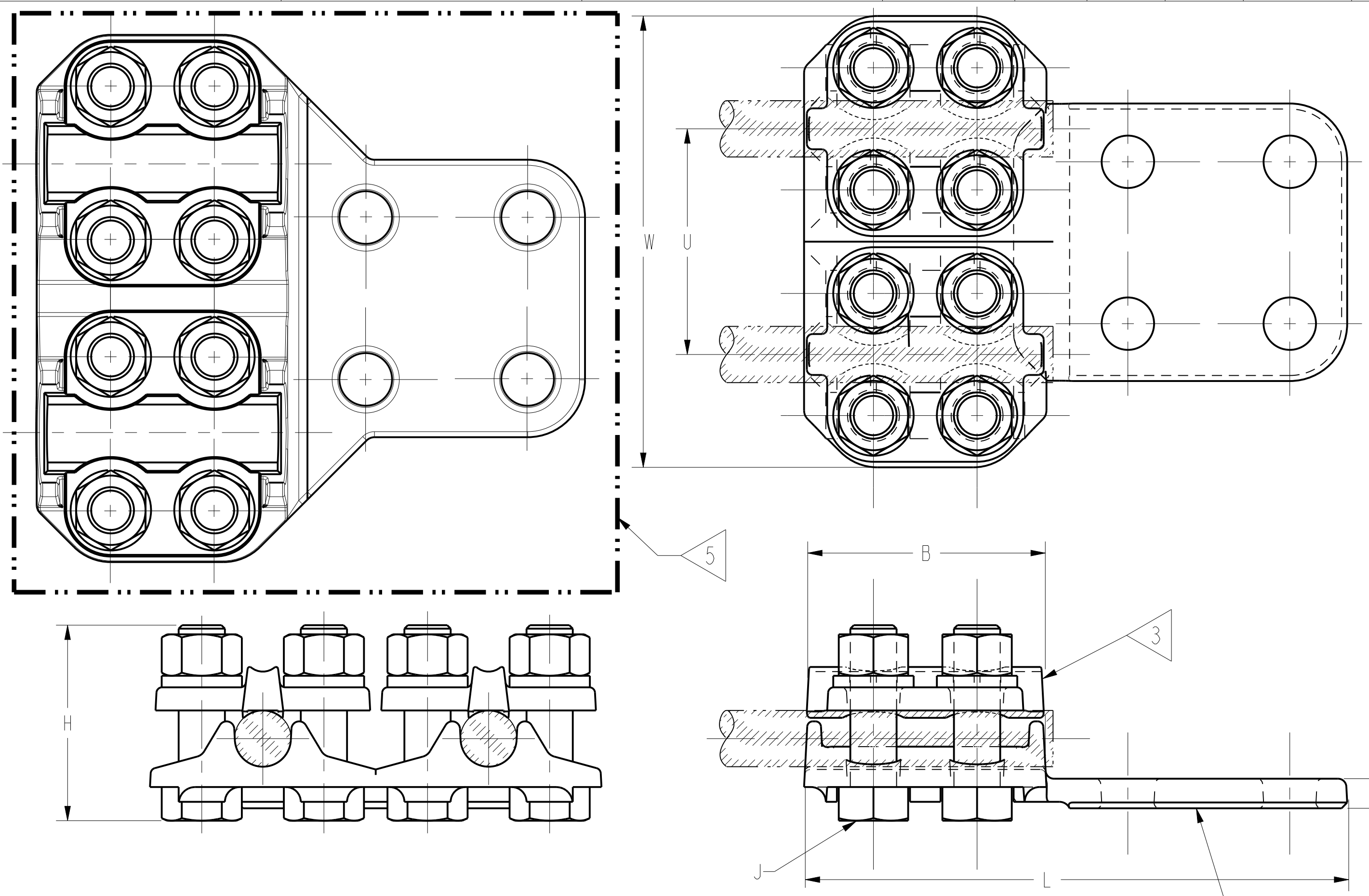


FIG. 6



NOTES:
 1 MATERIAL:
 CONNECTOR : CAST COPPER ALLOY
 HARDWARE : SILICON BRONZE
 2 DIMENSIONS IN BRACKETS [] ARE IN MILLIMETERS ROUNDED OFF TO THE NEAREST MILLIMETER, UNLESS OTHERWISE SPECIFIED AND ARE FOR REFERENCE ONLY.
 3 COMPLETE RANGE MAY BE ACCOMMODATED BY REVERSING THE CAP.

4 PLATING OPTIONS: ADD SUFFIX TO DENOTE PLATING REQUIREMENTS.
 W = HOT-TIN DIPPED.
 TN = ELECTRO-TIN PLATED.
 SV = MATTE SILVER PLATING.
 NK = NICKEL PLATING.
 CONTACT BURNDY® FOR OTHER PLATING OPTIONS.
 5 THIS ITEM ONLY HAS PREFERRED DESIGN BY THE CUSTOMER.

TO ORDER BURNDY® PRODUCTS CALL
 UNITED STATES
 1-800-346-4175 (LONDONDERRY, NH)
 CANADA:
 1-800-361-6975 (QUEBEC)
 1-800-387-6487 (ALL OTHER PROVINCES)
 FOR PRODUCT INFO: <http://www.burndy.com>

BOLTED CU TERMINAL, 2 CABLES TO FLAT	
ITEM NO:	---
CAT. NO:	N2AH_ (SEE TABLE)
DRAWN BY:	S PANDIAN 07/24/09
CHECKER:	D BOUDREAU 05/16/20
DSN APPVL:	D BOUDREAU 05/16/20
MFG APPVL:	T MAWRZYNIAK 10/15/19
QA APPVL:	B ELLIOTT 10/09/19
MKT APPVL:	R LOVELESS 01/25/20
PROD FAM:	SUBSTATION
PROJECT #:	---
DOCUMENT TYPE:	Sales
REL LEVEL:	Released
SCALE:	NTS
DRAWING NO:	SA207485-01
SHEET:	1 OF 1



REV: PEC200