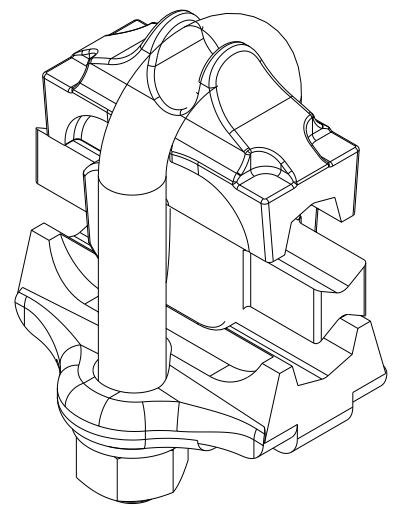
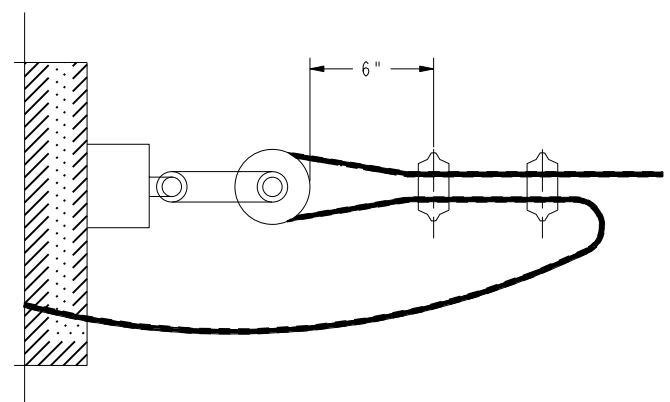
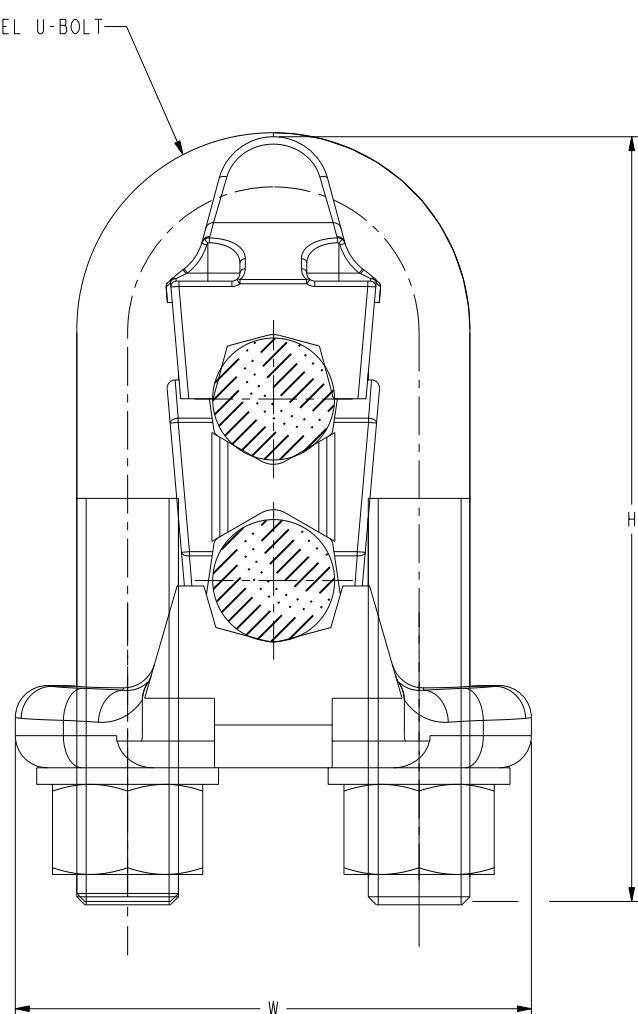
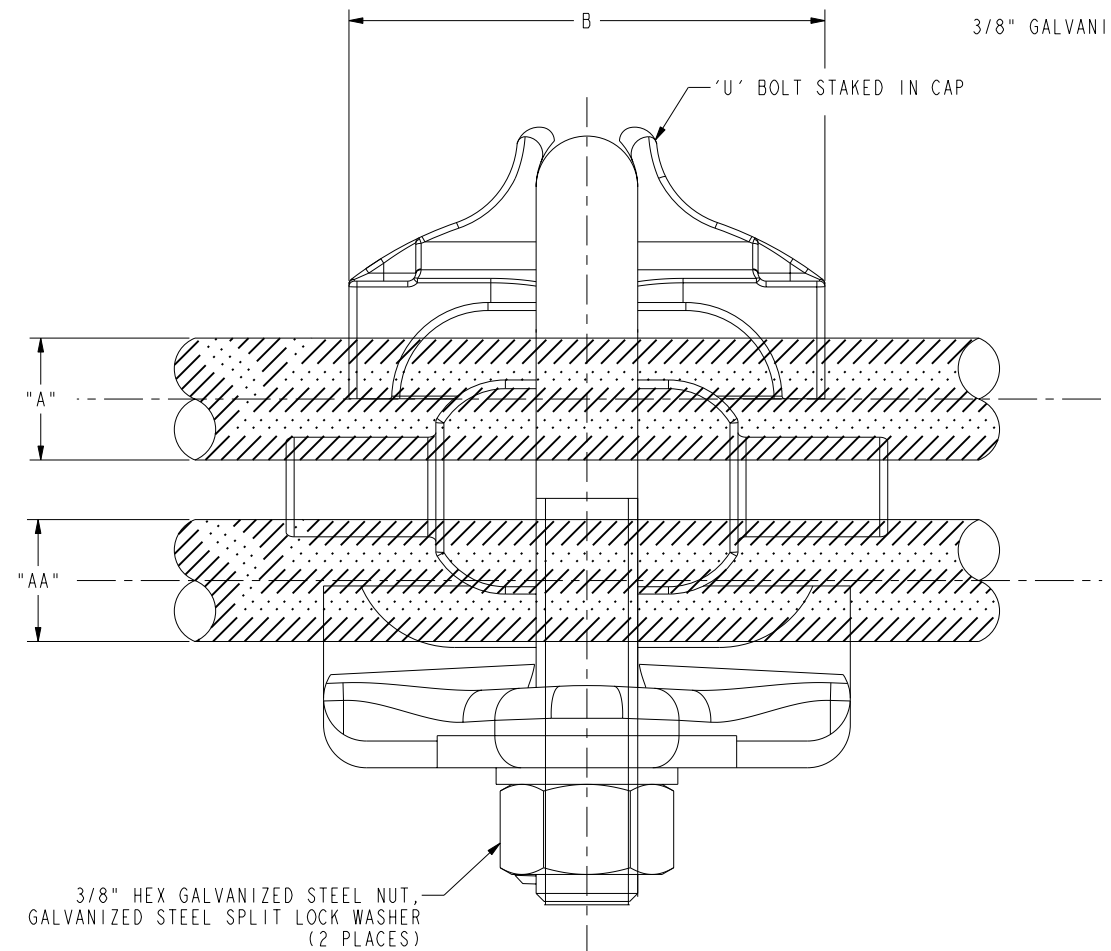


DRAWING NO.
SC039787-01

ITEM NO.	CATALOG NO.	CABLE RUN "A"				CABLE TAP "AA"				DIMENSIONS IN [mm]			WRENCH SIZE (CROSS-FLATS)	TORQUE IN-LB [Nm]
		ACSR		ALUM		ACSR		ALUM		B	H	W		
		MIN	MAX	MIN	MAX	MIN	MAX	MIN	MAX					
135700	UW2R	#6 (6-1 STR.) (.198 [5] DIA.)	#2 (7-1 STR.) (.325 [8] DIA.)	#6 STR (.184 [5] DIA.)	#2 STR (.292 [7] DIA.)	#6 (6-1 STR.) (.198 [5] DIA.)	#2 (7-1 STR.) (.325 [8] DIA.)	#6 STR (.184 [5] DIA.)	#2 STR (.292 [7] DIA.)	1.50 [38]	2.58 [66]	1.82 [46]	9/16 [14]	240 [27]
135800	UW25R	#6 (6-1 STR.) (.198 [5] DIA.)	1/0 (6-1 STR.) (.398 [10] DIA.)	#6 STR (.184 [5] DIA.)	2/0 STR (.419 [11] DIA.)	#6 (6-1 STR.) (.198 [5] DIA.)	1/0 (6-1 STR.) (.398 [10] DIA.)	#6 STR (.184 [5] DIA.)	2/0 STR (.419 [11] DIA.)	1.78 [45]	2.83 [72]	1.98 [50]		



3D VIEW



DEAD END INSTALLATION

NOTES:

- MATERIAL:
CAST ALUMINUM ALLOY
- CONTACT SURFACES PROTECTED BY FACTORY COATING OF A CORROSION INHIBITING COMPOUND.
- WHEN USING AS A TAP CONNECTOR, SCRATCH BRUSH BOTH CONDUCTORS, THEN APPLY PENETROX "A" TO CONTACT SURFACES OF CONNECTOR AND TO CONDUCTOR, PENETROX "A" MAY BE PURCHASED FROM BURNDY CORP.
- TYPICAL DEAD-END HOLDING STRENGTH:
ALL ALUMINUM CONDUCTOR (AAC) ONE CONNECTOR WILL HOLD CABLE TO 95% OF RATED BREAKING STRENGTH
ACSR-ONE CONNECTOR WILL HOLD CABLE TO 80% OF RATED BREAKING STRENGTH
EXCEPT MAXIMUM ACSR WHICH WILL BE HELD TO 70% OF RATED BREAKING STRENGTH.
TWO CONNECTORS WILL HOLD CABLES TO 100% OF RATED BREAKING STRENGTH.

REFERENCE:
FC38770, FC38643

TO ORDER BURNDY® PRODUCTS CALL		CLIP-IT	
UNITED STATES 1-800-346-4175 (LONDONDERRY, NH)		ITEM NO: SEE TABLE	CAT. NO: SEE TABLE
CANADA: 1-800-361-6975 (QUEBEC) 1-800-387-6487 (ALL OTHER PROVINCES)		DRAWN BY: M KATHIR 10/01/13	CHECKER: W ZAHLMAN 07/29/13
FOR PRODUCT INFO: http://www.burndy.com		DSN APPVL: W ZAHLMAN 07/29/13	MFG APPVL: -- --
		QA APPVL: J BRODEUR 08/01/13	MKT APPVL: J HALL 07/29/13
		PROJ #:	SCALE: 1:1
		SIZE: D	DRAWING NO: SC039787-01
		DOCUMENT TYPE: Sales	REV: A
		REL LEVEL: Released	SHEET 1 OF 1

REV	DATE	DESCRIPTION	ECO	BY	C'H'K'
A	07/24/2013 00:00:00 AM	ADDING TORQUE AND WRENCH INFORMATION. UPDATE DRAWING TO CURRENT SPEC	32588	MK	NJS

REV: PE0200