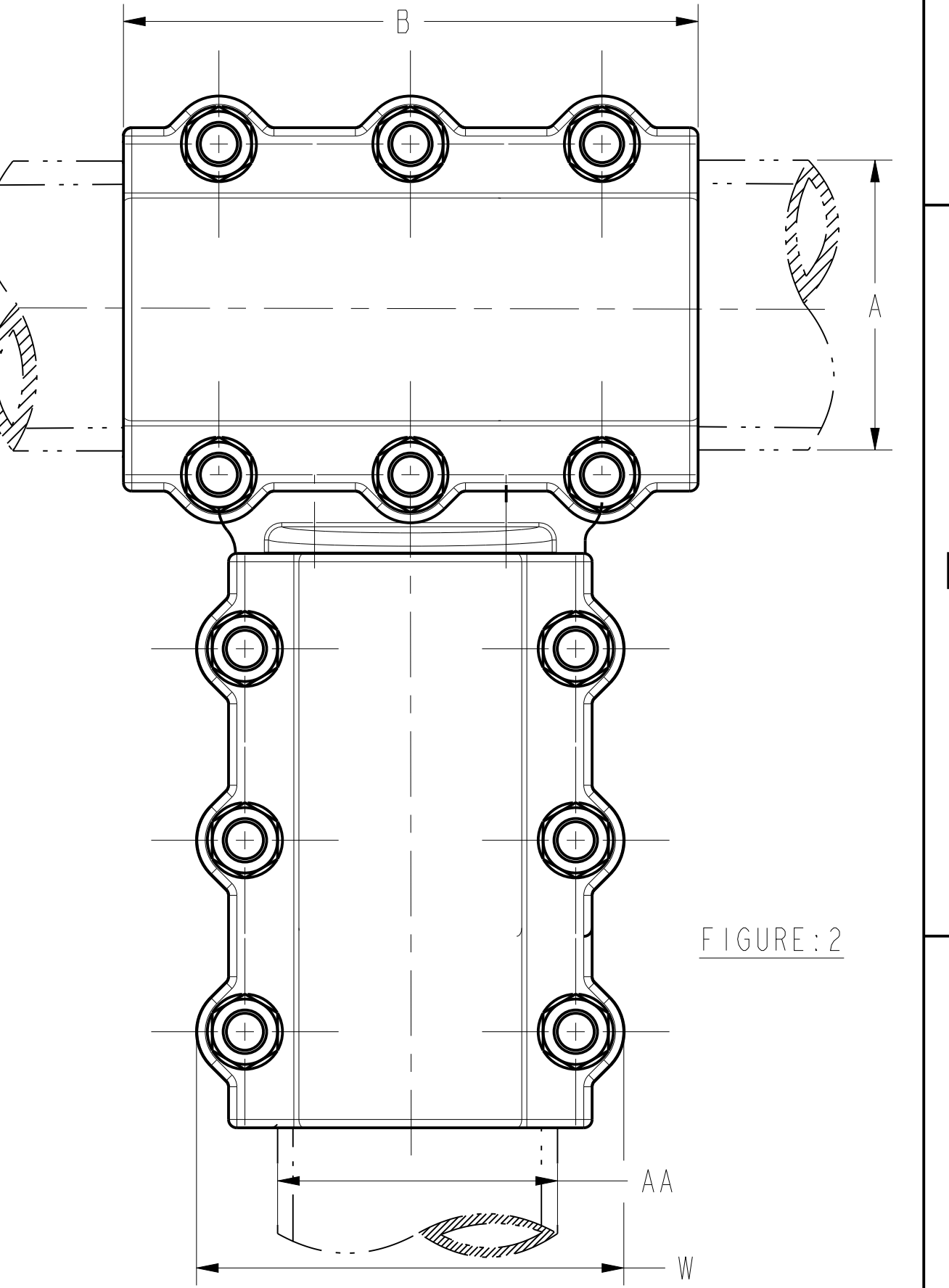
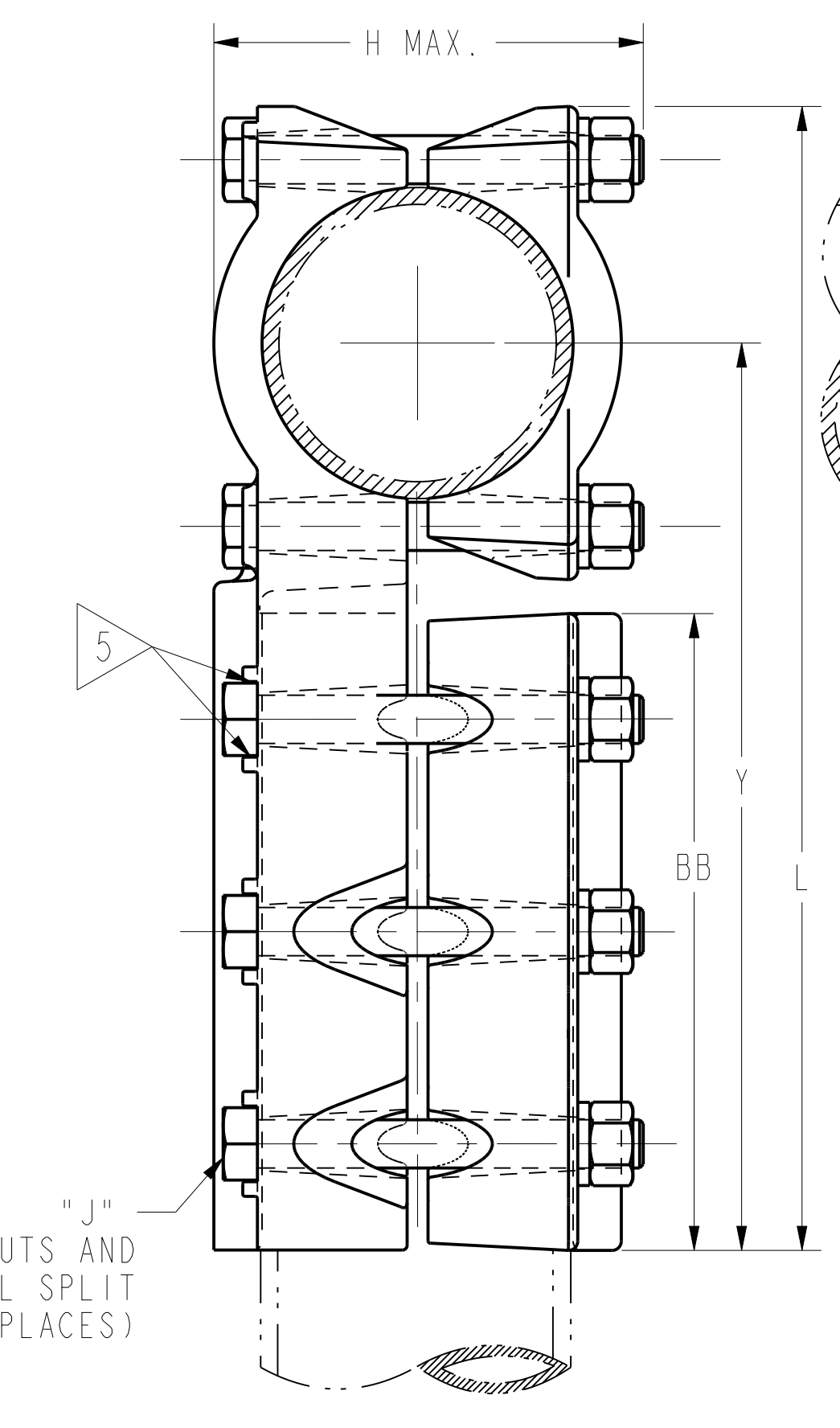
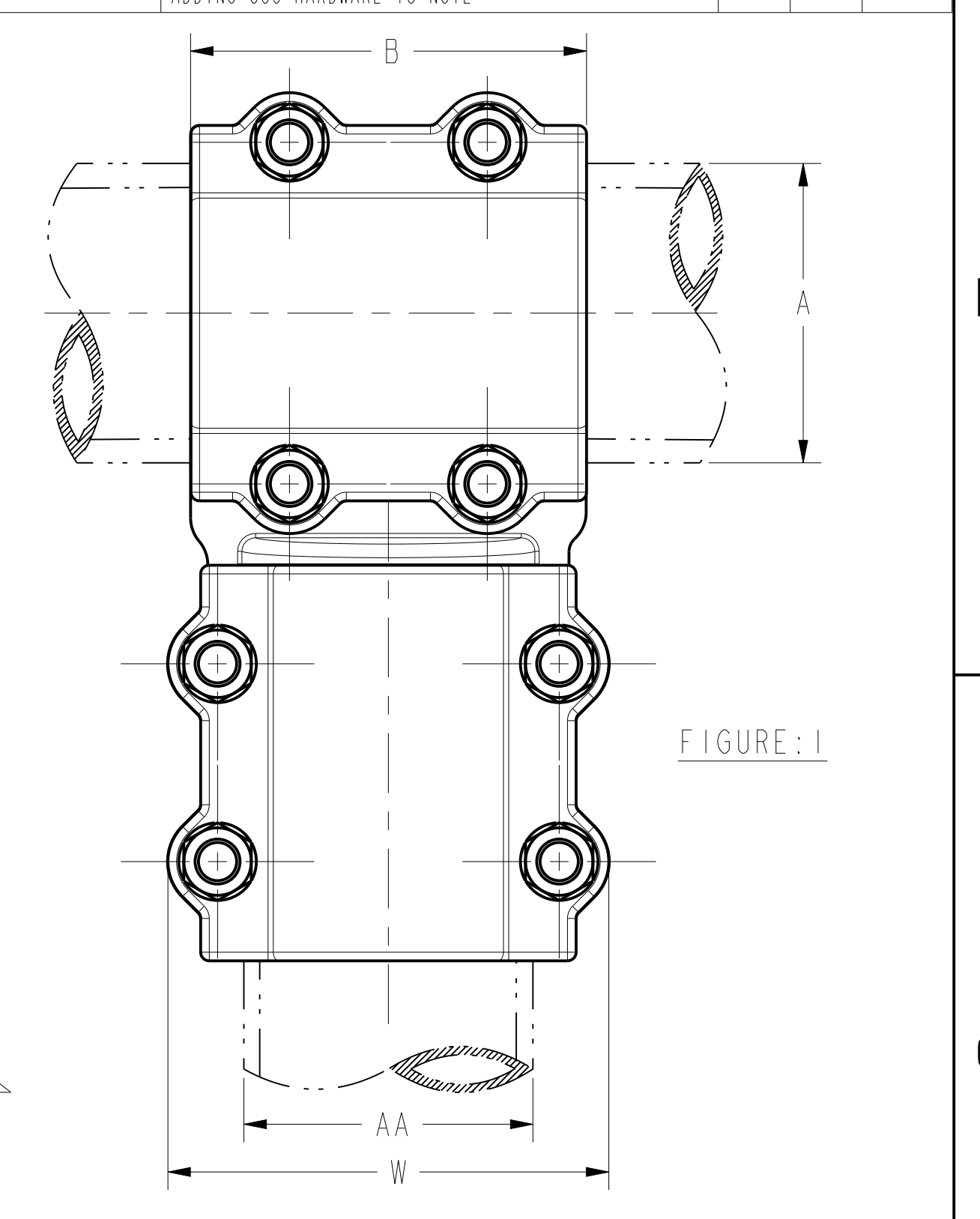
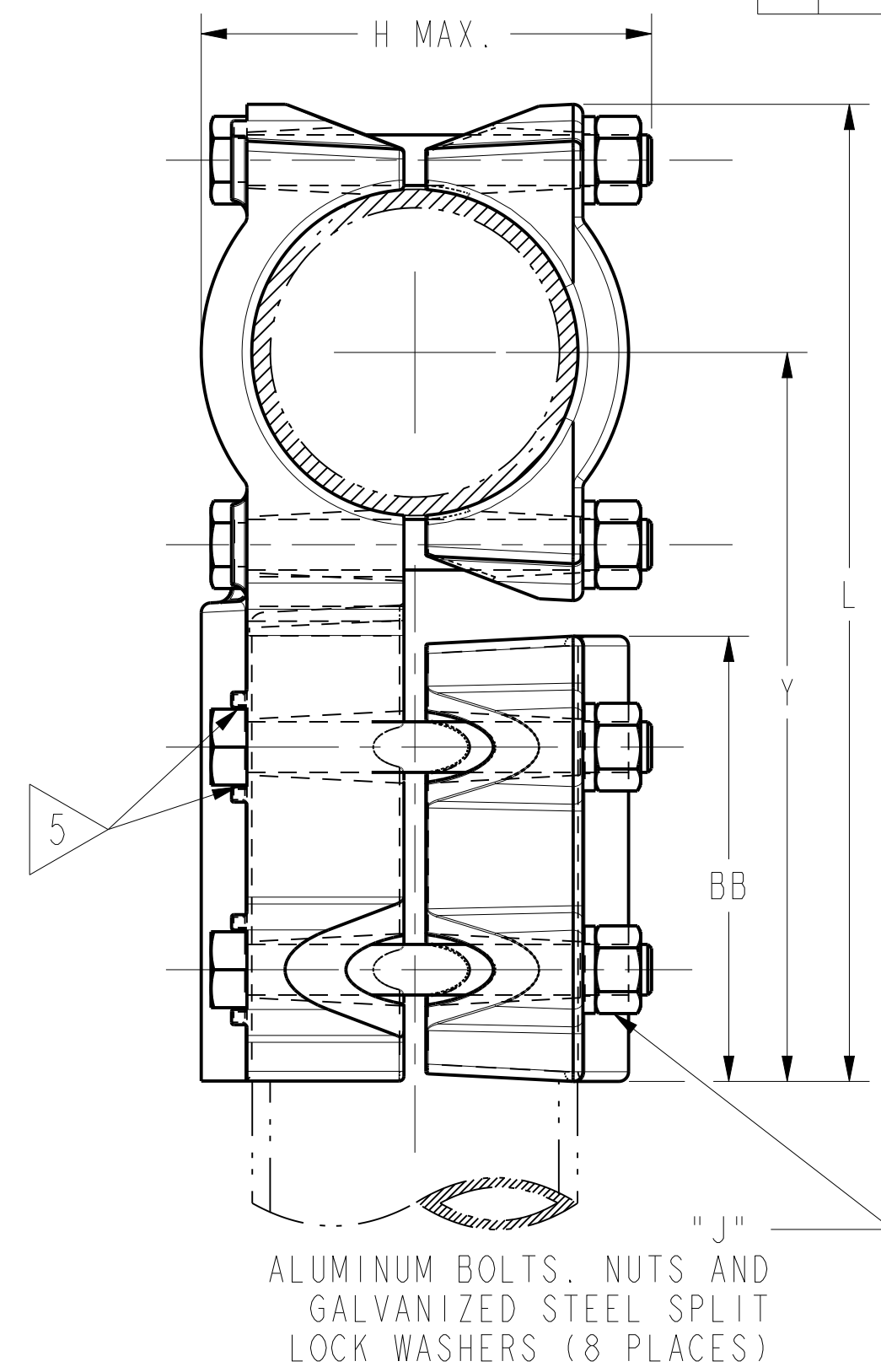


ALUMINUM IPS		CATALOG NUMBER	TUBE DIA.		FIG. NO.	DIMENSIONS						
RUN	TAP		A	AA		B	BB	H MAX.	J	L	W	Y
1/2"	1/2"	NNT13A13A	.840 [21]	.840 [21]	1	3.00 [76]	3.00 [76]	2.88 [73]	1/2-13	5.84 [148]	2.59 [66]	4.56 [116]
3/4"	3/4"	NNT14A14A	1.050 [27]	1.050 [27]	1	3.25 [83]	3.25 [83]	3.13 [79]	1/2-13	6.31 [160]	2.81 [71]	4.94 [125]
1"	3/4"	NNT15A14A	1.315 [33]	1.050 [27]	1	3.50 [89]	3.25 [83]	3.38 [86]	1/2-13	6.56 [167]	2.81 [71]	5.06 [129]
1"	1"	NNT15A15A	1.315 [33]	1.315 [33]	1	3.50 [89]	3.50 [89]	3.38 [86]	1/2-13	6.81 [173]	3.06 [78]	5.31 [135]
1 1/4"	3/4"	NNT16A14A	1.660 [42]	1.050 [27]	1	3.75 [95]	3.25 [83]	3.38 [86]	1/2-13	6.94 [176]	2.81 [71]	5.25 [133]
1 1/4"	1"	NNT16A15A	1.660 [42]	1.315 [33]	1	3.75 [95]	3.50 [89]	3.38 [86]	1/2-13	7.19 [183]	3.06 [78]	5.25 [140]
1 1/4"	1 1/4"	NNT16A16A	1.660 [42]	1.660 [42]	1	3.75 [95]	3.75 [95]	3.38 [86]	1/2-13	7.44 [189]	3.44 [87]	5.75 [146]
1 1/2"	3/4"	NNT17A14A	1.900 [48]	1.050 [27]	1	4.00 [102]	3.25 [83]	3.88 [98]	1/2-13	7.19 [183]	2.81 [71]	5.38 [137]
1 1/2"	1"	NNT17A15A	1.900 [48]	1.315 [33]	1	4.00 [102]	3.50 [89]	3.88 [98]	1/2-13	7.38 [187]	3.06 [78]	5.44 [138]
1 1/2"	1 1/4"	NNT17A16A	1.900 [48]	1.660 [42]	1	4.00 [102]	3.75 [95]	3.88 [98]	1/2-13	7.69 [195]	3.44 [87]	5.88 [149]
1 1/2"	1 1/2"	NNT17A17A	1.900 [48]	1.900 [48]	1	4.00 [102]	4.00 [102]	3.88 [98]	1/2-13	7.88 [200]	3.64 [92]	6.06 [154]
2"	3/4"	NNT18A14A	2.375 [60]	1.050 [27]	1	4.00 [102]	3.25 [83]	4.38 [111]	1/2-13	7.69 [195]	2.81 [71]	5.63 [143]
2"	1"	NNT18A15A	2.375 [60]	1.315 [33]	1	4.00 [102]	3.50 [89]	4.38 [111]	1/2-13	7.94 [202]	3.06 [78]	5.88 [149]
2"	1 1/4"	NNT18A16A	2.375 [60]	1.660 [42]	1	4.00 [102]	3.75 [95]	4.38 [111]	1/2-13	8.06 [205]	3.44 [87]	6.13 [156]
2"	1 1/2"	NNT18A17A	2.375 [60]	1.900 [48]	1	4.00 [102]	4.00 [102]	4.38 [111]	1/2-13	8.44 [214]	3.64 [92]	6.75 [171]
2"	2"	NNT18A18A	2.375 [60]	2.375 [60]	1	4.25 [108]	4.25 [108]	4.44 [113]	5/8-11	9.06 [230]	4.50 [114]	6.81 [173]
2 1/2"	3/4"	NNT19A14A	2.875 [73]	1.050 [27]	1	4.00 [102]	3.25 [83]	4.38 [111]	1/2-13	8.06 [205]	2.81 [71]	5.88 [149]
2 1/2"	1"	NNT19A15A	2.875 [73]	1.315 [33]	1	4.00 [102]	3.50 [89]	4.38 [111]	1/2-13	8.44 [214]	3.06 [78]	6.13 [156]
2 1/2"	1 1/4"	NNT19A16A	2.875 [73]	1.660 [42]	1	4.00 [102]	3.75 [95]	4.38 [111]	1/2-13	8.69 [221]	3.44 [87]	6.38 [162]
2 1/2"	1 1/2"	NNT19A17A	2.875 [73]	1.900 [48]	1	4.00 [102]	4.00 [102]	4.38 [111]	1/2-13	8.94 [227]	3.64 [92]	6.63 [168]
2 1/2"	2"	NNT19A18A	2.875 [73]	2.375 [60]	1	4.50 [114]	4.25 [108]	4.94 [125]	5/8-11	9.13 [232]	4.50 [114]	6.88 [175]
2 1/2"	2 1/2"	NNT19A19A	2.875 [73]	2.875 [73]	1	4.50 [114]	4.50 [114]	4.94 [125]	5/8-11	9.38 [238]	5.00 [127]	7.13 [181]
3"	3/4"	NNT20A14A	3.500 [89]	1.050 [27]	1	4.00 [102]	3.25 [83]	5.00 [127]	1/2-13	8.69 [221]	2.81 [71]	6.19 [157]
3"	1"	NNT20A15A	3.500 [89]	1.315 [33]	1	4.00 [102]	3.50 [89]	5.00 [127]	1/2-13	9.06 [230]	3.06 [78]	6.44 [164]
3"	1 1/4"	NNT20A16A	3.500 [89]	1.660 [42]	1	4.00 [102]	3.75 [95]	5.00 [127]	1/2-13	9.19 [233]	3.44 [87]	6.69 [170]
3"	1 1/2"	NNT20A17A	3.500 [89]	1.900 [48]	1	4.00 [102]	4.00 [102]	5.00 [127]	1/2-13	9.19 [233]	3.64 [92]	6.94 [176]
3"	2"	NNT20A18A	3.500 [89]	2.375 [60]	1	5.00 [127]	4.25 [108]	5.44 [138]	5/8-11	10.19 [259]	4.50 [114]	7.75 [197]
3"	2 1/2"	NNT20A19A	3.500 [89]	2.875 [73]	1	5.00 [127]	4.50 [114]	5.44 [138]	5/8-11	10.44 [265]	5.00 [127]	7.63 [194]
3"	3"	NNT20A20A	3.500 [89]	3.500 [89]	1	5.00 [127]	5.00 [127]	5.44 [138]	5/8-11	10.94 [278]	5.63 [143]	8.13 [206]
3 1/2"	3/4"	NNT21A14A	4.000 [102]	1.050 [27]	1	4.00 [102]	3.25 [83]	5.19 [132]	1/2-13	9.38 [238]	2.81 [71]	6.50 [165]
3 1/2"	1"	NNT21A15A	4.000 [102]	1.315 [33]	1	4.00 [102]	3.50 [89]	5.19 [132]	1/2-13	9.38 [238]	3.06 [78]	6.75 [171]
3 1/2"	1 1/4"	NNT21A16A	4.000 [102]	1.660 [42]	1	4.00 [102]	3.75 [95]	5.19 [132]	1/2-13	9.88 [251]	3.44 [87]	7.25 [184]
3 1/2"	1 1/2"	NNT21A17A	4.000 [102]	1.900 [48]	1	4.00 [102]	4.00 [102]	5.19 [132]	1/2-13	10.13 [257]	3.64 [92]	7.25 [184]
3 1/2"	2"	NNT21A18A	4.000 [102]	2.375 [60]	1	5.50 [140]	4.25 [108]	5.56 [141]	5/8-11	10.88 [276]	4.50 [114]	7.81 [198]
3 1/2"	2 1/2"	NNT21A19A	4.000 [102]	2.875 [73]	1	5.50 [140]	4.50 [114]	5.56 [141]	5/8-11	11.06 [281]	5.00 [127]	8.00 [203]
3 1/2"	3	NNT21A20A	4.000 [102]	3.500 [89]	1	5.50 [140]	5.00 [127]	5.56 [141]	5/8-11	11.06 [281]	5.63 [143]	8.50 [216]
3 1/2"	3 1/2"	NNT21A21A	4.000 [102]	4.000 [102]	1	5.50 [140]	5.50 [140]	5.56 [141]	5/8-11	12.06 [306]	6.19 [157]	9.00 [229]

REV	DATE	DESCRIPTION	ECO	BY	C'K'K.
C	09/01/2015 00:00:00 AM	FOCUS REQUEST FPN1508073 ADDING GS5 HARDWARE TO NOTE	41461	AS	MB



NOTES:

- MATERIAL:
BODY & CAP: CAST ALUMINUM ALLOY
 - NOMINAL BOLT INSTALLATION TORQUE:
300 LB-IN [35 Nm] FOR 1/2" HEX. ALUMINUM HARDWARE
480 LB-IN [55 Nm] FOR 5/8" HEX. ALUMINUM HARDWARE.
480 LB-IN [55 Nm] FOR 1/2" HEX. GALVANIZED STEEL & STAINLESS STEEL HARDWARE.
660 LB-IN [75 Nm] FOR 5/8" HEX. GALVANIZED STEEL & STAINLESS STEEL HARDWARE.
 - DIMENSIONS IN BRACKETS [] DENOTES METRIC UNITS [SI UNITS] AND ARE ROUNDED TO THE NEAREST WHOLE NUMBER. UNLESS OTHERWISE SPECIFIED THESE UNITS SHALL BE USED FOR REFERENCE ONLY.
 - PENETROX® NOTE: SCRATCH BRUSH CONNECTOR CONTACT SURFACE DRY, THEN APPLY PENETROX® A. PENETROX® CAN BE PURCHASED FROM BURNDY LLC, USA. INC. IN CANS OR PLASTIC SQUEEZE BOTTLES.
- 5 HEX BOLTS CAPTURED TO PREVENT TURNING DURING INSTALLATION.
- 6 OPTIONAL HARDWARE VARIATIONS ARE AVAILABLE BY ADDING THE FOLLOWING SUFFIX TO THE CATALOG NUMBER.
EXAMPLE: NNT21A21AGS
GS = GALVANIZED STEEL
SS = STAINLESS STEEL
GS5 = GRADE 5 GALVANIZED STEEL

SUPERSEDES:
SD25954-11, SD39349-1

TO ORDER BURNDY® PRODUCTS CALL		ITEM NO: --	
UNITED STATES 1-800-346-4175 (LONDONDERRY, NH)		CAT. NO: NNT--A--A (TABLE)	
CANADA: 1-800-361-6975 (QUEBEC) 1-800-387-6487 (ALL OTHER PROVINCES)		DRAWN BY: V VINOCH 08/14/10	
FOR PRODUCT INFO: http://www.burndy.com		CHECKER: NJ SUDHAKAR 08/14/10	
		DSN APPVL: R LAVOIE 08/21/13	
		MFG APPVL: T WAWRZYNIAK 08/14/13	
		GA APPVL: J HILLMAN 08/19/13	
		MKT APPVL: V TORRES 08/27/13	
		SCALE: 3:400	
		PROD FAM: SUBSTATION	
		DRAWING NO	
		REV	
		PROJECT #: --	
		SIZE	
		D	
		DOCUMENT TYPE: Sales	
		SC064838	
		SHEET 1 OF 2	
		REL LEVEL: Released	



REV: PFC200

ALUMINUM IPS	CATALOG NUMBER	TUBE DIA.		FIG. NO.	DIMENSIONS							
		A	AA		B	BB	H MAX.	J	L	W	Y	
4"	3/4"	NNT22A14A	4.500 [114]	1.050 [27]	1	4.00 [102]	3.25 [83]	5.75 [146]	1/2-13	9.88 [251]	2.81 [71]	6.75 [171]
4"	1"	NNT22A15A	4.500 [114]	1.315 [33]	1	4.00 [102]	3.50 [89]	5.75 [146]	1/2-13	10.13 [257]	3.06 [78]	7.00 [178]
4"	1 1/4"	NNT22A16A	4.500 [114]	1.660 [42]	1	4.00 [102]	3.75 [95]	5.75 [146]	1/2-13	11.38 [289]	3.06 [78]	7.25 [184]
4"	1 1/2"	NNT22A17A	4.500 [114]	1.900 [48]	1	4.00 [102]	4.00 [102]	5.75 [146]	1/2-13	10.38 [264]	3.64 [92]	7.13 [181]
4"	2"	NNT22A18A	4.500 [114]	2.375 [60]	1	6.00 [152]	4.25 [108]	6.19 [157]	5/8-11	10.88 [276]	4.50 [114]	7.75 [197]
4"	2 1/2"	NNT22A19A	4.500 [114]	2.875 [73]	1	6.00 [152]	4.50 [114]	6.19 [157]	5/8-11	11.13 [283]	5.00 [127]	8.00 [203]
4"	3"	NNT22A20A	4.500 [114]	3.500 [89]	1	6.00 [152]	5.00 [127]	6.19 [157]	5/8-11	11.63 [295]	5.13 [130]	8.50 [216]
4"	3 1/2"	NNT22A21A	4.500 [114]	4.000 [102]	1	6.00 [152]	5.50 [140]	6.19 [157]	5/8-11	12.13 [308]	6.19 [157]	9.00 [229]
4"	4"	NNT22A22A	4.500 [114]	4.500 [114]	1	6.00 [152]	6.00 [152]	6.19 [157]	5/8-11	12.63 [321]	6.63 [168]	9.50 [241]
4 1/2"	2"	NNT23A18A	5.000 [127]	2.375 [60]	1	6.00 [152]	4.25 [108]	6.31 [160]	5/8-11	11.75 [298]	4.50 [114]	8.19 [208]
4 1/2"	2 1/2"	NNT23A19A	5.000 [127]	2.875 [73]	1	6.00 [152]	4.50 [114]	6.31 [160]	5/8-11	12.00 [305]	5.00 [127]	8.44 [214]
4 1/2"	3"	NNT23A20A	5.000 [127]	3.500 [89]	1	6.00 [152]	5.00 [127]	6.31 [160]	5/8-11	12.50 [318]	5.13 [130]	8.94 [227]
4 1/2"	3 1/2"	NNT23A21A	5.000 [127]	4.000 [102]	1	6.00 [152]	5.50 [140]	6.31 [160]	5/8-11	13.00 [330]	6.19 [157]	9.44 [240]
4 1/2"	4"	NNT23A22A	5.000 [127]	4.500 [114]	1	6.00 [152]	6.00 [152]	6.31 [160]	5/8-11	13.50 [343]	6.63 [168]	9.81 [249]
4 1/2"	4 1/2"	NNT23A23A	5.000 [127]	5.000 [127]	2	6.50 [165]	6.50 [165]	6.31 [160]	5/8-11	14.00 [356]	7.19 [183]	10.19 [259]
5"	2"	NNT24A18A	5.563 [141]	2.375 [60]	1	6.00 [152]	4.25 [108]	6.94 [176]	5/8-11	12.19 [310]	4.50 [114]	8.50 [216]
5"	2 1/2"	NNT24A19A	5.563 [141]	2.875 [73]	1	6.00 [152]	4.50 [114]	6.94 [176]	5/8-11	12.56 [319]	5.00 [127]	8.75 [222]
5"	3"	NNT24A20A	5.563 [141]	3.500 [89]	1	6.00 [152]	5.00 [127]	6.94 [176]	5/8-11	13.06 [332]	5.13 [130]	9.25 [235]
5"	3 1/2"	NNT24A21A	5.563 [141]	4.000 [102]	1	6.00 [152]	5.50 [140]	6.94 [176]	5/8-11	13.56 [344]	6.19 [157]	9.75 [248]
5"	4"	NNT24A22A	5.563 [141]	4.500 [114]	1	6.00 [152]	6.00 [152]	6.94 [176]	5/8-11	14.06 [357]	6.63 [168]	10.25 [260]
5"	4 1/2"	NNT24A23A	5.563 [141]	5.000 [127]	2	7.00 [178]	6.50 [165]	6.94 [176]	5/8-11	14.56 [370]	7.19 [183]	10.75 [273]
5"	5"	NNT24A24A	5.563 [141]	5.563 [141]	2	7.00 [178]	7.00 [178]	6.94 [176]	5/8-11	15.06 [383]	7.69 [195]	11.25 [286]
6"	2"	NNT86A18A	6.625 [168]	2.375 [60]	1	6.00 [152]	4.25 [108]	8.00 [203]	5/8-11	15.38 [391]	4.50 [114]	9.00 [229]
6"	2 1/2"	NNT86A19A	6.625 [168]	2.875 [73]	1	6.00 [152]	4.50 [114]	8.00 [203]	5/8-11	13.63 [346]	5.00 [127]	9.25 [235]
6"	3"	NNT86A20A	6.625 [168]	3.500 [89]	1	6.00 [152]	5.00 [127]	8.00 [203]	5/8-11	14.13 [359]	5.13 [130]	9.75 [248]
6"	3 1/2"	NNT86A21A	6.625 [168]	4.000 [102]	1	6.00 [152]	5.50 [140]	8.00 [203]	5/8-11	14.63 [371]	6.19 [157]	10.25 [260]
6"	4"	NNT86A22A	6.625 [168]	4.500 [114]	1	6.00 [152]	6.00 [152]	8.00 [203]	5/8-11	15.13 [384]	6.63 [168]	10.75 [273]
6"	4 1/2"	NNT86A23A	6.625 [168]	5.000 [127]	2	8.00 [203]	6.50 [165]	8.00 [203]	5/8-11	15.63 [397]	7.19 [183]	11.25 [286]
6"	5"	NNT86A24A	6.625 [168]	5.563 [141]	2	8.00 [203]	7.00 [178]	8.00 [203]	5/8-11	16.13 [410]	7.69 [195]	11.75 [298]
6"	6"	NNT86A86A	6.625 [168]	6.625 [168]	2	8.00 [203]	8.00 [203]	8.00 [203]	5/8-11	17.13 [435]	8.25 [210]	12.25 [311]

REV	DATE	DESCRIPTION	ECO	BY	CHK.
C	09/01/2015 00:00:00 AM	FOCUS REQUEST FPN1508073 ADDING G55 HARDWARE TO NOTE	41461	AS	MB

D

D

C

C

B

B

A

A

REV: PFC200

NOTES:
SEE SHEET NO. 1

TO ORDER BURNDY® PRODUCTS CALL		T CONNECTOR	
UNITED STATES 1-800-346-4175 (LONDONDERRY, NH)		ITEM NO: --	
CANADA: 1-800-361-6975 (QUEBEC) 1-800-387-6487 (ALL OTHER PROVINCES)		CAT. NO: NNT--A--A (TABLE)	
FOR PRODUCT INFO: http://www.burndy.com		DRAWN BY: V VINOCH 08/14/10	
		CHECKER: NJ SUDHAKAR 08/14/10	
		DSN APPVL: R LAVOIE 08/21/13	
		MFG APPVL: T WAWRZYNIAK 08/14/13	
		QA APPVL: J HILLMAN 08/19/13	
		MKT APPVL: V TORRES 08/27/13	
		SCALE: 3:400	
		PROD FAM: SUBSTATION	
		DRAWING NO	
		REV	
		PROJECT #: --	
		SIZE	
		D	
		SC064838	
		DOCUMENT TYPE: Sales	
		SHEET 2 OF 2	
		REL LEVEL: Released	

