

ITEM NO.	CATALOG NO.	CONDUCTOR RANGE COPPER CABLE		B	C	H	J DIA.	K DIA.	L	N	T	FIG. NO.	
		MIN.	MAX.										
390350	KA25	# 4 STR. (.232 DIA.)	1/0 STR. (.373 DIA.)	0.69	0.75	0.94	1/2" - 20 UNF -2A	0.42	1.69	0.38	0.13	1	1
390485	KA28	# 1 STR. (.332 DIA.)	4/0 STR. (.528 DIA.)	0.81	0.94	1.25	5/8" - 18 UNF-2A	0.42	1.94	0.44	0.19	1	1
390585	KA34	4/0 STR. (.528 DIA.)	500 Kcmil (.814 DIA.)	1.12	1.38	2.09	13/16" - 16 UN-2A	0.56	2.55	0.56	0.28	1	2
390039	KA25TN	# 4 STR. (.232 DIA.)	1/0 STR. (.373 DIA.)	0.69	0.75	0.94	1/2" -20 UNF -2A	0.42	1.69	0.38	0.13	1	1
390022	KA28TN	# 1 STR. (.332 DIA.)	4/0 STR. (.528 DIA.)	0.81	0.97	1.25	5/8" - 18 UNF-2A	0.42	1.94	0.44	0.19	1	1
390032	KA34TN	4/0 STR. (.528 DIA.)	500 Kcmil (.814 DIA.)	1.12	1.38	2.09	13/16" - 16 UN-2A	0.56	2.55	0.56	0.28	1	2
390060	KA252TC38	# 4 STR. (.232 DIA.)	1/0 STR. (.373 DIA.)	0.69	0.75	0.94	1/2" - 20 UNF-2A	0.42	2.69	0.38	0.13	2	3
50001150	KA28TNSS	# 1 STR. (.332 DIA.)	4/0 STR. (.528 DIA.)	0.81	0.97	1.25	5/8" - 18 UNF-2A	0.42	1.94	0.44	0.19	1	6

REV	DATE	DESCRIPTION	ECO	BY	C'H'K.
E	06/22/2012	CORRECT THE MAX CONDUCTOR SIZE FOR THE KA28TN AND KA28TNSS.	27836	TS	MA

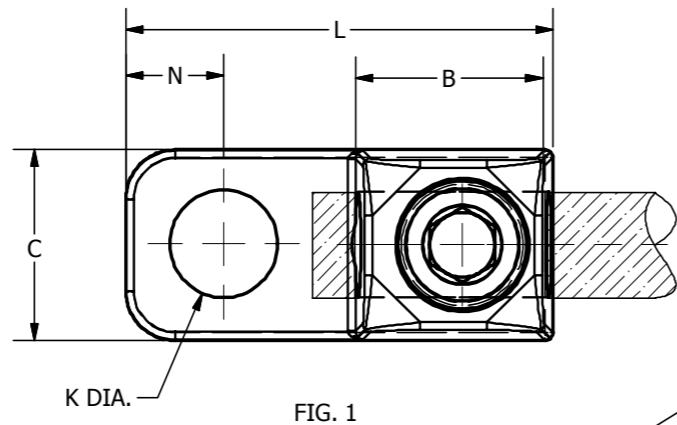


FIG. 1

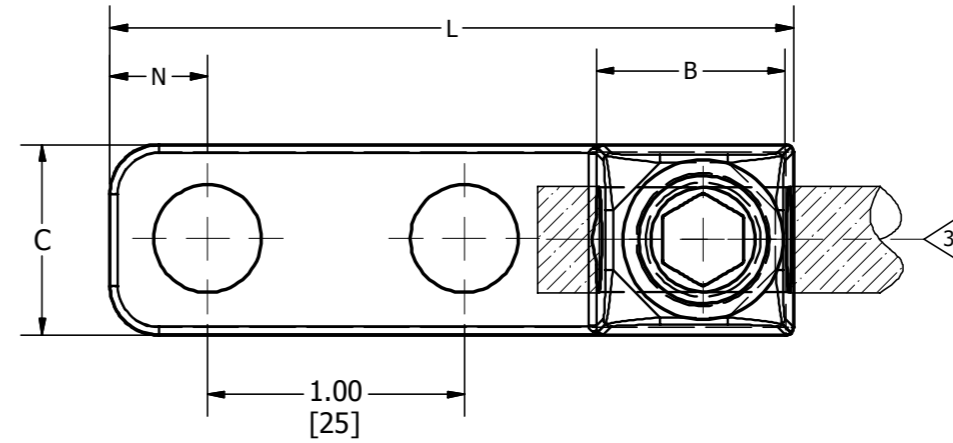
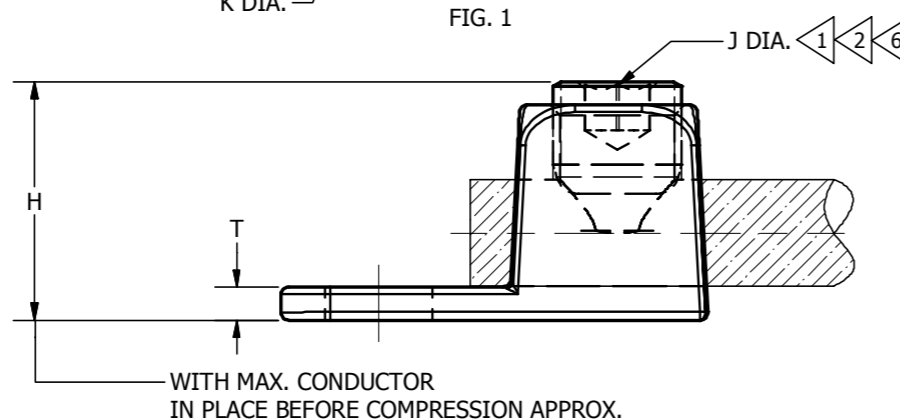


FIG. 2



NOTES:

- 1 SUPPLIED WITH TIN PLATED STEEL SOCKET SET SCREW.
- 2 SUPPLIED WITH TIN PLATED BRASS SOCKET SET SCREW.
- 3 TWO HOLE PAD WITH TIN PLATED BRASS SOCKET SET SCREW.
- 4. MATERIAL: CAST COPPER ALLOY
- 5. DIMENSIONS IN BRACKETS [] ARE IN MILLIMETERS ROUNDED OFF TO THE NEAREST MILLIMETER, UNLESS OTHERWISE SPECIFIED AND ARE FOR REFERENCE ONLY.
- 6 SUPPLIED WITH STAINLESS STEEL SOCKET SET SCREW.

TO ORDER BURNDY PRODUCTS CALL UNITED STATES 1-800-346-4175 (LONDONDERRY, NH) CANADA: 1-800-361-6975 (QUEBEC) 1-800-387-6487 (ALL OTHER PROVINCES) FOR PRODUCT INFO: http://www.burndy.com	TERMINAL	
	ITEM NO: --	
	CAT. NO: KA--, KA--TN (TABLE), KA28TNSS	
	DRAWN BY: S.D.C. 8/25/1972	
	CHECKER: J.P.S. 8/29/1972	
DSN APRVL: J.P.S. 8/31/1972		
MFG APRVL:		
QA APRVL:		
MKT APRVL:		
PROD FAM: COMMON PARTS	DRAWING NO	REV
PROJECT #:	SIZE	SC74265-01
DOCUMENT TYPE: SALES	B	E
REL LEVEL: Released		SHEET 1 OF 1