

DRAWING NO.
SD023314-01

REV	DATE	DESCRIPTION	ECO	BY	C'H'K.
B	09/24/2013 00:00:00 AM	ALL NEW 1074-N1 CATALOG NUMBERS SHOULD BE REMOVED FROM SHEETS AND ADDED TO SB. 023314-01.	33408	BM	NJS

ITEM NO.	CAT. NO.	CONDUCTOR RANGE (COPPER) A	FIG. NO.	CONDUCTOR RANGE (COPPER)										MARKING
				B	C	CF	D	H	J	L	T	U	W	
50032815	Q2A4C2N	8 STR. (.146) - 4 STR. (.232)	1	.75 [19]	1.62 [41]	.56 [14]	3.12 [79]	.75 [19]	.469-20	3.94 [100]	.19 [5]	1.03 [26]	1.69 [43]	BURNDY Q2A4C2N 8 - 4 STR
358214	Q2A1C2N	4 STR. (.232) - 1 STR. (.330)	1	.94 [24]	1.62 [41]	.69 [18]	3.12 [79]	1.06 [27]	.500-20	4.13 [105]	.22 [6]	1.06 [27]	1.81 [46]	BURNDY Q2A4C2N 4 - 1 STR
358124	Q2A262N	1/0 STR. (.373) - 2/0 STR. (.418)	1	.94 [24]	1.62 [41]	.69 [18]	3.12 [79]	1.19 [30]	.500-20	4.19 [106]	.22 [6]	1.06 [27]	1.94 [49]	BURNDY Q2A262N 1/0 - 2/0 STR
358132	Q2A282N	3/0 STR. (.470) - 4/0 STR. (.528)	1	1.06 [27]	1.88 [48]	.69 [18]	3.09 [79]	1.31 [33]	.500-20	4.31 [110]	.25 [6]	1.06 [27]	2.12 [54]	BURNDY Q2A282N 3/0 - 4/0 STR
358148	Q2A284N	3/0 STR. (.470) - 4/0 STR. (.528)	2	1.06 [27]	3.00 [76]	.69 [18]	3.09 [79]	1.31 [33]	.500-20	4.31 [110]	.25 [6]	1.06 [27]	2.12 [54]	BURNDY Q2A284N 3/0 - 4/0 STR
358156	Q2A312N	250 KCMIL (.575) - 350 KCMIL (.681)	1	1.19 [30]	2.38 [60]	.75 [19]	3.09 [79]	1.69 [43]	.562-18	4.44 [113]	.31 [8]	1.38 [35]	2.69 [68]	BURNDY Q2A312N 250 - 350 Kcmil
353164	Q2A314N	250 KCMIL (.575) - 350 KCMIL (.681)	2	1.19 [30]	3.00 [76]	.75 [19]	3.09 [79]	1.69 [43]	.562-18	4.44 [113]	.31 [8]	1.38 [35]	2.69 [68]	BURNDY Q2A314N 250 - 350 Kcmil
358196	Q2A342N	400 KCMIL (.728) - 500 KCMIL (.814)	1	1.38 [35]	2.50 [64]	.81 [21]	3.09 [79]	2.00 [51]	.625-18	4.69 [119]	.38 [10]	1.56 [40]	3.00 [76]	BURNDY Q2A342N 400 - 500 Kcmil
353180	Q2A344N	400 KCMIL (.728) - 500 KCMIL (.814)	2	1.38 [35]	3.00 [76]	.81 [21]	3.09 [79]	2.00 [51]	.625-18	4.69 [119]	.38 [10]	1.56 [40]	3.00 [76]	BURNDY Q2A344N 400 - 500 Kcmil
358244	Q2A402N	600 KCMIL (.893) - 800 KCMIL (1.031)	1	1.62 [41]	3.00 [76]	1.00 [25]	3.12 [79]	2.38 [61]	.750-16	4.94 [126]	.44 [11]	1.88 [48]	3.62 [92]	BURNDY Q2A402N 600 - 800 Kcmil
358252	Q2A404N	600 KCMIL (.893) - 800 KCMIL (1.031)	2	1.62 [41]	3.00 [76]	1.00 [25]	3.12 [79]	2.38 [61]	.750-16	4.94 [126]	.44 [11]	1.88 [48]	3.62 [92]	BURNDY Q2A404N 600 - 800 Kcmil
358268	Q2A444N	850 KCMIL (1.062) - 1000 KCMIL (1.152)	2	1.75 [44]	3.25 [83]	1.25 [32]	3.25 [83]	2.56 [65]	.875-14	5.19 [132]	.50 [13]	2.00 [51]	3.88 [99]	BURNDY Q2A444N 850 - 1000 Kcmil
358276	Q2A464N	1100 KCMIL (1.209) - 1500 KCMIL (1.412)	2	2.00 [50]	3.50 [89]	1.25 [32]	3.25 [83]	2.94 [75]	.875-14	5.50 [140]	.69 [18]	2.31 [59]	4.50 [114]	BURNDY Q2A464N 1100 - 1500 Kcmil
358225	Q2A484N	1600 KCMIL (1.459) - 2000 KCMIL (1.631)	2	2.38 [60]	4.00 [102]	1.44 [37]	3.25 [83]	3.25 [83]	1.000-14	5.88 [150]	.81 [21]	2.50 [64]	4.88 [124]	BURNDY Q2A484N 1600 - 2000 Kcmil

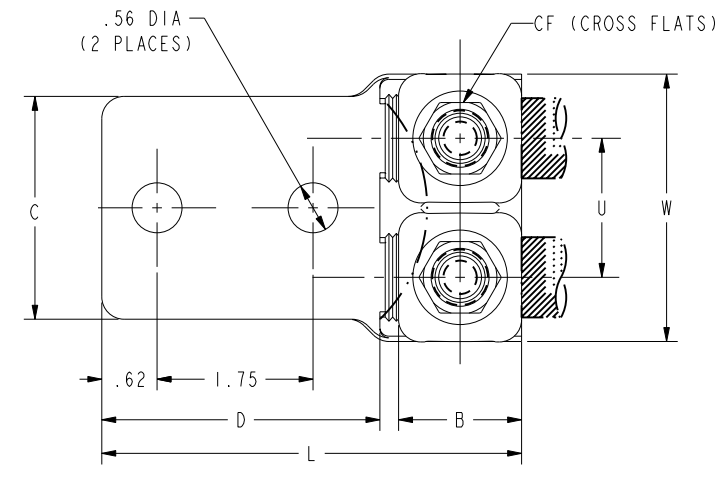


FIG. 1

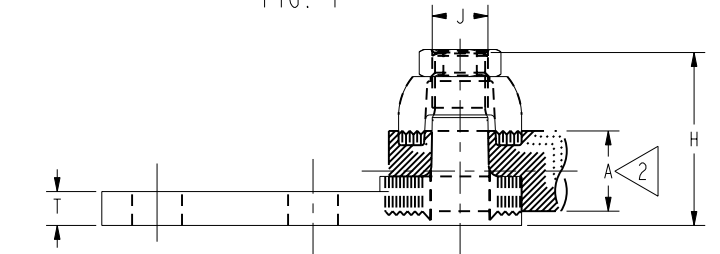


FIG. 2

- 1 MATERIAL:
CAST COPPER ALLOY
- 2 ACCOMMODATES:
SEE TABLE
- 3. DIMENSIONS IN BRACKETS [] ARE IN MILLIMETERS ROUNDED OFF TO THE NEAREST MILLIMETER, UNLESS OTHERWISE SPECIFIED AND ARE FOR REFERENCE ONLY.
- 4 MARKING: SEE TABLE

TO ORDER BURNDY® PRODUCTS CALL
 UNITED STATES
 1-800-346-4175 (LONDONDERRY, NH)
 CANADA:
 1-800-361-6975 (QUEBEC)
 1-800-387-6487 (ALL OTHER PROVINCES)
 FOR PRODUCT INFO: <http://www.burndy.com>

QIKLUGS (NEMA TONGUE)	
ITEM NO:	SEE TABLE
CAT. NO:	Q2A-N TABLE
DRAWN BY:	BALA A 10/01/13
CHECKER:	NJS 10/04/13
DSN APPVL:	T REYNOLDS 10/07/13
MFG APPVL:	-- --
QA APPVL:	C KOWALCZYK 10/11/13
MKT APPVL:	M BAILLY 10/07/13
PROJ #:	---
DOCUMENT TYPE:	Sales
REL LEVEL:	Released
SCALE:	1:1
DRAWING NO:	SD023314-01
REV:	B
SHEET 1 OF 1	

SUPERCEDES SD23314-2
 REFERENCES: PD9225
 Q2A-GEN'L DWG. SA5943.

REV: PE0200