

DRAWING NO.  
SD026550

REV	DATE	DESCRIPTION	ECO	BY	C'H'K.
A	11/28/2008 12:00:00 AM	REWORK IN PRO-E	16803	NG	BSK

CONDUCTOR RANGE A.C.S.R.			
'A' RUN RANGE		'AA' TAP RANGE	
MIN.	MAX.	MIN.	MAX.
#6 STR. (.198 DIA.)	#2 STR. (.325 DIA.)	#6 STR. (.198 DIA.)	#2 STR. (.325 DIA.)
1/0 STR. (.398 DIA.)	4/0 STR. (.563 DIA.)	#6 STR. (.198 DIA.)	#2 STR. (.325 DIA.)
1/0 STR. (.398 DIA.)	4/0 STR. (.563 DIA.)	1/0 STR. (.398 DIA.)	4/0 STR. (.563 DIA.)
4/0 STR. (.563 DIA.)	397.5 kcmil (.806 DIA.)	#6 STR. (.198 DIA.)	#2 STR. (.325 DIA.)
4/0 STR. (.563 DIA.)	397.5 kcmil (.806 DIA.)	1/0 STR. (.398 DIA.)	4/0 STR. (.563 DIA.)
4/0 STR. (.563 DIA.)	397.5 kcmil (.806 DIA.)	4/0 STR. (.563 DIA.)	397.5 kcmil (.806 DIA.)
397.5 kcmil (.783 DIA.)	605 kcmil (.994 DIA.)	#6 STR. (.198 DIA.)	#2 STR. (.325 DIA.)
397.5 kcmil (.783 DIA.)	605 kcmil (.994 DIA.)	1/0 STR. (.398 DIA.)	4/0 STR. (.563 DIA.)
397.5 kcmil (.783 DIA.)	605 kcmil (.994 DIA.)	4/0 STR. (.563 DIA.)	397.5 kcmil (.806 DIA.)
397.5 kcmil (.783 DIA.)	605 kcmil (.994 DIA.)	397.5 kcmil (.783 DIA.)	605 kcmil (.994 DIA.)
605 kcmil (.953 DIA.)	900 kcmil (1.162 DIA.)	#6 STR. (.198 DIA.)	#2 STR. (.325 DIA.)
605 kcmil (.953 DIA.)	900 kcmil (1.162 DIA.)	1/0 STR. (.398 DIA.)	4/0 STR. (.563 DIA.)
605 kcmil (.953 DIA.)	900 kcmil (1.162 DIA.)	4/0 STR. (.563 DIA.)	397.5 kcmil (.806 DIA.)
605 kcmil (.953 DIA.)	900 kcmil (1.162 DIA.)	397.5 kcmil (.783 DIA.)	605 kcmil (.994 DIA.)
605 kcmil (.953 DIA.)	900 kcmil (1.162 DIA.)	605 kcmil (.953 DIA.)	900 kcmil (1.162 DIA.)

CONDUCTOR RANGE ALUMINUM AND COPPER				CATALOG NUMBER	FIG. NO.	B	H	J	T	W	REV.
'A' RUN RANGE		'AA' TAP RANGE									
MIN.	MAX.	MIN.	MAX.								
#6 STR.	#2 STR.	#6 STR.	#2 STR.	QPX2C2CY	1	1.52	1.59	.312	.28	1.61	3
1/0 STR.	4/0 STR.	#6 STR.	#2 STR.	QPX282CY	1	1.52	1.88	.312	.31	1.84	3
1/0 STR.	4/0 STR.	1/0 STR.	4/0 STR.	QPX2828Y	1	2.00	2.00	.375	.31	2.14	3
250 kcmil	500 kcmil	#6 STR.	#2 STR.	QPX342CY	1	1.50	2.19	.312	.31	2.14	3
250 kcmil	500 kcmil	1/0 STR.	4/0 STR.	QPX3428Y	1	1.94	2.50	.375	.31	2.44	3
250 kcmil	500 kcmil	250 kcmil	500 kcmil	QPX3434Y	2	2.44	2.88	.375	.34	2.54	3
500 kcmil	750 kcmil	#6 STR.	#2 STR.	QPX392CY	1	1.75	2.44	.312	.34	2.47	3
500 kcmil	750 kcmil	1/0 STR.	4/0 STR.	QPX3928Y	1	1.94	2.81	.375	.34	2.66	3
500 kcmil	750 kcmil	250 kcmil	500 kcmil	QPX3934Y	2	2.44	3.09	.375	.38	2.96	3
500 kcmil	750 kcmil	500 kcmil	750 kcmil	QPX3939Y	2	3.00	3.25	.375	.38	3.00	3
750 kcmil	1000 kcmil	#6 STR.	#2 STR.	QPX442CY	1	1.75	2.66	.312	.31	2.56	3
750 kcmil	1000 kcmil	1/0 STR.	4/0 STR.	QPX4428Y	1	1.94	3.16	.375	.34	2.78	3
750 kcmil	1000 kcmil	250 kcmil	500 kcmil	QPX4434Y	2	2.44	3.19	.375	.34	2.91	3
750 kcmil	1000 kcmil	500 kcmil	750 kcmil	QPX4439Y	2	3.00	3.50	.375	.34	3.00	3
750 kcmil	1000 kcmil	750 kcmil	1000 kcmil	QPX4444Y	2	3.50	3.78	.500	.38	3.50	3

REFERENCE: FC027847-01

SUPERSEDES: XD25935

<p>TO ORDER BURNDY® PRODUCTS CALL UNITED STATES: 1-800-346-4175 (LONDONDERRY, NH) CANADA: 1-800-361-6975 (QUEBEC) 1-800-387-6487 (ALL OTHER PROVINCES) FOR PRODUCT INFO: <a href="http://www.burndy.com">http://www.burndy.com</a></p>	VERSITAP	
	ITEM NO: --	
	CAT. NO: QPXY	
	DRAWN BY: W.K.	7.12.52
	CHECKER: Q.K.K.	7.22.52
	DSN APPVL: --	--
	MFG APPVL: --	--
	QA APPVL: --	--
	MKT APPVL: --	--
	PROD FAM: CM&R MECHANICAL	DRAWING NO
PROJECT #: --	SIZE	
DOCUMENT TYPE: Sales	C	
REL LEVEL: Released		
	SD026550	
	SHEET 1 OF 2	
	REV	
	A	

REV: PE0200

DRAWING NO.  
SD026550

REV	DATE	DESCRIPTION	ECO	BY	C'H'K.
A	11/28/2008 12:00:00 AM	REBORN IN PRO-E	16803	NG	BSK

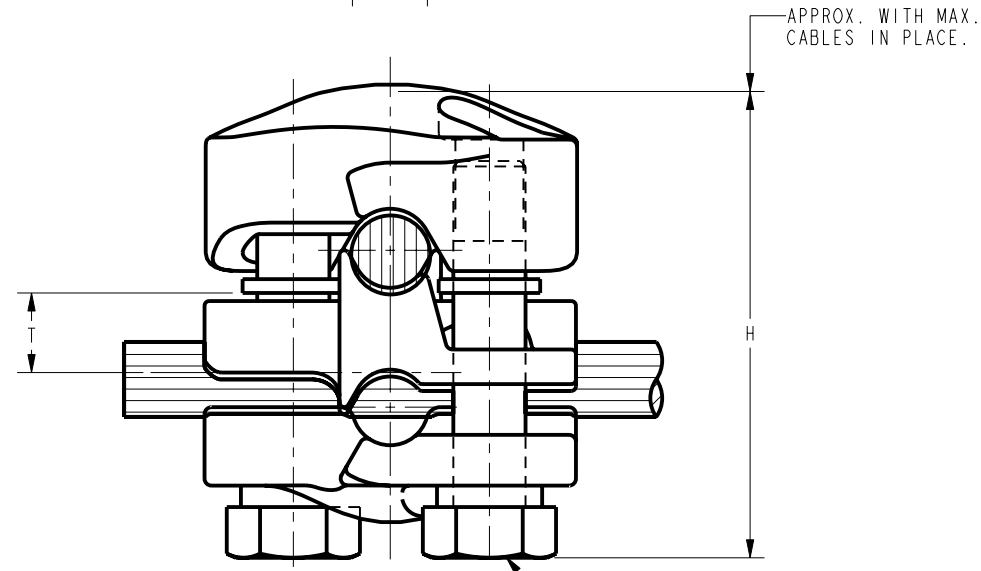
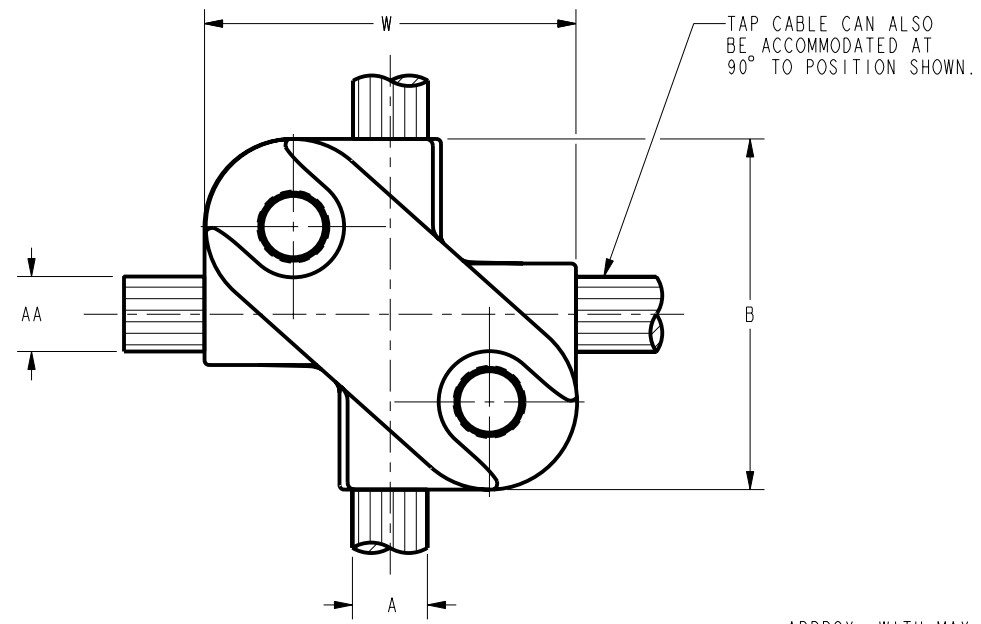


FIG. 1 'J' DIA. DURIUM HEX. HEAD BOLTS & BRONZE SHP. LW.

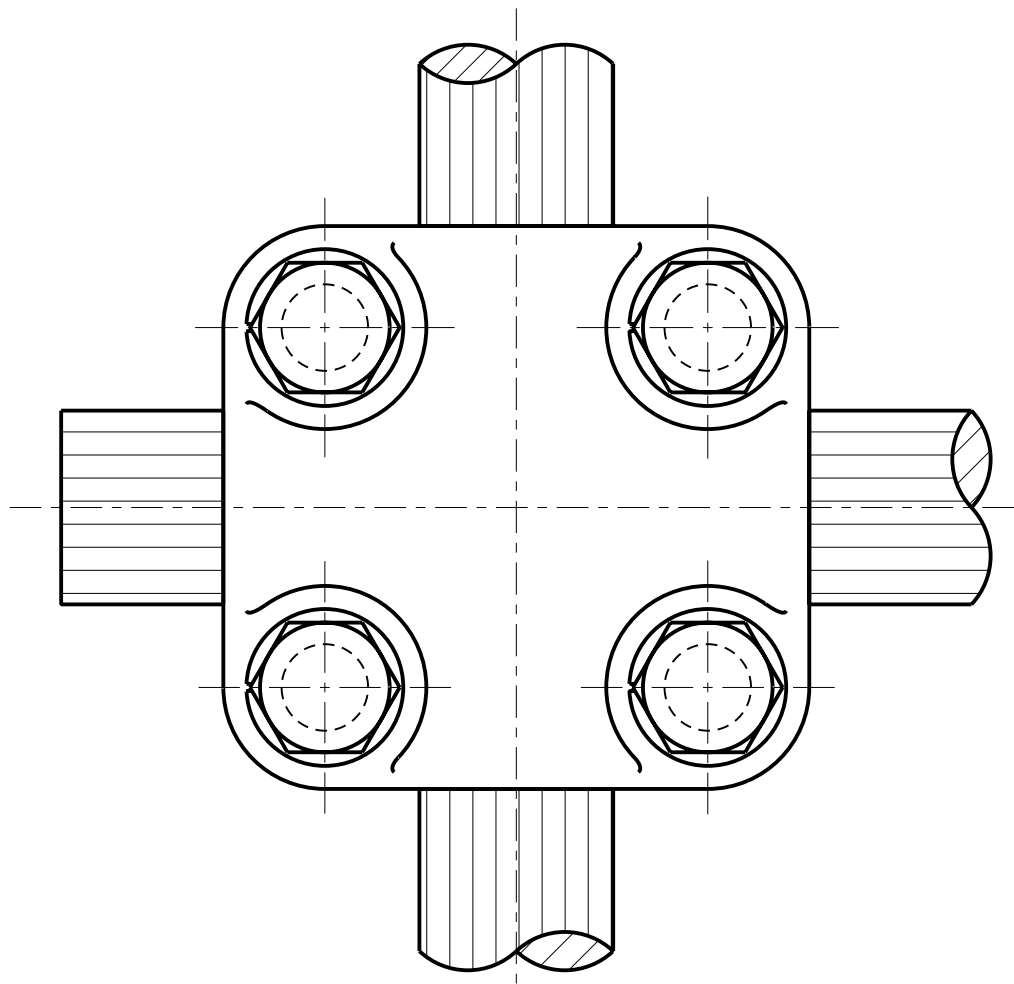


FIG. 2

NOTES:

SPECIAL INSTRUCTIONS FOR ALUMINUM CONDUCTORS: -

SHEAR PENETROX 'A' ON THE CONTACT GROOVES AND ON THE CONDUCTOR, SCRATCH BRUSH THE ALUMINUM CONDUCTORS, (BUT NOT THE CONNECTOR) AFTER APPLYING THE COMPOUND, PENETROX 'A' MAY BE PURCHASED FROM BURNDY ENG. CO. INC.

MATERIAL:

BODY- CAST COPPER ALLOY #113L  
CAPS-CAST COPPER ALLOY #330

FINISH:

TIN PLATED, ALL HARDWARE INCLUDED

TO ORDER BURNDY® PRODUCTS CALL		VERSITAP	
UNITED STATES: 1-800-346-4175 (LONDONDERRY, NH)		ITEM NO: 379330	CAT. NO: QPXY
CANADA: 1-800-361-6975 (QUEBEC) 1-800-387-6487 (ALL OTHER PROVINCES)		DRAWN BY: W.K. 7.12.52	CHECKER: O.K.K. 7.22.52
FOR PRODUCT INFO: <a href="http://www.burndy.com">http://www.burndy.com</a>		DSN APPVL: --	MFG APPVL: --
		GA APPVL: --	MKT APPVL: --
		SCALE: 2:1	
		PROD FAM: CM&R MECHANICAL	DRAWING NO: SD026550
		PROJECT #: --	REV: A
		DOCUMENT TYPE: Sales	SHEET 2 OF 2
		REL LEVEL: Released	

REV: PE0200