

DRAWING NO.
SD008453-01

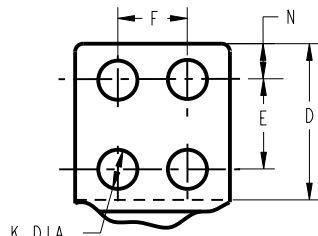
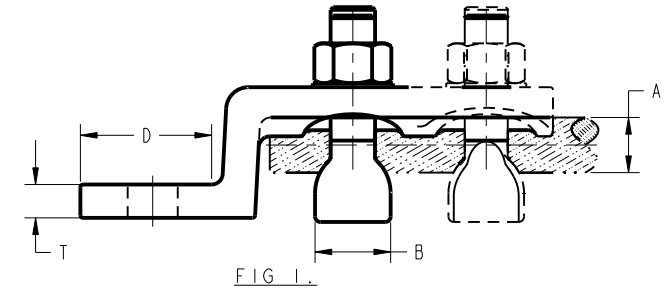
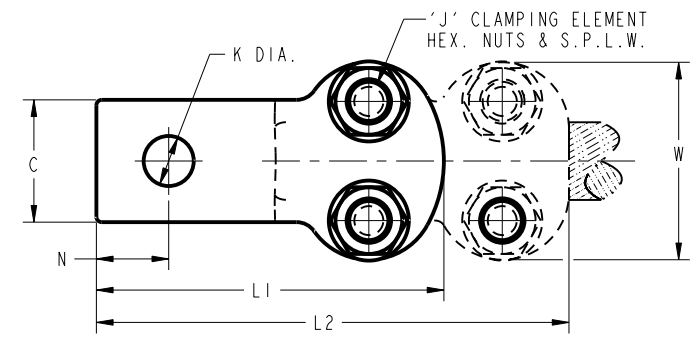
FIG. NO.	CAT. NO.	CAT. NO.	CABLE RANGE "A"		B	C	D	E	F	H	K DIA.	VA L1	VVA L2	N	T	W	J
			FROM	TO													
2	VVA4C	VA4C	#4 SOL. (.204)	#8 SOL. (.129)	.69 [18]	.75 [19]	.84 [21]	---		.69 [18]	.44 [11]	2.38 [61]	3.44 [87]	.38 [10]	.22 [6]	.81 [21]	KS20
2	VVA2C	VA2C	#2 STR. (.291)	#8 SOL. (.129)	.81 [21]	.81 [21]	.88 [22]	---		.81 [21]	.44 [11]	2.75 [70]	4.06 [103]	.41 [10]	.25 [6]	1.00 [25]	KS23
2	VVA25	VA25	1/0 STR. (.373)	#6 SOL. (.162)	.88 [22]	.88 [22]	.91 [23]	---		1.00 [25]	.44 [11]	2.88 [73]	4.31 [109]	.44 [11]	.25 [6]	1.19 [30]	KS25
2A	VVA252	VA252	1/0 STR. (.373)	#6 SOL. (.162)	.88 [22]	.88 [22]	1.66 [42]	0.88 [22]		1.00 [25]	.34 [9]	3.63 [92]	5.06 [129]	.34 [9]	.25 [6]	1.19 [30]	KS25
1	VVA28	VA28	4/0 STR. (.528)	1/0 STR. (.373)	1.09 [28]	1.06 [27]	1.00 [25]	---		1.06 [27]	.44 [11]	2.88 [73]	4.13 [105]	.53 [13]	.31 [8]	1.69 [43]	V28
1A	VVA282	VA282	4/0 STR. (.528)	1/0 STR. (.373)	1.09 [28]	1.06 [27]	1.88 [48]	1.00 [25]		1.06 [27]	.44 [11]	3.75 [95]	5.00 [127]	.41 [10]	.31 [8]	1.69 [43]	V28
1A	VVA282N		4/0 STR. (.528)	1/0 STR. (.373)		1.06 [27]		1.75 [44]			.56 [14]		6.19 [157]	.63 [16]	.31 [8]	1.69 [43]	
1	VVA30	VA30	300 Kcmil (.630)	1/0 STR. (.373)	1.09 [28]	1.13 [29]	1.09 [28]	---		1.25 [32]	.44 [11]	3.25 [83]	4.63 [118]	.63 [16]	.31 [8]	1.91 [49]	V30
1A	VVA302	VA302	300 Kcmil (.630)	1/0 STR. (.373)	1.09 [28]	1.13 [29]	XXX	1.00 [25]		1.25 [32]	.44 [11]	4.06 [103]	5.44 [138]	.44 [11]	.31 [8]	1.91 [49]	V30
1A	VVA302N		300 Kcmil (.630)	1/0 STR. (.373)		1.13 [29]		1.75 [44]			.56 [14]		XXX	.63 [16]	.31 [8]	1.94 [49]	
1	VVA34	VA34	500 Kcmil (.814)	300 Kcmil (.630)	1.31 [33]	1.38 [35]	1.41 [36]	---		1.50 [38]	.56 [14]	3.81 [97]	5.31 [135]	.81 [21]	.38 [10]	2.22 [56]	V34
1A	VVA342	VA342	500 Kcmil (.814)	300 Kcmil (.630)	1.31 [33]	1.38 [35]	XXX	1.00 [25]		1.50 [38]	.44 [11]	4.25 [108]	5.75 [146]	.44 [11]	.38 [10]	2.22 [56]	V34
1A	VVA342N		500 Kcmil (.814)	300 Kcmil (.630)		1.38 [35]		1.75 [44]			.56 [14]		6.88 [175]	.63 [16]	.38 [10]	2.25 [57]	
1B	VVA344	VA344	500 Kcmil (.814)	300 Kcmil (.630)	1.31 [33]	1.88 [48]	1.91 [49]	1.00 [25]	1.00 [25]	1.50 [38]	.44 [11]	4.25 [108]	5.75 [146]	.44 [11]	.38 [10]	2.22 [56]	V34
1B	VVA344N		500 Kcmil (.814)	300 Kcmil (.630)	.85 [22]	3.00 [76]	3.63 [92]	1.75 [44]	1.75 [44]	3.34 [85]	.56 [14]		6.88 [175]	.63 [16]	.38 [10]	2.22 [56]	
1	VVA40	VA40	800 Kcmil (1.031)	500 Kcmil (.814)	1.34 [34]	1.63 [41]	1.66 [42]	---		1.75 [45]	.69 [18]	4.50 [114]	6.38 [162]	.94 [24]	.38 [10]	2.63 [67]	V40
1A	VVA402	VA402	800 Kcmil (1.031)	500 Kcmil (.814)	1.34 [34]	1.63 [41]	XXX	1.13 [29]		1.75 [45]	.44 [11]	4.94 [125]	6.81 [173]	.50 [13]	.38 [10]	2.63 [67]	V40
1A	VVA402N		800 Kcmil (1.031)	500 Kcmil (.814)		1.63 [41]		1.75 [44]			.56 [14]		7.69 [195]	.63 [16]	.38 [10]	XXX	
1B	VVA404	VA404	800 Kcmil (1.031)	500 Kcmil (.814)	1.34 [34]	1.88 [48]	XXX	1.00 [25]	1.00 [25]	1.75 [45]	.44 [11]	4.75 [121]	6.63 [168]	.44 [11]	.38 [10]	2.63 [67]	V40
1B	VVA404N		800 Kcmil (1.031)	500 Kcmil (.814)		3.00 [76]		1.75 [44]	1.75 [44]		.56 [14]		7.69 [195]	.63 [16]	.38 [10]	XXX	
1	VVA44	VA44	1000 Kcmil (1.152)	750 Kcmil (.998)	1.41 [36]	1.88 [48]	1.72 [44]	---		1.94 [49]	.69 [18]	4.81 [122]	6.81 [173]	1.00 [25]	.50 [13]	2.88 [73]	V44
1A	VVA442	VA442	1000 Kcmil (1.152)	750 Kcmil (.998)	1.41 [36]	1.88 [48]	2.38 [60]	1.25 [32]		1.94 [49]	.56 [14]	5.44 [138]	7.44 [189]	.53 [13]	.50 [13]	2.88 [73]	V44
1A	VVA442N		1000 Kcmil (1.152)	750 Kcmil (.998)		1.88 [48]		1.75 [44]			.56 [14]		8.13 [207]	.63 [16]	.50 [13]	2.88 [73]	
1B	VVA444	VA444	1000 Kcmil (1.152)	750 Kcmil (.998)	1.41 [36]	2.13 [54]	2.09 [53]	1.13 [29]	1.13 [29]	1.94 [49]	.44 [11]	5.19 [132]	7.19 [183]	.50 [13]	.50 [13]	2.88 [73]	V44
1B	VVA444N		1000 Kcmil (1.152)	750 Kcmil (.998)		3.00 [76]		1.75 [44]	1.75 [44]		.56 [14]		8.06 [205]	.63 [16]	.50 [13]	2.88 [73]	
3	VVA46	VA46	1500 Kcmil (1.412)	1000 Kcmil (1.152)	2.00 [51]	2.25 [57]	XXX	---		2.88 [73]	.81 [21]	5.38 [137]	7.63 [194]	1.13 [29]	.56 [14]	3.25 [83]	V46
3A	VVA462	VA462	1500 Kcmil (1.412)	1000 Kcmil (1.152)	2.00 [51]	2.25 [57]	XXX	1.38 [35]		2.88 [73]	.56 [14]	6.06 [154]	8.31 [211]	.63 [16]	.56 [14]	3.25 [83]	V46
3A	VVA462N		1500 Kcmil (1.412)	1000 Kcmil (1.152)		2.25 [57]		1.75 [44]			.56 [14]		8.69 [221]	.63 [16]	.56 [14]	3.25 [83]	
3B	VVA464	VA464	1500 Kcmil (1.412)	1000 Kcmil (1.152)	2.00 [51]	2.50 [64]	2.53 [64]	1.38 [35]	1.38 [35]	2.88 [73]	.56 [14]	6.00 [152]	8.25 [210]	.56 [14]	.56 [14]	3.25 [83]	V46
3B	VVA464N		1500 Kcmil (1.412)	1000 Kcmil (1.152)		3.00 [76]		1.75 [44]	1.75 [44]		.56 [14]		8.75 [222]	.63 [16]	.56 [14]	3.25 [83]	
3	VVA48	VA48	2000 Kcmil (1.631)	1500 Kcmil (1.412)	2.25 [57]	2.63 [67]	1.03 [26]	---		3.31 [84]	.81 [21]	5.81 [148]	8.31 [211]	1.25 [32]	.63 [16]	3.75 [95]	V48
3A	VVA482	VA482	2000 Kcmil (1.631)	1500 Kcmil (1.412)	2.25 [57]	2.63 [67]	1.50 [38]	1.50 [38]		3.31 [84]	.56 [14]	6.56 [167]	9.06 [230]	.69 [18]	.63 [16]	3.75 [95]	V48
3A	VVA482N		2000 Kcmil (1.631)	1500 Kcmil (1.412)		2.63 [67]		1.75 [44]			.56 [14]		9.25 [235]	.63 [16]	.63 [16]	3.75 [95]	
3B	VVA484	VA484	2000 Kcmil (1.631)	1500 Kcmil (1.412)	2.25 [57]	2.75 [70]	2.78 [71]	1.50 [38]	1.50 [38]	3.31 [84]	.56 [14]	6.5 [165]	9.00 [229]	.63 [16]	.63 [16]	3.75 [95]	V48
3B	VVA484N		2000 Kcmil (1.631)	1500 Kcmil (1.412)		3.00 [76]		1.75 [44]	1.75 [44]		.56 [14]		9.25 [235]	.63 [16]	.63 [16]	3.75 [95]	

NOTES:

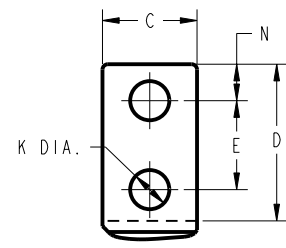
- MOUNTING HOLES CONFORM TO NEMA STANDARDS.
- SERVIT, TYPE KS, USED IN PLACE OF V-BOLT.
- DIMENSIONS IN [] BRACKETS ARE IN MILLIMETERS ROUNDED OFF TO THE NEAREST MILLIMETER, UNLESS OTHERWISE NOTED, AND ARE FOR REFERENCE ONLY.
- WHERE THE CABLE TO BE TERMINATED IS SUBJECTED TO CONSIDERABLE STRAIN OR VIBRATION, THE TYPE VVA VARILUG IS RECOMMENDED. TWO DURUM V-BOLTS WITH WIDE FLATTENED MID SECTIONS GRIP THE CABLE FIRMLY WITHOUT DAMAGING THE STRANDS. CONTACT SURFACE ON TERMINAL PAD MACHINED TO INSURE LOW CONTACT RESISTANCE WHEN INSTALLED.

- MATERIAL: CAST COPPER ALLOY.
- PLATING OPTIONS: ADD SUFFIX TO DENOTE PLATING REQUIREMENTS.
W = TIN PLATED BODY, CAP AND HARDWARE.
TN = TIN PLATE BODY AND CAP ONLY.
HARDWARE IS NOT PLATED.
CONTACT BURNDY FOR OTHER PLATING OPTIONS.

REV	DATE	DESCRIPTION	ECO	BY	C.H.K.
C	07/22/2015 00:00:00 AM	UPDATED AS PER MARKUP	40994	BR	NJS



TONGUE TYPE "B"



TONGUE TYPE "A"

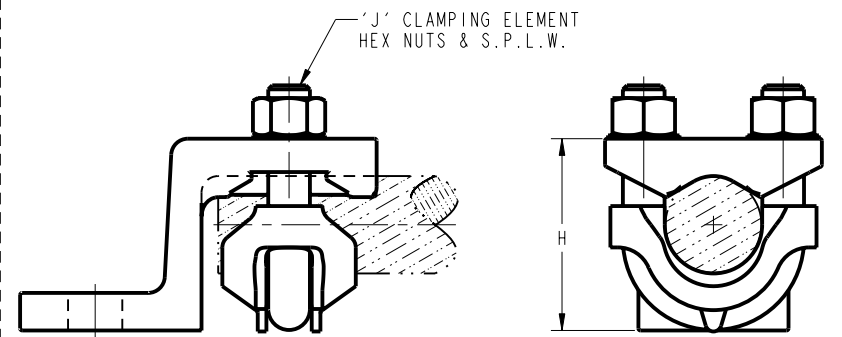


FIG. 3.

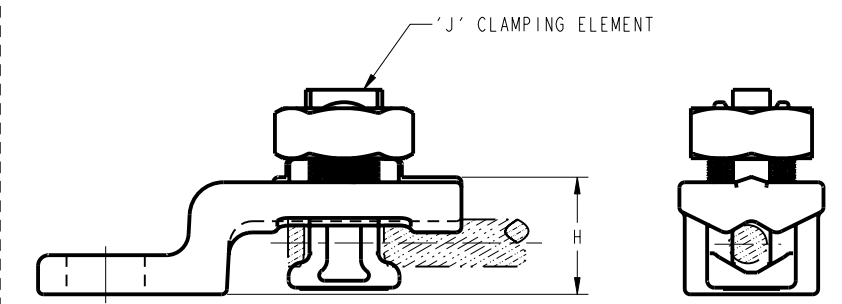


FIG. 2.

TO ORDER BURNDY® PRODUCTS CALL		ITEM NO: --	
UNITED STATES		CAT. NO: VA-VVA (GENERAL)	
1-800-346-4175 (LONDONDERRY, NH)		DRAWN BY: BHARATHIRAJA 07/27/15	
CANADA:		CHECKER: --	
1-800-361-6975 (QUEBEC)		DSN APPVL: R LAVOIE 07/27/15	
1-800-387-6487 (ALL OTHER PROVINCES)		MFG APPVL: T WAWRZYNIAK 07/28/15	
FOR PRODUCT INFO: http://www.burndy.com		QA APPVL: J HILLMAN 07/28/15	
		MKT APPVL: S MOIST 07/27/15	
		SCALE: 1:1	
		PROD FAM: --	
		DRAWING NO	
		SD008453-01	
		PROJECT #: --	
		SIZE	
		D	
		DOCUMENT TYPE: Sales	
		SHEET 1 OF 1	
		REV	
		C	

REV. PE0200