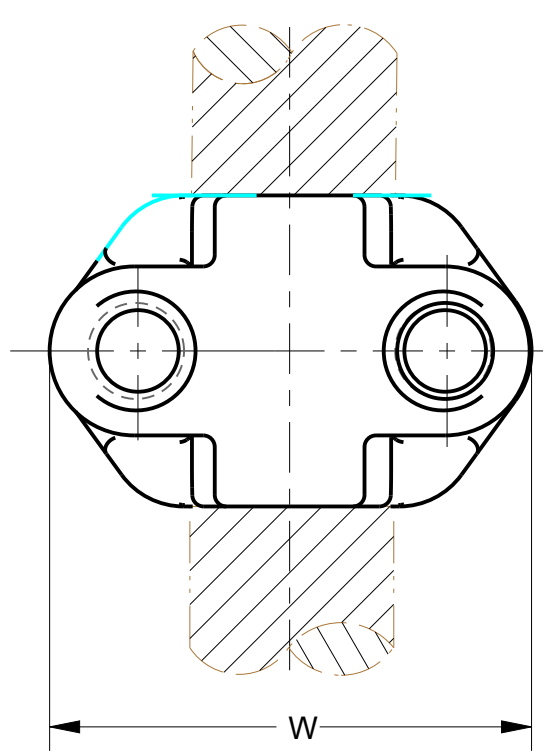
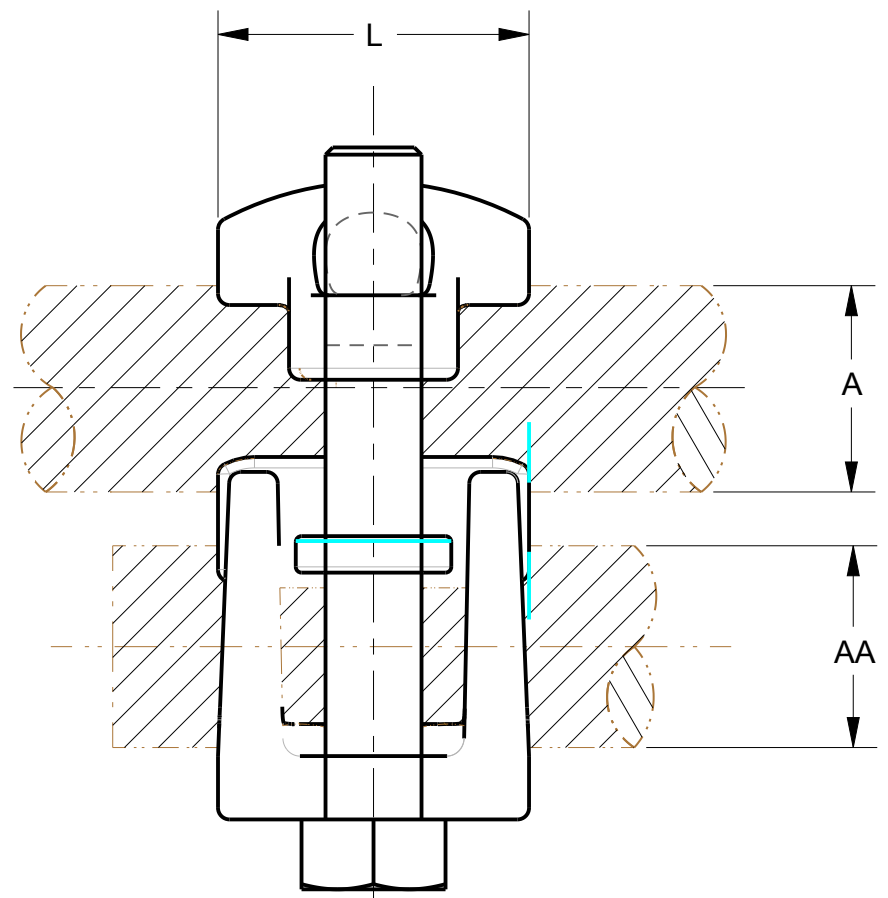
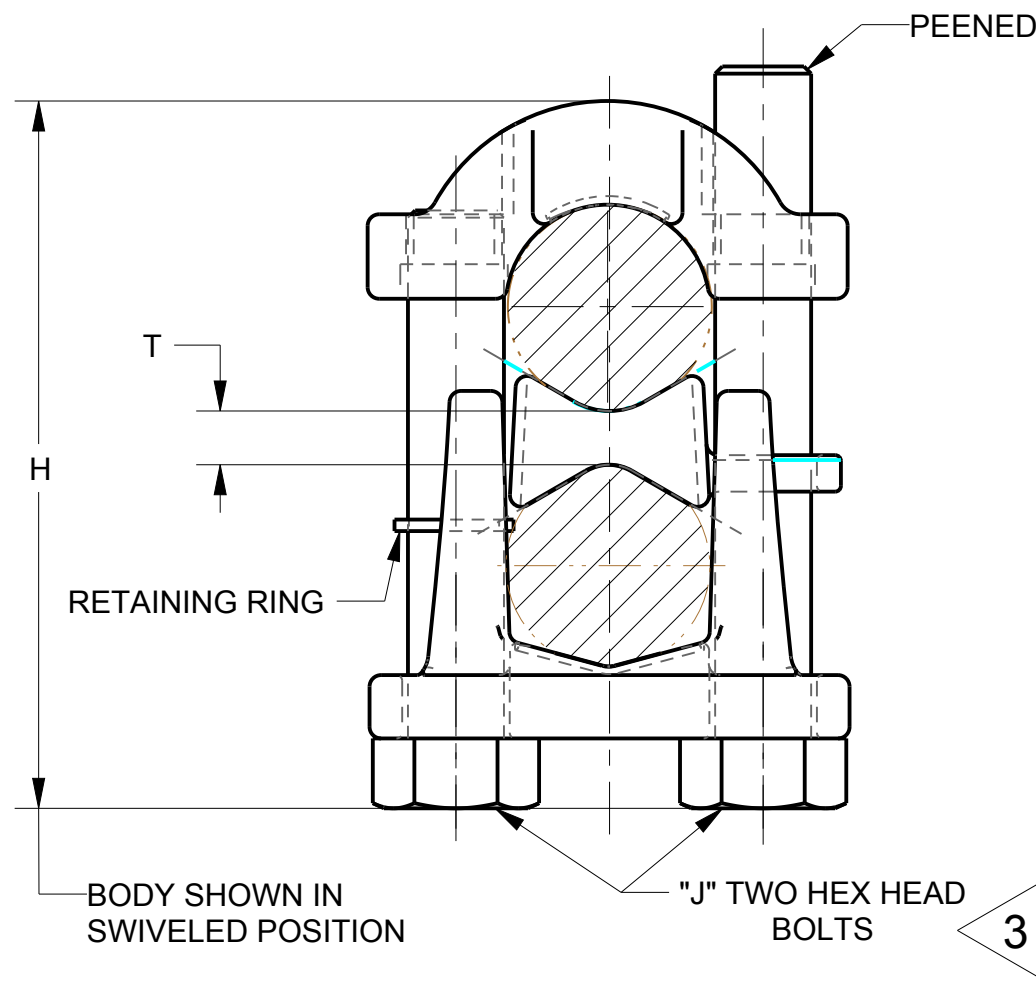
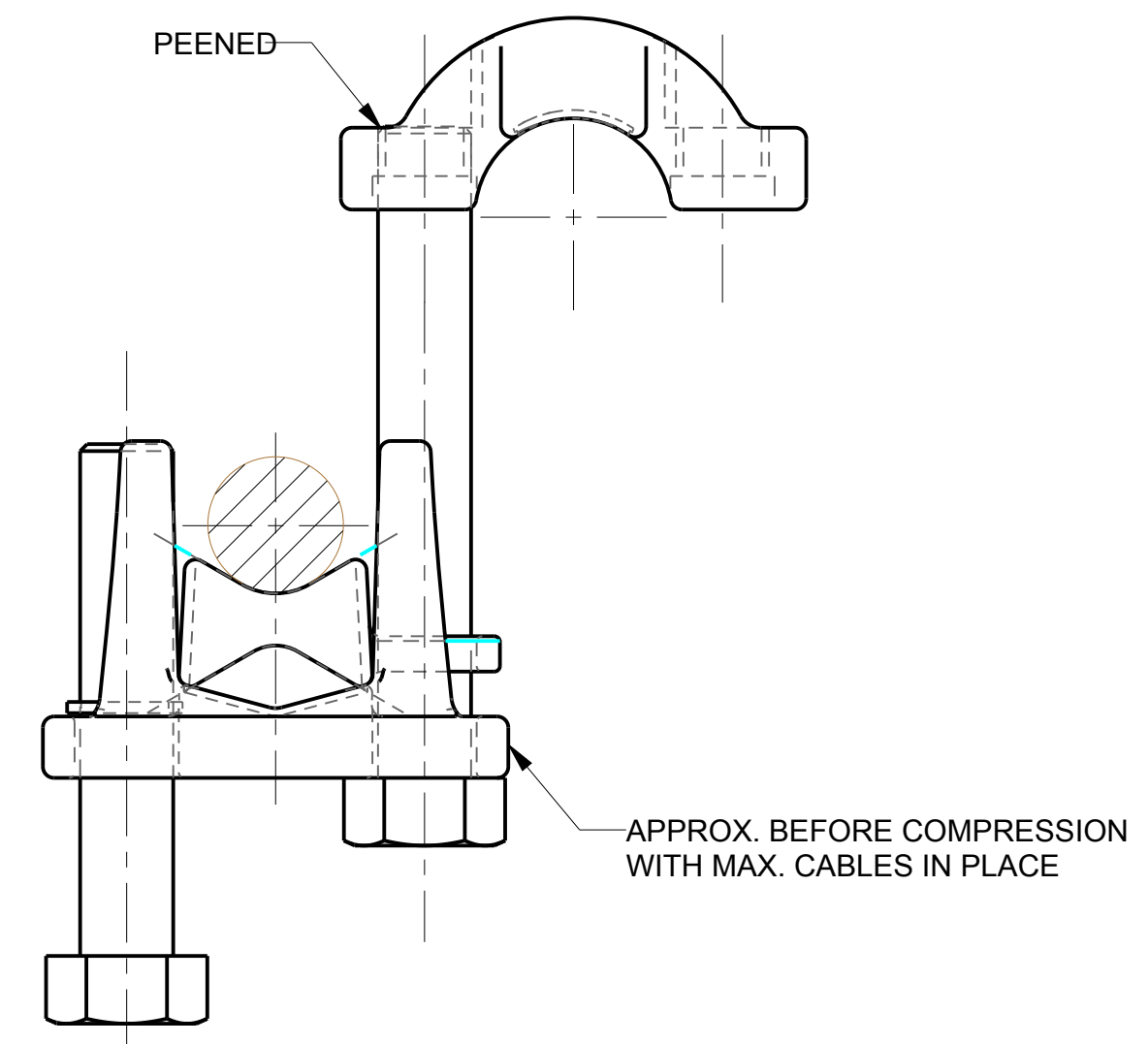


		CONDUCTOR RANGE			H	J	L	T	W	REV.	WRENCH SIZE (CROSSFLATS)	TORQUE IN-LB
CAT. NO.	MIN. RUN	MIN.TAP	MAX. RUN & TAP									
KVSW26	#2 STR. (.292 DIA.)	#6 SOL. (.162 DIA.)	2/0 STR. (.419 DIA.)	1.76	.31	1.04	.12	1.56	12	1/2	180	
1 KVSW28	1/0 STR. (.373 DIA.)	#6 SOL. (.162 DIA.)	4/0 STR. (.528 DIA.)	2.50	.38	1.04	.28	1.67	10	9/16	240	
KVSW31	250 Kcmil (.575 DIA.)	#4 SOL. (.204 DIA.)	350 Kcmil (.681 DIA.)	2.80	.50	1.62	.25	2.25	10	3/4	480	
1 KVSW34	400 Kcmil (.728 DIA.)	#4 STR. (.232 DIA.)	500 Kcmil (.813 DIA.)	3.06	.50	1.34	.28	2.20	10	3/4	480	
KVSW40	400 Kcmil (.728 DIA.)	4/0 STR. (.528 DIA.)	800 Kcmil (1.031 DIA.)	3.47	.50	2.31	.28	2.72	11	3/4	480	
KVSW44	500 Kcmil (.813 DIA.)	250 Kcmil (.575 DIA.)	1000 Kcmil (1.152 DIA.)	4.14	.62	2.56	.31	3.09	10	15/16	660	

REV	DATE	DESCRIPTION	ECO	BY	C'H'K.
B	08/29/2013 00:00:00 AM	ADD COLUMNS TO TABLE PER MU.	32653	RLB	PL



VIEW SHOWING SWIVEL ACTION



NOTES:

1 KVSW28 AND KVSW34 ONLY HAVE NO SERRATIONS.

2 RUN MIN. TAP

800 - 650 Kcmil	----	4/0
600 Kcmil	----	250 Kcmil
500 Kcmil	----	350 Kcmil
450 Kcmil	----	450 Kcmil
400 Kcmil	----	500 Kcmil

3 STANDARD BOLT MATERIAL IS DURIUM (SILICON BRONZE) OPTIONAL, SAME SIZE, 18-8 STAINLESS STEEL AND GALVANIZED STEEL BOLTS ARE ALSO AVAILABLE. SPECIFY -SS OR -GS RESPECTIVELY, ON END OF CATALOG NUMBER FOR OPTIONAL BOLTS.

4 MATERIAL: CAST COPPER ALLOY

TO ORDER BURNDY® PRODUCTS CALL

UNITED STATES:
1-800-346-4175 (LONDONDERRY, NH)

CANADA:
1-800-361-6975 (QUEBEC)
1-800-387-6487 (ALL OTHER PROVINCES)

FOR PRODUCT INFO: <http://www.burndy.com>

SERVICE CONNECTOR	
ITEM NO:	N/A
CAT. NO:	KVSW(GEN'L)
DRAWN BY:	SLAKSHMA 08/21/2008
CHECKER:	JP 09/16/2008
DSN APPVL:	JP 09/16/2008
MFG APPVL:	--
QA APPVL:	--
MKT APPVL:	--
PROD FAM:	--
PROJECT #:	--
DOCUMENT TYPE:	Sales
REL LEVEL:	Released
SCALE:	1:1
DRAWING NO	SD009323-01
REV	B
SHEET 1 OF 1	

REV: PEC0200

