

DRAWING NO.
SD031189

REV	DATE	DESCRIPTION	ECO	BY	C'H'K.
J	08/31/2011 00:00:00 AM	CHANGE TEMP TO HYMIC UPDATE "C" TO "A" RELEASE 2004	25415	BSB	MA

CATALOG NUMBER	CODE (AWG)	NAVY	METRIC SIZE (CLASS 2)	BOLT SIZE	METRIC BOLT SIZE	DIMENSIONS							
						B	C	E	K DIA.	L	N	O.D.	T REF.
YA362N	600 kcmil	-----	300MM ² STR [23.1]	1/2	M12	2.69 [68]	1.74 [44]	↑	↑	6.59 [167]	↑	1.19 [30]	↑
YA362NNT	600 kcmil	-----	300MM ² STR [23.1]	1/2	M12		1.47 [37]			6.59 [167]		1.19 [30]	
YA372N	650 kcmil	-----	-----	1/2	M12	2.81 [71]	1.80 [46]	↑	↑	6.74 [171]	↑	1.23 [31]	↑
YA382N	700 kcmil	-----	-----	1/2	M12		1.84 [47]			6.77 [172]		1.25 [32]	
YA392N	750 kcmil	-----	375MM ² STR	1/2	M12	2.88 [73]	1.91 [49]	↓	↓	6.87 [174]	↓	1.30 [33]	↓
YA392NNT	750 kcmil	-----	375MM ² STR	1/2	M12		1.63 [41]			6.87 [174]		1.30 [33]	
YA392ENNT							1.30 [33]			6.87 [174]		1.30 [33]	

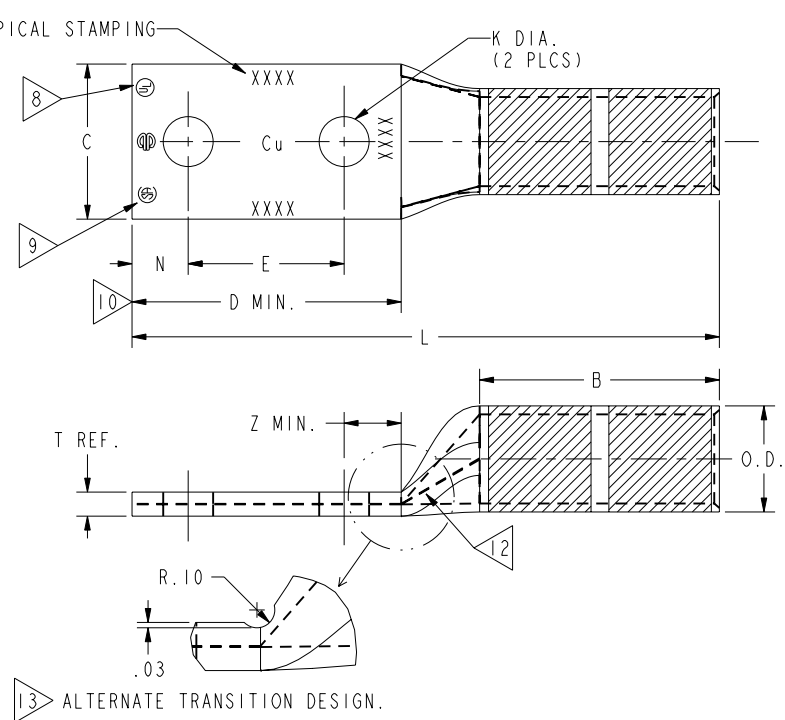
TOLERANCE BLOCK

CONNECTOR SIZE	TOLERANCES						
	B	C	E	K DIA.	L	N	O.D.
-6C THRU -25	±.06	±.04	±.02	±.02	±.09	±.03	±.01
-26 THRU -34	±.08	±.04	±.02	±.02	±.12	±.03	±.01
-35 AND UP	±.09	±.06	±.02	±.02	±.15	±.06	±.01

INSTALLATION TOOLING (# CRIMPS)

CATALOG NO.	COLOR CODE	DIE INFORMATION		MECHANICAL RATCHET				HYDRAULIC						DIELESS (# CRIMPS)	WIRE STRIP LENGTH	
		DIE INDEX	TYPE	YIMRTC	OUR840	MD6 MD7	MD6--R2 MD7--34R	PAT600 Y500	Y34A Y34B Y34BH	Y35, Y39 Y750, PAT750	PAT46 Y46	Y45	Y48B			Y60BHU
YA362N YA362NNT	GREEN	22 472	GREEN DIE SET NEST INDENTOR	-----	-----	-----	-----	-----	-----	U36RT(4) U32ART(4)	U36RT(4) U32ART(4)	U36RT(4) U32ART(4)	C36R(2) C32ART(2)	L36RT(2) L32ART(2)	HYDRAULIC: Y644(1) PAT644(1) Y81KFT(4) PAT81KFT(4) Y4PC834(4) PAT4PC834(4)	2-3/4"
YA372N	ORANGE	23	ORANGE DIE SET NEST INDENTOR	-----	-----	-----	-----	-----	-----	U37RT(4)	U37RT(4)	U37RT(4)	C37R(2)	L37RT(2)		2-7/8"
YA382N	PINK	400	PINK DIE SET NEST INDENTOR	-----	-----	-----	-----	-----	-----	U38RT(4)	U38RT(4)	U38RT(4)	-----	L38RT(2)	2-7/8"	
YA392N YA392NNT YA392ENNT	BLACK	24	BLACK DIE SET NEST INDENTOR	-----	-----	-----	-----	-----	-----	U39RT(4)	U39RT(4) P39RT(4)	U39RT(4) S39RT(4)	C39R(2) C36AR(2)	L39RT(2) L36ART(2)	2-15/16"	

- NOTES:**
- MATERIAL: COPPER TUBING
 - FINISH: TIN PLATED. FOR UNPLATED VERSION, ADD SUFFIX "BR" TO CATALOG NUMBER EX. YA362NBR.
 - CATALOG # PT6515 ADAPTOR IS REQUIRED TO USE "U" DIES IN Y45 SERIES TOOLS.
 - CATALOG # PUADP-1 ADAPTOR IS REQUIRED TO USE "U" DIES IN Y46 SERIES TOOLS.
 - PERMANENT DIE IN TOOLING.
 - DIMENSIONS IN BRACKETS [] ARE IN MILLIMETERS ROUNDED OFF TO THE NEAREST MILLIMETER, UNLESS OTHERWISE NOTED, AND ARE FOR REFERENCE ONLY.
 - FOR USE BY CUSTOMERS THAT HAVE THIS HYPRESS™. NO NEW Y34A HYPRESSES™ ARE BEING PROCESSED. Y34A USES A--D TYPE NEST DIES.
 - CONNECTORS ARE UL LISTED; UNDRILLED VERSIONS ARE NOT UL LISTED.
 - CONNECTORS ARE CSA CERTIFIED; UNDRILLED VERSIONS ARE NOT CSA CERTIFIED.
 - FOR UNDRILLED VERSIONS ADD SUFFIX "-U" TO END OF CATALOG NUMBER. FOR UNDRILLED VERSIONS, USE D MIN. = N MAX. + E MIN. + Z MIN.
 - "X", "W-RT", "W-VT", "U", & "L" DIE SETS ARE COLOR CODED. "A", "B", AND "C" DIES ARE NOT COLOR CODED. NESTS AND INDENTOR TYPE ARE NOT COLOR CODED.
 - ADD SUFFIX "DT" OR "DTS" TO ORDER LUGS WITH CRIMP BARREL SEALED AIR TIGHT INSIDE THE TRANSITION.



REFERENCE :SE209513

TO ORDER BURNDY® PRODUCTS CALL
UNITED STATES
1-800-346-4175 (LONDONDERRY, NH)
CANADA:
1-800-361-6975 (QUEBEC)
1-800-387-6487 (ALL OTHER PROVINCES)
FOR PRODUCT INFO: <http://www.burndy.com>

HYLUG™	
ITEM NO:	N/A
CAT. NO:	YA--2N (SEE TABLE)
DRAWN BY:	J MICHAUD 11/18/94
CHECKER:	D FILLION 11/18/94
DSN APPVL:	C PALAGI 10/24/94
MFG APPVL:	---
QA APPVL:	C ACKERMAN 11/17/94
MKT APPVL:	T NELSON 11/10/94
PROD FAM:	CM&R COMPRESSION
PROJECT #:	---
DOCUMENT TYPE:	Sales
REL LEVEL:	Released

DRAWING NO	REV
SD031189	J

SCALE: 1:1
SHEET 5 OF 10

REV: PE0200