

REV	DATE	DESCRIPTION	ECO	BY	C.H.K.
A	08/31/2016 00:00:00 AM	DRAWING RELEASED	44806	MM	NJS

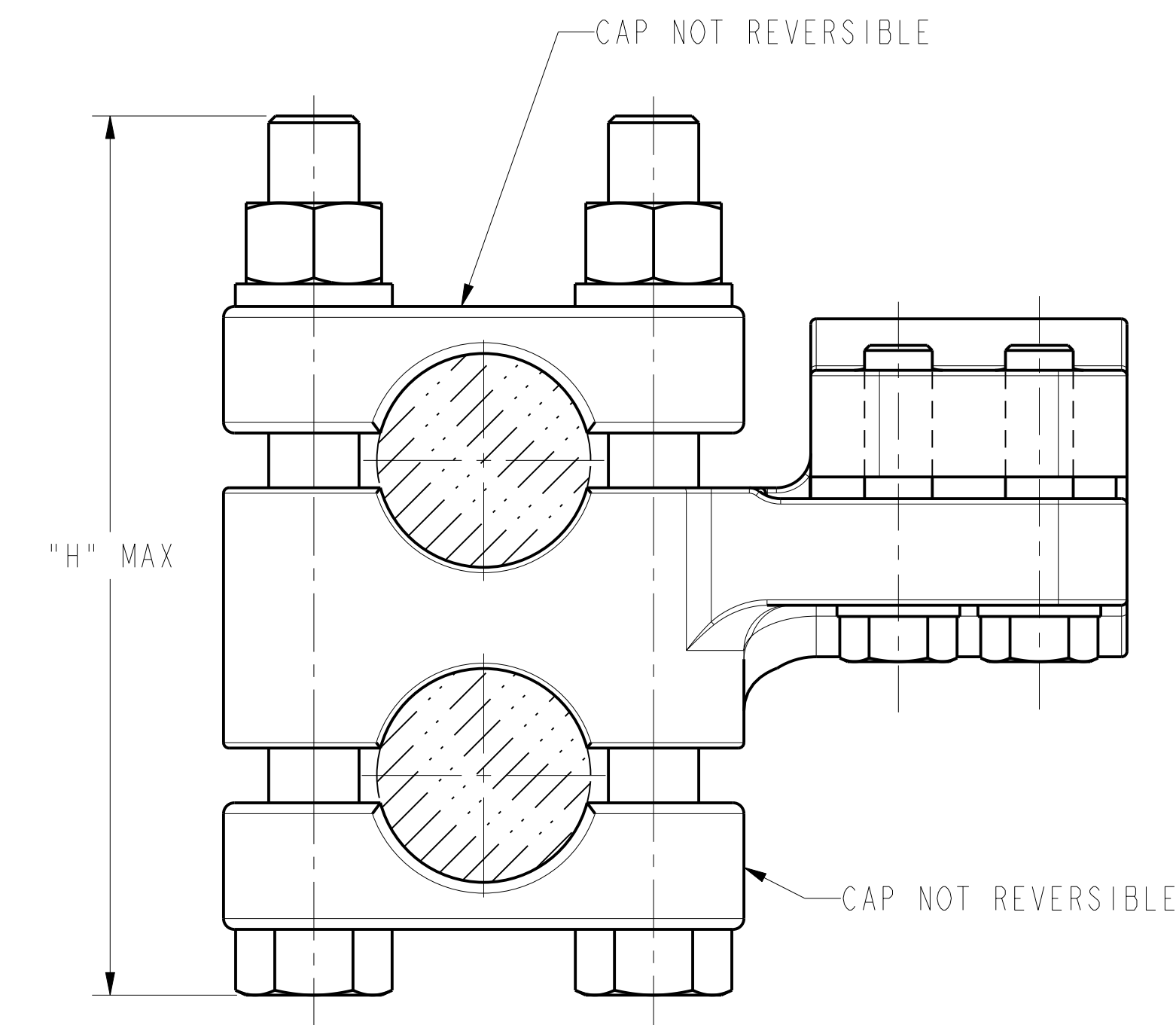
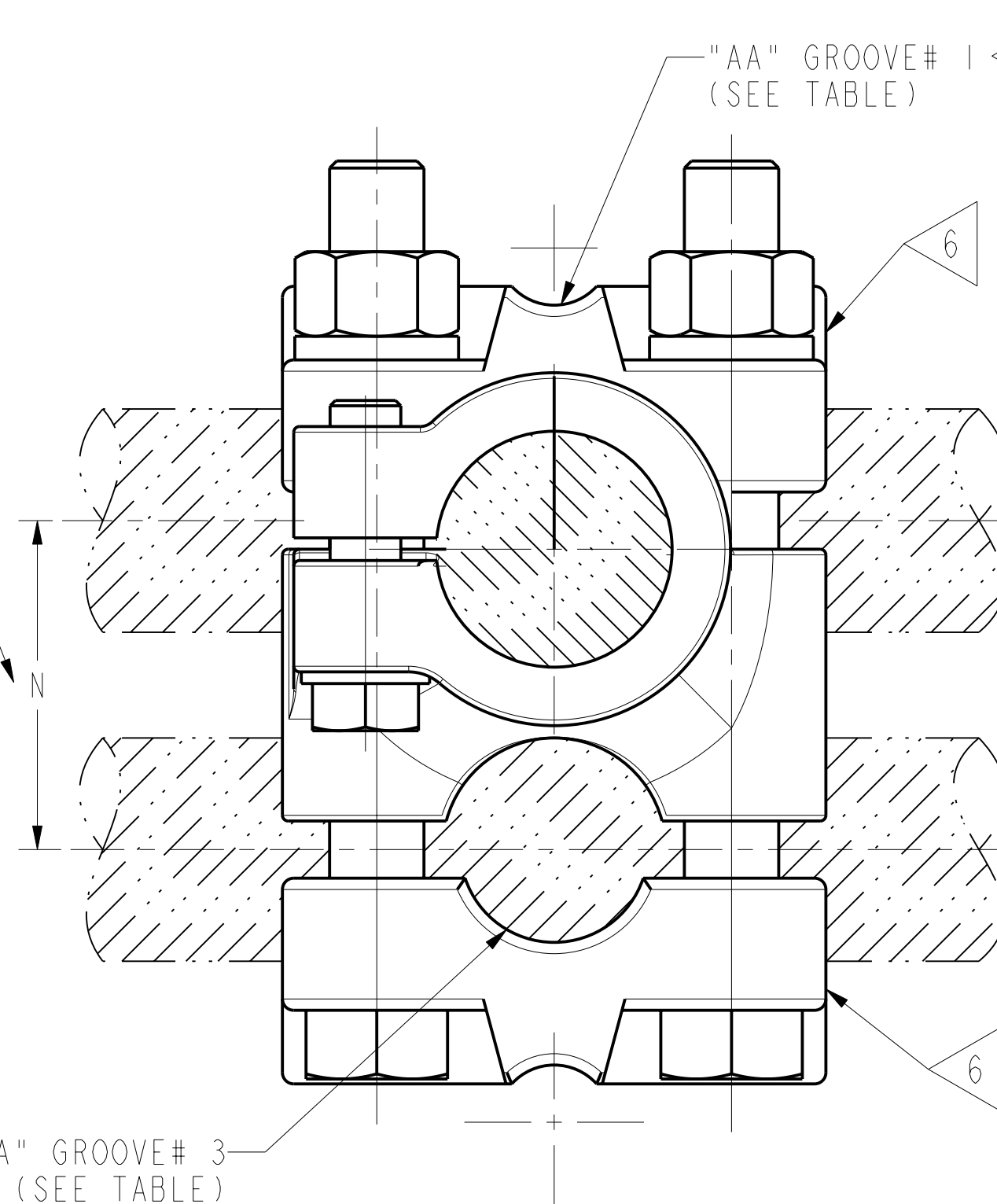
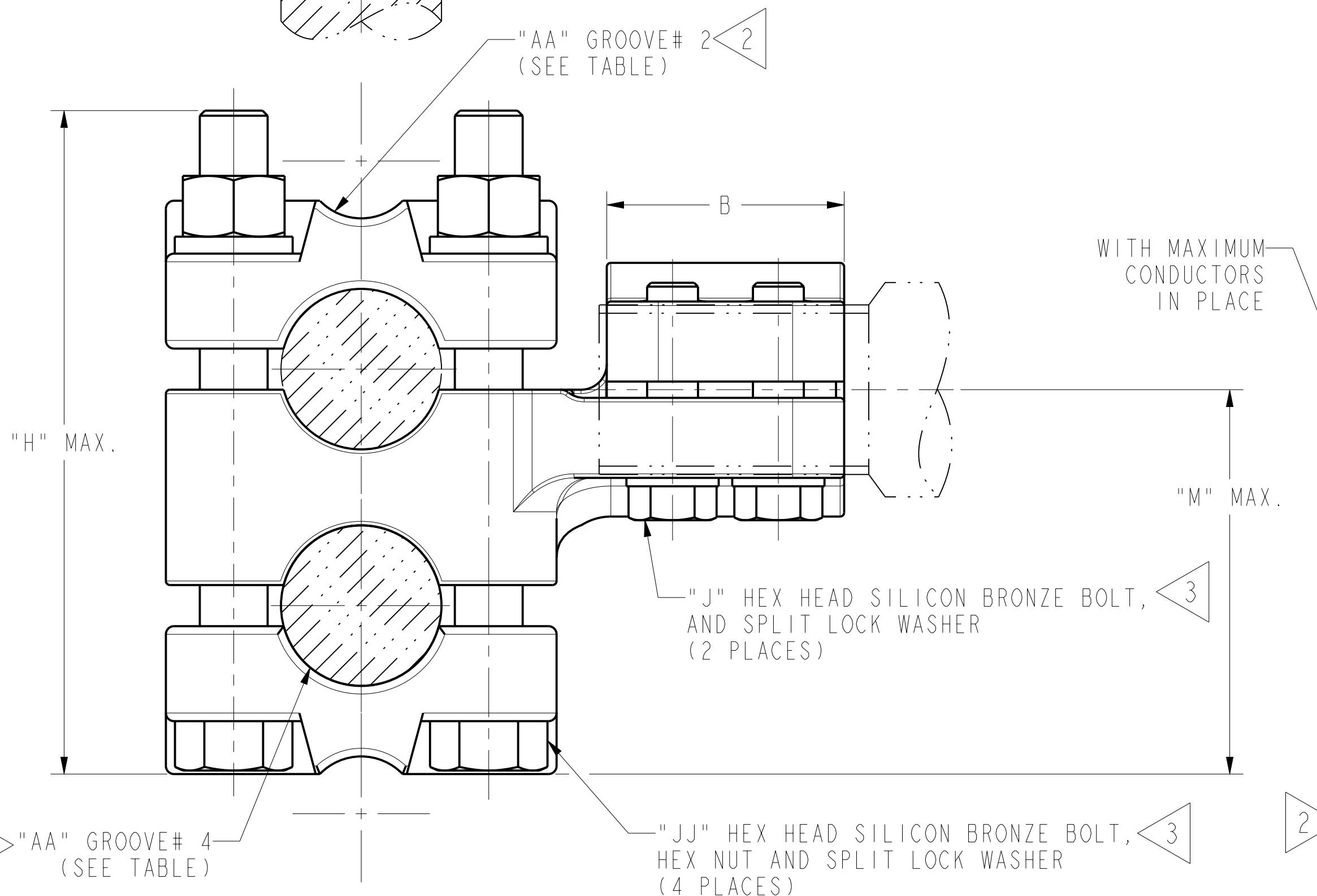
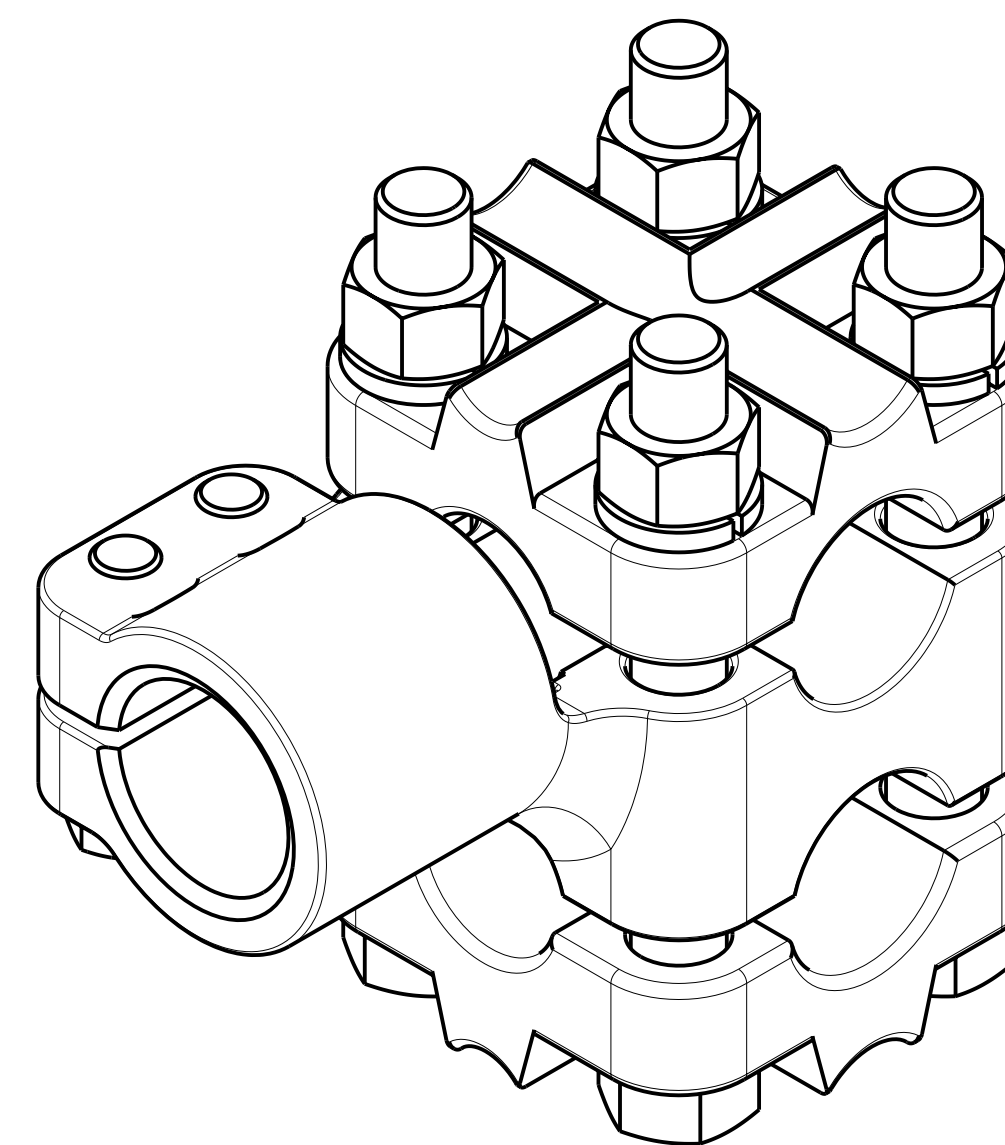
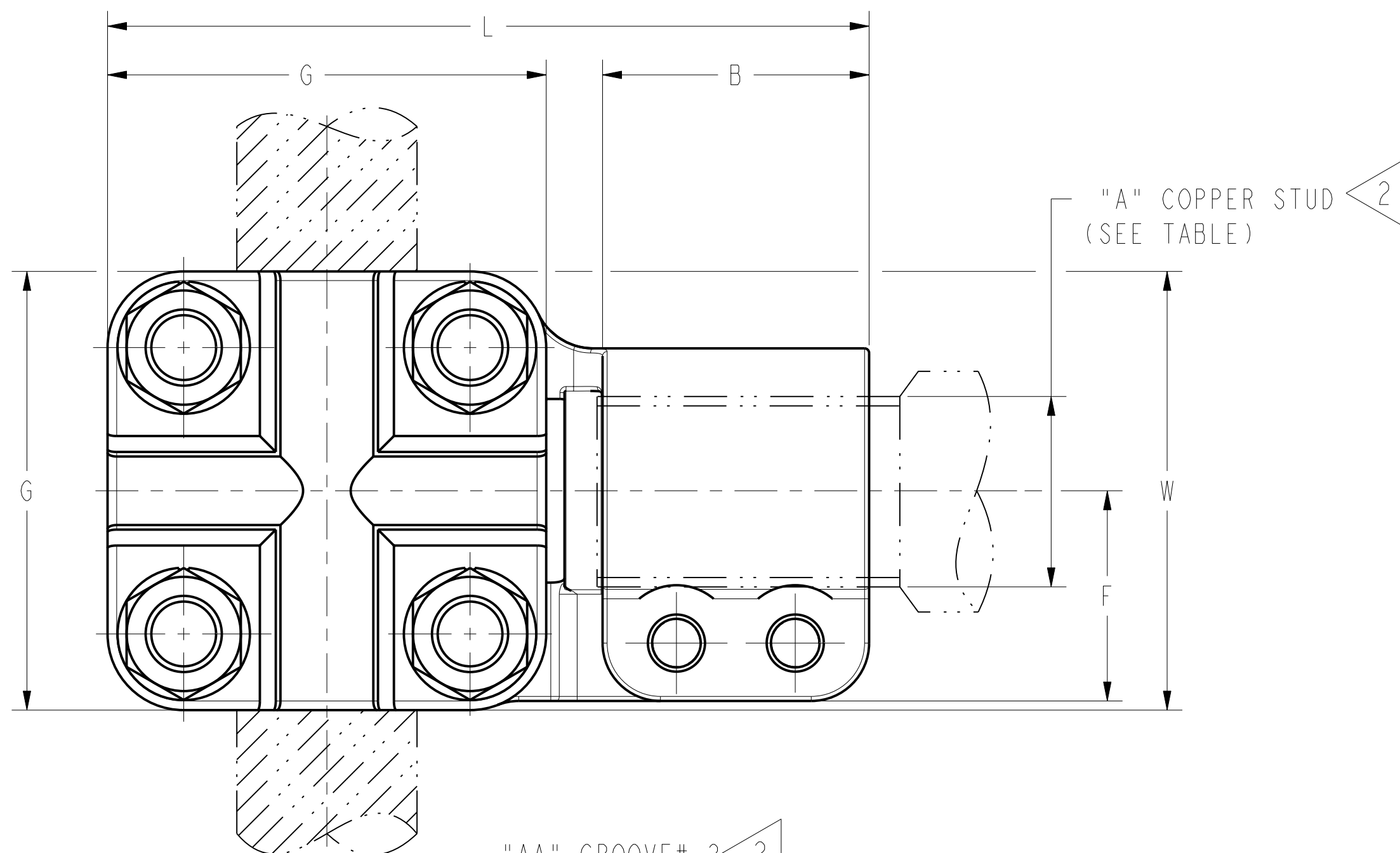


FIGURE-2

NOTES:

- MATERIAL: CAST COPPER ALLOY.
- ACCOMMODATES: SEE TABLE
- NOMINAL BOLT INSTALLATION TORQUE:  
 3/8" SILICON BRONZE HARDWARE - 240 LB-IN [30 Nm]  
 1/2" SILICON BRONZE HARDWARE - 480 LB-IN [55 Nm]  
 5/8" SILICON BRONZE HARDWARE - 660 LB-IN [75 Nm]  
 3/4" SILICON BRONZE HARDWARE - 1050 LB-IN [120 Nm]
- DIMENSIONS IN BRACKETS [ ] DENOTES METRIC UNITS [SI UNITS] AND ARE ROUNDED TO THE NEAREST WHOLE NUMBER. UNLESS OTHERWISE SPECIFIED THESE UNITS SHALL BE USED FOR REFERENCE ONLY.
- THE CONCEPT SHOWN INCORPORATES PRINCIPLES WHICH PERMIT OPERATION AT A VOLTAGE GRADIENT NORMALLY ASSOCIATED WITH 230 KV RMS OPERATION PHASE TO PHASE.
- CAP MAY BE ROTATED OR REVERSED TO PERMIT COMPLETE CABLE RANGE TO BE TAKEN EITHER IN LINE OR 90° TO STUD.

FIGURE-1

TO ORDER BURNDY® PRODUCTS CALL		STUD CONNECTOR	
UNITED STATES 1-800-346-4175 (LONDONDERRY, NH)		ITEM NO: SEE TABLE ON SHEET 2 OF 2	
CANADA: 1-800-361-6975 (QUEBEC) 1-800-387-6487 (ALL OTHER PROVINCES)		CAT. NO: NI1DR-- (TABLE) SEE ON SHEET 2 OF 2	
FOR PRODUCT INFO: <a href="http://www.burndy.com">http://www.burndy.com</a>		DRAWN BY: T.J.M 04/11/57	
		CHECKER: E.R.D 04/12/57	
		DSN APPVL: NJ SUDHAKAR 09/08/16	
		MFG APPVL: B CHARETTE 09/07/16	
		QA APPVL: J HILLMAN 09/20/16	
		MKT APPVL: B KEENAN 09/09/16	
		SCALE: NTS	
		PROD FAM: SUBSTATION	
		DRAWING NO	
		PROJECT #: --	
		SIZE	
		DOCUMENT TYPE: Sales	
		REL LEVEL: Released	
		SD037349	
		SHEET 1 OF 2	
		REV	
		A	

REV	DATE	DESCRIPTION	ECO	BY	C'H'K.
A	08/31/2016 00:00:00 AM	DRAWING RELEASED	44806	MM	NJS

ITEM NO.	CATALOG NO.	ACCOMMODATES "A"		ACCOMMODATES "AA"				B	F	G	"H" MAX.	J	JJ	L	"M" MAX.	N	W	FIG.#	
		COPPER STUD		STANDARD COPPER CABLE															COPPER TUBE
		STUD A	THREADS PER INCH	GROOVE #1	GROOVE #2	GROOVE #3	GROOVE #4												
--	NI1DR675G1	1 3/4"	12					2.25 [57]	1.75 [44]		5.00 [127]	1/2"-13		6.34 [161]	2.92 [74]		3.19 [81]		
--	NI1DR655G2	1 1/8"	12					1.53 [39]	1.25 [32]					4.69 [119]		1.75 [44]	2.88 [73]		
25015302	NI1DR6644T12	1 1/4"	12	2 SOL (.258 [7] DIA.) TO 250 Kcmil (.575 [15] DIA.)	300 Kcmil (.630 [16] DIA.) TO 500 Kcmil (.813 [21] DIA.)	550 Kcmil (.855 [22] DIA.) TO 700 Kcmil (.964 [24] DIA.)	750 Kcmil (.998 [25] DIA.) TO 1000 Kcmil (1.152 [29] DIA.)	3/8" IPS (.675 [17] DIA.) TO 3/4" IPS (1.050 [27] DIA.)		2.88 [73]	4.89 [124]	3/8"-16	1/2"-13	5.00 [127]	2.83 [72]				
296121	NI1DR6744T12	1 1/2"	12					2.03 [52]	1.62 [41]		5.00 [127]	1/2"-13		6.12 [155]	2.92 [74]		3.06 [78]		
25019995	NI1DR6848T12	2"	12	4/0 STR (.528 [13] DIA.) TO 600 Kcmil (.893 [23] DIA.)	650 Kcmil (.929 [24] DIA.) TO 1200 Kcmil (1.263 [32] DIA.)	1250 Kcmil (1.289 [33] DIA.) TO 1600 Kcmil (1.459 [37] DIA.)	1700 Kcmil (1.504 [38] DIA.) TO 2000 Kcmil (1.632 [41] DIA.)	3/8" IPS (.675 [17] DIA.) TO 1 1/4" IPS (1.660 [42] DIA.)		3.56 [90]	6.00 [152]	1/2"-13	1/2"-13	7.38 [187]	3.56 [90]	2.18 [55]	3.64 [92]		
25019998	NI1DR7048T12	3"	12					2.88 [73]	2.56 [65]			5/8"-11		7.88 [200]			4.32 [110]		
--	NI1DR7148T0	3 1/2"	SMOOTH	4/0 STR (.528 [13] DIA.) TO 600 Kcmil (.893 [23] DIA.)	650 Kcmil (.929 [24] DIA.) TO 1200 Kcmil (1.263 [32] DIA.)	1250 Kcmil (1.289 [33] DIA.) TO 1600 Kcmil (1.459 [37] DIA.)	1700 Kcmil (1.504 [38] DIA.) TO 2000 Kcmil (1.632 [41] DIA.)	3/8" IPS (.675 [17] DIA.) TO 1 1/4" IPS (1.660 [42] DIA.)		3.56 [90]	6.00 [152]	5/8"-11	1/2"-13	8.00 [203]	3.56 [90]	2.18 [55]	4.59 [117]		
--	NI1DR655G5	1 1/8"	12			6 SOL (.162 [4] DIA.) TO 1 STR (.332 [8] DIA.)	2/0 SOL (.365 [9] DIA.) TO 4/0 STR (.528 [13] DIA.)			1.82 [46]	2.75 [70]	3/8"-16	3/8"-16	4.12 [105]	1.73 [44]	.91 [23]	2.25 [57]	2	
25006278	NI1DR6434T16	3/4"	16					1.53 [39]	1.07 [27]					4.09 [104]			2.19 [56]		
25016042	NI1DR6534T14	1"	14	6 SOL (.162 [4] DIA.) TO 2 STR (.292 [7] DIA.)	1/0 SOL (.325 [8] DIA.) TO 4/0 STR (.528 [13] DIA.)	250 Kcmil (.575 [15] DIA.) TO 350 Kcmil (.681 [17] DIA.)	400 Kcmil (.728 [18] DIA.) TO 500 Kcmil (.813 [21] DIA.)	3/8" IPS (.675 [17] DIA.) TO 1/2" IPS (.840 [21] DIA.)		2.19 [57]	3.75 [95]	3/8"-16	3/8"-16	3.96 [101]	2.31 [59]	1.34 [34]	2.28 [58]		
--	NI1DR655G6	1 1/8"	12					1.53 [39]	1.25 [32]					3.97 [101]			2.38 [60]		
001974	NI1DR6734T12	1 1/2"	12					2.03 [52]	1.62 [41]			1/2"-13		4.94 [125]			2.75 [70]		
--	NI1DR6444T16	3/4"	16					1.53 [39]	1.07 [27]					4.66 [118]					
--	NI1DR6544T14	1"	14					1.53 [39]	1.19 [30]					4.78 [121]	2.92 [74]		2.88 [73]		
--	NI1DR655G7	1 1/8"	12					1.53 [39]	1.25 [32]					4.66 [118]					
296203	NI1DR6844T12	2"	12	2 SOL (.258 [7] DIA.) TO 250 Kcmil (.575 [15] DIA.)	300 Kcmil (.630 [16] DIA.) TO 500 Kcmil (.813 [21] DIA.)	550 Kcmil (.855 [22] DIA.) TO 700 Kcmil (.964 [24] DIA.)	750 Kcmil (.998 [25] DIA.) TO 1000 Kcmil (1.152 [29] DIA.)	3/8" IPS (.675 [17] DIA.) TO 3/4" IPS (1.050 [27] DIA.)		2.88 [73]	5.00 [127]	1/2"-13	1/2"-13	6.12 [155]		1.75 [44]	3.32 [84]		
--	NI1DR705G1	3 1/4"	12					3.00 [76]	2.84 [72]			5/8"-11		7.56 [192]	3.08 [78]		5.02 [128]		
25004450	NI1DR67544T12	1 3/4"	12					2.03 [52]	1.75 [44]					6.12 [155]	2.92 [74]		3.19 [81]		
--	NI1DR67244T0	40MM	SMOOTH					2.03 [52]	1.65 [42]			1/2"-13					2.88 [73]		
--	NI1DR67234T0	40MM	SMOOTH	6 SOL (.162 [4] DIA.) TO 2 STR (.292 [7] DIA.)	1/0 SOL (.325 [8] DIA.) TO 4/0 STR (.528 [13] DIA.)	250 Kcmil (.575 [15] DIA.) TO 350 Kcmil (.681 [17] DIA.)	400 Kcmil (.728 [18] DIA.) TO 500 Kcmil (.813 [21] DIA.)	3/8" IPS (.675 [17] DIA.) TO 1/2" IPS (.840 [21] DIA.)		2.19 [57]	3.75 [95]	1/2"-13	3/8"-16	4.94 [125]	2.31 [59]	1.34 [34]	2.71 [69]		
--	NI1DR6834T12	2"	12					2.03 [52]	1.88 [48]								2.98 [76]		

REV: PE0200

FOR NOTES SEE SHEET 1 OF 2

TO ORDER BURNDY® PRODUCTS CALL UNITED STATES 1-800-346-4175 (LONDONDERRY, NH) CANADA: 1-800-361-6975 (QUEBEC) 1-800-387-6487 (ALL OTHER PROVINCES) FOR PRODUCT INFO: <a href="http://www.burndy.com">http://www.burndy.com</a>	STUD CONNECTOR	
	ITEM NO:	SEE TABLE
	CAT. NO:	SEE TABLE
	DRAWN BY:	T.J.M 04/11/57
	CHECKER:	E.R.D 04/12/57
	DSN APPVL:	NJ SUDHAKAR 09/08/16
	MFG APPVL:	B CHARETTE 09/07/16
	QA APPVL:	J HILLMAN 09/20/16
	MKT APPVL:	B KEENAN 09/09/16
	PROD FAM: SUBSTATION	DRAWING NO: SD037349
PROJECT #:	SIZE: D	
DOCUMENT TYPE: Sales	SHEET 2 OF 2	
REL LEVEL: Released		

