



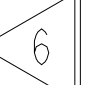

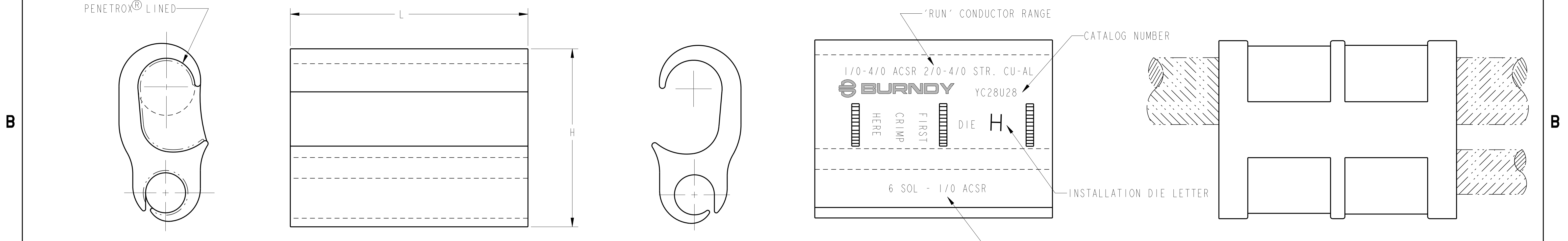
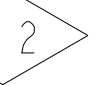
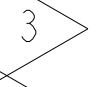
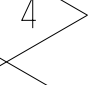

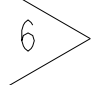
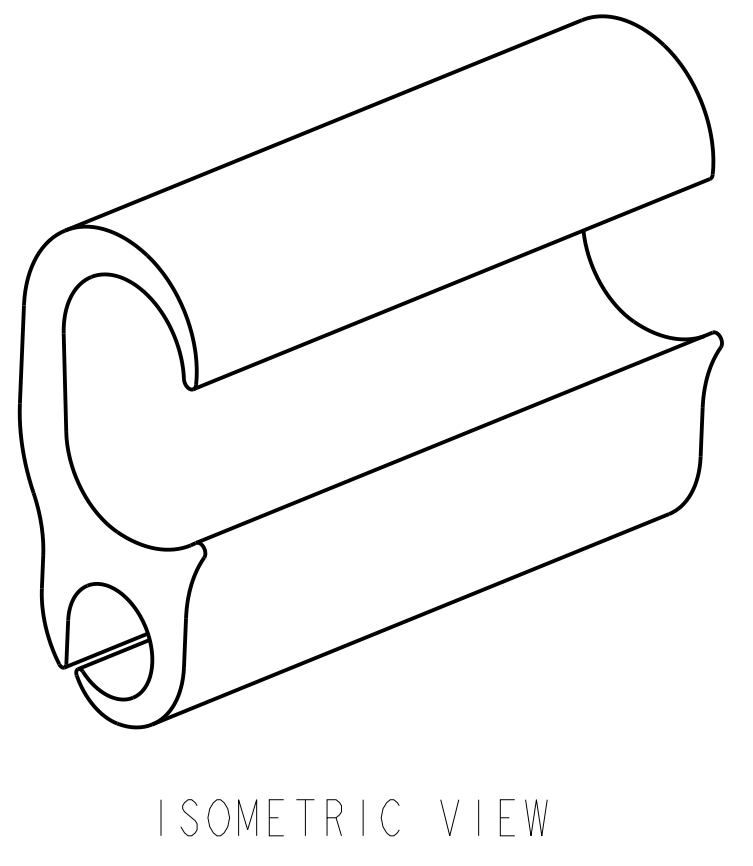


REV	DATE	DESCRIPTION	ECO	BY	C.H.K.
D	04/27/2017 00:00:00 AM	LOGO UPDATE	46590	BK	MB

D CATALOG NUMBER	CONDUCTOR RANGES ACCOMMODATED  														DIMENSIONS		INSTALLATION TOOLING (# OF CRIMPS)								
	COPPER OR ALUMINUM								A.C.S.R								COLOR CODE	DIE INFORMATION		MECHANICAL RATCHET MD6, MD7	HYDRAULIC				
	RUN				TAP				RUN				TAP					DIE INDEX	TYPE		Y35, Y39, Y750 BAT35, BAT750	Y46 	Y45 		
	MIN.	STR.	MAX.	STR.	MIN.	STR.	MAX.	STR.	MIN.	STR.	MAX.	STR.	MIN.	STR.	MAX.	STR.	H			L					
YC4U1	#4(.204)	1	#4(.232)	7	#6(.162)	1	#1(.332)	19	#4(.250)	6-1	#4(.257)	7-1	#6(.198)	6-1	#2(.325)	7-1	1.47 [37]	1.81 [46]	---	D	DIE SET	-----	U-D(2)	U-D(2)	U-D(2)
YCIU1	#2(.292)	7	#1(.328)	7	#6(.162)	1	#1(.328)	7	#2(.316)	6-1	#2(.325)	7-1	#6(.198)	6-1	#2(.325)	7-1	1.62 [41]	1.81 [46]	---	D	DIE SET	-----	U-D(2)	U-D(2)	U-D(2)
YPC28U4	3/0(.464)	7	4/0(.522)	7	#6(.162)	1	#4(.232)	7	3/0(.502)	6-1	4/0(.563)	6-1	#6(.198)	6-1	#4(.250)	6-1	1.70 [43]	1.69 [43]	BLUE ---	D3	DIE SET	----- PERM GR(4)	U-YFD(1) U-D3(1)	U-YFD(1) U-D3(1)	U-YFD(1) U-D3(1)
YC28U26	1/0(.368)	7	4/0(.528)	19	#6(.162)	1	2/0(.414)	7	1/0(.398)	6-1	4/0(.563)	6-1	#6(.198)	6-1	1/0(.398)	6-1	2.06 [52]	2.12 [54]	---	H	DIE SET	-----	U-H(2)	U-H(2)	U-H(2)
YPC28U28	3/0(.464)	7	4/0(.522)	7	2/0(.414) 	7	4/0(.522)	7	3/0(.502)	6-1	4/0(.563)	6-1	2/0(.447) 	6-1	4/0(.563)	6-1	1.98 [50]	2.75 [70]	BLUE ---	D3	DIE SET	----- PERM GR(4)	U-YFD(2) U-D3(2)	U-YFD(2) U-D3(2)	U-YFD(2) U-D3(2)
YPC28R28A	3/0(.464)	7	4/0(.522)	7	3/0(.464)	7	4/0(.522)	7	3/0(.502)	6-1	4/0(.563)	6-1	-----	---	3/0(.502)	6-1	1.70 [43]	2.75 [70]	BLUE ---	D3	DIE SET	----- PERM GR(4)	U-YFD(2) U-D3(2)	U-YFD(2) U-D3(2)	U-YFD(2) U-D3(2)
YC33R26U	300 Kcmil (.829)	37	397.5 Kcmil (.724)	19	#6(.162)	1	2/0(.414)	7	266.8 Kcmil (.633)	6-7	336.4 Kcmil (.741)	30-7	#6(.198)	6-1	1/0(.398)	6-1	2.25 [57]	2.12 [54]	---	R	DIE SET	-----	U-R(2)	U-R(2)	U-R(2)
YPC28U26	1/0(.368)	7	4/0(.528)	19	#3(.229)	1	2/0(.414)	7	1/0(.398)	6-1	4/0(.563)	6-1	#4(.250)	6-1	1/0(.398)	6-1	2.03 [52]	2.75 [70]	BLUE ---	D3	DIE SET	----- PERM GR(4)	U-YFD(2) U-D3(2)	U-YFD(2) U-D3(2)	U-YFD(2) U-D3(2)




- NOTES:
- MATERIAL: ALUMINUM.
 -  CATALOG # PT6515 ADAPTOR IS REQUIRED TO USE "U" DIES IN Y45 SERIES TOOLS.
 -  CATALOG # PUADP-1 ADAPTOR IS REQUIRED TO USE "U" DIES IN Y46 SERIES TOOLS.
 -  FOR ANY COMBINATION OF ALUM. AND ACSR.
 -  FOR COMBINATIONS OF DISSIMILAR METALS: ALUM. TO COPPER OR ACSR TO COPPER.
 -  2/0 STR. CU. OR AL. AND 2/0 ACSR MAY ALSO BE INSTALLED IN THE RUN GROOVE OF THE YPC28U28 WHEN THE TAP GROOVE CONDUCTOR IS 3/0 STR. OR LARGER.
 - CONNECTORS ARE TO BE PACKAGED IN POLYBAG AND SEALED.
 - DIMENSIONS IN BRACKETS [] ARE IN MILLIMETERS ROUNDED OFF TO THE NEAREST MILLIMETER, UNLESS OTHERWISE NOTED, AND ARE FOR REFERENCE ONLY.



TO ORDER BURNDY® PRODUCTS CALL
UNITED STATES
1-800-346-4175 (LONDONDERRY, NH)
CANADA:
1-800-361-6975 (QUEBEC)
1-800-387-6487 (ALL OTHER PROVINCES)
FOR PRODUCT INFO: <http://www.burndy.com>

CRIMPIT® (CU. TO ALUM. ACSR)	
ITEM NO:	---
CAT. NO:	YC-R-U, YC-U, YPC-U & YPC-R-A
DRAWN BY:	MJM 03/17/1958
CHECKER:	ERD 02/27/1963
DSN APPVL:	ESR 03/04/1963
MFG APPVL:	---
QA APPVL:	D.VARIO 09/09/1996
MKT APPVL:	R.PELLETIER08/14/1996
PROD FAM:	---
PROJECT #:	---
DOCUMENT TYPE:	Sales
REL LEVEL:	Released

SCALE: 1.000
DRAWING NO: SD042248-01
REV: D
SHEET 1 OF 1



REV: PEO200