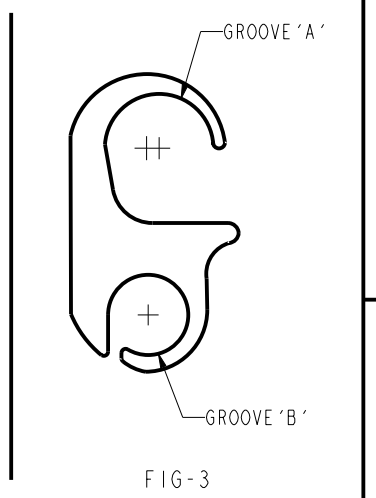
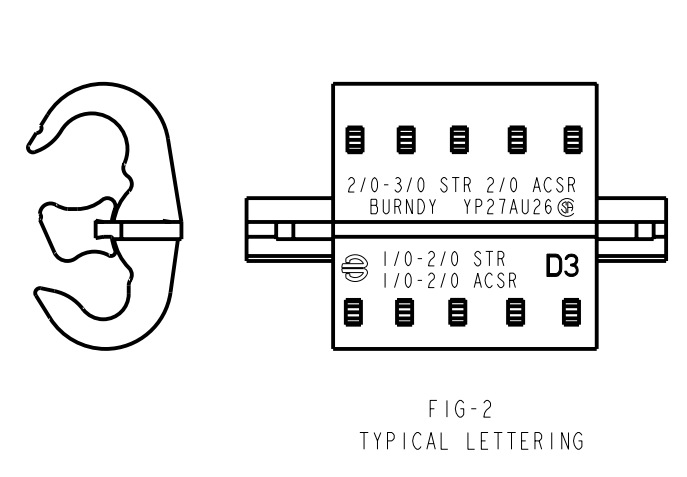
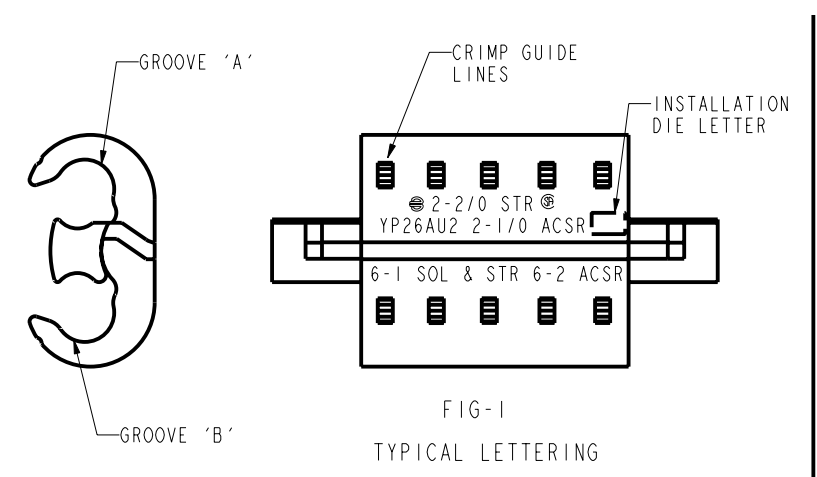
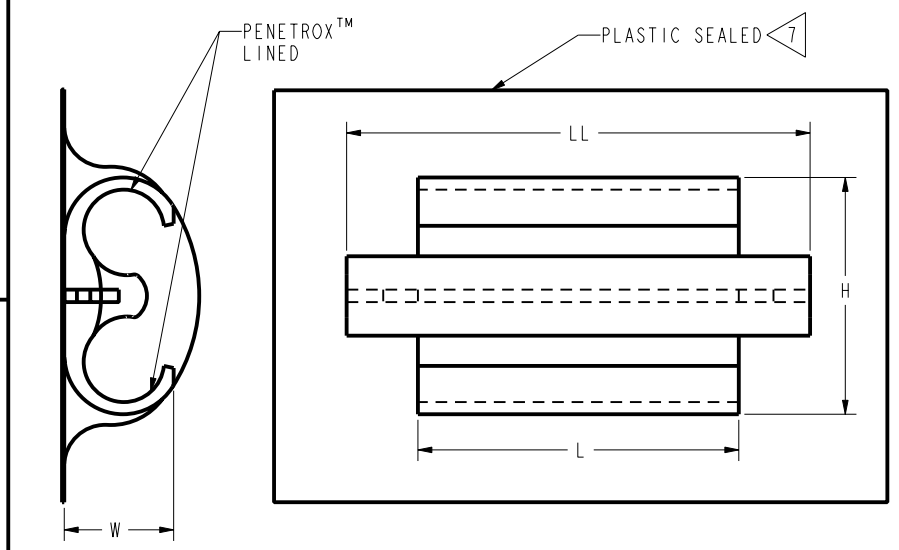
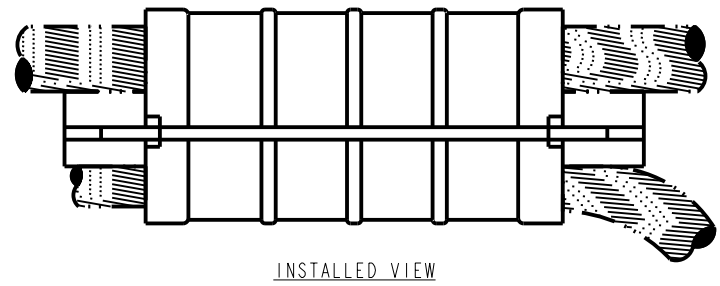


DRAWING NO. SD045569-01	CATALOG NUMBER	FIG. NO.	ACCOMMODATES										H	L	LL	W	DIE INDEX	INSTALLATION DATA			
			GROOVE 'A'					GROOVE 'B'										HYTOOL™ (# OF CRIMPS)		HYTOOL™ (# OF CRIMPS)	
			SOLID CU. OR AL.	STRANDED CU. OR AL.	STRANDED COMPRESSED	A.C.S.R.	A.C.S.R. COMPRESSED	SOLID CU. OR AL.	STRANDED CU. OR AL.	STRANDED COMPRESSED	A.C.S.R.	A.C.S.R. COMPRESSED						MD6 DIE INSERT	Y35 DIE SET		
	YP2U3	1	6,4,3,2	6,4,3	6,4,3,2	6,4	6,4,3	6,4,3,2	6,4,3	6,4,3,2	6,4	6,4,3	1.30	1.50	2.50	.72	0	W-0	4	U-0	1
	YP26AU2	1	1,1/0,2/0,3/0	2,1,1/0,2/0	2,1,1/0,2/0	3,2,1,1/0	2,1,1/0,2/0	6,4,3,2,1,1/0	6,4,3,2,1	6,4,3,2,1	6,4,3,2	6,4,3,2,1	1.30	1.50	2.50	.72	0	W-0	4	U-0	1
	YP25U25	2	2/0,3/0	1,1/0,2/0	1/0,2/0	1,1/0	1/0,2/0	2/0,3/0	1,1/0,2/0	1/0,2/0	1,1/0	1/0,2/0	1.70	1.69	2.69	.97	D3	NONE REQUIRED	4	U-D3	1
	YP27AU4	2	2/0,3/0,4/0	1/0,2/0,3/0	2/0,3/0	1/0,2/0	1/0,2/0,3/0	6,4,3,2	6,4,3	6,4,3	6,4	6,4,3	1.70	1.69	2.69	.97	D3	NONE REQUIRED	4	U-D3	1
	YP27AU2	2	2/0,3/0,4/0	1/0,2/0,3/0	2/0,3/0	1/0,2/0	1/0,2/0,3/0	2/0,1/0	4,3,2,1	3,2,1	4,3,2	4,3,2,1	1.70	1.69	2.69	.97	D3	NONE REQUIRED	4	U-D3	1
	YP27AU26	2	3/0,4/0	2/0,3/0	3/0	2/0	2/0,3/0	2/0,3/0	1/0,2/0	1/0,2/0,3/0	1,1/0,2/0	1/0,2/0	1.70	1.69	2.69	.97	D3	NONE REQUIRED	4	U-D3	1
	YPC28U4	3	---	3/0,4/0	4/0,250,266.8	3/0,4/0	4/0,266.8(18-1)	6,4,3,2	6,4,3	6,4,3	6,4	6,4,3	1.70	1.69	2.69	.97	D3	NONE REQUIRED	4	U-D3	1
	YP28U2	2	---	4/0	4/0,250,266.8	3/0,4/0	4/0,266.8(18-1)	2,1,1/0	4,3,2,1	3,2,1	4,3,2	4,3,2,1	1.70	1.69	2.69	.97	D3	NONE REQUIRED	4	U-D3	1
	YP28U26	2	---	4/0	4/0,250,266.8	3/0,4/0	4/0,266.8(18-1)	2/0,3/0	1/0,2/0	1/0,2/0,3/0	1,1/0,2/0	1/0,2/0	1.70	1.69	2.69	.97	D3	NONE REQUIRED	4	U-D3	1
	YPC28U28	3	4/0	3/0,4/0	4/0,250,266.8	3/0,4/0	3/0,4/0,266.8(18-1)	4/0	2/0,3/0,4/0	3/0,4/0,250,266.8	2/0,3/0,4/0	3/0,4/0,266.8(18-1)	1.98	2.75	---	.90	---	---	---	2	
	YPC28R28A	3	---	3/0,4/0	4/0,250,266.8	3/0,4/0	4/0,266.8(18-1)	---	3/0,4/0	4/0	3/0	4/0	1.70	2.75	---	.95	---	---	---	2	
	YP26AU4	1	1,1/0,2/0,3/0	2,1,1/0,2/0	2,1,1/0,2/0	3,2,1,1/0	2,1,1/0,2/0	6,4,3,2,1,1/0	6,4,3,2,1	6,4,3,2,1	6,4,3,2	6,4,3,2,1	1.30	1.50	2.50	.72	0	W-0	4	U-0	1
	YP26AU263	1	1/0	2,1/0	2/0	2,1/0	---	1/0	2	---	2	---	1.30	1.50	2.50	.72	0	W-0	4	U-0	1



- NOTES:
- 1 FOR CONDUCTOR COMBINATIONS OF ALUM. TO ALUM. OR ALUM. TO COPPER.
 - 2 TAKES UP TO #2 ACSR MAX. IN EITHER GROOVE IF OTHER WIRE CONTAINS #2 SOL. OR SMALLER.
 - 3 TAKES DOWN TO #2 ACSR MIN. IN EITHER GROOVE IF OTHER GROOVE WIRE IS 1/0 STR. OR LARGER.
 - 4 IT IS RECOMMENDED THAT THE FIRST CRIMP BE MADE IN THE CENTER OF THE YP25U25, YP28U2 & YPC28U26. STAMPED LETTERING ON BODY OF CONNECTOR INDICATES THIS PROCEDURE.
 - 5 2/0 STR. CU. AL. AND 2/0 ACSR MAY ALSO BE INSTALLED IN GROOVE 'A' OF THE YPC28U28 WHEN GROOVE 'B' CONDUCTOR IS 3/0 STR. OR LARGER.
 - 6 CAN ALSO ACCOMMODATE 5/16-7/16 STEEL IN GROOVE 'A' AND 1/4-5/16 STEEL IN GROOVE 'B'.
 - 7 VAC FORM PACKAGED OR SEALED IN POLYETHYLENE BAG.

8. INSTALLATION NOTES:
- (A) CLEAN RUN & TAP CONDUCTORS WHETHER COPPER OR ALUMINUM, WITH WIRE BRUSH OR ABRASIVE CLOTH BEFORE INSTALLING CABELOK™ CRIMPIT™.
 - (B) IF RUN CONDUCTOR IS COPPER INSTALL CONNECTOR SO THAT THE TAP WILL BE ABOVE RUN.
 - (C) THE CABELOK™ HAS A BENDABLE SPACER FOR HOLDING CONDUCTORS IN PLACE PRIOR TO CRIMPING.



MATERIAL: ALUMINUM
 REFERENCE: FD045359, FD045313, XC061334
 XD061496, XD061654 & FC041067

TO ORDER BURNDY® PRODUCTS CALL		CABELOK™ CRIMPIT™	
UNITED STATES 1-800-346-4175 (LONDONDERRY, NH)		ITEM NO: 160398	DRAWING NO
CANADA: 1-800-361-6975 (QUEBEC) 1-800-387-6487 (ALL OTHER PROVINCES)		CAT. NO: YP-AU, YP-U, YC-U, YPC-U (TABLE)	REV
FOR PRODUCT INFO: http://www.burndy.com		DRAWN BY: RHS 01/31/64	SCALE: 7:4
		CHECKER: MTM 02/24/64	PROJECT #:
		DSN APPVL: MG 02/29/64	SIZE
		MFG APPVL: --	DOCUMENT TYPE: Sales
		QA APPVL: --	REL LEVEL: Released
		MKT APPVL: --	
		PROJ FAM: O.H. BARE CONNECTORS	

REV	DATE	DESCRIPTION	ECO	BY	C'H'K.
D	1/11/2001 12:00:00 AM	REDRAW IN PROE	19224	BSB	BSK

REV: PE0200