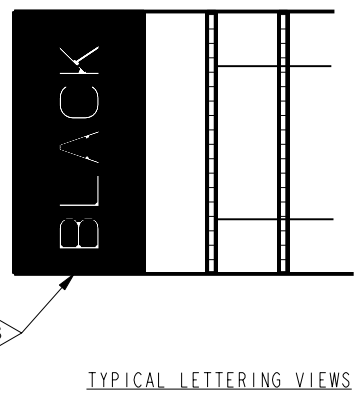
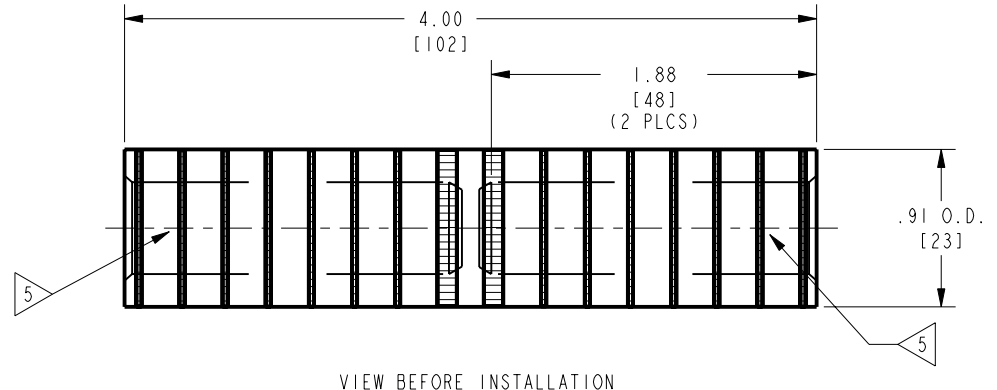
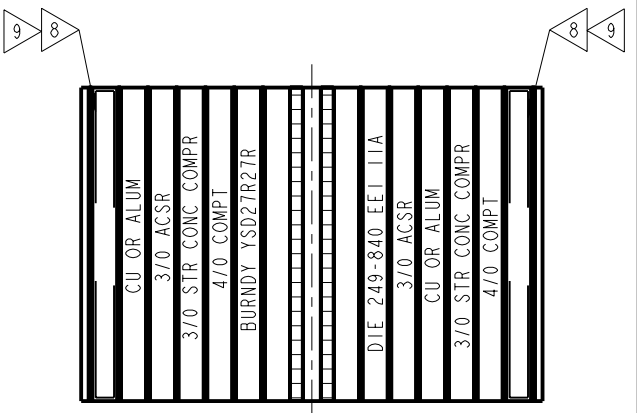


DRAWING NO.
SD046623

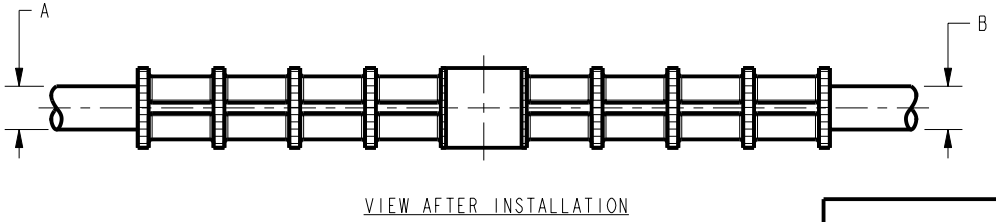
CATALOG NUMBERS	A				B				COLOR CODE	
	ACSR		ALUMINUM & COPPER	ALUMINUM COMPACT	ACSR		ALUMINUM & COPPER	ALUMINUM COMPACT	A	B
	SIZE	STR.			SIZE	STR.				
YSD2R2R	#2 (.316) #2 (.325)	6-1 7-1	#1 STR (.328) #2 STR (.292)	1/0 (.336)	#2 (.316) #2 (.325)	6-1 7-1	#1 STR (.328) #2 STR (.292)	1/0 (.336)	RED	RED
YSD25R2R	1/0 (.398)	6-1 19	1/0 STR (.368) 1/0 STR (.373)	2/0 (.376)	1/0 (.398)	6-1	1/0 STR (.368) 2/0 (.376)	2/0 (.376)	YELLOW	YELLOW
YSD25R25R		6-1 19								
YSD26R2R	2/0 (.447)	6-1 19	2/0 STR (.414) 2/0 STR (.419)	3/0 (.423)	#2 (.316) #2 (.325)	6-1 7-1	#1 STR (.328) #2 STR (.292)	1/0 (.336)	GRAY	RED
YSD26R25R					1/0 (.398)	6-1	1/0 STR (.368) 2/0 (.376)	2/0 (.376)		YELLOW
YSD26R26R					2/0 (.447)		2/0 STR (.414) 3/0 (.423)	3/0 (.423)		GRAY
YSD27R2R	3/0 (.502)	6-1 19	3/0 STR (.464) 3/0 STR (.470)	4/0 (.475)	#2 (.316) #2 (.325)	6-1 7-1	#1 STR (.328) #2 STR (.292)	1/0 (.336)	BLACK	RED
YSD27R25R					1/0 (.398)	6-1	1/0 STR (.368) 1/0 STR (.373)	2/0 (.376)		YELLOW
YSD27R26R					2/0 (.447)		2/0 STR (.414) 3/0 (.423)	3/0 (.423)		GRAY
YSD27R27R					3/0 (.502)		3/0 STR (.464) 4/0 (.475)	4/0 (.475)		BLACK
YSDG27U27	2									

REV	DATE	DESCRIPTION	ECO	BY	C'H'K.
B	8/29/2009 12:00:00 PM	REDRAWN TO PROE	17955	IA	MA

INSTALLATION TOOLING (# CRIMPS)									
DIE INFORMATION		TYPE	MECHANICAL			HYDRAULIC			
EET DIE INDEX	DIE INDEX		OUR840	MD6 MD7	Y35, Y39, Y750, BAT35, BAT750	Y46	Y45	Y48B	Y60BHU
I1A (4)	249	DIE SET	X249 (8)	W249 (8)	U249 (2)	U249 (2)	C249 (1)	C249 (1)	L249 (1)
----	K840	DIE SET	X840 (7)	WK840 (7)	UK840T (4)	UK840T (4)	UK840T (4)	----	----



- NOTES:
- MATERIAL: ALUMINUM.
 - FINISH: YSDG27U27 IS TIN PLATED. ALL OTHER CONNECTORS HAVE NO FINISH REQUIREMENTS.
 - CATALOG NO. PT6515 ADAPTER IS REQUIRED TO USE "U" DIES IN Y45 SERIES TOOLS.
 - CATALOG NO. PUADP-1 ADAPTER IS REQUIRED TO USE "U" DIES IN Y46 SERIES TOOLS.
 - BARRELS PARTIALLY FILLED WITH PENETROX™ AND PACKAGED IN POLYBAG.
 - SCRATCH BRUSHING OF ALUMINUM CONDUCTORS DRY IS RECOMMENDED BEFORE MAKING INSTALLATION.
 - DIMENSIONS IN BRACKETS [] ARE IN MILLIMETERS ROUNDED OFF TO THE NEAREST MILLIMETER, UNLESS OTHERWISE NOTED, AND ARE FOR REFERENCE ONLY.
 - COLOR NAME TO BE MARKED IN COLOR BAND AS SHOWN. SEE TABLE ABOVE FOR APPROPRIATE COLOR NAME.



TO ORDER BURNDY® PRODUCTS CALL		LINKIT™ (ALUMINIUM) SPECIAL	
UNITED STATES: 1-800-346-4175 (LONDONDERRY, NH)		ITEM NO: --	CAT. NO: YSD-R-R, & YSD-R-W (TABLE)
CANADA: 1-800-361-6975 (QUEBEC) 1-800-387-6487 (ALL OTHER PROVINCES)		DRAWN BY: BAL 07/20/60	CHECKER: E.P.G 07/22/60
FOR PRODUCT INFO: http://www.burndy.com		DSN APPVL: C.CHADBOURNE 07/11/96	MFG APPVL: --
		GA APPVL: J.BRODEUR 07/15/96	MKT APPVL: R.PELLITIER 07/12/96
		SCALE: 1:1	DRAWING NO: SD046623
		PROJECT #: --	REVISION: B
		DOCUMENT TYPE: Sales	SHEET 1 OF 2
		REL LEVEL: Released	

REV: PE0200