

REV	DATE	DESCRIPTION	ECO	BY	C'H'K.
B	03/26/2012 21:00:00 PM	FIX DRAWINGS FOR YTS48RG3 SPLICE KIT CHANGE TUBE NUMBER REF.	27078	DD	MB

CATALOG NUMBER	ITEM NUMBER	ACSR CONDUCTOR					ALUMINUM SLEEVE						STEEL SLEEVE											
		CODE NAME	Kcmil	O.D.		STRANDING	CATALOG NUMBER	O.D.		L		INSTALLATION DATA		CATALOG NUMBER	LL		B		INSTALLATION DATA					
				IN.	[MM]			IN.	[MM]	DIE INDEX NO.	BURNDY <sup>®</sup> HYPRESS & DIE Y60BHU	T&B DIE	LBS/C		GAL/C	IN.	[MM]	IN.	[MM]	DIE INDEX NO.	BURNDY <sup>®</sup> HYPRESS & DIE Y60BHU	T&B DIE		
YTS451RG5	195527	STRALING	715.5	1.051	[26.70]	26-7	YTS451RG5PI	1.80	[45.7]	28.96	[735.6]	725	L725	150	32.3	3.5	YTS48RS	9.00	[228.6]	4.00	[101.6]	726	L726	82
YTS48RG3	195500	---	954	1.196	[30.38]	24-7	YTS48RG3PI	1.97	[50.0]	29.17	[740.9]	727	L727	161	37.9	4.1	YTS48RS	9.00	[228.6]	4.00	[101.6]	726	L726	82
YTS52RG2	10094216	PHEASANT	1272	1.382	[35.10]	54-19	YTS52R	2.25	[57.2]	41.07	[1043.2]	728	L728	189	79.5	8.6	YTS59RS	9.10	[231.1]	4.07	[103.4]	726	L726	82
YTS59RTG2	10102064	MARTIN	1351.5	1.424	[36.17]	54-19	YTS59RT	2.50	[63.5]	42.91	[1089.9]	735	L735	214	142.3	15.4	YTS59RS	9.10	[231.1]	4.07	[103.4]	726	L726	82
YTS595RTG1	30011749	---	---	---	---	---	---	---	---	---	---	---	---	---	---	---	---	---	---	---	---	---	---	---
YTS595RTG2	30014706	BLUEBIRD	2156	1.762	[44.75]	84-19	YTS595RT	2.75	[69.9]	46.84	[1189.7]	791	---	---	314.2	34	YTS48RS	9.00	[228.6]	4.00	[101.6]	726	L726	82

D

D

C

C

B

B

A

A

VIEW BEFORE INSTALLATION

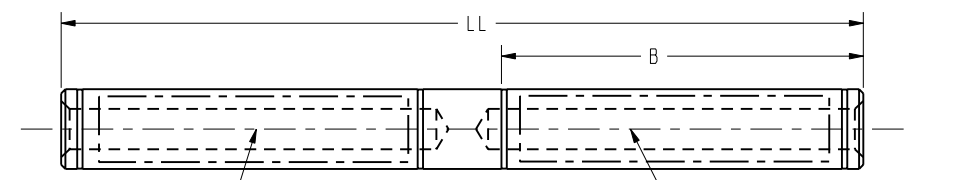


FIG. 2  
STEEL SLEEVE

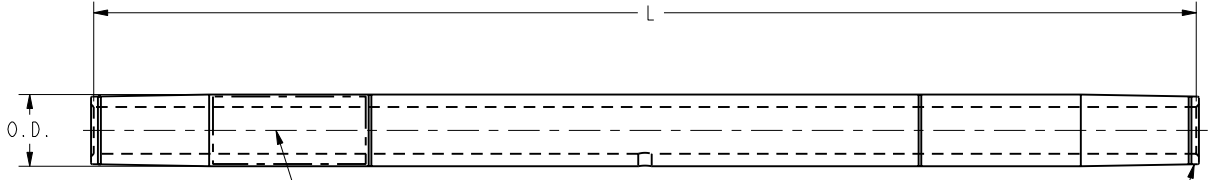


FIG. 1  
ALUMINUM SLEEVE  
PROTECTIVE END CAPS (2 PLACES)

**BURNDY**  
HYSPLICE™ YTS48RS  
FOR STEEL CORE-ACSR, ACSS  
715.5, 795 (26-7), 954 (24-7)  
556.5 (30-7) 954, 1033.5 (54-7)  
1113, 1192.5 (54-19)  
2515 (76-19), 1780 (84-19)  
START HERE

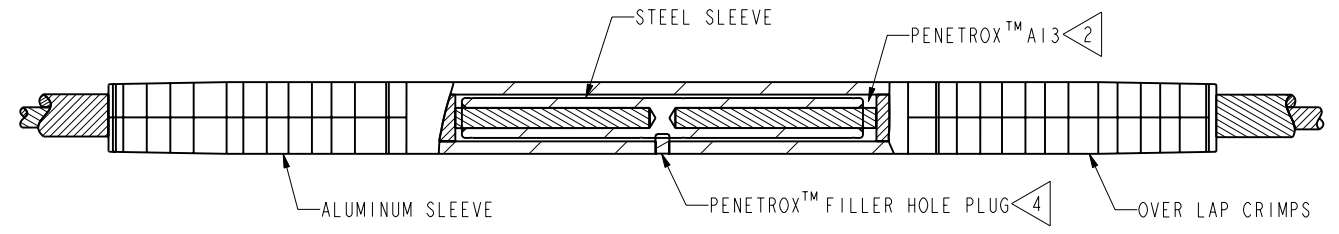
TYPICAL LETTERING

L10176  
OVER LAP CRIMPS  
USE BURNDY DIE 726  
BURNDY PRESS Y60BHU  
START HERE

TYPICAL LETTERING

**BURNDY**  
HYSPLICE™ YTS451RG5PI  
715.5 795 Kcmil ACSR  
26-7 STR  
LL0176  
OVER LAP CRIMPS  
USE BURNDY DIE 725  
USE BURNDY PRESS Y60BHU

TYPICAL LETTERING



VIEW AFTER INSTALLATION

NOTES:

- BURNDY<sup>®</sup> INSTALLATION TOOLING (DIES AND PRESS) NOT INCLUDED. MUST BE ORDERED SEPARATELY.
- BURNDY<sup>®</sup> PENETROX™ A13 NOT INCLUDED AND MUST BE ORDERED SEPARATELY.
- THE EQUIVALENT T&B DIE INDEXES ARE LISTED FOR YOUR CONVENIENCE.
- 10% EXTRA PLUGS WILL BE FURNISHED WITH ALL ORDERS THAT INCLUDE ALUMINUM SLEEVES.
- COMPLETE INSTALLATION INSTRUCTIONS ON DRAWING 30004710.
- THE ALUMINUM SLEEVE AND THE THREADED FILLER PLUG ARE INCLUDED IN THIS CATALOG NUMBER.
- THE ALUMINUM SLEEVE, THE STEEL SLEEVE, AND THE THREADED FILLER PLUG ARE INCLUDED IN THIS CATALOG NUMBER.
- DIMENSIONS IN BRACKETS [ ] ARE IN MILLIMETERS ROUNDED OFF TO THE NEAREST MILLIMETER, UNLESS OTHERWISE NOTED, AND ARE FOR REFERENCE ONLY.

TO ORDER BURNDY <sup>®</sup> PRODUCTS CALL		FULL TENSION HYSPLICE™ (ACSR)	
UNITED STATES 1-800-346-4175 (LONDONDERRY, NH)		ITEM NO: SEE TABLE	CAT. NO: SEE TABLE
CANADA: 1-800-361-6975 (QUEBEC) 1-800-387-6487 (ALL OTHER PROVINCES)		DRAWN BY: N.D.KANNAN 04/27/2011	CHECKER: P.WALTZ 05/03/2011
FOR PRODUCT INFO: <a href="http://www.burndy.com">http://www.burndy.com</a>		DSN APPVL: P.WALTZ 05/03/2011	MFG APPVL: J.HEAD 05/03/2011
		QA APPVL: T.WATTS 05/03/2011	MKT APPVL: D.HAMILTON 05/03/2011
		SCALE: 1:1	PROJ. NO: --
		DRAWING NO: SD067511-01	REV: B
		SIZE: D	SHEET 1 OF 1

REV: PE0200