

CATALOG NUMBER	CONDUCTOR RANGE CONCENTRIC ROUND OR COMPRESSED OR COMPACT-STR									FIG. NO.	B	C	D	K DIA.	L	O.D.	T	N	DIE INDEX	BURNDY® INSTALLATION TOOLING (# CRIMPS)						
	ACSR			ALUMINUM			COPPER													MECHANICAL		HYDRAULIC		DIELESS (# CRIMPS)	WIRE STRIP LENGTH	
	AWG	kcmil	STR	AWG	kcmil	STR	AWG	kcmil	STR											MD6	OUR840	Y35, Y39, Y750, BAT35, BAT750, PAT750	Y45			Y46
YRA8CU1	---	---	---	8 STR	---	7	8 SOL	---	---	2	.960 [24]	.91 [23]	1.19 [30]	.56 [14]	2.62 [67]	.64 [16]	.29 [7]	.53 [13]	BG K5/8 243 EEI DIE NO. 8A	BG (3) WBG (1) W243 (1)	XBG (4) XNBG (2)	U-BG (1) UK5/8-I T(3) U243 (1)	U-BG (1) UK5/8-IT (3) U243 (1)	U-BG (1) UK5/8-IT (3) U243 (1)	Y644M (1) BAT644M (1) PAT644M (1)	1"
YRA6CU1	6	---	6-1	6 STR 4 SOL 5 STR	---	7	6 STR 4 SOL 5 STR	---	7	2	.960 [24]	.91 [23]	1.19 [30]	.56 [14]	2.62 [67]	.64 [16]	.29 [7]	.53 [13]								
YRA4CU1	4	---	6-1	4 STR 2 SOL 3 STR	---	7	4 STR 2 SOL 3 STR	---	7	2	.960 [24]	.91 [23]	1.19 [30]	.56 [14]	2.62 [67]	.64 [16]	.29 [7]	.53 [13]								
YRA2CU1	---	---	---	2 STR	---	7	2 STR	---	7	2	.960 [24]	.91 [23]	1.19 [30]	.56 [14]	2.62 [67]	.64 [16]	.29 [7]	.53 [13]								
YRA1CU1	2	---	6-1	1 STR 2 STR	---	7	1 STR 2 STR	---	7	2	.960 [24]	.91 [23]	1.19 [30]	.56 [14]	2.62 [67]	.64 [16]	.29 [7]	.53 [13]								
YRA25A1	---	---	---	1/0 STR 1/0 STR	---	7	---	---	---	2	.960 [24]	.91 [23]	1.19 [30]	.56 [14]	2.62 [67]	.64 [16]	.29 [7]	.53 [13]								
YRAL4CU	4	---	6-1	4 STR 2 SOL 2 STR	---	7	4 STR 2 SOL 2 STR	---	7	1	1.43 [36]	.91 [23]	1.28 [33]	.56 [14]	3.19 [81]	.91 [23]	.25 [6]	.62 [16]	249 K840 EEI DIE NO. 11A	W249 (3) W-K840 (6)	X249 (6)	U249 (2) UK840T (3)	U249 (2) UK840T (3)	U249 (2) UK840T (3)	Y644M (1) BAT644M (1) PAT644M (1)	1 1/2"
YRAL1CU	2	---	6-1	1 STR 2 STR	---	7	1 STR 2 STR	---	7	1	1.43 [36]	.91 [23]	1.28 [33]	.56 [14]	3.19 [81]	.91 [23]	.25 [6]	.62 [16]								
YRA25U	1/0	---	6-1	1/0 STR 1/0 STR	---	7	1/0 STR 1/0 STR	---	7	1	1.43 [36]	.91 [23]	1.28 [33]	.56 [14]	3.19 [81]	.91 [23]	.25 [6]	.62 [16]								
YRA25UJ38	1/0	---	6-1	1/0 STR 1/0 STR	---	7	1/0 STR 1/0 STR	---	7	1	1.43 [36]	.91 [23]	1.28 [33]	.41 [10]	3.19 [81]	.91 [23]	.25 [6]	.62 [16]								
YRA26U	2/0	---	6-1	2/0 STR 2/0 STR	---	7	2/0 STR 2/0 STR	---	7	1	1.43 [36]	.91 [23]	1.28 [33]	.56 [14]	3.19 [81]	.91 [23]	.25 [6]	.62 [16]								
YRA26UJ38	2/0	---	6-1	2/0 STR 2/0 STR	---	7	2/0 STR 2/0 STR	---	7	1	1.43 [36]	.91 [23]	1.28 [33]	.41 [10]	3.19 [81]	.91 [23]	.25 [6]	.62 [16]								
YRA27A	3/0	---	6-1	3/0 STR	---	19	---	---	---	1	1.43 [36]	.91 [23]	1.28 [33]	.56 [14]	3.19 [81]	.91 [23]	.25 [6]	.62 [16]	249 K840 EEI DIE NO. 11A	W249 (3) W-K840 (6)	X249 (6)	U249 (2) UK840T (3)	U249 (2) UK840T (3)	U249 (2) UK840T (3)	Y644M (1) BAT644M (1) PAT644M (1)	1 1/2"
YRA27U	---	---	---	3/0 STR	---	19	3/0 STR	---	19	1	1.43 [36]	.91 [23]	1.28 [33]	.56 [14]	3.19 [81]	.91 [23]	.25 [6]	.62 [16]								
YRA28A	4/0	---	6-1	4/0 STR	250	19	---	---	---	1	1.43 [36]	.91 [23]	1.28 [33]	.56 [14]	3.19 [81]	.91 [23]	.25 [6]	.62 [16]								
YRA28U	---	---	---	4/0 STR	---	19	4/0 STR	---	19	1	1.43 [36]	.91 [23]	1.28 [33]	.56 [14]	3.19 [81]	.91 [23]	.25 [6]	.62 [16]								
YRA28UJ38	---	---	---	4/0 STR	---	19	4/0 STR	---	19	1	1.43 [36]	.91 [23]	1.28 [33]	.41 [10]	3.19 [81]	.91 [23]	.25 [6]	.62 [16]								
YRA28U2N	4/0	---	6-1	4/0 STR	---	19	4/0 STR	---	19	3	1.88 [48]	1.25 [32]	3.12 [79]	.56 [14]	5.75 [146]	.91 [23]	.25 [6]	.62 [16]								
YRA25CA1	---	---	---	1/0 STR 1/0 STR	---	7	1/0 STR 1/0 STR	---	7	2	1.49 [38]	.91 [23]	1.19 [30]	.56 [14]	3.12 [79]	.64 [16]	.29 [7]	.53 [13]	BG K5/8 243 EEI DIE NO. 8A	BG (6) WBG (2) W243 (2)	XBG (8) XNBG (4)	U-BG (4) UK5/8-IT (2) U243 (2)	U-BG (4) UK5/8-IT (2) U243 (2)	U-BG (4) UK5/8-IT (2) U243 (2)	Y644M (1) BAT644M (1) PAT644M (1)	1 3/4"
YRA31U	---	336.4	18-1	---	350	---	---	350	---	1	2.36 [60]	1.25 [32]	1.50 [38]	.56 [14]	4.63 [118]	1.15 [29]	.38 [10]	.62 [16]								
YRA31U2N	---	336.4	18-1	---	350	---	---	350	---	3	2.36 [60]	1.25 [32]	3.00 [76]	.56 [14]	5.88 [149]	1.15 [29]	.38 [10]	.62 [16]								

- NOTES:
- USE P-UADP-1 ADAPTOR WITH U-DIES IN Y46 SERIES TOOLS.
 - CONNECTOR BARREL IS FACTORY FILLED WITH "PENETROX"™ AND SEALED WITH CAPPLUG™.
 - ALUMINUM CONDUCTORS MUST BE SCRATCH-BRUSHED BEFORE INSERTION INTO CONNECTOR BARREL.
 - BEFORE TERMINATING, SCRATCH-BRUSH TONGUE CONTACT SURFACE DRY, THEN APPLY PENETROX™ A. PENETROX™ A CAN BE PURCHASED FROM BURNDY® CORP. IN CANS OR PLASTIC SQUEEZE BOTTLES.
 - OVERLAP CRIMPS.
 - YRA1CU1 IS NOT RECOMMENDED FOR USE WITH #2 AWG COMPRESSED OR #2 AWG COMPRESSED OR COMPACT CABLE STRANDING. USE YRA2CU1.
 - IF TIN PLATING IS DESIRED ADD THE SUFFIX "TN" AT THE END OF THE CATALOG NUMBER.
 - MATERIAL: ALUMINUM.
 - CATALOG #PT6515 ADAPTER IS REQUIRED TO USE U-DIES IN Y45 SERIES TOOLS.
 - TO ORDER THIS PART WITH GRAY CAPPLUG™ ADD SUFFIX "GRAY".
 - TO ORDER THIS PART WITH PINK CAPPLUG™ ADD SUFFIX "PINK".

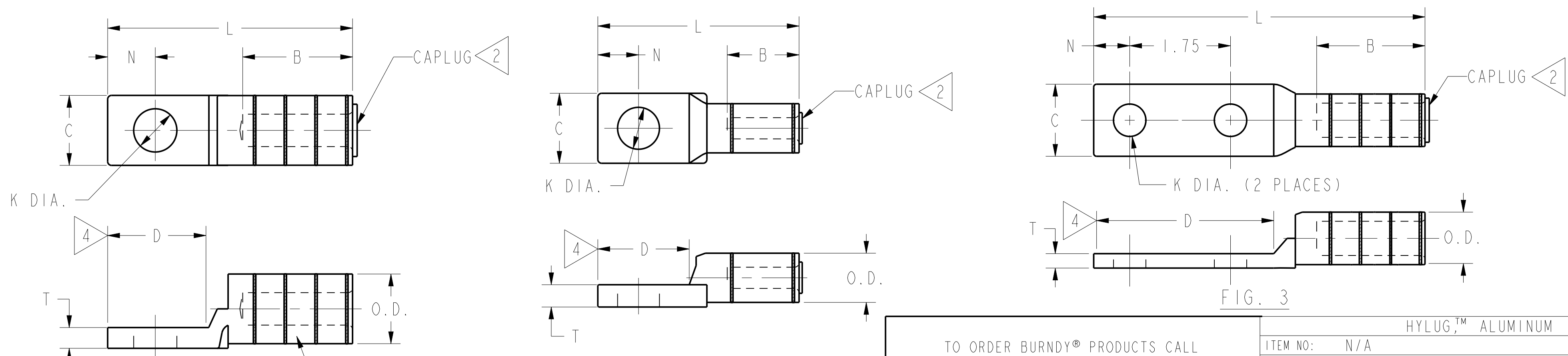


FIG. 1 TYPICAL LETTERING ON BARREL

FIG. 2

BURNDY

YRA25U
1/0 STR-1/0 ACSR
DIE 249-840-EE111A

TO ORDER BURNDY® PRODUCTS CALL

UNITED STATES
1-800-346-4175 (LONDONDERRY, NH)

CANADA:
1-800-361-6975 (QUEBEC)
1-800-387-6487 (ALL OTHER PROVINCES)

FOR PRODUCT INFO: <http://www.burndy.com>

HYLUG™ ALUMINUM

ITEM NO:	N/A
CAT. NO:	YRA-U, YRA-A & YRAL-CU (TABLE)
DRAWN BY:	KGM 5/1/74
CHECKER:	DEW 5/1/74
DSN APPVL:	Z WHITEY 11/12/2014
MFG APPVL:	H JOE 11/12/2014
QA APPVL:	K CHERYL 11/12/2014
MKT APPVL:	H JEFFERSON 11/12/2014
PROD FAM:	CM&R COMPRESSION
DRAWING NO:	SD077273-01
PROJECT #:	---
DOCUMENT TYPE:	Sales
REL LEVEL:	Released
SCALE:	1:1
SHEET:	1 OF 1

REV	DATE	DESCRIPTION	ECO	BY	C'H'K.
C	10/31/2014 00:00:00 AM	FOCUS REQUEST	38246	IM	MB