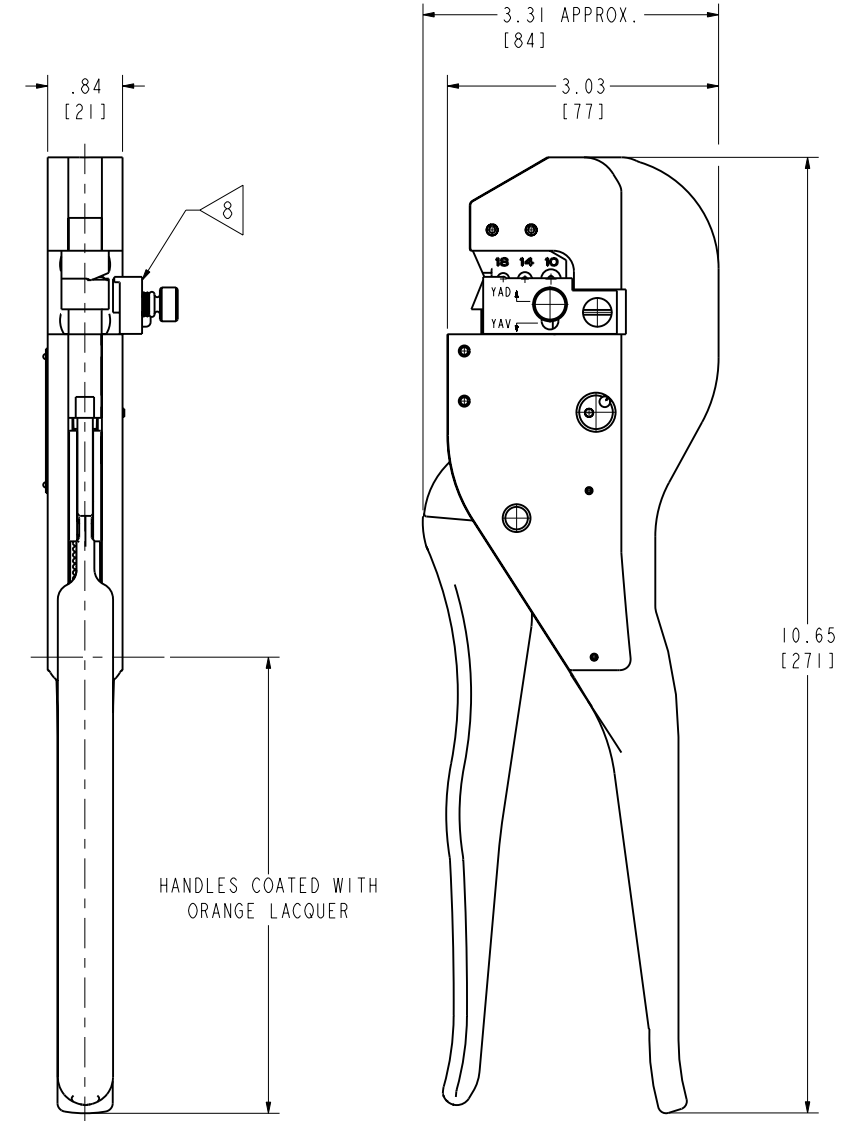
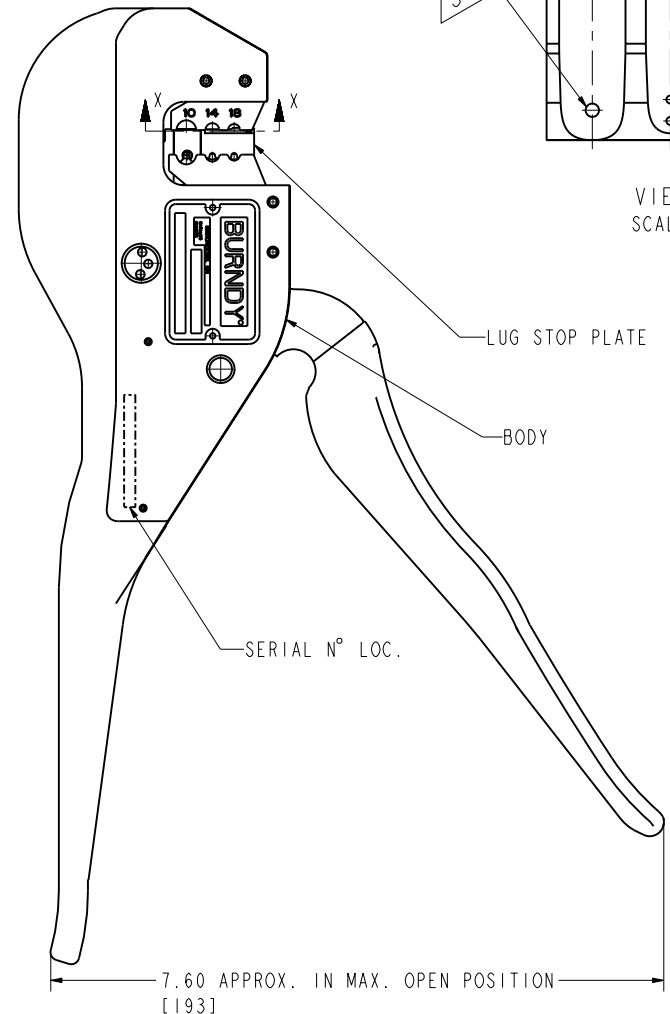
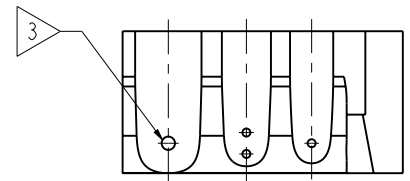
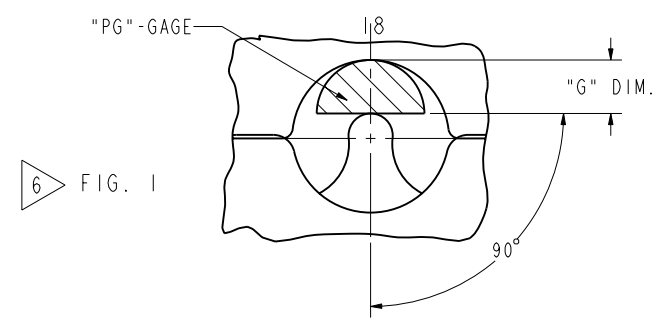
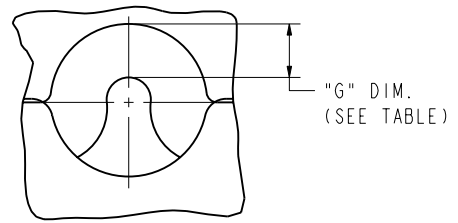


| REV | DATE | DESCRIPTION | ECO | BY | C'H'K. |
|-----|------------------------|---|-------|----|--------|
| A | 05/03/2012 00:00:00 AM | *** DRP *** DOCUMENT RE-DRAW PROCESS | 27359 | DD | MB |

| GROOVE MARKING | ACCOMMODATES | | | CONDUCTOR SIZES | |
|----------------|-----------------------|--------------------|----------------------------|----------------------------|----------------------------|
| | CONNECTOR SIZES | | CONDUCTOR SIZES | | SOL. CU. WIRE AWG. SIZE |
| | CU. HYLUG™ YAV YAD | CU. HYLINK™ YSV | STR. CU. WIRE AWG. SIZE | SOL. CU. WIRE AWG. SIZE | |
| 18 | 18 — 18 | — — — | 18 — — | 22-18 22-18 — | 22-18 — — |
| 14 | 14 — — | — — — | 14 — — | 20-14 20-14 — | 20-12 — — |
| | 12G | — | — | 14-12 | — |
| 10 | 10 — — | — — — | 10 — — | 12-10 12-10 — | 12-10 — — |
| | 9C | — | 9C | 9 | — |

| | GROOVE | | |
|----------|-------------|-------------|-------------|
| | #18 | #14 | #10 |
| "G" MAX. | .061 [2] | .071 [2] | .091 [2] |
| "G" MIN. | .044 [1] | .054 [1] | .074 [2] |
| GAGE NO. | PG 169-1 | PG 170-1 | PG 171-1 |



- NOTES:
- MATERIAL: ALL PARTS ARE STEEL EXCEPT CAST ALUMINUM BODY.
 - RATCHET MECHANISM PERMITS HYTOOL™ TO BE OPENED ONLY AFTER INDENTATION IS COMPLETED.
 - NEST DIE CRIMP GROOVES HAVE RECESSED DOTS WHICH LEAVE RAISED DOTS ON THE BARREL OF THE CRIMPED CONNECTOR FOR POSITIVE CRIMP GROOVE IDENTIFICATION.
 - DIMENSIONS IN BRACKETS [] ARE IN MILLIMETERS, ROUNDED OFF TO THE NEAREST MILLIMETER, UNLESS OTHERWISE NOTED. METRIC DIMENSIONS ARE FOR REFERENCE ONLY.
- TO VERIFY "G" DIMENSION
- CLOSE THE RATCHET TOOL HANDLES FIRMLY WITH ONE HAND.
 - CHOOSE THE PROPER "PG" GAGE AND INSERT IT INTO THE MATCHING GROOVE IN SUCH A MANNER THAT THE FLAT SIDE OF THE GAGE IS PERPENDICULAR TO THE PEAK OF THE INDENTOR.
 - THE "GO" END (DESIGNATED GREEN) MUST PASS BETWEEN THE INDENTOR AND NEST DIE. THE NO GO END (DESIGNATED RED) MUST NOT PASS BETWEEN THE INDENTOR AND NEST DIE.
 - WHEN CRIMPING SPLICES (YSV) REMOVE THE LOCATOR AND VISUALLY CENTER WIRE BARREL OVER THE INDENTOR.

VIEW SHOWING HYTOOL™ WITH HANDLES FULLY OPENED

| | | | |
|---|--|----------------------------|---------------------------|
| TO ORDER BURNDY® PRODUCTS CALL | | HYTOOL™ | |
| UNITED STATES 1-800-346-4175 (LONDONDERRY, NH) | | ITEM NO: 913019 | CAT. NO: MR8G98 |
| CANADA: 1-800-361-6975 (QUEBEC) 1-800-387-6487 (ALL OTHER PROVINCES) | | DRAWN BY: S.ZAMBO 06/15/79 | CHECKER: S.ZAMBO 06/15/79 |
| FOR PRODUCT INFO: http://www.burndy.com | | DSN APPVL: -- | MFG APPVL: -- |
| | | QA APPVL: -- | MKT APPVL: -- |
| | | PROJ #: | SIZE: D |
| | | PROJECT #: | SCALE: 3:8 |
| | | DOCUMENT TYPE: Sales | DRAWING NO: SD082682-01 |
| | | REL LEVEL: Released | SHEET 1 OF 1 |

REV: PE0200