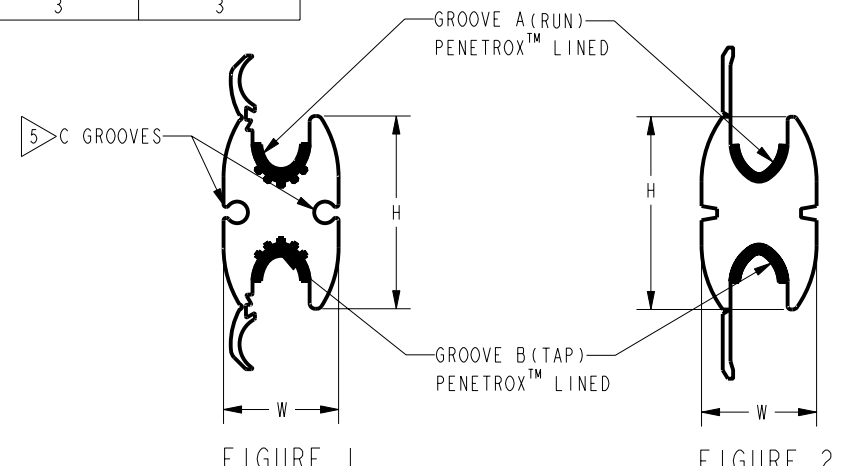
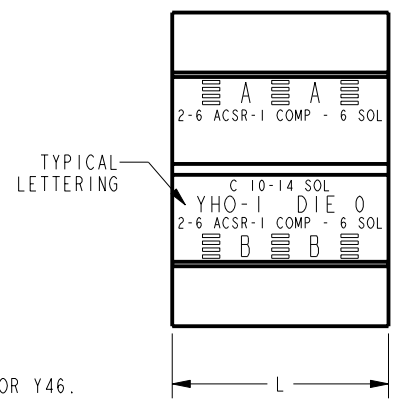
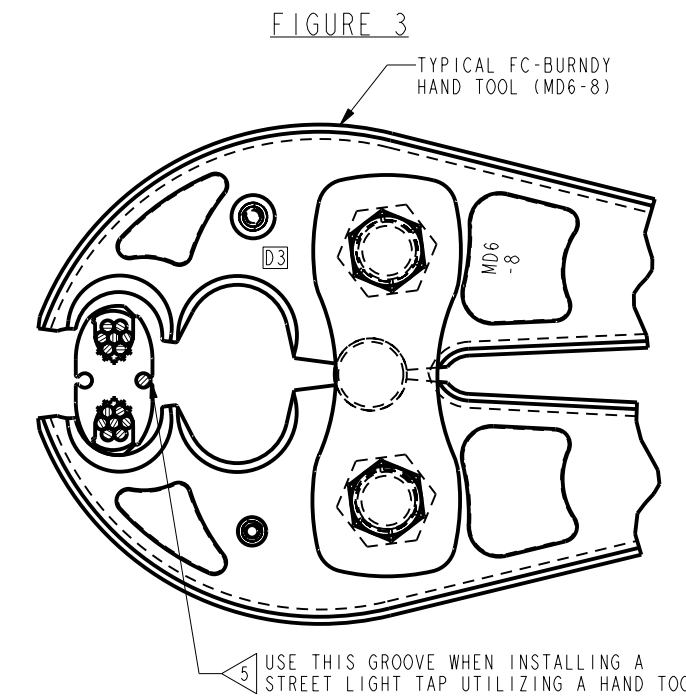


DRAWING NO.
SD206084

		HAND TOOL OR HYDRAULIC 7 CONNECTOR PROGRAM						
CATALOG NUMBER		YHO1	YHO2	YHD3	YHD4	YHD5	YHD6	YHD7
FIGURE NUMBER		1	1	1	1	1	1	1
D	ACSR	#6 - #2	#3 - 1/0	1/0 - 2/0	#1 - 2/0	3/0 - 4/0	3/0 - 4/0	3/0 - 4/0
	STR. CU. OR AL.	#6-#4-#1-7STR	#3 3STR - 2/0	2/0 - 3/0	#1 3STR - 3/0	4/0	3/0 - 4/0	3/0 - 4/0
	SOL. CU. OR AL.	#6-#4-#3-#1	#1 - 2/0	3/0 - 4/0	2/0 - 4/0	250 - 300	250 - 300	250 - 300
	COMPACT ACSR	#6-#4-#1	#2 - 1/0	2/0 - 3/0	1/0 - 3/0	4/0-266 18/1	3/0-266 18/1	3/0-266 18/1
	COMPACT STR CU OR AL	#6-#4-#3-#1	#2 - 2/0	3/0	1/0 - 3/0	4/0 - 266	4/0 - 266	4/0 - 266
	METRIC CABLE RANGE CU. OR AL.	16mm ² -35mm ²	25mm ² -70mm ²	60mm ² -85mm ²	50mm ² -85mm ²	85mm ² -120mm ²	85mm ² -120mm ²	85mm ² -120mm ²
	WIRE DIA. RANGE (in)	.328 - .162	.419 - .260	.470 - .398	.470 - .336	.563 - .475	.563 - .461	.563 - .461
	WIRE DIA. RANGE (mm)	8.3 - 4.1	10.6 - 6.6	11.9 - 10.1	11.9 - 8.5	14.3 - 12.1	14.3 - 11.7	14.3 - 11.7
	ACSR	#6 - #2	#6 - #2	#6 - #2	#1 - 2/0	#6 - #2	#1 - 2/0	3/0 - 4/0
	STR. CU. OR AL.	#6-#4-#1-7STR	#6-#1 19STR	#6-#1 19STR	#1 3STR - 2/0	#6-#1 19STR	#1 3STR - 2/0	3/0 - 4/0
C	SOL. CU. OR AL.	#6-#4-#3-#1	#6 - 1/0	#6 - 1/0	2/0 - 3/0	#6 - 1/0	2/0 - 3/0	250 - 300
	COMPACT ACSR	#6-#4-#1	#6 - #1	#6 - #1	1/0 - 2/0	#6 - #1	1/0 - 2/0	3/0-266 18/1
	COMPACT STR CU OR AL	#6-#4-#3-#1	#6 - #1	#6 - #1	1/0 - 3/0	#6 - #1	1/0 - 3/0	4/0 - 266
	METRIC CABLE RANGE CU. OR AL.	16mm ² -35mm ²	16mm ² -35mm ²	16mm ² -35mm ²	50mm ² -80mm ²	16mm ² -35mm ²	50mm ² -80mm ²	85mm ² -120mm ²
	WIRE DIA. RANGE (in)	.328 - .162	.332 - .162	.332 - .162	.447 - .336	.332 - .162	.447 - .336	.563 - .461
	WIRE DIA. RANGE (mm)	8.3 - 4.1	8.4 - 4.1	8.4 - 4.1	11.4 - 8.5	8.4 - 4.1	11.4 - 8.5	14.3 - 11.7
	H	1.11	1.12	1.47	1.42	1.47	1.42	1.40
	L	1.25	1.50	1.88	1.88	1.88	2.25	2.52
	W	.67	.64	.76	.83	.87	.83	.84
	B	DIE INDEX	0	0	D3	D3	D3	D3
DIE SET		PERMANENT DIES IN MD6-8 TOOL INSTALL ALL SIZES						
NO. OF CRIMPS		4	5	5	5	5	6	7
DIE INDEX		0	0	D3	D3	D3	D3	D3
DIE SET		U-0	U-0	U-D3	U-D3	U-D3	U-D3	U-D3
NO. OF CRIMPS		2	2	2	2	2	3	3
DIE INDEX		0	0	D3	D3	D3	D3	D3
DIE SET		U-0	U-0	U-D3	U-D3	U-D3	U-D3	U-D3
NO. OF CRIMPS		2	2	2	2	2	3	3
DIE INDEX		0	0	D3	D3	D3	D3	D3
A	DIE SET	U-0	U-0	U-D3	U-D3	U-D3	U-D3	U-D3
	NO. OF CRIMPS	2	2	2	2	2	3	3

REV	DATE	DESCRIPTION	ECO	BY	C'H'K.
B	8/28/2009 12:00:00 AM	REDRAW IN PROE	17570	AD	BSK

- NOTES:
- MATERIAL: ALUMINIUM
 - FOR CONDUCTOR COMBINATIONS OF AL TO AL OR AL TO CU.
 - U-DIES MAY BE USED WITH ADAPTER CAT. #'PT6515' FOR Y45 & 'PUADP-1' FOR Y46.
 - FOR MD6 TOOL USE W-O DIE INSERT, D3 DIE GROOVE IS PERMANENT.
 - "C" GROOVES ACCOMMODATE #10 SOL. -#14 SOL. (6mm²- 4mm²). DIA. RANGE: .116in - .064in (2.9mm - 1.6mm). NO "C" GROOVES ON CAT. NO. YHO-125 (SEE SHEET 2). WHEN UTILIZING "C" GROOVE(S) APPLY PENETROX™ 'A13' PRIOR TO WIRE INSTALLATION. WHEN UTILIZING TWO (2) "C" GROOVE TAPS, INSTALLATION TO BE MADE WITH HYDRAULIC TOOL ONLY. ALL FOUR (4) GROOVES CAN NOT BE UTILIZED IF USING A HAND TOOL. WHEN HAND TOOL IS USED, ONLY ONE (1) "C" GROOVE CAN BE UTILIZED AND CONNECTOR MUST BE POSITIONED AS SHOWN IN FIG. 3.
 - CONNECTORS ARE AND LISTED EXCEPT FOR YHO-125 & YHO-10 (SHT. 2 OF 2).



TO ORDER BURNDY® PRODUCTS CALL		LOKTAP™, TAP CONNECTOR	
UNITED STATES: 1-800-346-4175 (LONDONDERRY, NH)		ITEM NO: N/A	
CANADA: 1-800-361-6975 (QUEBEC) 1-800-387-6487 (ALL OTHER PROVINCES)		CAT. NO: YHD--, YHO-- (TABLE)	
FOR PRODUCT INFO: http://www.burndy.com		DRAWN BY: M.LAROCHELLE 7/14/90	
		CHECKER: MAL 8/18/90	
		DSN APPVL: S.T. 1/04/91	
		MFG APPVL: J.RUDD 1/24/91	
		QA APPVL: PRR 1/24/91	
		MKT APPVL: --	
		SCALE: 1:1	
		PROD FAM: OVERHEAD BARE CONNECTOR	
		DRAWING NO	
		PROJECT #: --	
		SIZE	
		SD206084	
		SHEET 1 OF 2	
		REV	
		B	