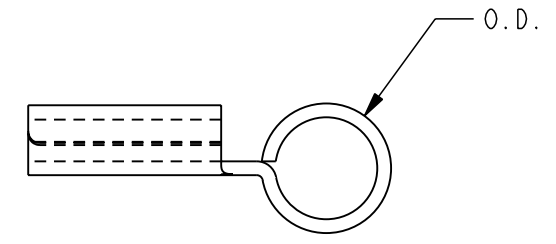
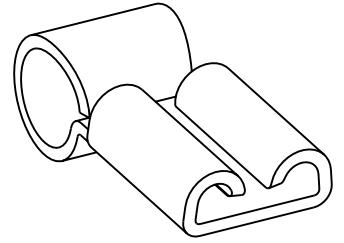
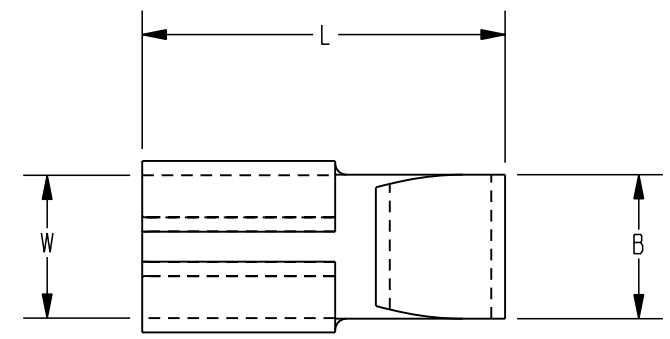


REV.	DATE	DESCRIPTION	ECO	BY	C'H'K.
D	8/3/2009 1:48:00 PM	ADD COLUMNS TO TABLE PER M/U.	18728	RLB	PW

FCI BURNDY CAT. NO.	PACKAGING QTY.	ITEM NUMBERS	TAB SIZE	STRIP LENGTH	WIRE RANGE	B	L	O.D.	W	MATERIAL	MAX OPERATING TEMPERATURE	APPLICABLE TOOLS
FL1825X03	D	10001529	.250 X .032	3/8" [9]	22-18	.25 [6]	.50 [13]	.125 [3]	.25 [6]	TIN-PLATED BRASS	175° C	MANUAL: BTH-450 RATCHET: BTR-482
	B	10005154										
FL1425X03	D	10001530	.250 X .032	3/8" [9]	16-14	.25 [6]	.51 [13]	.145 [4]	.25 [6]	TIN-PLATED BRASS	175° C	
	B	10005155										
FL1025X03	D	10001531	.250 X .032	3/8" [9]	12-10	.25 [6]	.63 [16]	.225 [6]	.25 [6]	NICKEL-PLATED STEEL	250° C	
	B	10005156										



NOTES:

- DIMENSIONS IN BRACKETS [] ARE IN MILLIMETERS, ROUNDED OFF TO THE NEAREST MILLIMETER UNLESS OTHERWISE NOTES. METRIC DIMENSIONS ARE FOR REFERENCE ONLY.
- PACKAGING QUANTITIES CAN BE PROVIDED IN THE FOLLOWING WAYS:
ADD SUFFIX B (BULK) OR D (DISTRIBUTOR) TO THE CATALOG NUMBERS. EXAMPLE: FL1825X03B
- CONNECTORS ARE UL LISTED AND CSA CERTIFIED
- CONFORMS TO INTERNAL SPEC. PS603 ENGAGEMENT AND DISENGAGEMENT.
- ACCOMMODATES STRANDED COPPER AWG WIRE ONLY.
- FOR TOOLING REFERENCE: 10029095
- NOT UL LISTED OR CSA CERTIFIED.

TO ORDER BURNDY® PRODUCTS CALL
 UNITED STATES:
 1-800-346-4175 (LONDONDERRY, NH)
 CANADA:
 1-800-361-6975 (QUEBEC)
 1-800-387-6487 (ALL OTHER PROVINCES)
 FOR PRODUCT INFO: <http://www.burndy.com>

FLAG DISCONNECT TERMINAL, FEMALE	
ITEM NO: (SEE TABLE)	
CAT. NO: FL- (SEE TABLE)	
DRAWN BY: P. WASON	06/29/09
CHECKER: P. WASON	07/14/09
DSN APPVL: P. WASON	06/29/09
MFG APPVL: --	--
QA APPVL: J. BRODEUR	07/07/09
MKT APPVL: J. SYLVIA	06/29/09
PROD FAM: --	SCALE: 3:1
PROJECT #: --	DRAWING NO
DOCUMENT TYPE: --	REV
REL LEVEL: Released	SHEET 1 OF 1



REV: PE0200